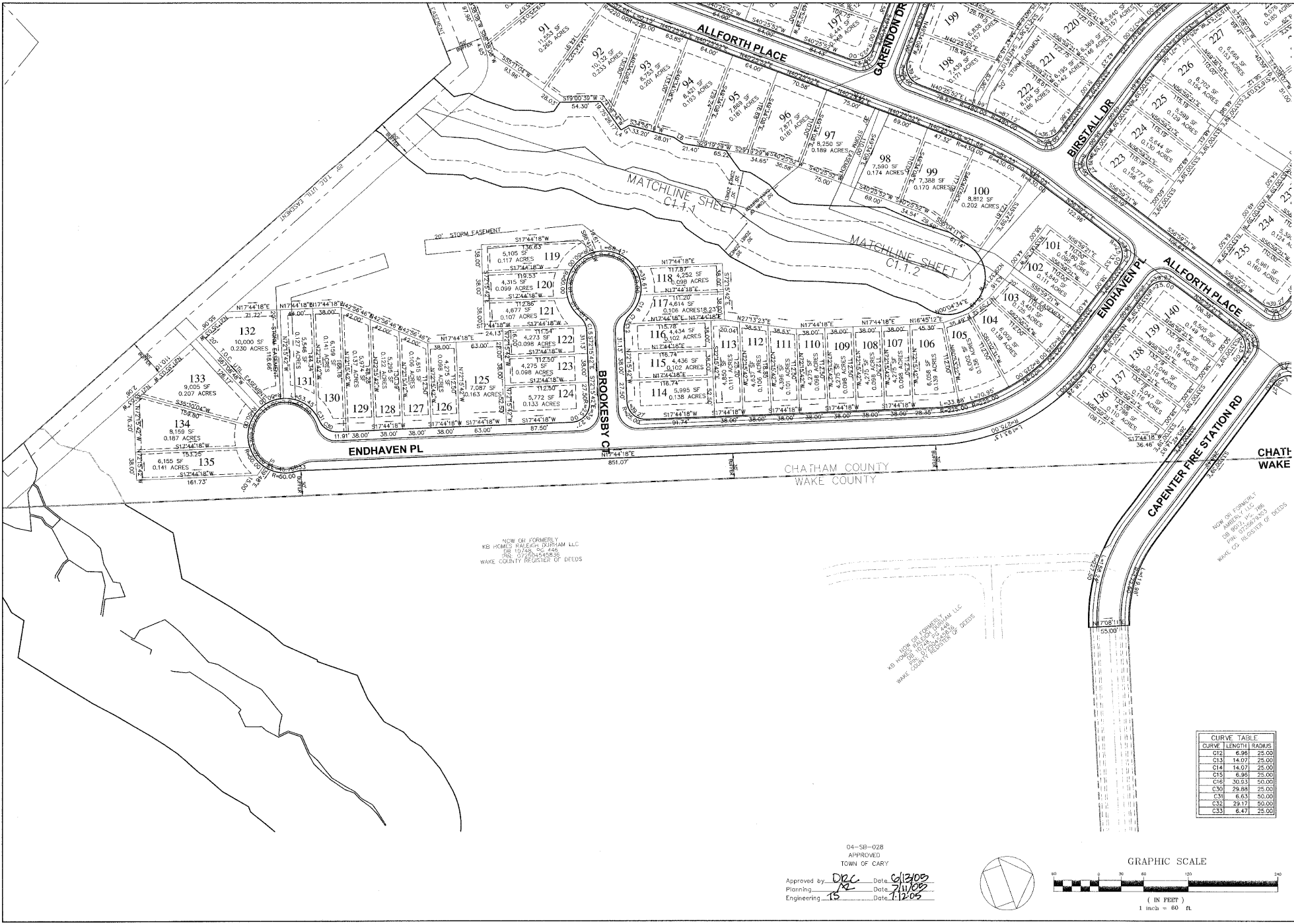


C:\Projects\1588 - Project\04-4200 - Amberly AP.Dwg (plotted) 6/28/2005 8:38:52 AM



NOW ON FORMERLY
KB HOMES SALE OF DURHAM LLC
SR 10158, RC 446
SR 077828455820
WAKE COUNTY REGISTER OF DEEDS

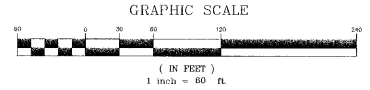
NOW ON FORMERLY
KB HOMES SALE OF DURHAM LLC
SR 10158, RC 446
SR 077828455820
WAKE COUNTY REGISTER OF DEEDS

CURVE TABLE

CURVE	LENGTH	RADIUS
C12	6.98	25.00
C13	14.07	25.00
C14	14.07	25.00
C15	6.98	25.00
C16	30.93	50.00
C30	29.88	25.00
C31	8.63	50.00
C32	29.17	50.00
C33	6.47	25.00

04-SB-028
APPROVED
TOWN OF CARY

Approved by: *DRC* Date: *6/30/05*
Planning: *RS* Date: *7/1/05*
Engineering: *RS* Date: *7/20/05*



CHAS. H. SELLS, INC.
Consulting Engineers, Surveyors & Photogrammetrists
15401 Westover Lane, Cary, NC 27513
Tel: 919-678-0035
Fax: 919-678-0206
www.chasells.com

RELEASED FOR CONSTRUCTION

**Carolina Preserve by
Del Webb at Amberly
Phase 1**
Cary, NC
GS Carolina
3412 1/2 Hillsborough St.
Raleigh, NC 27607

REVISIONS

NO.	DESCRIPTION	DATE

PROJECT #: 04-4056 DATE: 6/25/05
DRAWN BY: WF CHECKED BY: DS
TITLE:
**LOT
LAYOUT
3 OF 5**
SHEET
C1.1.3

© CHAS SELLS, INC. ALL RIGHTS ARE RESERVED. ANY REPRODUCTION OR OTHER USE OF THIS DOCUMENT WITHOUT PERMISSION FROM CHAS SELLS, INC. IS EXPRESSLY PROHIBITED.