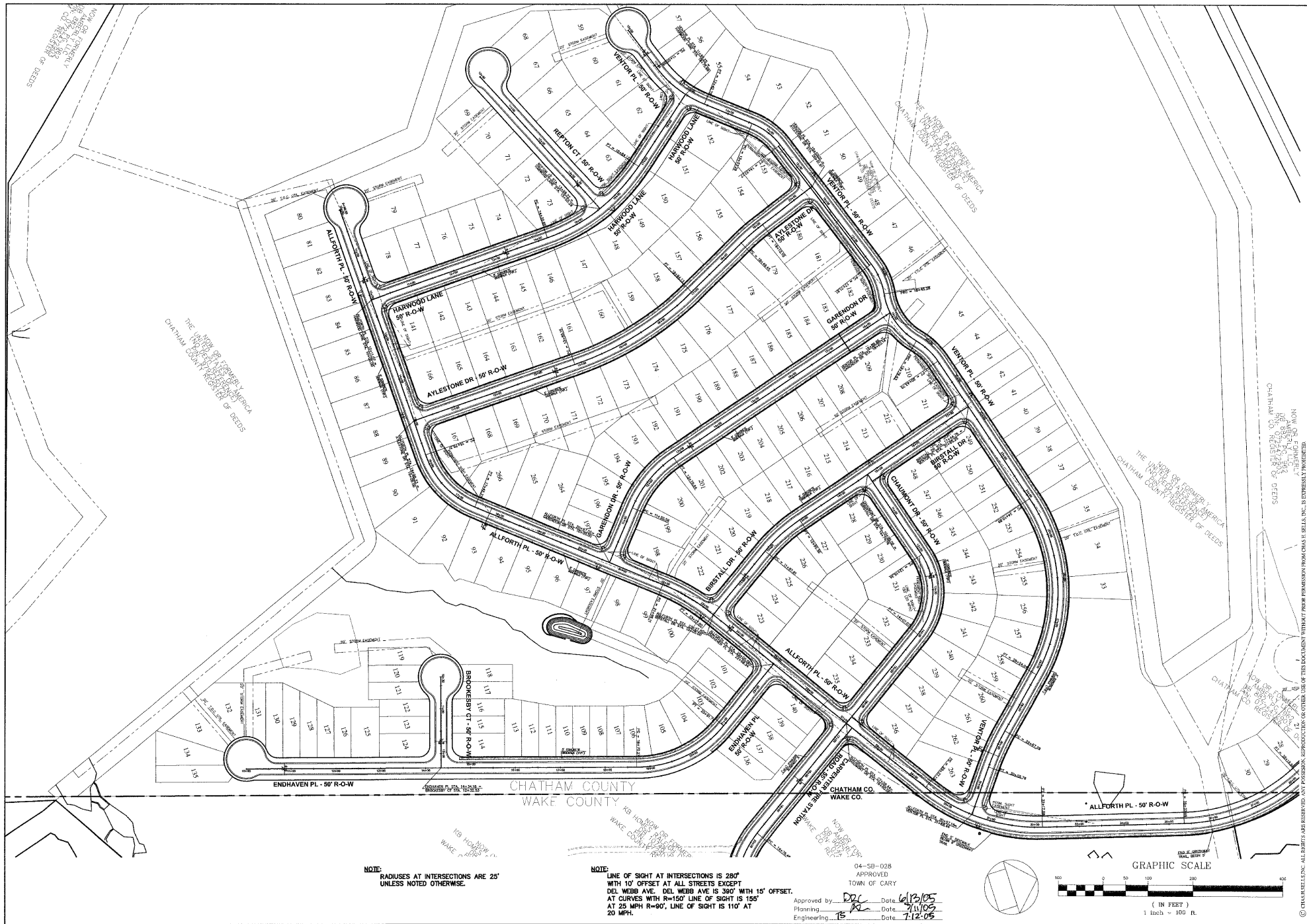


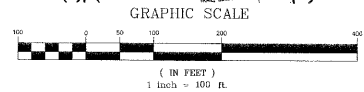
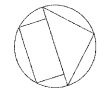
V:\Projects\Del Webb\Drawings\04-4036-01\04-4036-01.dwg, 21 JUN 2006 11:49:11, 6/22/2006 8:02:04 PM



NOTE:
RADIUSES AT INTERSECTIONS ARE 25'
UNLESS NOTED OTHERWISE.

NOTE:
LINE OF SIGHT AT INTERSECTIONS IS 280'
WITH 10' OFFSET AT ALL STREETS EXCEPT
DEL WEBB AVE. DEL WEBB AVE IS 390' WITH 15' OFFSET.
AT CURVES WITH R=150' LINE OF SIGHT IS 155'
AT 25 MPH R=90', LINE OF SIGHT IS 110' AT
20 MPH.

04-58-028
APPROVED
TOWN OF CARY
Approved by: DJC Date: 6/13/05
Planning: RZ Date: 7/11/05
Engineering: ES Date: 7-12-05



REVISIONS

PROJECT #: 04-4036 DATE: 6/25/05

DRAWN BY: WF CHECKED BY: DS

TITLE
ROADWAY
LAYOUT
1 OF 2

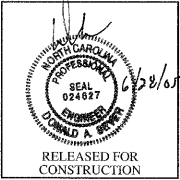
SHEET

C3.0.1

Carolina Preserve by
Del Webb at Amberly

Phase 1

Cary, NC
GS Carolina
3412 1/2 Hillsborough St.
Raleigh, NC 27607



CHAS. H. SELLS, INC.
Consulting Engineers, Surveyors & Photogrammetrists

15401 Western Fairview Dr.
Cary, NC 27513
Tel: 919-678-0035
Fax: 919-678-0206
www.chasells.com

CHAS. H. SELLS, INC. ALL RIGHTS ARE RESERVED. ANY REPRODUCTION OR OTHER USE OF THIS DOCUMENT WITHOUT THE PERMISSION FROM CHAS. H. SELLS, INC. IS EXPRESSLY PROHIBITED.