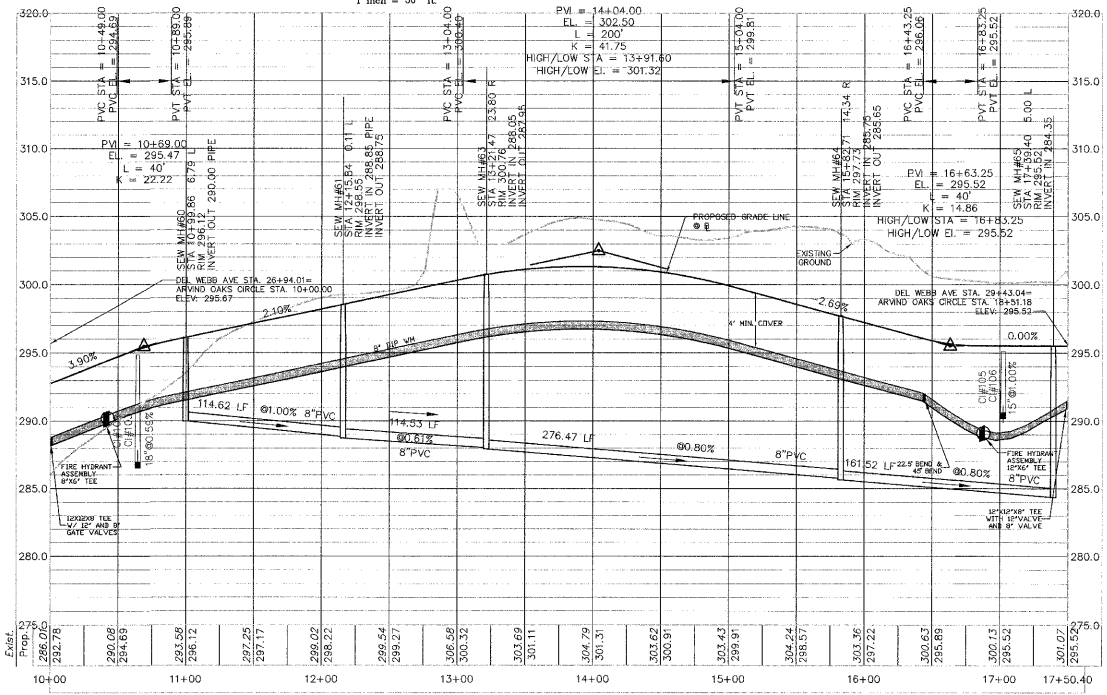
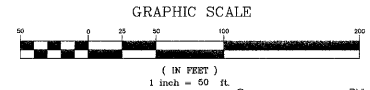


- IRRIGATION METER
- WATER METER
- SANITARY SEWER LATERAL



ARVIND OAKS CIRCLE

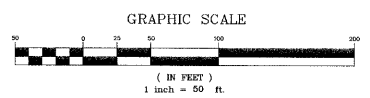
Tangent 1
Length: 175.59
Course: N 85-56-35 E

Curve 1
PI = 13+74.44
Delta: 131-17-51 LEFT
DOC: 63-39-43
Tangent: 198.85
Length: 206.24
Radius: 30.00
Design Speed: 25 MPH

Tangent 2
Length: 145.21
Course: N 45-21-15 W

Curve 2
PI = 15+91.10
Delta: 70-53-30 LEFT
DOC: 63-39-43
Tangent: 64.07
Length: 111.36
Radius: 60.00
Design Speed: 25 MPH

Tangent 3
Length: 112.01
Course: S 63-45-16 W



04-58-028
APPROVED
TOWN OF CARY

Approved by: *[Signature]* Date: 6/13/05
 Planning: *[Signature]* Date: 7/1/05
 Engineering: *[Signature]* Date: _____

CHAS. H. SELLS, INC.
 Consulting Engineers, Surveyors & Photogrammetrists
 15300 Weston Parkway
 Cary, NC 27513
 Tel: 919-678-1035
 Fax: 919-678-1026
 www.chasells.com

RELEASED FOR CONSTRUCTION
 DONALD A. WEBB
 ENGINEER
 SEAL 024627
 6/20/05

Carolina Preserve by
 Del Webb at Amberly
 Phase 1
 Cary, NC
 GS Carolina
 3412 1/2 Hillsborough St.
 Raleigh, NC 27607

REVISIONS

PROJECT #: 04-4300 DATE: 11/15/04
 DRAWN BY: JE CHECKED BY: DS
 TITLE: ARVIND OAKS CIRCLE PLAN AND PROFILE

SHEET
C3.17

HORZ. SCALE: 1" = 50'
 VERT. SCALE: 1" = 5'