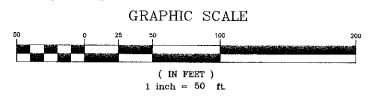
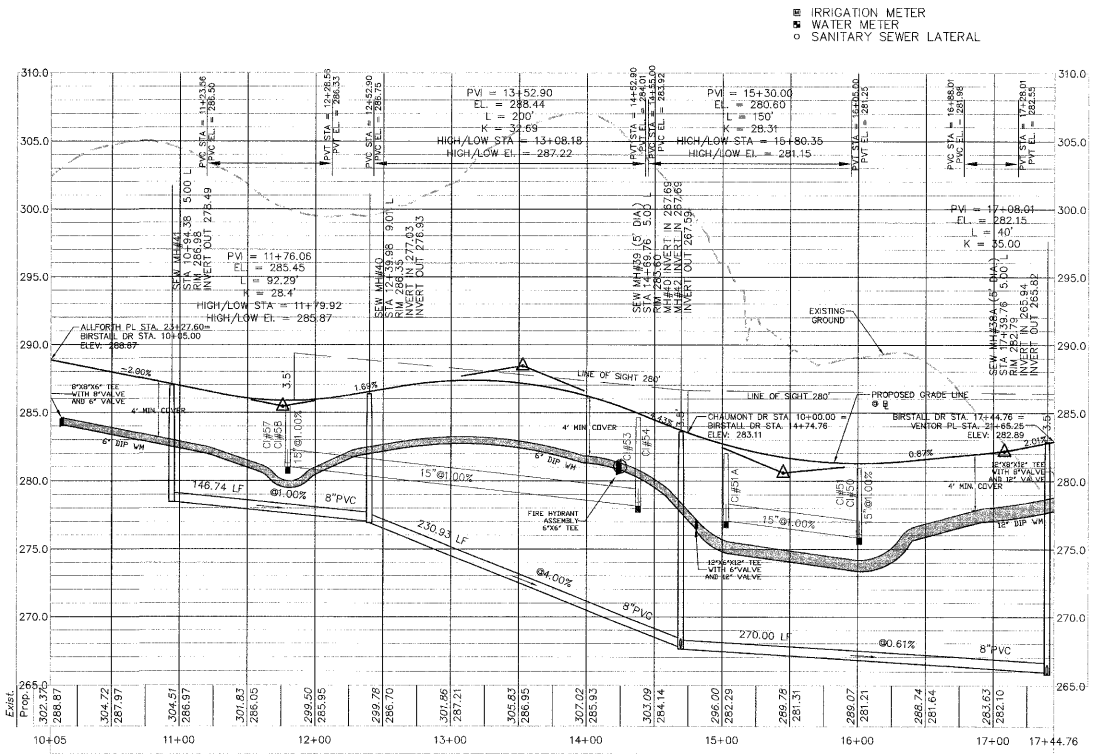


BIRSTALL DR	
Tangent 1 Length:	182.61
Course:	N 33-00-39 W
CURVE 1	
R:	124+40.37
Delta:	17-08-46 RIGHT
DOC:	16-22-13
Tangent:	52.76
Length:	104.74
Radius:	350.07
Design Speed:	25 MPH
Tangent 2 Length:	452.42
Course:	N 15-51-53 W



CHAS. H. SELLS, INC.
 Consulting Engineers, Surveyors & Photogrammetrists
 15401 Western Parkway
 Cary, NC 27513
 Tel: 919-675-0035
 Fax: 919-675-0236
 www.chasells.com

RELEASED FOR CONSTRUCTION



04-59-028
 APPROVED
 TOWN OF CARY

Approved by: *DRC* Date: *6/13/05*
 Planning: *RZ* Date: *7/10/05*
 Engineering: *TS* Date: *7-12-05*

HORIZ. SCALE: 1" = 50'
 VERT. SCALE: 1" = 5'

REVISIONS

PROJECT #: 04-4300 DATE: 6/25/05
 DRAWN BY: JE CHECKED BY: DS
 TITLE
BIRSTALL DR
PLAN AND PROFILE
 SHEET
C3.8

Carolina Preserve by
 Del Webb at Amberly
 Phase 1
 Cary, NC
 GS Carolina
 3412 1/2 Hillsborough St.
 Raleigh, NC 27607

© CHAS SELLS, INC. ALL RIGHTS ARE RESERVED. ANY REPRODUCTION OR OTHER USE OF THIS DOCUMENT WITHOUT PRIOR PERMISSION FROM CHAS SELLS, INC. IS EXPRESSLY PROHIBITED.