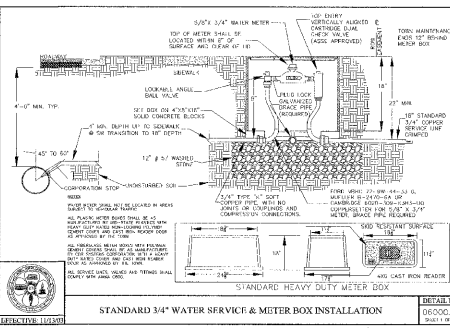
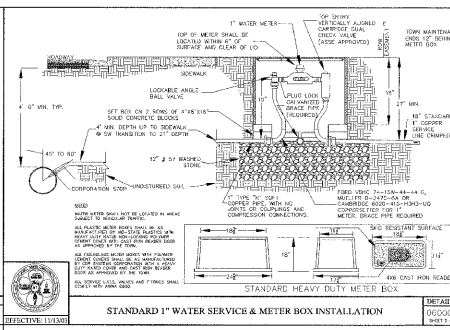


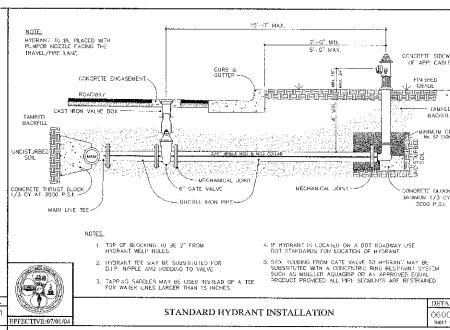
STANDARD TRENCH AND PAVEMENT REPAIR SECTIONS



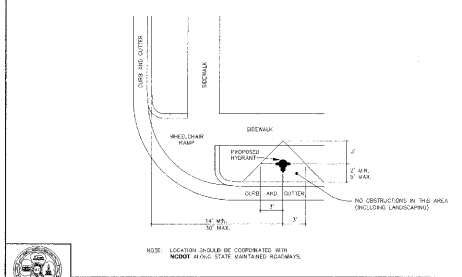
STANDARD 3/4" WATER SERVICE & METER BOX INSTALLATION



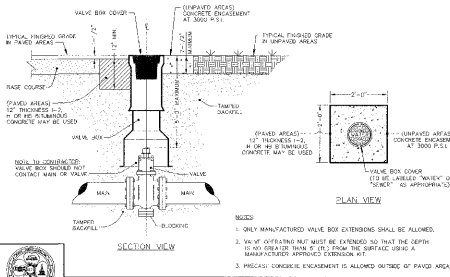
STANDARD 1" WATER SERVICE & METER BOX INSTALLATION



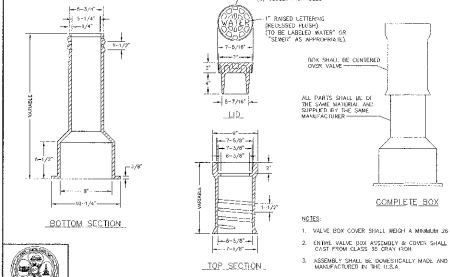
STANDARD HYDRANT INSTALLATION



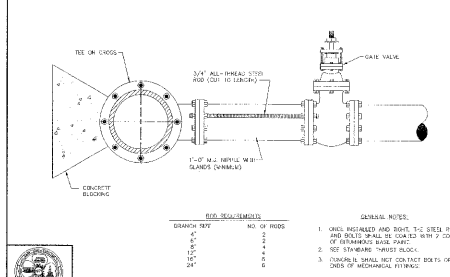
STANDARD HYDRANT LOCATION



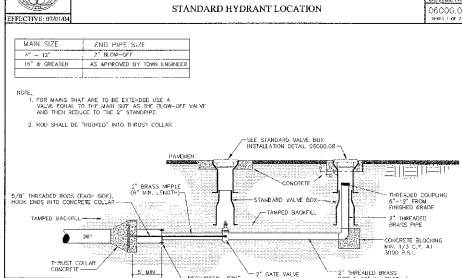
STANDARD VALVE BOX INSTALLATION



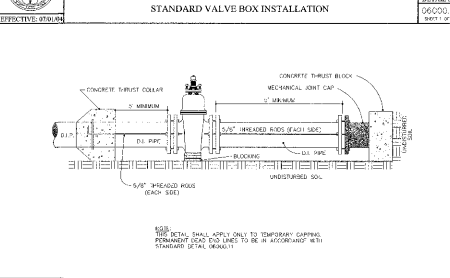
STANDARD VALVE BOX INSTALLATION



STANDARD VALVE RODDING



STANDARD 2" BLOW-OFF ASSEMBLY



STANDARD CAPPING DETAIL

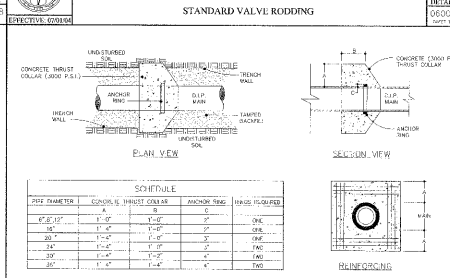
**STANDARD THURST COLLAR BLOCKING**

NON-PPE DIA. (IN)	MIN. PPE DIA. (IN)	MIN. PPE DIA. (IN)	MIN. PPE DIA. (IN)	MIN. PPE DIA. (IN)	MIN. PPE DIA. (IN)
4	1 1/2	1 1/2	1 1/2	1 1/2	1 1/2
6	1 1/2	1 1/2	1 1/2	1 1/2	1 1/2
8	1 1/2	1 1/2	1 1/2	1 1/2	1 1/2
10	2 1/2	2 1/2	2 1/2	2 1/2	2 1/2
12	3 1/4	1 1/2	1 1/2	1 1/2	1 1/2
14	1 1/2	1 1/2	3/4	1 1/2	1 1/2
16	1 1/2	2 0	1 1/2	1 1/2	1 1/2
18	1 1/2	2 1/2	1 1/2	2 1/2	1 1/2
20	3 0	3 0	1 1/2	3 0	1 1/2
24	3 3	1 1/2	2 1/2	1 1/2	2 1/2

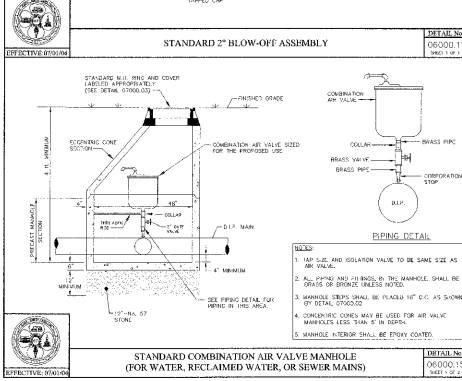
**NOTES:**

1. FITTINGS SHALL BE INSTALLED WITH A MINIMUM OF 18" OF CONCRETE.
2. FITTINGS SHALL BE SUBMITTED FOR APPROVAL BY THE TOWN ENGINEER PRIOR TO INSTALLATION.
3. FITTINGS SHALL BE SUBMITTED WITH A TEST REPORT FROM THE TOWN ENGINEER.

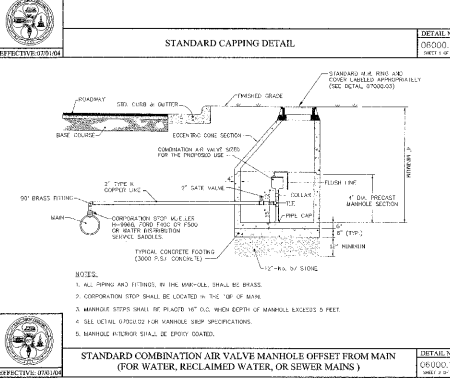
STANDARD THURST COLLAR BLOCKING



STANDARD THURST COLLAR INSTALLATION

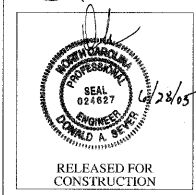


STANDARD COMBINATION AIR VALVE MANHOLE (FOR WATER, RECLAIMED WATER, OR SEWER MAINS)



STANDARD COMBINATION AIR VALVE MANHOLE OFFSET FROM MAIN (FOR WATER, RECLAIMED WATER, OR SEWER MAINS)

**CHAS. H. SELLS, INC.**  
 Consulting Engineers, Surveyors & Photogrammetrists  
 15401 Westport Parkway  
 Cary, NC 27513  
 Tel: 919-678-0035  
 Fax: 919-678-0206  
 www.chasells.com



Carolina Preserve by  
 Del Webb at Amberly  
 Phase 1  
 Cary, NC  
 GS Carolina  
 3412 1/2 Hillsborough St.  
 Raleigh, NC 27607

REVISIONS

NO.	DATE	DESCRIPTION

PROJECT # 04-806 DATE: 4/18/05  
 DRAWN BY: JB CHECKED BY: DS  
 TITLE:  
 WATERLINE DETAILS  
 SHEET  
**C9.4.0**

04-58-028  
 APPROVED  
 TOWN OF CARY  
 Approved by: DRC Date: 6/13/05  
 ASL Date: 5/11/05  
 Planning: Date:  
 Engineering: Date: