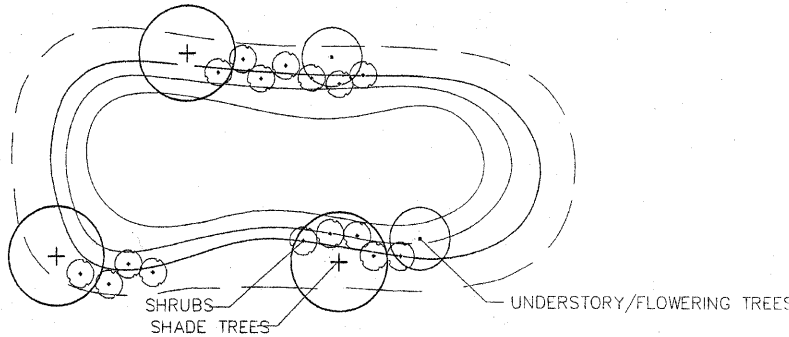


## STORMWATER MANAGEMENT DEVICES – LANDSCAPE STANDARDS



A MINIMUM OF 10% OF THE SURFACE AREA SHALL BE INCORPORATED INTO LANDSCAPED AREAS FOR SCREENING OR ENHANCEMENT AND SHALL CONSIST OF AT LEAST THREE (3) AREAS. SEE PLANT LIST FOR SPECIES. (NOTE: 100% OF THE AREA SHALL BE ESTABLISHED IN GROUND COVER, TURF, OR OTHER APPROPRIATE PERENNIAL COVER OR MULCHED AREAS).

### PLANTS FOR ENHANCING OR SCREENING STORMWATER MANAGEMENT DEVICES

PLANT TYPE	BOTANICAL NAME	COMMON NAME	MAT. SIZE	MIN. CAL.	COMMENTS
A.L.G. MAT. TREE	<i>Acer rubrum</i>	Maple, Red Blaze, Flame	40'-60'	1. sun	red maple is native, cultivars give improved fall color
A.L.G. MAT. TREE	<i>Acer rubrum</i> 'Bowhai'	Maple, Bowhai	25'	1. sun	fastigate
A.L.G. MAT. TREE	<i>Liquidambar styraciflua</i>	Sweet Gum, American	60'-75'	1. sun	beautiful fall color; no pests, plant away from lawn
A.L.G. MAT. TREE	<i>Liquidambar styraciflua</i>	Sweetgum, Fruitless	50'+/-	1. sun	gorgeous fall color; more columnar than original, leaf rounded, fruitless
A.L.G. MAT. TREE	<i>Quercus bicolor</i>	Oak, Swamp White	50'-60'	1. sun	good naturalizer in bottom lands, acid soil
A.L.G. MAT. TREE	<i>Salix babylonica</i>	Willow, Weeping	30'-40'	1. sun	wispy, wetland
A.L.G. MAT. TREE	<i>Taxodium distichum</i>	Cypress, Bald	50'-60'	1. sun	deciduous center; feathery foliage, red in fall
C.SHURUB	<i>Spiraea x bumalda</i> 'Anthony Waterer'	Spiraea, Anthony Waterer	2'-4'	1. sun	soil tolerant, deep carmine-pink flowers in late spring
E.GRASS	<i>Miscanthus sinensis</i> 'Purpureus'	Red Silver Grass	3'-4'	1. sun	probably an annual here, red leaves, plant in spring
E.GRASS	<i>Miscanthus sinensis</i> 'Gracillima'	Maiden Grass	5-8'	1. sun	Ox. bronze red inflorescence good in winter, plant in spring
C.SHURUB	<i>Myrica cerifera</i>	Wax Myrtle	10'-12'	2. sun, semi-sun	basic screen, yellow green leaves, soil tolerant
C.SHURUB	<i>Viburnum opulus</i> 'Roseum'	Viburnum, European Snowball	8-12'	2. sun, semi-sun	white flower balls in May, deciduous, maple like leaf
C.SHURUB	<i>Itea virginica</i>	Sweetspire	8'	2. sun, semi-sun	dk. red leaves, fragrance flowers, May-June, non-descript, native, may sucker
B.S.M. MAT. TREE	<i>Halesia carolina</i>	Silverbell, Carolina	10'-40'	3. sun-shade	Understory tree, wk. ball shaped flowers, pH 5.0-6.0
A.L.G. MAT. TREE	<i>Magnolia virginiana</i>	Magnolia, Sweet Bay	25'-60'	4. Shade tolerant	well-drained soil, spr. transparent, white flowers, evergreen
B.S.M. MAT. TREE	<i>Carpinus caroliniana</i> 'fastigiata'	Hornbeam 'fastigiata'	35'-40'	4. Shade tolerant	formal, vertical look, native, natural, transplant young plants
B.S.M. MAT. TREE	<i>Amenanchier canadensis</i>	Servicberry	6'-20'	4. Shade tolerant	delicate, oily, natural native
B.S.M. MAT. TREE	<i>Chionanthus virginicus</i>	Fringe Tree	12'-20'	4. Shade tolerant	well drained acid soil, yellow fall color

### PLANTS FOR BIORETENTION AREAS (PARTIAL LIST)

BOTANICAL NAME	COMMON NAME	SPACING
<i>Cephalanthus occidentalis</i>	Buttonbush	6'
<i>Viburnum dentatum</i>	Arrowwood	4'
<i>Cornus florida</i>	Flowering Dogwood	6'
<i>Quercus michauxii</i>	Swamp Chestnut Oak	6'
<i>Iris Shrevei</i>	Blue Flag Iris	2'
<i>Pontederia cordata</i>	Pickertail Weed	2'
<i>Juncus effusus</i>	Soft Rush	2'
<i>Sagittaria latifolia</i>	Broad-leaved Arrowhead	2'
<i>Scripus validus</i>	Softstem Bulrush	2'
<i>Andropogon gerardii</i>	Big Bluestem	36.00 oz/ac
<i>Panicum vergatum</i>	Switchgrass	6.00 oz/ac

## NEIGHBORHOOD STREETS – LANDSCAPE STANDARDS

BOTANICAL NAME	COMMON NAME	MAT. SIZE	MIN. CAL.	COMMENTS
<i>Acer rubrum</i> 'October Glory'	Maple, October Glory	35'x40'	4"	exc oval round head, brilliant orange to red fall color
<i>Acer rubrum</i> 'Red Sunset'	Maple, Red Sunset	to 40'	4"	oval, round with var fall color from yellow to red
<i>Acer buergerianum</i>	Maple, Trident	25'	4"	very tolerant of urban conditions
<i>Acer saccharum</i>	Maple, Sugar - Legacy, Green Mountain	45'-50'	4" oval to upright	
<i>Carpinus betulus</i> 'fastigiata'	European Hornbeam	30'-40'	4"	
<i>Liquidambar styraciflua</i>	Sweetgum, Fruitless	50'+/-	4"	gorgeous fall color, more columnar than original, leaf rounded, fruitless
<i>Magnolia grandiflora</i> 'Ala'	Magnolia, Ala Southern	20'x50'	11-12' ht	large w/ flowers thru early summer, evergreen
<i>Magnolia grandiflora</i> 'Claudia Wannamaker'	Magnolia, Claudia Wannamaker	30'x60'	11-12' ht	well-drained soil, spr. transparent, white flowers, evergreen
<i>Magnolia grandiflora</i> 'D.D. Blanchard'	Magnolia, D.D. Blanchard	30'x60'	11-12' ht	prefers deep rich moist soil
<i>Quercus lyrata</i>	Oak, Overcup	40'x40'	4"	adapts well to poor sites
<i>Quercus laurifolia</i>	Oak, Laurel	40-60'	4"	more tolerant of heavy soils and slow drainage than many other oaks
<i>Quercus lyrata</i> 'Highbeam'	Oak, Highbeam Overcup	50-80'	3.5"	uniform, dense dominant leader
<i>Quercus muhlenbergii</i>	Oak, Nuttall	40'x70'	4"	exc scarlet red color in fall, similar but better than Q. shumardii
<i>Quercus phellos</i>	Oak, Willow	30'x50'	4"	fast-growing, easy to transplant, prefers acid soil
<i>Quercus phellos</i> 'Hightower'	Oak, Hightower Willow	30'x55'	3.5"	
<i>Quercus shumardii</i>	Oak, Shumard	60'	4"	exc scarlet red color in fall
<i>Ulmus parvifolia</i> 'Allee'	Elm, Allee Lacebark	50'x70'	4"	slightly specimen tree
<i>Ulmus parvifolia</i> 'Boque'	Elm, Boque Lacebark	40'x60'	4"	easy to maintain central leader

EACH NEIGHBORHOOD STREET SHALL HAVE A MINIMUM OF ONE NEWLY PLANTED SHADE TREE FOR EACH 40' LINEAR FEET (CURBSIDE); THIS REQUIREMENT MAY BE WAIVED IF SIGNIFICANT VEGETATION IS RETAINED BETWEEN THE STREET AND PROPOSED HOUSE.

\*CALIPER SIZES MAY BE REDUCED DUE TO AVAILABILITY; HOWEVER SIZES MUST BE UNIFORM FOR EACH STREET OR SECTION OF STREET AND IN NO CASE SHALL TREES BE LESS THAN 2" CALIPER BY 8' TALL.

**CHAS. H. SELLS, INC.**  
 Consulting Engineers, Surveyors & Photogrammetrists  
 15401 Westway Parkway  
 Cary, NC 27513  
 Tel: 919-678-0035  
 Fax: 919-678-0206  
 www.chasells.com

RELEASED FOR CONSTRUCTION

© CHAS. H. SELLS, INC. ALL RIGHTS ARE RESERVED. ANY REPRODUCTION OR OTHER USE OF THIS DOCUMENT WITHOUT PERMISSION FROM CHAS. H. SELLS, INC. IS EXPRESSLY PROHIBITED.

Carolina Preserve by  
 Del Webb at Amberly  
 Phase 1  
 Cary, NC  
 3412 1/2 Hillsborough St.  
 Raleigh, NC 27607

REVISIONS


PROJECT # 04-036 DATE: 6/25/05  
 DRAWN BY: JE CHECKED BY: DS  
 TITLE:  
 LANDSCAPE PLAN  
 DETAILS  
 SHEET:  
**L1.2.0**

Approved by: **DRC** Date: **6/13/05**  
 Planning: **AC** Date: **5/11/05**  
 Engineering: **TS** Date: **7/12/05**

04-SB-028  
 APPROVED  
 TOWN OF CARY