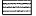


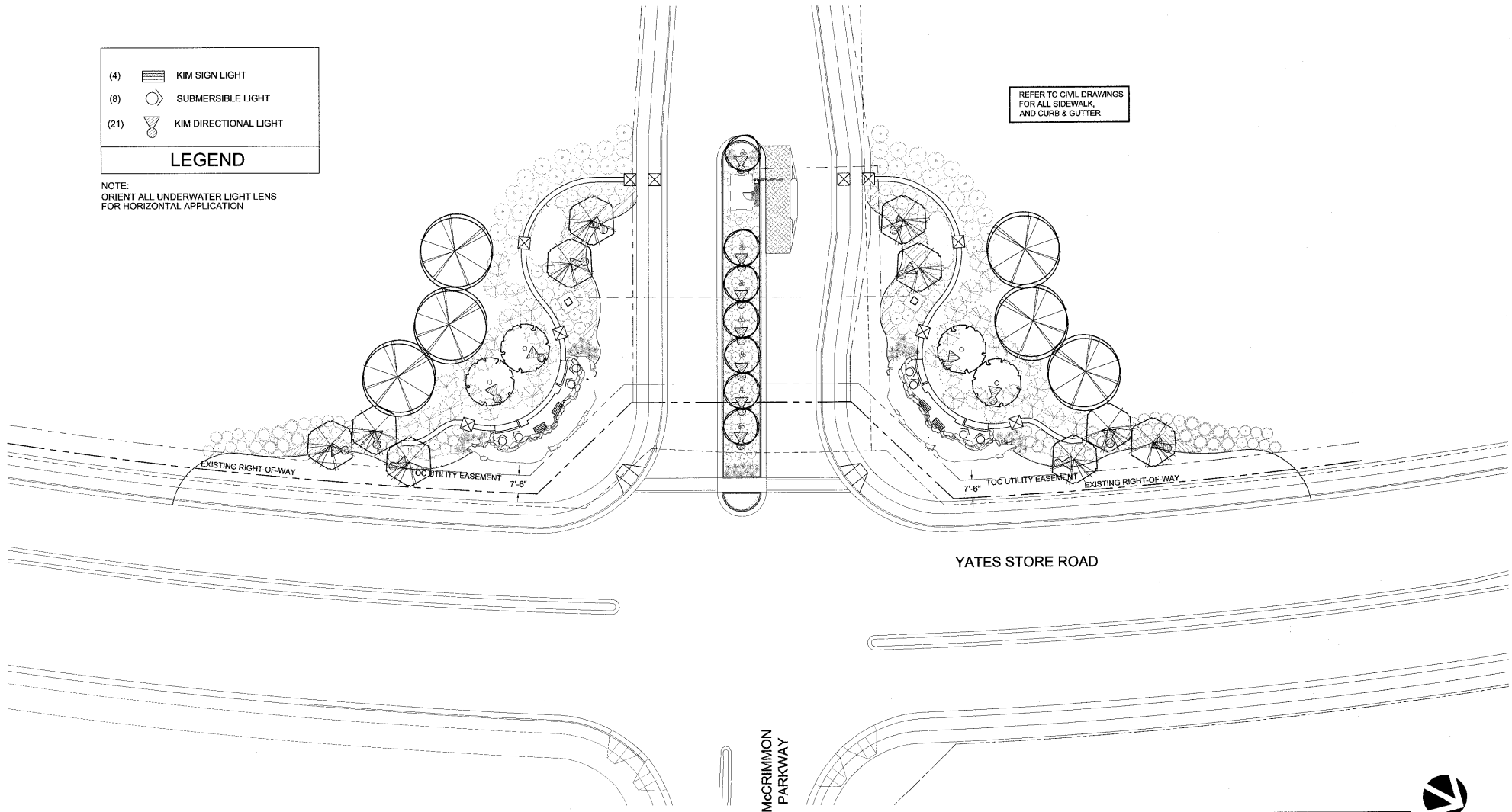


- (4)  KIM SIGN LIGHT
- (8)  SUBMERSIBLE LIGHT
- (21)  KIM DIRECTIONAL LIGHT

**LEGEND**

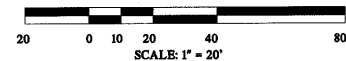
NOTE:  
ORIENT ALL UNDERWATER LIGHT LENS  
FOR HORIZONTAL APPLICATION

REFER TO CIVIL DRAWINGS  
FOR ALL SIDEWALK  
AND CURB & GUTTER



YATES STORE ROAD

McCRIMMON  
PARKWAY



1.

**Lighting Plan**

CARY PROJECT NUMBER 05-SP-118  
APPROVED  
TOWN OF CARY

APPROVED BY RC DATE 10-31-05  
PLANNING RC DATE 11-23-05  
ENGINEERING FE DATE 11-28-05



JOB NUMBER: 3040300  
DRAWN BY: FPL  
CHECKED BY: GH

Niles Bolton Associates, Inc.

One Buckhead Plaza  
3006 Peachtree Road, NW  
Suite 600  
Atlanta, Georgia  
404-363-7800  
Fax 404-363-7810  
nb@nilesbolton.com



REVISIONS  
DATE DESCRIPTION

This drawing, as an instrument of service, is and shall remain the property of the Landscaper Associates and shall not be reproduced, copied or used in any way without the permission of the Landscaper Associates.

**Carolina Preserve**  
by *Del Webb*  
A T A M B E R L Y  
Cary, North Carolina

LIGHTING PLAN

L-1.09

DATE: 11/28/05