

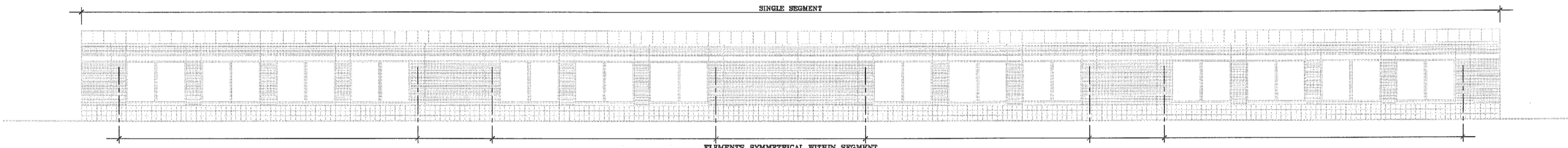
DATE
 10/30/2007
 12/10/2008
 4/15/2009
 7/1/2009

John C. Williams, AIA, PA
 Architect
 PO Box 1018
 Hillsborough, NC 27278
 919 732 6811

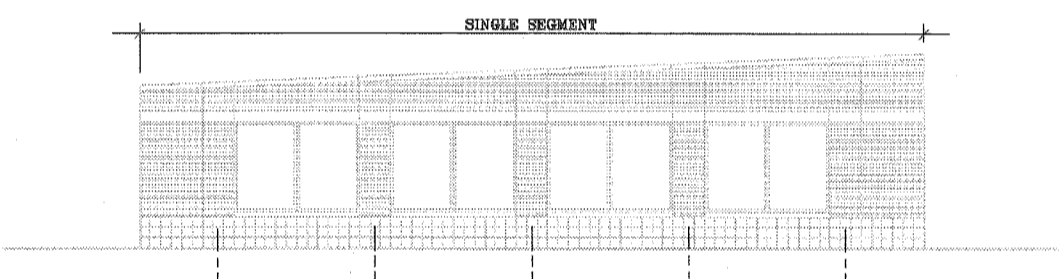
PROJECT
 STORAGE BUILDING FOR
 CARPENTER VILLAGE COMMERCE
 2060 SOWTER DRIVE
 CARY, NORTH CAROLINA

COMPOSITION
 OVERLAY

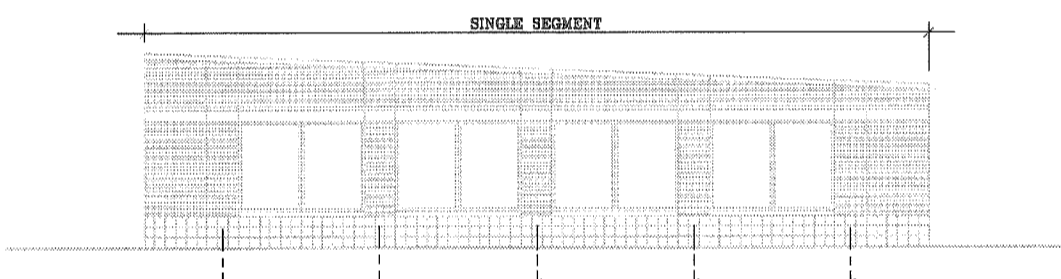
JOB NO.
 0731-C
 SHEET NO.



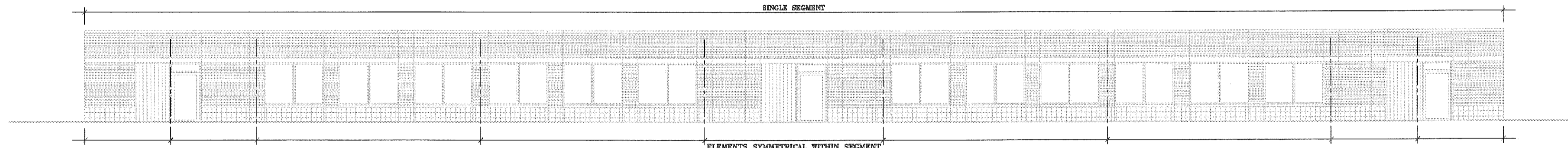
REAR ELEVATION SCALE: 1/8"=1'-0"



LEFT SIDE ELEVATION SCALE: 1/8"=1'-0"



RIGHT SIDE ELEVATION SCALE: 1/8"=1'-0"



FRONT ELEVATION SCALE: 1/8"=1'-0"

REFER TO SHEET A-2 FOR ELEVATION MATERIALS, NOTES AND COLOR SCHEDULE.

CARY PROJECT NUMBER: 08-SP-086
 APPROVED
 TOWN OF CARY

Approved by	<u>Dec</u>	Date	<u>8/15/2010</u>
Planning	<u>MH</u>	Date	<u>8/15/2010</u>
Engineering		Date	