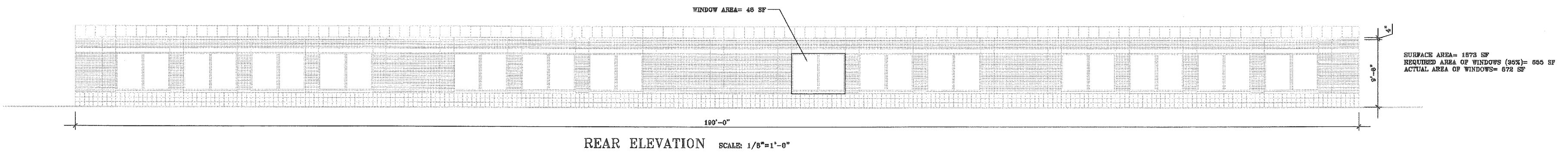
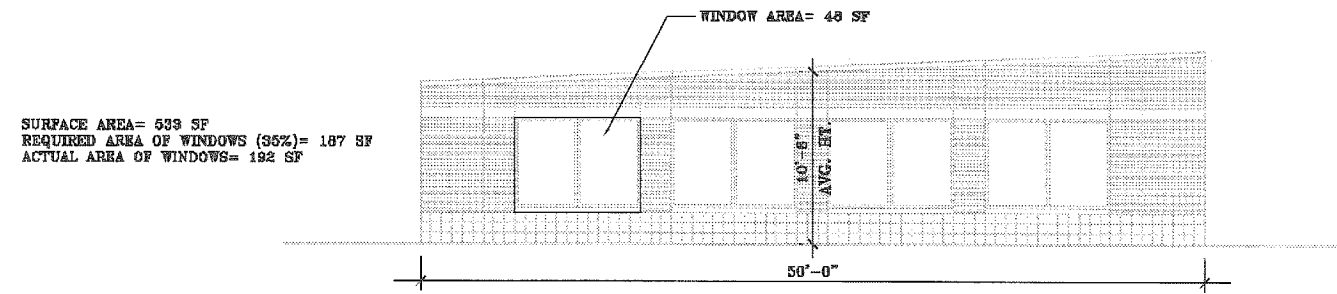


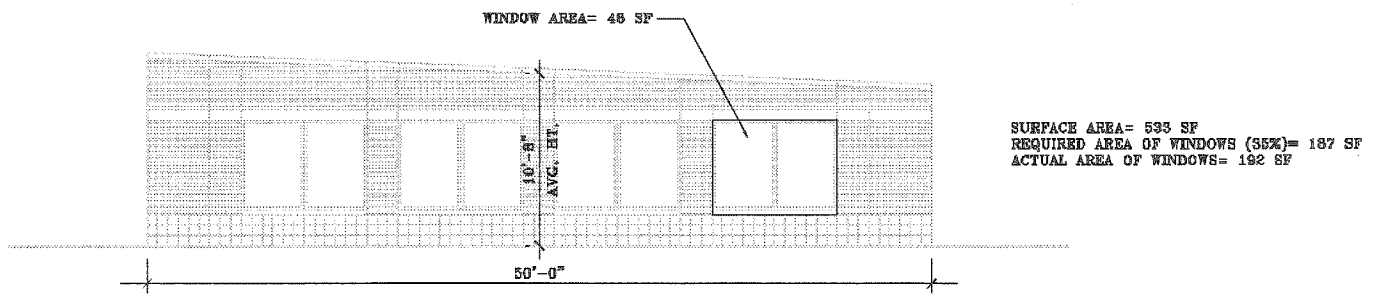
DATE  
 10/30/2007  
 12/10/2008  
 4/15/2009  
 7/1/2009



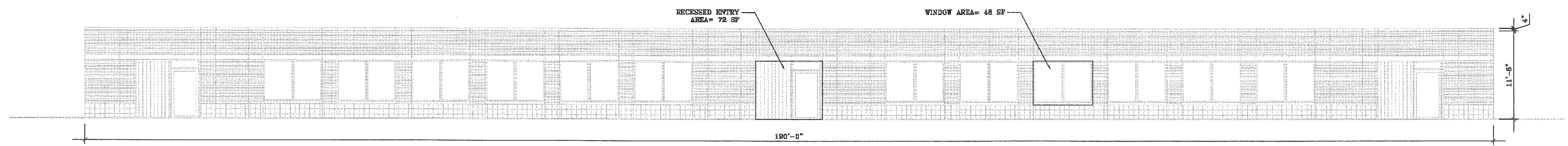
REAR ELEVATION SCALE: 1/8"=1'-0"



LEFT SIDE ELEVATION SCALE: 1/8"=1'-0"



RIGHT SIDE ELEVATION SCALE: 1/8"=1'-0"



FRONT ELEVATION SCALE: 1/8"=1'-0"

REFER TO SHEET A-2 FOR ELEVATION MATERIALS, NOTES AND COLOR SCHEDULE.

John C. Williams, AIA, PA  
 Architect  
 PO Box 1018  
 Hillsborough, NC 27278  
 919 732 6811

PROJECT  
 STORAGE BUILDING FOR  
 CARPENTER VILLAGE COMMERCE  
 2060 SOWTER DRIVE  
 CARY, NORTH CAROLINA

TRANSPARENCY  
 OVERLAY

JOB NO.  
 0731-C  
 SHEET NO.

CARY PROJECT NUMBER: 08-SP-086  
 APPROVED  
 TOWN OF CARY

Approved by DEC Date 8/5/2010  
 Planning KAH Date 8/5/2010  
 Engineering \_\_\_\_\_ Date \_\_\_\_\_

