

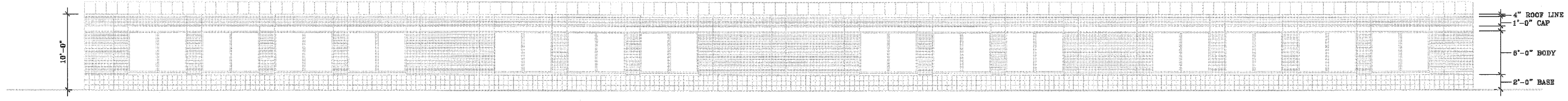
DATE
 10/30/2007
 12/10/2008
 4/15/2009
 7/1/2009

PROJECT
 John C. Williams, AIA, P.A.
 Architect
 PO Box 1018
 Hillsborough, NC 27278
 919 732 6811

PROJECT
 STORAGE BUILDING FOR
 CARPENTER VILLAGE COMMERCE
 2060 SOUTHER DRIVE
 CARY, NORTH CAROLINA

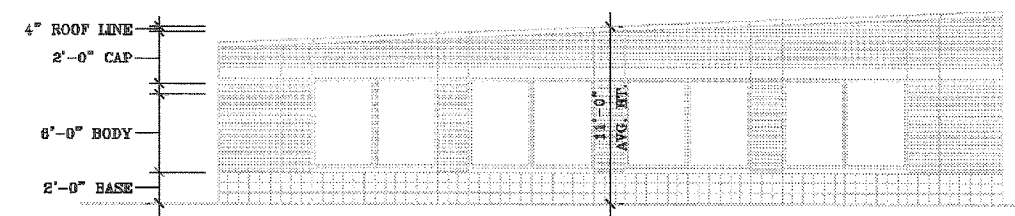
ARTICULATION
 OVERLAY

JOB NO.
 0731-C
 SHEET NO.

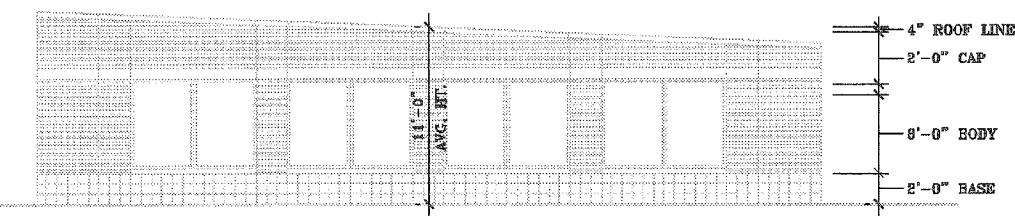


REAR ELEVATION SCALE: 1/8"=1'-0"

TOTAL BUILDING HT.= 10'-0"
 MIN. HT. OF BODY (.50)= 6'-0"
 ACTUAL HT. OF BODY= 8'-0"

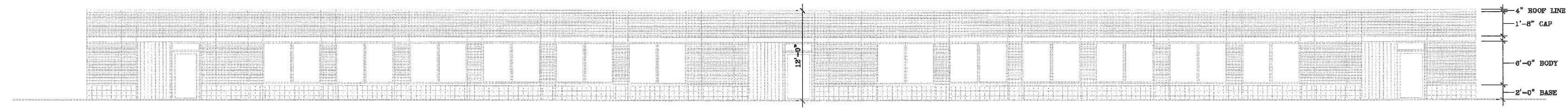


LEFT SIDE ELEVATION SCALE: 1/8"=1'-0"



RIGHT SIDE ELEVATION SCALE: 1/8"=1'-0"

TOTAL BUILDING HT.= 11'-0"
 MIN. HT. OF BODY (.50)= 6'-0"
 ACTUAL HT. OF BODY= 8'-0"



FRONT ELEVATION SCALE: 1/8"=1'-0"

TOTAL BUILDING HT.= 12'-0"
 MIN. HT. OF BODY (.50)= 6'-0"
 ACTUAL HT. OF BODY= 8'-0"

REFER TO SHEET A-2 FOR ELEVATION
 MATERIALS, NOTES AND COLOR SCHEDULE.

CARY PROJECT NUMBER: 08-SP-086
 APPROVED
 TOWN OF CARY

Approved by	<u>DRC</u>	Date	<u>8/15/2010</u>
Planning	<u>WTH</u>	Date	<u>8/15/2010</u>
Engineering		Date	