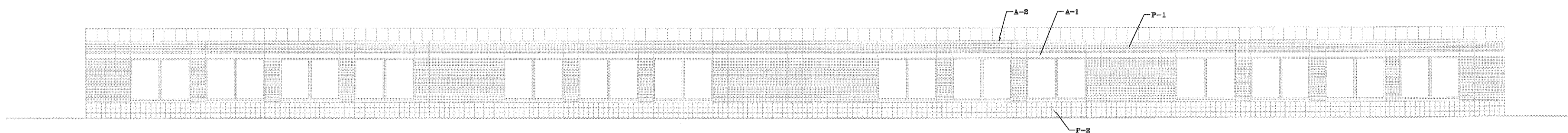
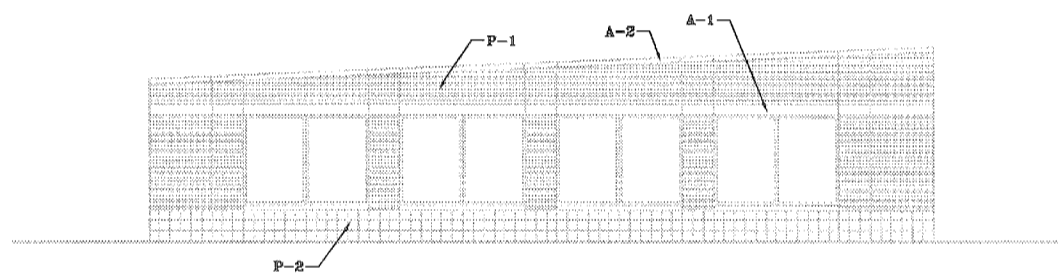


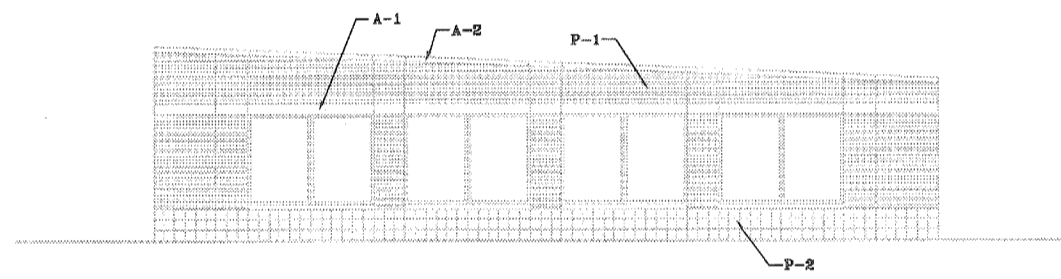
DATE
 10/30/2007
 12/10/2008
 4/15/2009
 7/1/2009



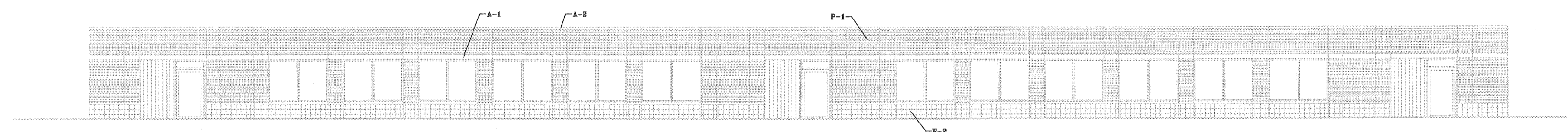
REAR ELEVATION SCALE: 1/8"=1'-0"



LEFT SIDE ELEVATION SCALE: 1/8"=1'-0"



RIGHT SIDE ELEVATION SCALE: 1/8"=1'-0"



FRONT ELEVATION SCALE: 1/8"=1'-0"

PRIMARY COLOR (P-1): BRICK RED
 PRIMARY COLOR (P-2): BLACK WHITE
 ACCENT COLOR (A-1): OFF WHITE
 ACCENT COLOR (A-2): WHITE
 REFER TO SHEETS A1 FOR COMPLETE
 COLOR & MATERIAL LIST

REFER TO SHEET A-2 FOR ELEVATION
 MATERIALS, NOTES AND COLOR SCHEDULE.

John C. Williams, AIA, PA
 Architect
 PO Box 1018
 Hillsborough, NC 27278
 919 732 6811

PROJECT
 STORAGE BUILDING FOR
 CARPENTER VILLAGE COMMERCE
 2060 SOWTER DRIVE
 CARY, NORTH CAROLINA

COLOR
 OVERLAY

JOB NO.
 0731-C
 SHEET NO.

CARY PROJECT NUMBER: 08-SP-086
 APPROVED
 TOWN OF CARY

Approved by: DEC Date: 8/5/2010
 Planning: KAH Date: 8/5/2010
 Engineering: _____ Date: _____

