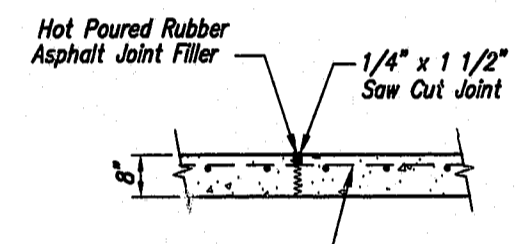


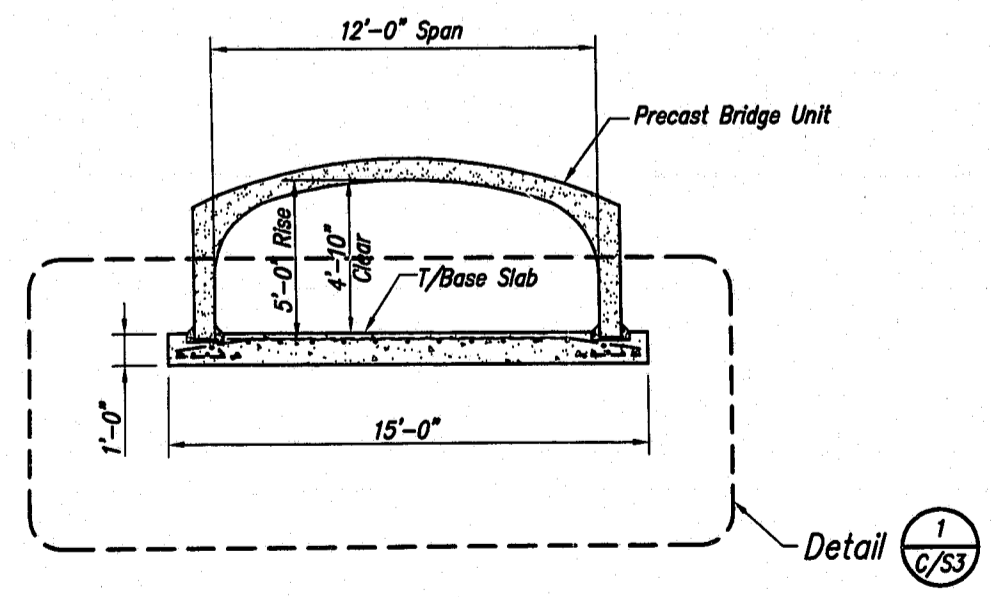
FOUNDATION PLAN

Note:
Lap (3'-0") #6 Longitudinal Bars in Wingwall and Bridge Footings to make continuous.

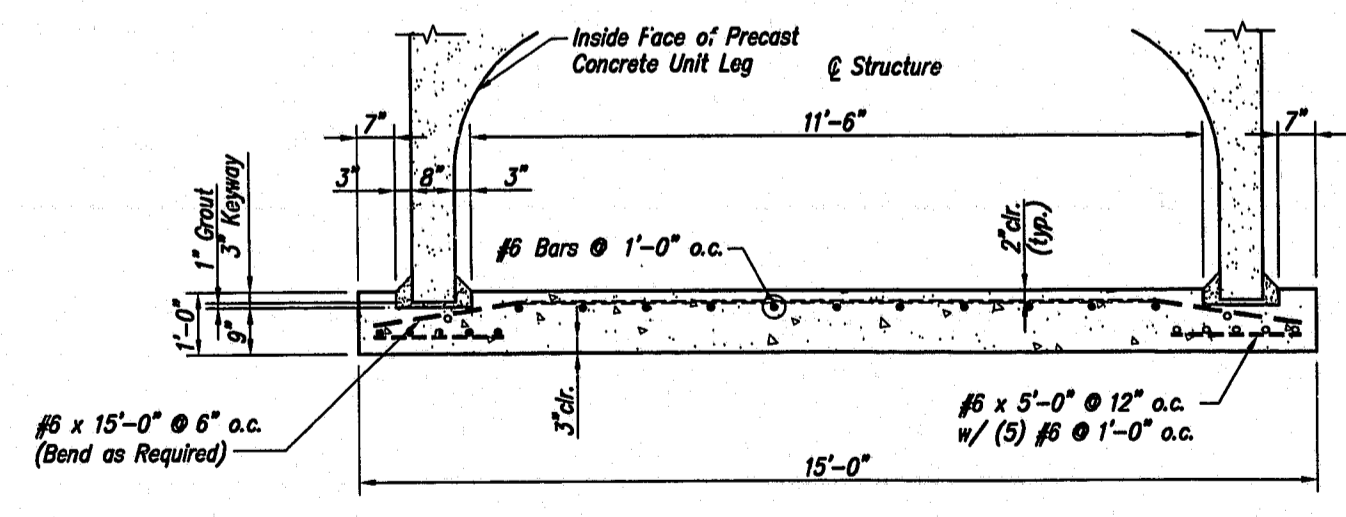


Reinforcing shall be continuous thru joint or be replaced with equiv. dowel bars.

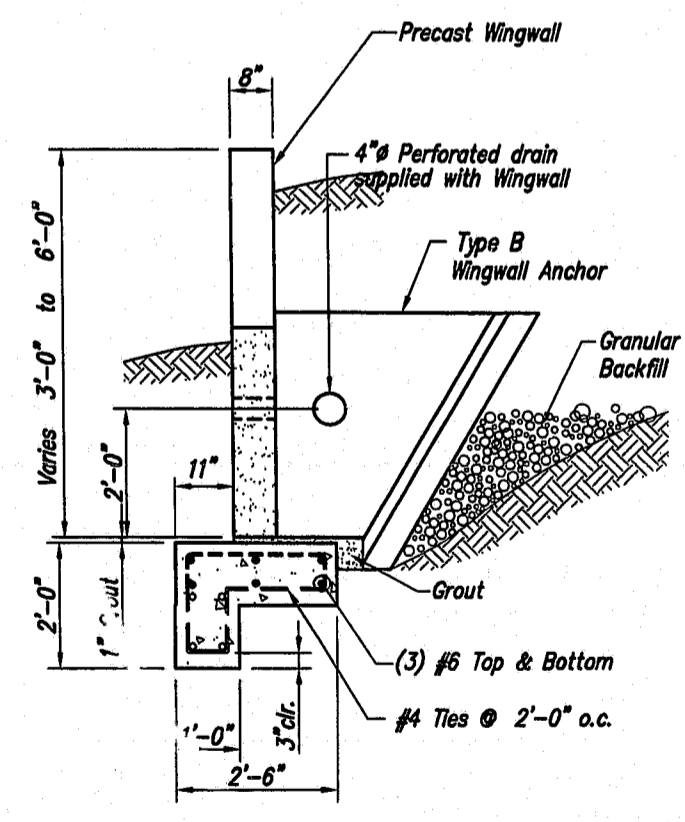
CONTRACTION JOINT



SECTION A

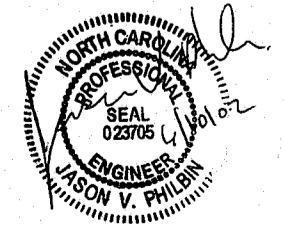


DETAIL 1



SECTION B

02-SP-024
APPROVED
BY: DRC DATE: 5-22-02
BY: TB DATE: 6-12-02
ST 4-17-02
TOWN OF CARY
DEVELOPMENT REVIEW GROUP



No.	Date	By	Description
1	6/6/02	JVP	Log Lengths of Units Adjusted
2			
3			
4			
5			
6			
7			

NOTICE: The design and information shown on this drawing is provided as a service to the project owner, engineer and contractor by COMSPAN Bridge Systems Incorporated. It is the responsibility of the contractor to verify the accuracy of the information and to ensure that the information is used in accordance with the applicable specifications and standards. COMSPAN Bridge Systems Incorporated, its agents, employees, and representatives, shall not be held responsible for any errors or omissions in this drawing or for any consequences arising from its use. The user of this drawing warrants that it is being used for the intended purpose and that it is being used in accordance with the applicable specifications and standards. COMSPAN Bridge Systems Incorporated, its agents, employees, and representatives, shall not be held responsible for any errors or omissions in this drawing or for any consequences arising from its use. The user of this drawing warrants that it is being used for the intended purpose and that it is being used in accordance with the applicable specifications and standards.

Supplied Locally by:
BRIDGETEK
N. CAROLINA
919-359-1038

COMSPAN
BRIDGE SYSTEMS
3100 Research Blvd.
P.O. Box 20268
Dayton, Ohio 45420-0268
(937) 254-2233
(800) 576-3899
Fax (937) 254-4385
Email: info@comspan.com

NORTH CAROLINA
LOUIS STEPHENS DRIVE
Designed: JVP C/S Project No. 9155
Drawn: BKM
Checked: JVP
Date: 2/2/2002
Sheet No. **C/S3**