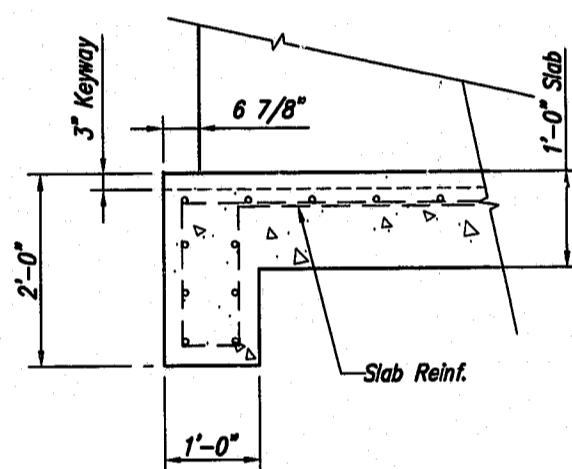
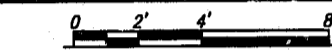
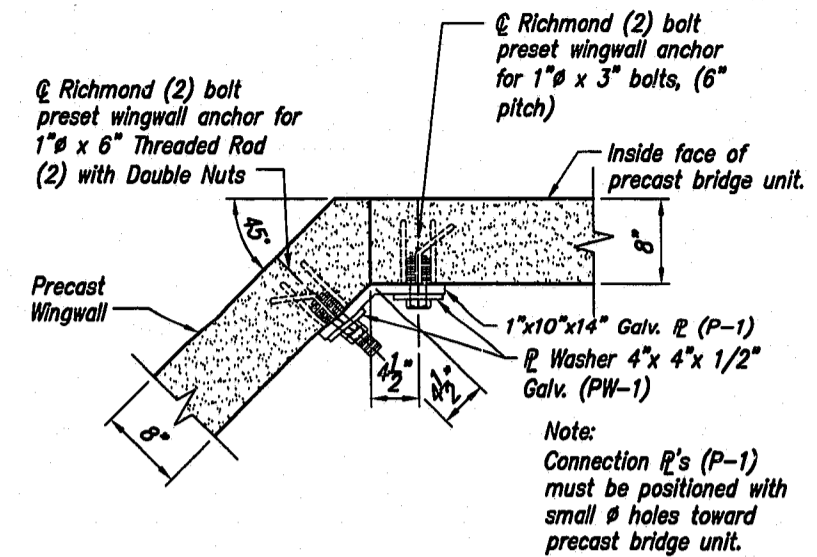


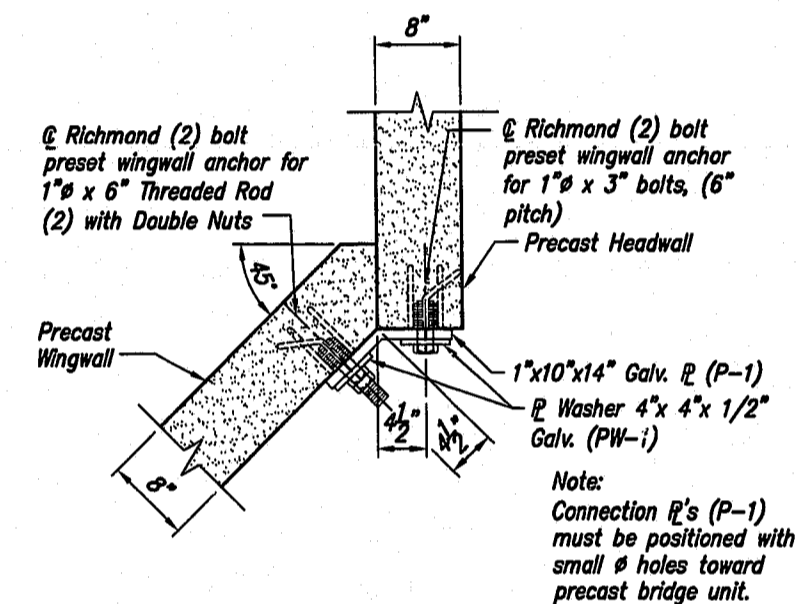
TYPICAL END ELEVATION



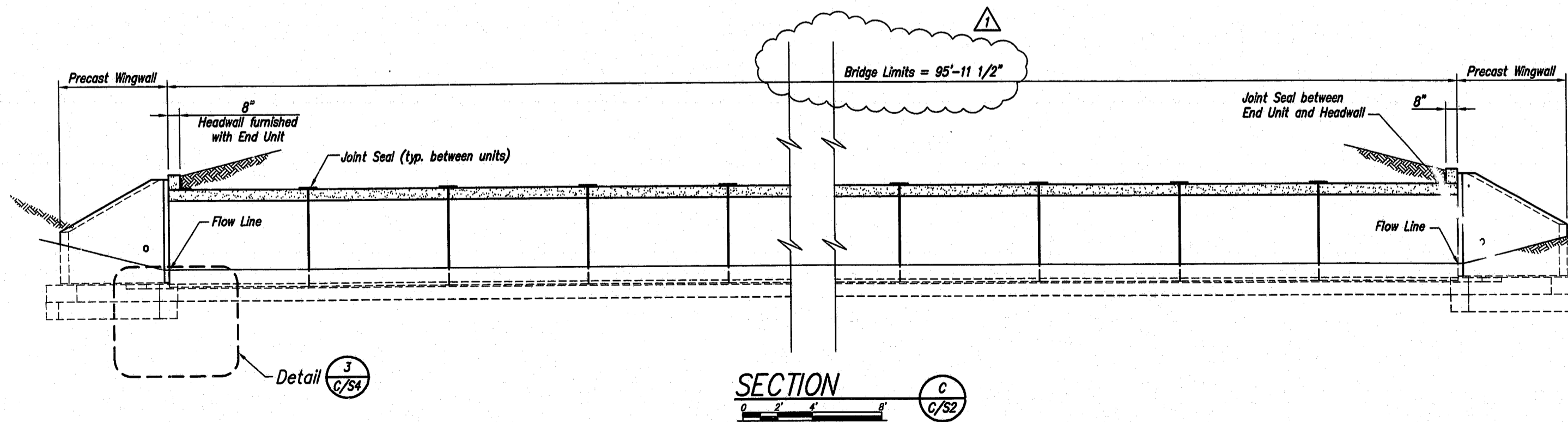
DETAIL 3 C/S4



DETAIL 2a C/S4

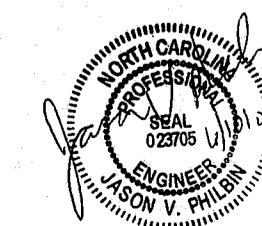


DETAIL 2b C/S4



SECTION C C/S2

02-SP-024
APPROVED
 BY: DRC DATE: 5-28-02
 BY: JS DATE: 6-12-02
 TOWN OF CARY
 DEVELOPMENT REVIEW GROUP



The design and information shown on this drawing is provided as a service to the project owner, engineer and contractor by CONIBRAN Bridge Systems Incorporated. They are not to be used for any other project without the written consent of CONIBRAN Bridge Systems Incorporated. Any unauthorized use or reproduction of this information is strictly prohibited. © CONIBRAN Bridge Systems Incorporated. If discrepancies between the provided information and actual field conditions are encountered as site work progresses, these discrepancies must be reported to CONIBRAN Bridge Systems Incorporated immediately for re-evaluation of the design. CONIBRAN Bridge Systems Incorporated accepts no liability for designs based on inaccurate information supplied by others. The CONIBRAN Arch Culvert and wingwalls are protected by one or more of the following U.S. Patent Numbers: 4852514, 4852515, 4971033, 4851725, 4853872.				
7	1	6/6/02	1	Loj Lengths of Units Adjusted
6	2			
5	3			
4	4			
3	5			
2	6			
1	7			
Supplied Locally by: BRIDGE TEK N. CAROLINA 919-359-1038				
CONIBRAN BRIDGE SYSTEMS (817) 254-2133 (800) 595-3609 Fax: (817) 254-8365 Email: info@brn.com				
3100 Research Blvd. P.O. Box 20206 Dayton, Ohio 45420-0206				
NORTH CAROLINA LOUIS STEPHENS DRIVE				
Designed	JVP	C/S Project No.	9155	
Drawn	BKM	Sheet No.	C/S4	
Checked	JVP	Date	2/2/2002	