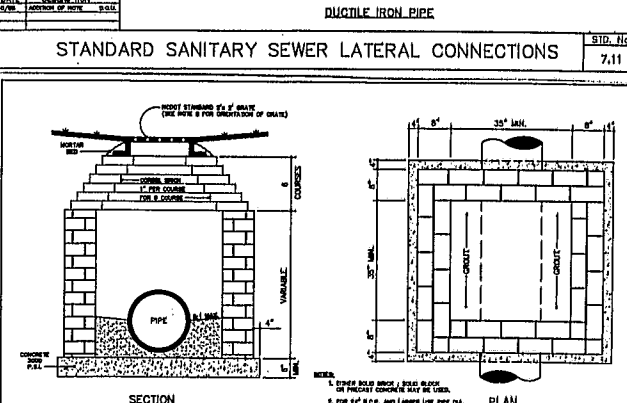
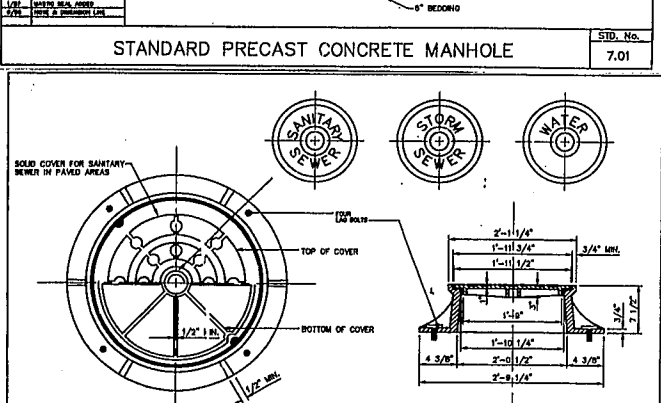


MINIMUM CONCRETE BLOCKING (C.V.)*

FROM PIPE DIA. IN.	1/2" & 3/4" DIA. ENDS	1" DIA. ENDS	1 1/2" DIA. ENDS	2" DIA. ENDS	2 1/2" DIA. ENDS	3" DIA. ENDS
4	1/2	1/2	1/2	1/2	1/2	1/2
6	1/2	1/2	1/2	1/2	1/2	1/2
8	1/2	1/2	1/2	1/2	1/2	1/2
10	3/4	3/4	1/2	1/2	1/2	1/2
12	3/4	1.0	3/4	1/2	1/2	1/2
14	1.0	1-1/2	3/4	1/2	1/2	1/2
16	1-1/2	2.0	1.0	1/2	1/2	1/2
18	1-2/3	2-1/3	1-1/2	3/4	1/2	1/2
20	2.0	3.0	1-2/3	3/4	1/2	1/2
24	3.0	4-1/3	2-2/3	1-1/2	1-1/2	3/4

DATE: 10/20/99
 REVISIONS:
 1. 1/2" DIA. BRASS VALVE
 2. 1/2" DIA. BRASS VALVE
 3. 1/2" DIA. BRASS VALVE

STANDARD REACTION BLOCKING 6.13



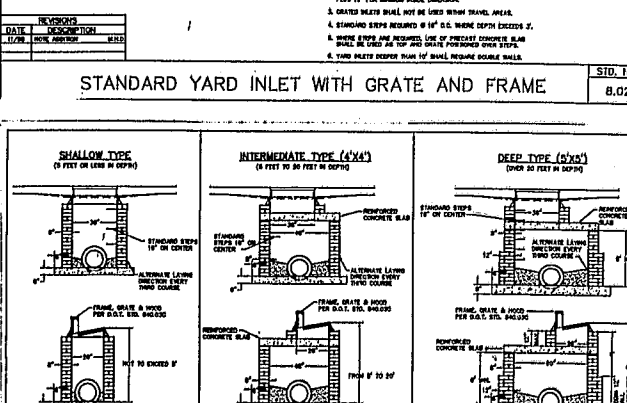
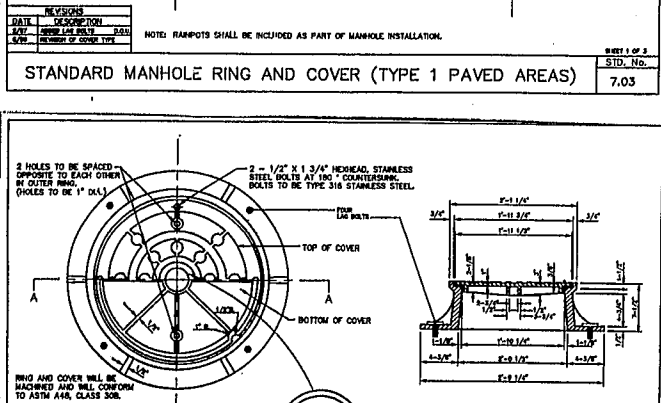
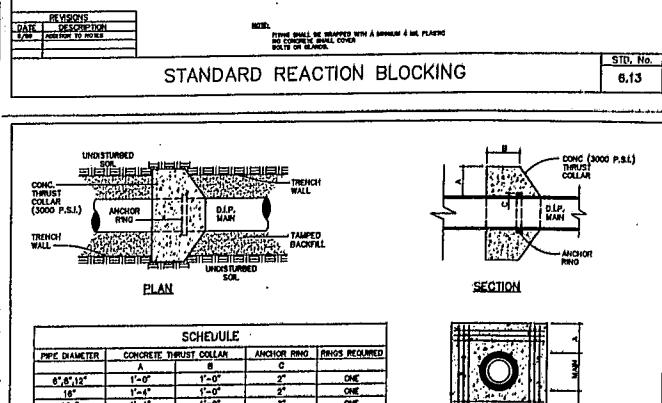
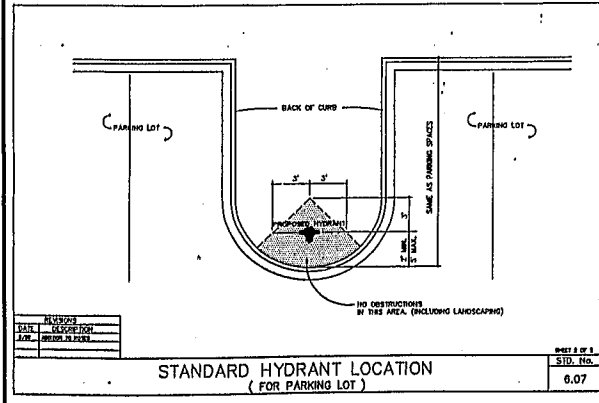
SHOULDERS, SIDE DITCHES, SLOPES (Medium to 2:1)

Date	Type*	Planting Rate
Aug 15 - Nov 1	Tall Fescue or Hard Fescue	300 lb./acre
Nov 1 - Mar 1	Tall Fescue and Abruzzi Rye or Annual Rye	300 lb./acre
Mar 1 - Apr 15	Tall Fescue or Hard Fescue	300 lb./acre
Apr 15 - June 30	Hulled Common Bermuda grass, Weeping Love Grass	25 lb./acre
July 15 - Aug 15	Tall Fescue and ***Blowout Millet ***Sorghum-Sudan Hybrids	35 lb./acre

Consult Erosion Control Officer or NRCS for additional alternatives for vegetating denuded areas. The above vegetation rates are those which do well under local conditions; other seeding rate combinations are possible.

*Temporary - Re-seed according to optimum season for desired permanent vegetation. Do not allow temporary cover to grow over 12 inches in height before mowing to keep fescue from being shaded out.

**Bahia grass shall not be used in Town maintained areas.



SHOULDERS, SIDE DITCHES, SLOPES (3:1 and 2:1) (not mowed)

Date	Type*	Planting Rate
Mar 1 - June 1	Sericea Lepedeza (scarified) and Add Tall Fescue	50 lb./acre 120 lb./acre
Mar 1 - Apr 15	Add Tall Fescue	10 lb./acre
Mar 1 - June 30	Add Weeping Lovegrass	10 lb./acre
Mar 1 - June 30	Add Hulled Common Bermuda grass	25 lb./acre
June 1 - Sept 1	**Tall Fescue and ***Blowout Millet ***Sorghum-Sudan Hybrids	120 lb./acre 35 lb./acre 30 lb./acre
Sept 1 - Mar 1	Sericea Lepedeza (unhulled/unscarified) and Add Abruzzi Rye or Annual Rye	70 lb./acre 120 lb./acre 25 lb./acre

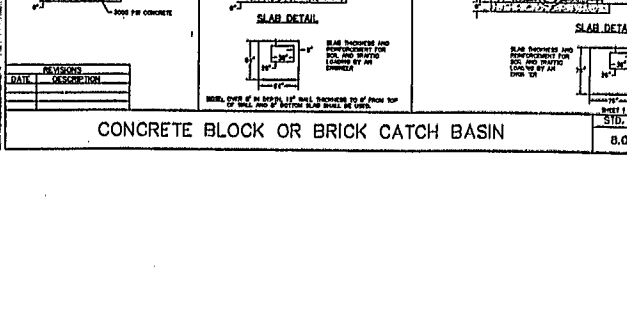
Consult Erosion Control Officer or NRCS for additional alternatives for vegetating denuded areas. The above vegetation rates are those which do well under local conditions; other seeding rate combinations are possible.

*Temporary - Re-seed according to optimum season for desired permanent vegetation. Do not allow temporary cover to grow over 12 inches in height before mowing to keep fescue from being shaded out.

**Bahia grass shall not be used in Town maintained areas.

- The construction sequence on projects shall be as follows:
1. Obtain grading permit;
 2. Install all erosion control measures as shown;
 3. Obtain certificate of compliance through on-site inspection by Erosion Control Officer;
 4. Proceed with grading;
 5. Clean sediment basins when one-half full;
 6. Seed and mulch denuded area within 30 days after finished grades are established;
 7. Maintain soil erosion control measures until permanent ground cover is established;
 8. Request final approval by Erosion Control Officer;
 9. Remove soil erosion control measures and stabilize these areas.

Seeding and Mulching shall be done immediately following construction. All disturbed areas shall be dressed to a depth of 8 inches. The top 3 inches shall be pulverized to provide a uniform seedbed. Agricultural lime shall be applied at the rate of 95 lb./1000 sq. ft. immediately before plowing. Grass seed shall be applied at the rates outlined in Tables 4.1 and 4.2. In areas where maintenance will eventually be assumed by the Town under heavy vehicular traffic situations



SHOULDERS, SIDE DITCHES, SLOPES (Medium to 2:1)

Date	Type*	Planting Rate
Aug 15 - Nov 1	Tall Fescue or Hard Fescue	300 lb./acre
Nov 1 - Mar 1	Tall Fescue and Abruzzi Rye or Annual Rye	300 lb./acre
Mar 1 - Apr 15	Tall Fescue or Hard Fescue	300 lb./acre
Apr 15 - June 30	Hulled Common Bermuda grass, Weeping Love Grass	25 lb./acre
July 15 - Aug 15	Tall Fescue and ***Blowout Millet ***Sorghum-Sudan Hybrids	35 lb./acre

Consult Erosion Control Officer or NRCS for additional alternatives for vegetating denuded areas. The above vegetation rates are those which do well under local conditions; other seeding rate combinations are possible.

*Temporary - Re-seed according to optimum season for desired permanent vegetation. Do not allow temporary cover to grow over 12 inches in height before mowing to keep fescue from being shaded out.

**Bahia grass shall not be used in Town maintained areas.

APPROVED
 722 11-8-99
 JTP 11/8/99