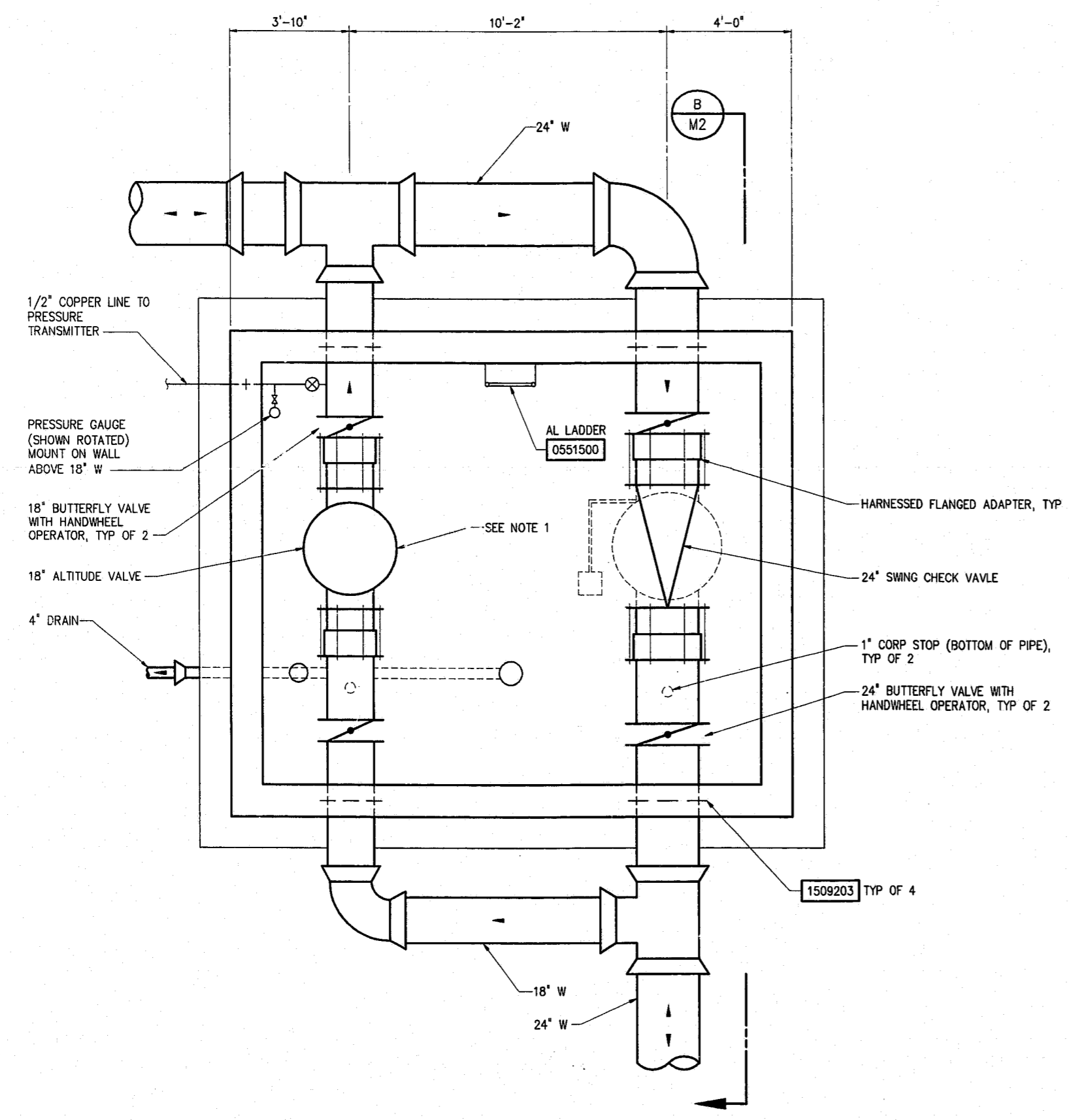
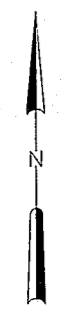
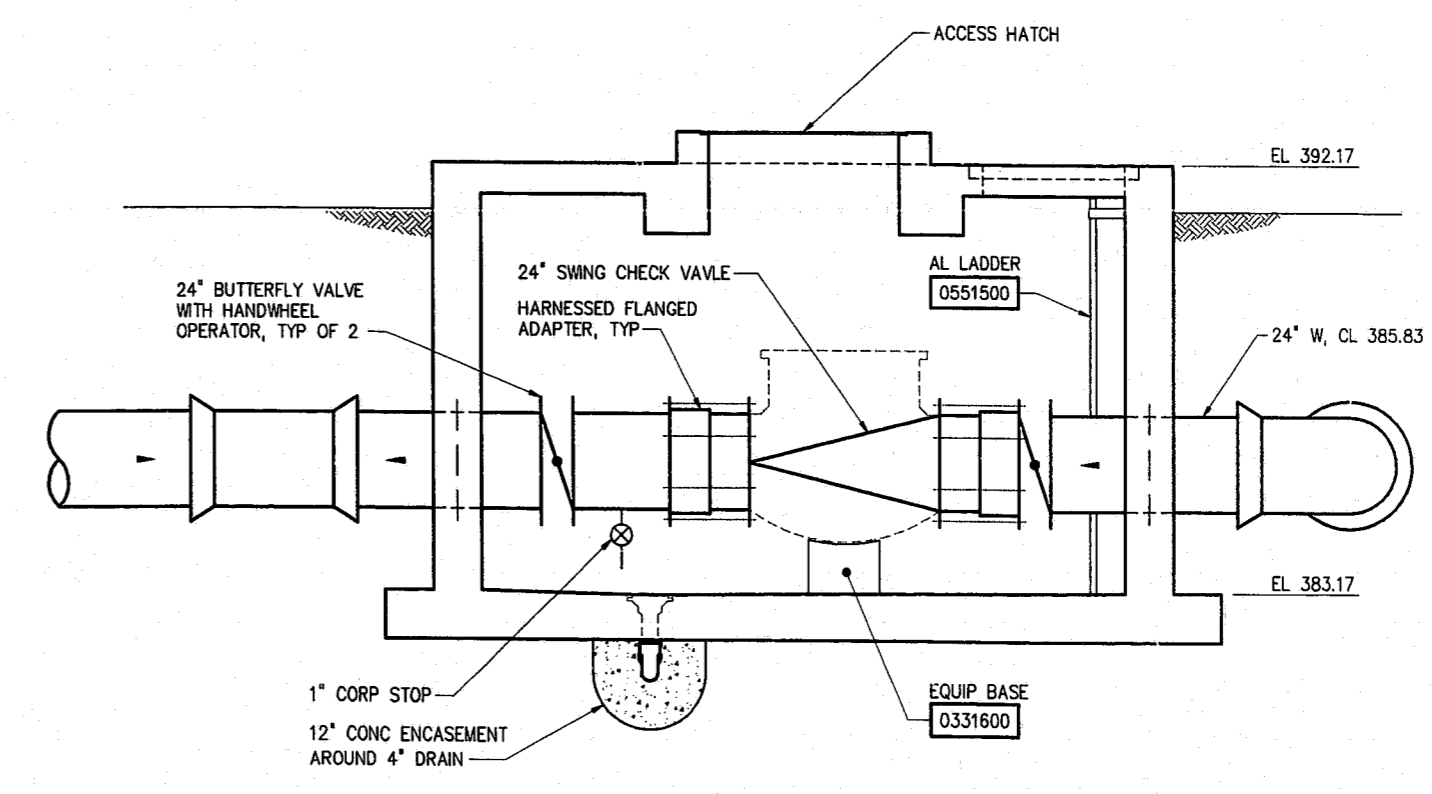


NOTES:
 1. TAPS ASSOCIATED WITH THE ALTITUDE VALVE SHALL BE LOCATED ON THE RIGHT SIDE OF THE VALVE (WHEN FACING THE DIRECTION OF FLOW).



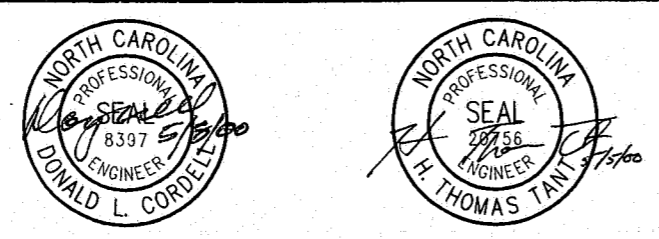
PLAN
 1/2"=1'-0"



SECTION B
 1/2"=1'-0" M2

00-SP-047
APPROVED
 JG-8/3/00
 JH 8/3/00

DESIGNED	HTT
DRAWN	WDR
CHECKED	<i>HTT</i>
PROLENGR.	HTT
APPROVED	<i>HTT</i>
NO.	ISSUED FOR
2	CONSTRUCTION 5/00 HTT
1	REGULATORY APPROVAL 4/00 HTT
	DATE BY



HAZEN AND SAWYER
 Environmental Engineers & Scientists
 4011 WestChase Blvd, Raleigh, North Carolina 27607

TOWN OF CARY, NC -
 ENGINEERING DIVISION
2 MG CARPENTER ELEVATED
WATER STORAGE TANK

ALTITUDE VALVE VAULT
 MECHANICAL
 PLANS AND SECTION

THE SCALE BAR SHOWN BELOW MEASURES ONE INCH LONG ON THE ORIGINAL DRAWING.	DATE	APRIL 2000
	H & S JOB NUMBER	2825
	CONTRACT NUMBER	1
	DRAWING NUMBER	M2
	SHEET	7 OF 20