

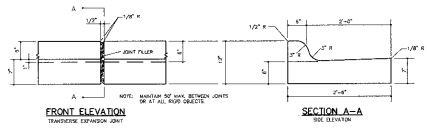
NOTES:  
 1. PAVEMENT DESIGN SHALL BE COMPLETED PRIOR TO PLACEMENT OF STONE BASE FOR ALL ROADWAYS.  
 2. STREETS MAY BE LEFT 1-1/4\"/>

TYPICAL ROADWAY SECTION  
 RO02 (STA. 17+00 - STA. 20+25)

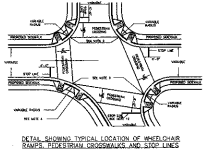
NOTE FROM 15+74.46 TO 17+05 BACK TO BACK DIMENSIONS VARY DUE TO TRANSITION FOR ROUND-A-BOUT

A.B.C. UNDER 2'-6\"/>

STANDARD WHEELCHAIR RAMP

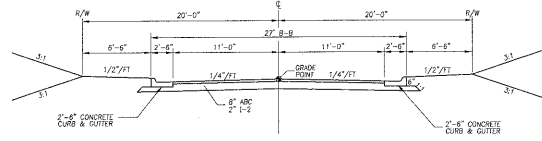


COMBINATION CURB AND GUTTER



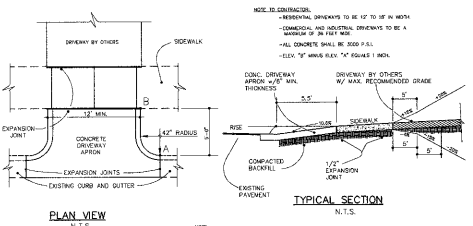
STANDARD WHEELCHAIR RAMP

NOTES:  
 1. THE WALKING SURFACE SHALL BE SUFFICIENTLY FIRM AND EVEN TO BE TRAVELLED BY WHEELCHAIR. THE SURFACE SHALL BE FINISHED WITH A SMOOTH, SLIP-RESISTANT FINISH. THE SURFACE SHALL BE FINISHED WITH A SMOOTH, SLIP-RESISTANT FINISH. THE SURFACE SHALL BE FINISHED WITH A SMOOTH, SLIP-RESISTANT FINISH.  
 2. CROSSWALK WIDTHS AND CONSTRUCTION SHALL CONFORM TO TYPICAL DESIGN DIMENSIONS.  
 3. WALKING SURFACES SHALL BE FINISHED WITH A SMOOTH, SLIP-RESISTANT FINISH. THE SURFACE SHALL BE FINISHED WITH A SMOOTH, SLIP-RESISTANT FINISH. THE SURFACE SHALL BE FINISHED WITH A SMOOTH, SLIP-RESISTANT FINISH.  
 4. WALKING SURFACES SHALL BE FINISHED WITH A SMOOTH, SLIP-RESISTANT FINISH. THE SURFACE SHALL BE FINISHED WITH A SMOOTH, SLIP-RESISTANT FINISH. THE SURFACE SHALL BE FINISHED WITH A SMOOTH, SLIP-RESISTANT FINISH.  
 5. THE WALKING SURFACE SHALL BE FINISHED WITH A SMOOTH, SLIP-RESISTANT FINISH. THE SURFACE SHALL BE FINISHED WITH A SMOOTH, SLIP-RESISTANT FINISH. THE SURFACE SHALL BE FINISHED WITH A SMOOTH, SLIP-RESISTANT FINISH.  
 6. THE WALKING SURFACE SHALL BE FINISHED WITH A SMOOTH, SLIP-RESISTANT FINISH. THE SURFACE SHALL BE FINISHED WITH A SMOOTH, SLIP-RESISTANT FINISH. THE SURFACE SHALL BE FINISHED WITH A SMOOTH, SLIP-RESISTANT FINISH.  
 7. THE WALKING SURFACE SHALL BE FINISHED WITH A SMOOTH, SLIP-RESISTANT FINISH. THE SURFACE SHALL BE FINISHED WITH A SMOOTH, SLIP-RESISTANT FINISH. THE SURFACE SHALL BE FINISHED WITH A SMOOTH, SLIP-RESISTANT FINISH.  
 8. THE WALKING SURFACE SHALL BE FINISHED WITH A SMOOTH, SLIP-RESISTANT FINISH. THE SURFACE SHALL BE FINISHED WITH A SMOOTH, SLIP-RESISTANT FINISH. THE SURFACE SHALL BE FINISHED WITH A SMOOTH, SLIP-RESISTANT FINISH.  
 9. THE WALKING SURFACE SHALL BE FINISHED WITH A SMOOTH, SLIP-RESISTANT FINISH. THE SURFACE SHALL BE FINISHED WITH A SMOOTH, SLIP-RESISTANT FINISH. THE SURFACE SHALL BE FINISHED WITH A SMOOTH, SLIP-RESISTANT FINISH.  
 10. THE WALKING SURFACE SHALL BE FINISHED WITH A SMOOTH, SLIP-RESISTANT FINISH. THE SURFACE SHALL BE FINISHED WITH A SMOOTH, SLIP-RESISTANT FINISH. THE SURFACE SHALL BE FINISHED WITH A SMOOTH, SLIP-RESISTANT FINISH.  
 11. THE WALKING SURFACE SHALL BE FINISHED WITH A SMOOTH, SLIP-RESISTANT FINISH. THE SURFACE SHALL BE FINISHED WITH A SMOOTH, SLIP-RESISTANT FINISH. THE SURFACE SHALL BE FINISHED WITH A SMOOTH, SLIP-RESISTANT FINISH.  
 12. THE WALKING SURFACE SHALL BE FINISHED WITH A SMOOTH, SLIP-RESISTANT FINISH. THE SURFACE SHALL BE FINISHED WITH A SMOOTH, SLIP-RESISTANT FINISH. THE SURFACE SHALL BE FINISHED WITH A SMOOTH, SLIP-RESISTANT FINISH.  
 13. THE WALKING SURFACE SHALL BE FINISHED WITH A SMOOTH, SLIP-RESISTANT FINISH. THE SURFACE SHALL BE FINISHED WITH A SMOOTH, SLIP-RESISTANT FINISH. THE SURFACE SHALL BE FINISHED WITH A SMOOTH, SLIP-RESISTANT FINISH.  
 14. THE WALKING SURFACE SHALL BE FINISHED WITH A SMOOTH, SLIP-RESISTANT FINISH. THE SURFACE SHALL BE FINISHED WITH A SMOOTH, SLIP-RESISTANT FINISH. THE SURFACE SHALL BE FINISHED WITH A SMOOTH, SLIP-RESISTANT FINISH.  
 15. THE WALKING SURFACE SHALL BE FINISHED WITH A SMOOTH, SLIP-RESISTANT FINISH. THE SURFACE SHALL BE FINISHED WITH A SMOOTH, SLIP-RESISTANT FINISH. THE SURFACE SHALL BE FINISHED WITH A SMOOTH, SLIP-RESISTANT FINISH.  
 16. THE WALKING SURFACE SHALL BE FINISHED WITH A SMOOTH, SLIP-RESISTANT FINISH. THE SURFACE SHALL BE FINISHED WITH A SMOOTH, SLIP-RESISTANT FINISH. THE SURFACE SHALL BE FINISHED WITH A SMOOTH, SLIP-RESISTANT FINISH.  
 17. THE WALKING SURFACE SHALL BE FINISHED WITH A SMOOTH, SLIP-RESISTANT FINISH. THE SURFACE SHALL BE FINISHED WITH A SMOOTH, SLIP-RESISTANT FINISH. THE SURFACE SHALL BE FINISHED WITH A SMOOTH, SLIP-RESISTANT FINISH.  
 18. THE WALKING SURFACE SHALL BE FINISHED WITH A SMOOTH, SLIP-RESISTANT FINISH. THE SURFACE SHALL BE FINISHED WITH A SMOOTH, SLIP-RESISTANT FINISH. THE SURFACE SHALL BE FINISHED WITH A SMOOTH, SLIP-RESISTANT FINISH.  
 19. THE WALKING SURFACE SHALL BE FINISHED WITH A SMOOTH, SLIP-RESISTANT FINISH. THE SURFACE SHALL BE FINISHED WITH A SMOOTH, SLIP-RESISTANT FINISH. THE SURFACE SHALL BE FINISHED WITH A SMOOTH, SLIP-RESISTANT FINISH.  
 20. THE WALKING SURFACE SHALL BE FINISHED WITH A SMOOTH, SLIP-RESISTANT FINISH. THE SURFACE SHALL BE FINISHED WITH A SMOOTH, SLIP-RESISTANT FINISH. THE SURFACE SHALL BE FINISHED WITH A SMOOTH, SLIP-RESISTANT FINISH.



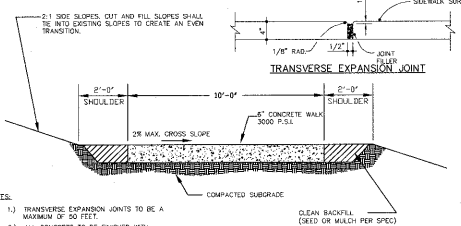
TYPICAL ROADWAY SECTION  
 RO04, RO07, RO08 (STA. 13+50 - END)  
 R010\_R

STANDARD CONCRETE CURB AND GUTTER



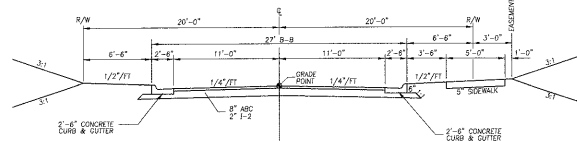
TYPICAL SECTION

STANDARD WHEELCHAIR RAMP



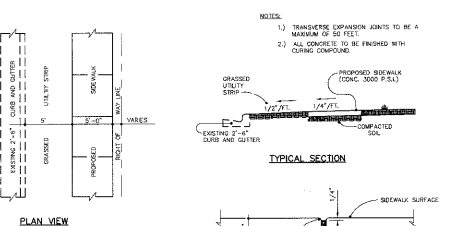
TRANSVERSE EXPANSION JOINT

NOTES:  
 1. TRANSVERSE EXPANSION JOINTS TO BE A MAXIMUM OF 50 FEET.  
 2. ALL CONCRETE TO BE FINISHED WITH CURING COMPOUND.



TYPICAL ROADWAY SECTION  
 RO08 (STA. 11+75 - STA. 13+50)

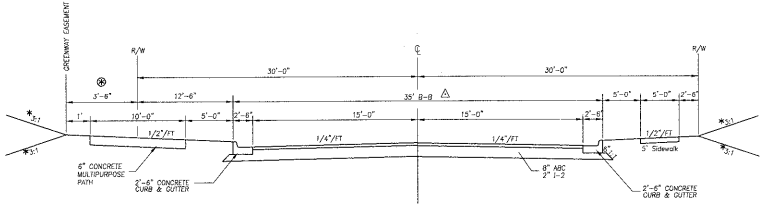
STANDARD DRIVEWAY APRON



TYPICAL SECTION

10'-0\"/>

NOTES:  
 1. DRIVE SLOPE DIRECTION VARIES. SEE LAYOUT PLANS FOR DIRECTION OF SLOPE.  
 2. CONTRACTOR IS RESPONSIBLE FOR RE-ESTABLISHING ALL SLOPES DISTURBED BY CONSTRUCTION.



TYPICAL ROADWAY SECTION  
 RO01 (STA. 9+77.18 - 17+91.53, STA. 22+25 - 33+08.46)

NOTE: SHOULDER WIDTHS VARY TO ALLOW FOR MEANDERING OF MULTI-USE PATH. REFER TO PLAN VIEW AND PROVIDE MINIMUM 1' SHOULDER BEHIND THE BACK EDGE OF THE PATH. HOLD SHOULDER GRADE @ 1/2\"/>

NOTE FROM 17+91.53 TO 33+08.46 BACK TO BACK DIMENSIONS VARY DUE TO TRANSITION FOR ROUND-A-BOUT  
 \* FROM STA. 10+00 - STA 14+50 - USE 2:1 SIDE SLOPES

04-SB-012  
 APPROVED  
 TOWN OF CARY

Approved by: [Signature] Date: 05/01/05  
 Planning: [Signature] Date: 05/01/05  
 Engineering: [Signature] Date: 05/01/05



No.	Revision	Date	By	Designer	Scale
A	TRC 1st REVIEW COMMENTS	2/26/04	GAS		AS NOTED
B	TRC 2nd REVIEW COMMENTS	3/21/04	GAS		
C	TRC 3rd REVIEW COMMENTS	4/25/04	GAS		
D	TRC APPROVAL	4/20/04	GAS		

CARRAMORE SUBDIVISION  
 PHASE II

ROADWAY DETAILS

**WITHERS & RAVENEL**  
 ENGINEERS | PLANNERS | SURVEYORS  
 111 MacKinnon Drive, Cary, North Carolina 27511 | tel: 919-467-3340 | fax: 919-467-6008 | www.wITHERSRAVENEL.com