

**Cary Academy
Field House**

Cary, NC

Owner

Cary Academy
1500 North Harrison Avenue
Cary, NC 27513
(919) 677-3873

Architect

RATIO Architects, Inc.
135 E Martin Street
Raleigh, NC 27601
(919) 821-0805

Structural Engineer

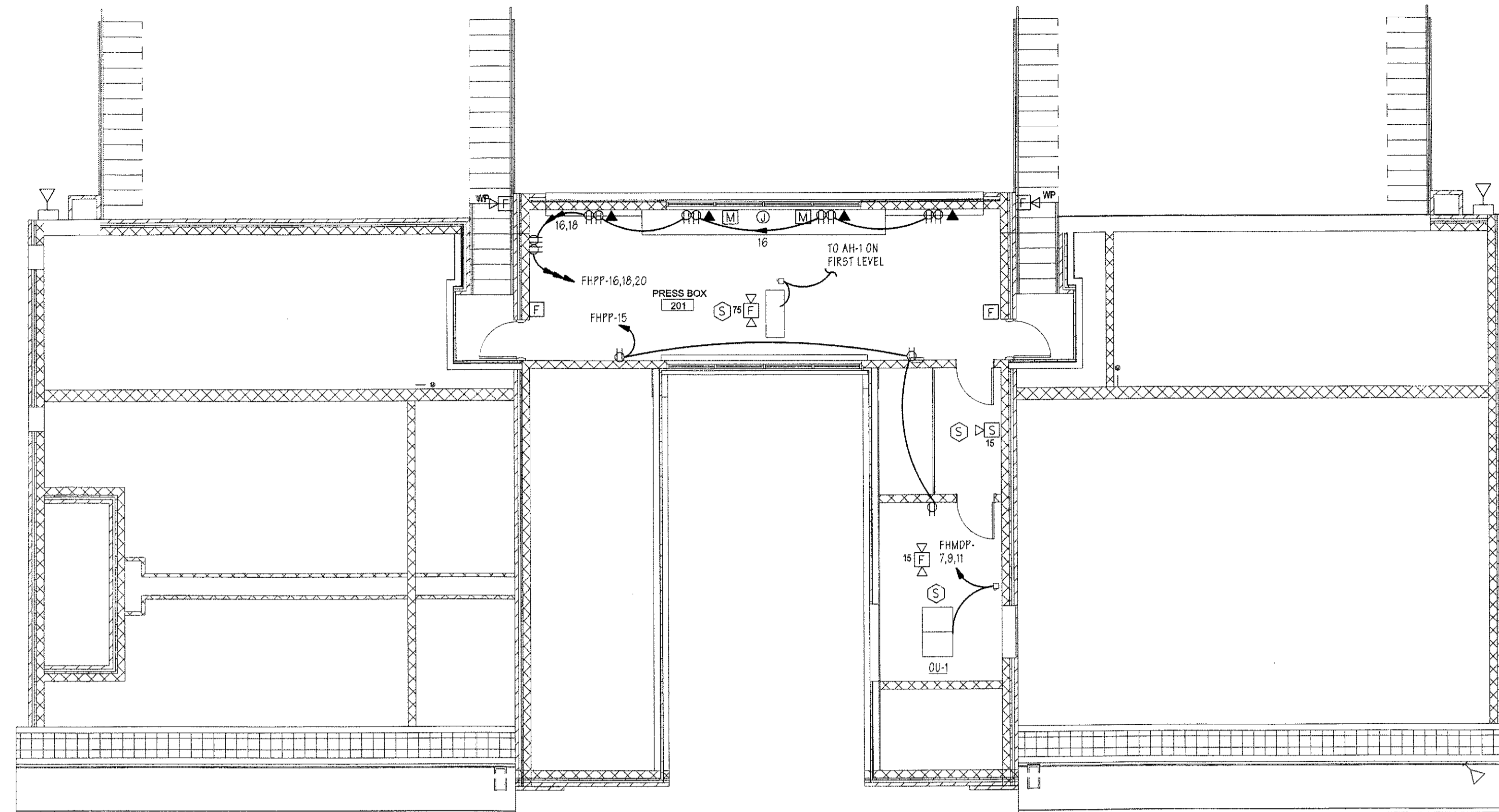
LHC Engineers
1015 Wade Avenue
Raleigh, NC 27605
(919) 833-0495

Plumbing, Mechanical, Electrical, Civil Engineer

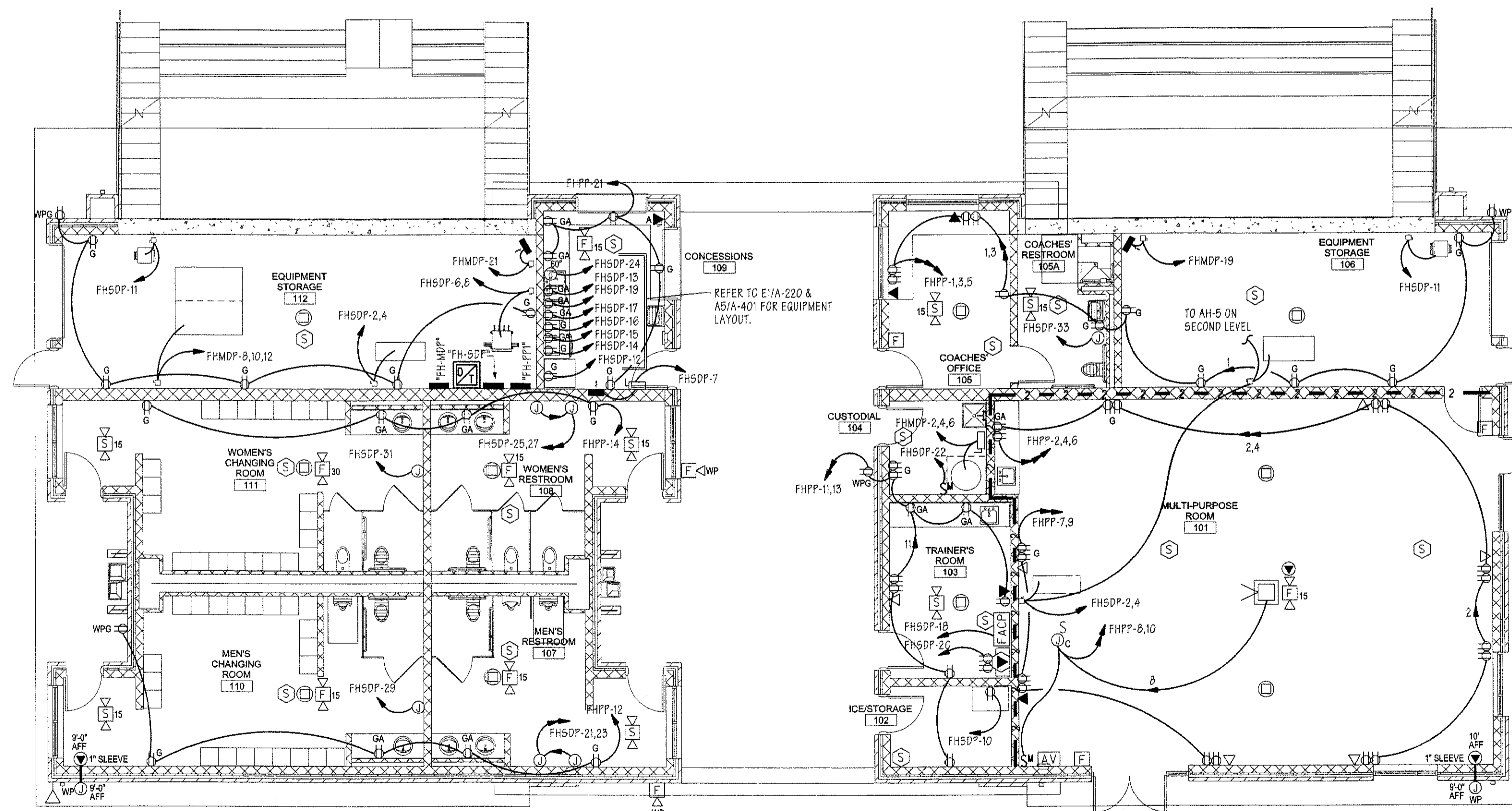
The Wooten Company
120 North Boylan Avenue
Raleigh, NC 27603
(919) 828-0531

Landscape Architect

McNeely Associates
5501 McNeely Drive
Raleigh, NC 27612
(919) 782-9677



2 SECOND LEVEL POWER PLAN
E101 SCALE: 1/8" = 1'-0"



1 FIRST LEVEL POWER PLAN
E101 SCALE: 1/8" = 1'-0"

**SITE PLAN
REVISION TO 06-SP-006
CONSTRUCTION DOCUMENTS**

REISSUE

CHECKED BY

REE

APPROVED BY

REE

PROJECT NO.

11011.100



RATIO
ARCHITECTS, INC.
135 E. MARTIN STREET
RALEIGH, NC 27601
PH: 919.821.0805
FAX: 919.821.0805
WWW.RATIOARCHITECTS.COM

**SHEET TITLE
POWER PLANS**

14-SP-013
HTE#: N/A
Approved by the Town of Cary
Development Review Committee

Planner *R.H.* Date: *8/19/2014*

SHEET NUMBER

E101