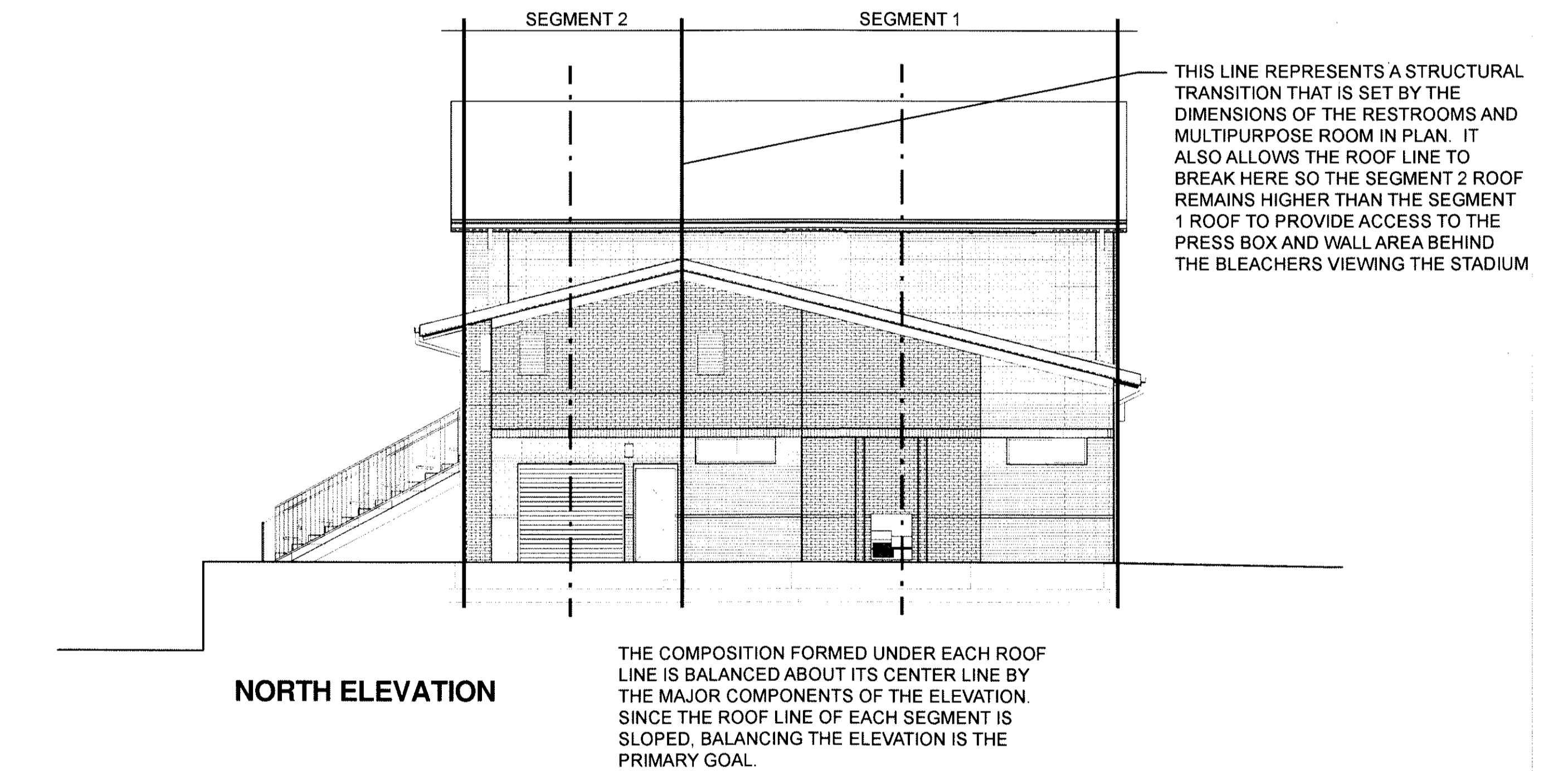
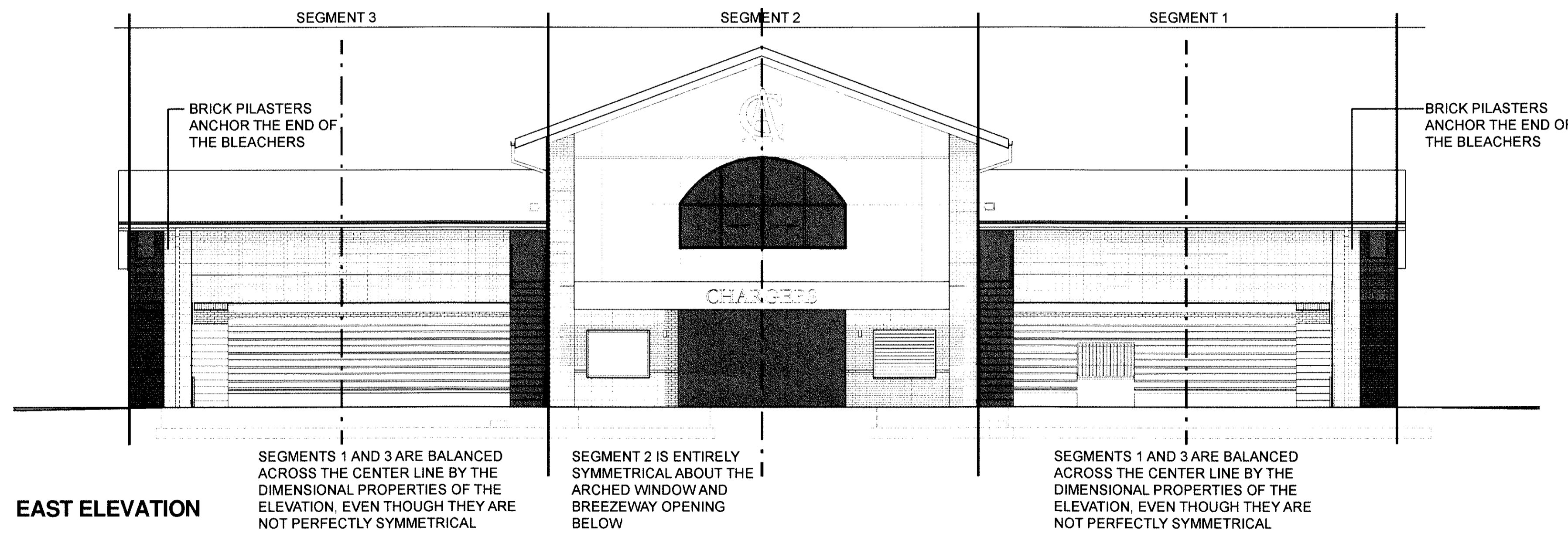
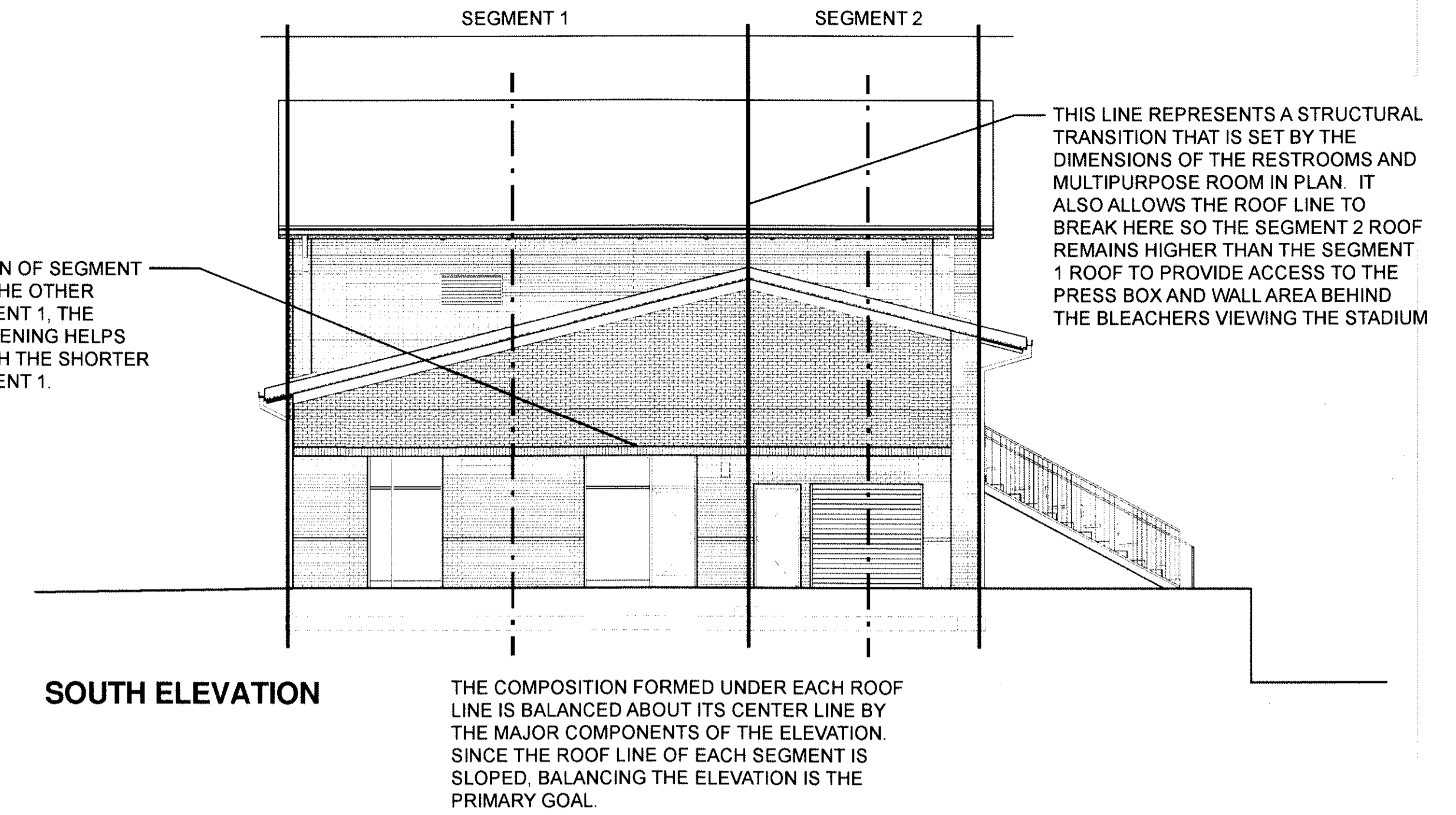


SINCE THIS PORTION OF SEGMENT 1 IS TALLER THAN THE OTHER PORTION OF SEGMENT 1, THE WIDER WINDOW OPENING HELPS TO BALANCE IT WITH THE SHORTER PORTION OF SEGMENT 1.



COMPOSITION OVERLAY

BOTH THE EAST AND WEST ELEVATIONS ARE SYMMETRICAL IN VOLUME AND DIMENSIONS ABOUT THE CENTERLINE OF THE TALL, CENTER PORTION OF THE BUILDING. SEGMENTS DEFINED BY ROOF LINES ARE ALSO BALANCED WITHIN THEMSELVES.

14-SP-013
 HTE#: N/A
 Approved by the Town of Cary
 Development Review Committee
 Planner K.H.H. Date 8/19/2014