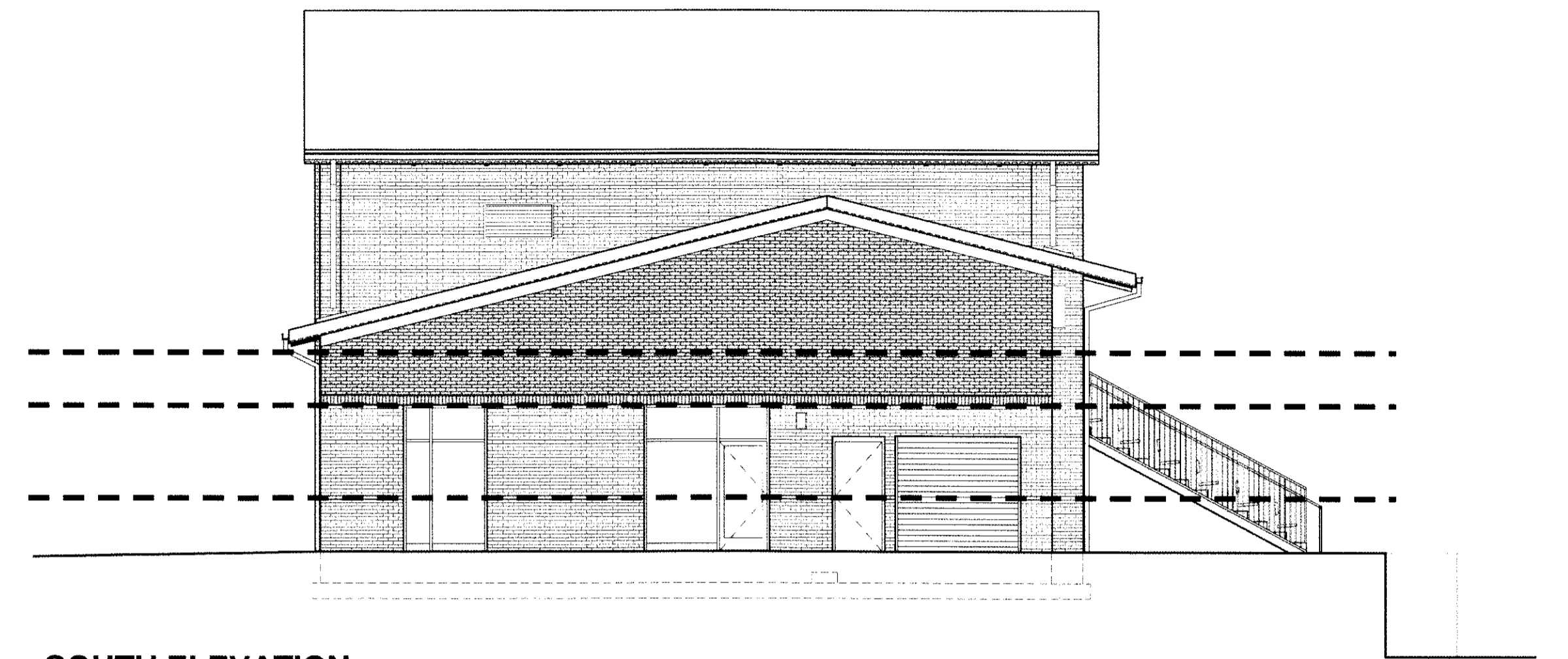
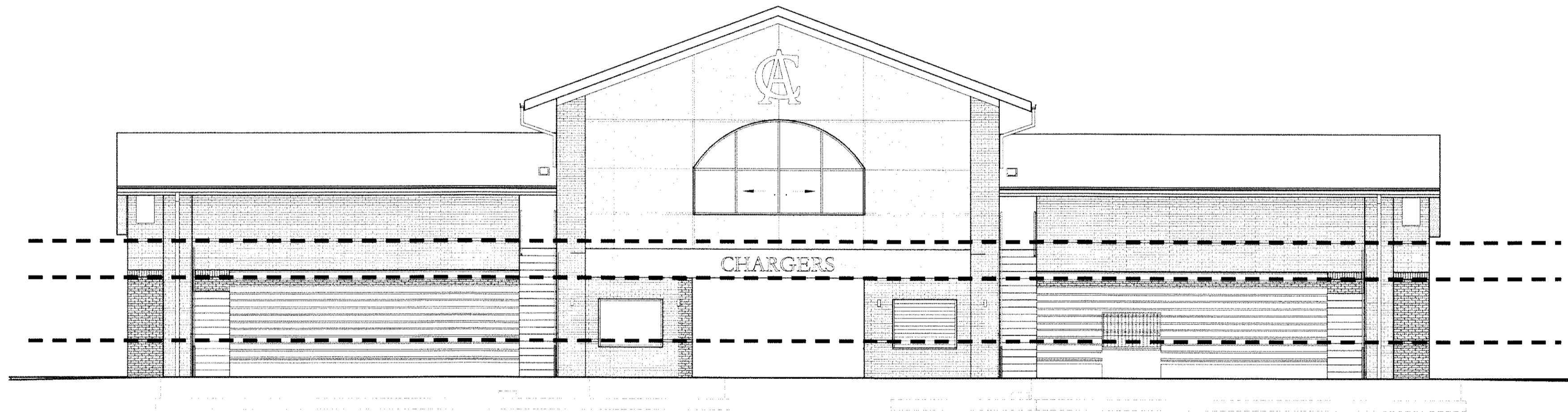


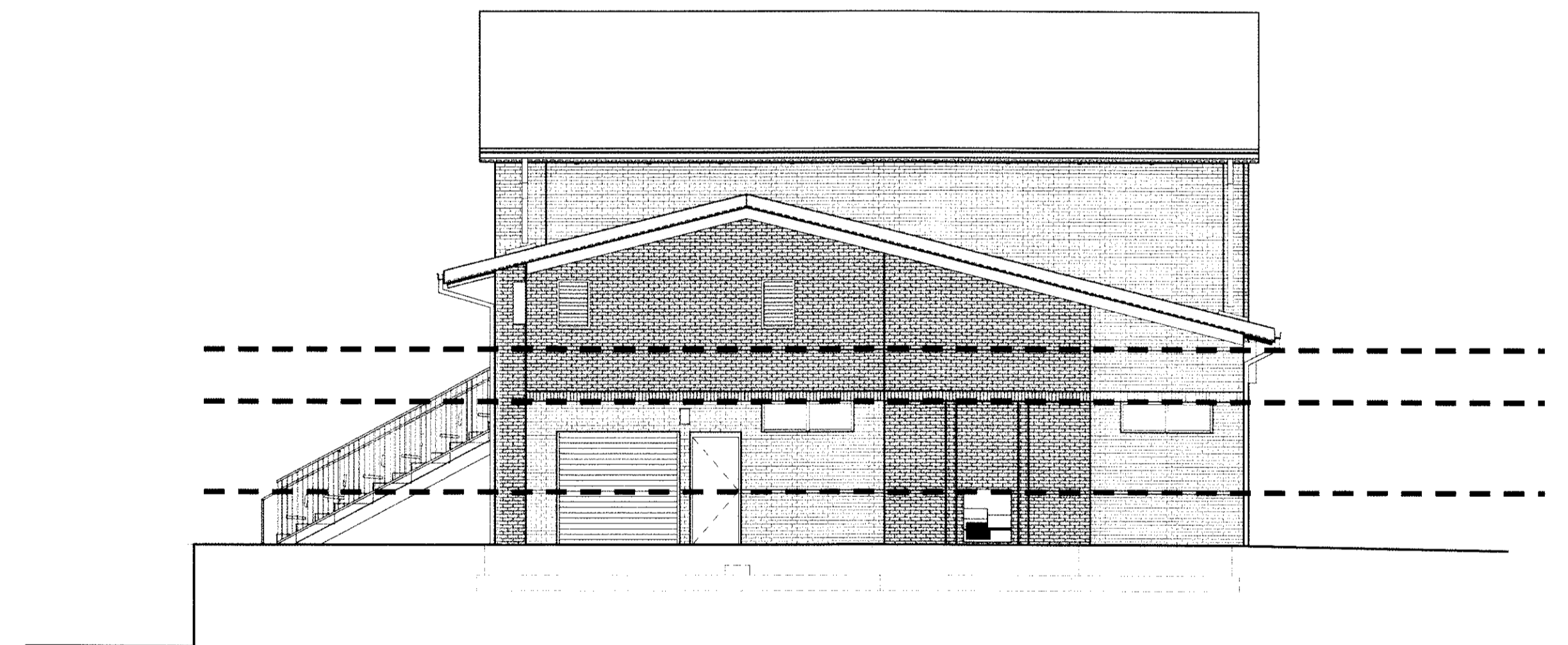
WEST ELEVATION



SOUTH ELEVATION



EAST ELEVATION



NORTH ELEVATION

## RHYTHM OVERLAY

THE FIELD HOUSE IS A SMALL STRUCTURE, CONSISTING MAINLY OF RESTROOMS AND STORAGE SPACE NEEDED TO SERVE THE ATHLETIC DEPARTMENT AT CARY ACADEMY. AS SUCH, IT IS VERY UTILITARIAN IN DESIGN AND FUNCTION.

WHILE THIS BUILDING IS DESIGNED TO HARMONIZE WITH THE EXISTING BUILDING STYLE ON CAMPUS, IT CONSISTS OF SIMPLIFIED VERSIONS OF THE DETAIL ELEMENTS FOUND IN THE OTHER BUILDINGS. FOR EXAMPLE, THE BRICK DETAILING FOUND ON THE LARGER, MORE FORMAL BUILDINGS AROUND THE CAMPUS QUAD INFLUENCES THE SIMPLE BRICK SOLDIER COURSES AND INSET COURSES DETAILED IN THE FIELD HOUSE FACADE.

FUNCTIONALLY, THIS BUILDING IS ALSO SIMPLE. ELEMENTS LIKE WINDOWS AND DOORS ARE INTENTIONALLY LOCATED FOR THE INTERIOR SPACES THAT BENEFIT FROM THEM.

THE HORIZONTAL BRICK DATUM LINES THAT OCCUR ON EVERY FACADE OF THIS BUILDING HELP TO VISUALLY ORGANIZE ELEMENTS. FOR A BUILDING THIS SMALL, PROVIDING TOO MUCH REPETITION ON ANY ELEVATION WOULD INCREASE VISUAL CONFUSION. WHEN THE BUILDING IS VIEWED AS A SUM OF THE FACADES, AS IT WILL BE SEEN IN 3 DIMENSIONS, THE RHYTHM OF THE HORIZONTAL DATUM LINES AND SYMMETRY OF THE BUILDING WILL BE APPARENT.

14-SP-013  
HTE#: N/A

Approved by the Town of Cary  
Development Review Committee

Planner K.H.H. Date 8/19/2014

3/28/2014 8:34:31 AM 130041000