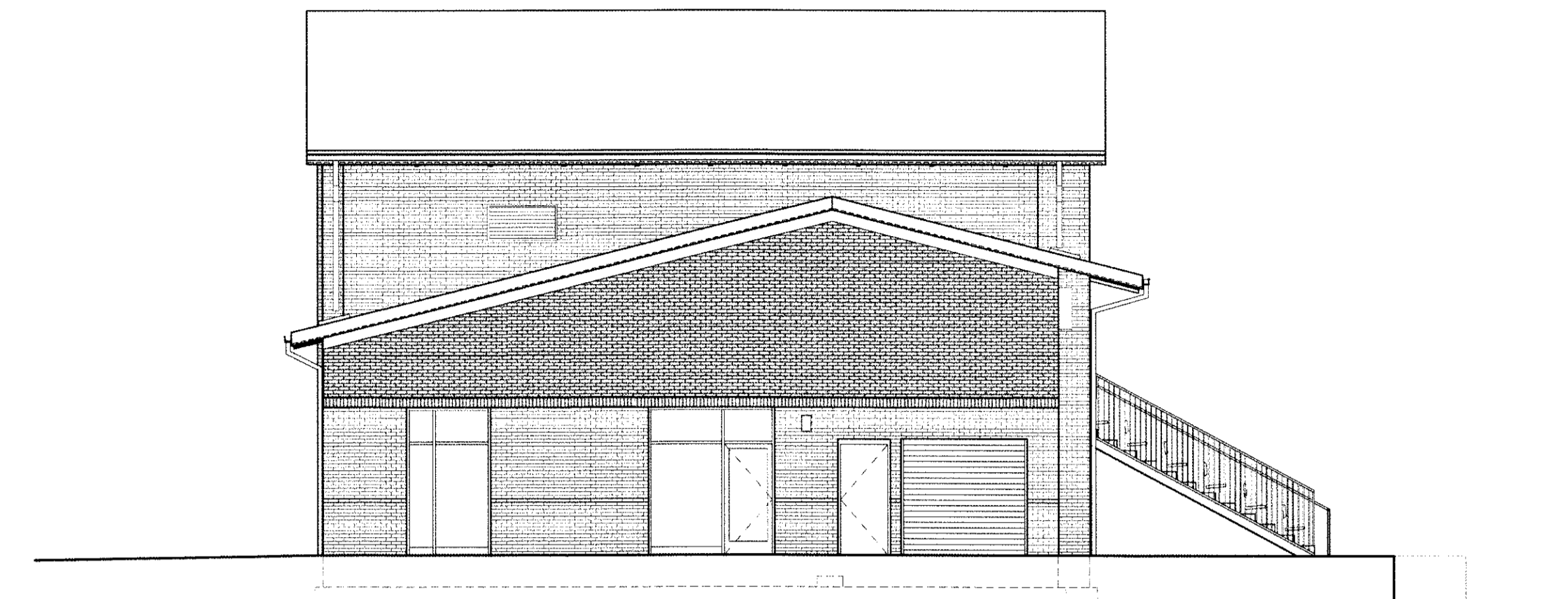


WEST ELEVATION

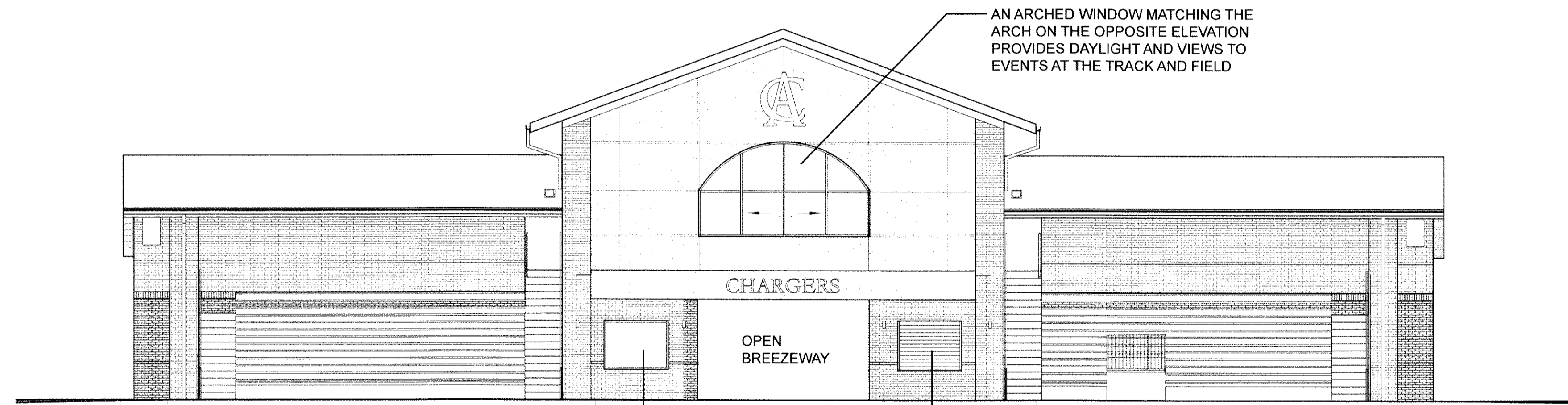
NO WINDOWS DESIRED AT RESTROOMS AND CHANGING ROOMS

IN THE MULTI-PURPOSE ROOM, THE ONLY ASSEMBLY SPACE IN THE BUILDING, WINDOWS PROVIDE DAYLIGHT AND VIEWS.



SOUTH ELEVATION

IN THE MULTI-PURPOSE ROOM, THE ONLY ASSEMBLY SPACE IN THE BUILDING, WINDOWS PROVIDE DAYLIGHT AND VIEWS.

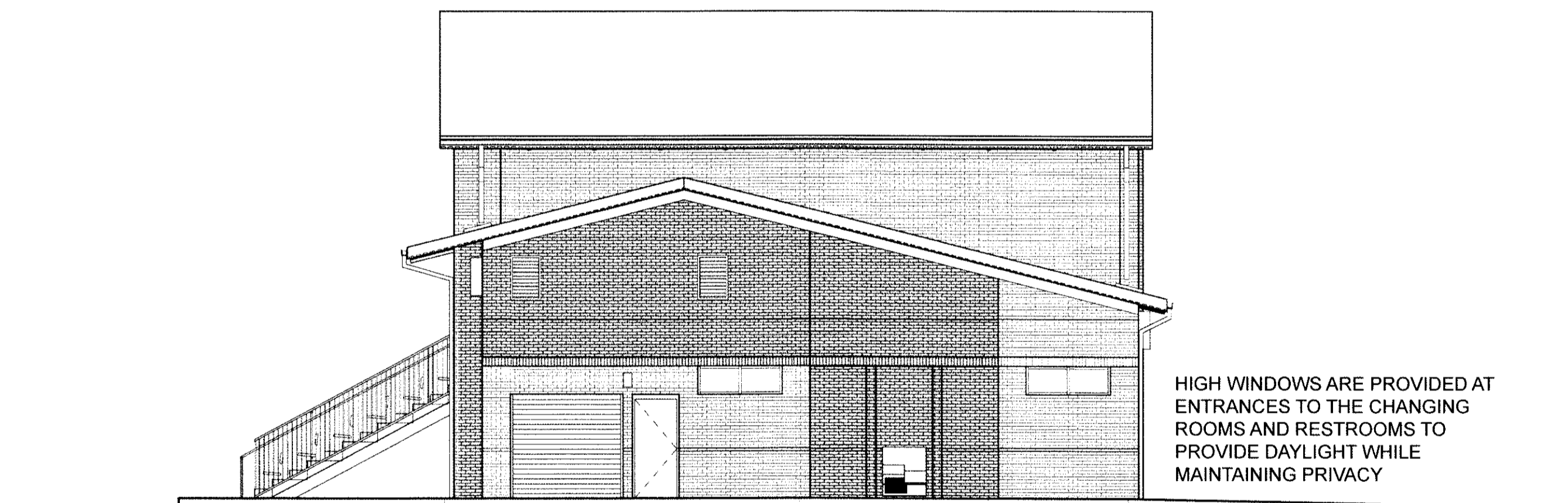


EAST ELEVATION

A WINDOW IS PROVIDED AT THE COACHES' OFFICE FOR SUPERVISION OF THE EVENT AND FIELD HOUSE AREA

COUNTER SHUTTERS ALLOW CONCESSIONS TO OPEN TOWARD THE FIELD DURING EVENTS

AN ARCHED WINDOW MATCHING THE ARCH ON THE OPPOSITE ELEVATION PROVIDES DAYLIGHT AND VIEWS TO EVENTS AT THE TRACK AND FIELD



NORTH ELEVATION

HIGH WINDOWS ARE PROVIDED AT ENTRANCES TO THE CHANGING ROOMS AND RESTROOMS TO PROVIDE DAYLIGHT WHILE MAINTAINING PRIVACY

TRANSPARENCY OVERLAY

THE LOCATION OF OPENINGS ON THE FIELD HOUSE FACADES IS DRIVEN BY THE FUNCTION OF THE INTERIOR SPACES AND WHETHER OR NOT THOSE SPACES NEED OPENINGS.

UNOCCUPIED SPACES SUCH AS STORAGE THAT DO NOT NEED VISUAL INTERACTION BETWEEN THE INTERIOR AND THE EXTERIOR DO NOT HAVE WINDOWS. WINDOWS ARE PROVIDED TO OCCUPIED SPACES TO PROVIDE DAYLIGHT AND VIEWS BASED ON THE USE OF THE INTERIOR SPACE. WHERE VIEWS TO THE SIDEWALK ARE NOT PREFERRED, LIKE CHANGING ROOMS AND RESTROOMS, WINDOWS ARE LOCATED HIGH ON THE WALL TO PROVIDE DAYLIGHT AND SKY VIEWS.

THE TRANSPARENCY PRINCIPLE DESCRIBED IN THE COMMUNITY APPEARANCE MANUAL REFERS MAINLY TO COMMERCIAL BUILDINGS. THE FIELD HOUSE IS CENTRALLY LOCATED ON CARY ACADEMY'S CAMPUS, NOT FRONTING A PRIMARY STREET, AND IT IS NOT A COMMERCIAL STRUCTURE.

14-SP-013
HTE#: N/A

Approved by the Town of Cary
Development Review Committee

Planner K.Hel Date 8/19/2014

3/26/2014 8:34:37 AM 13004.000