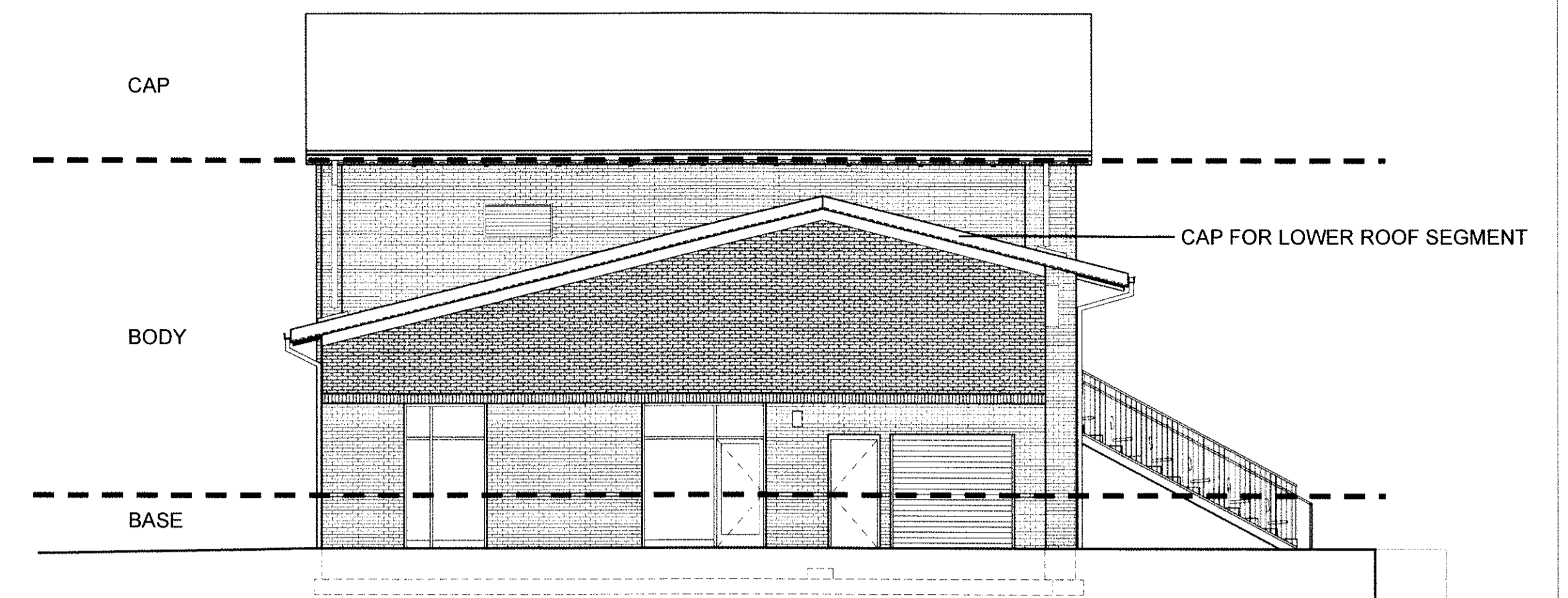
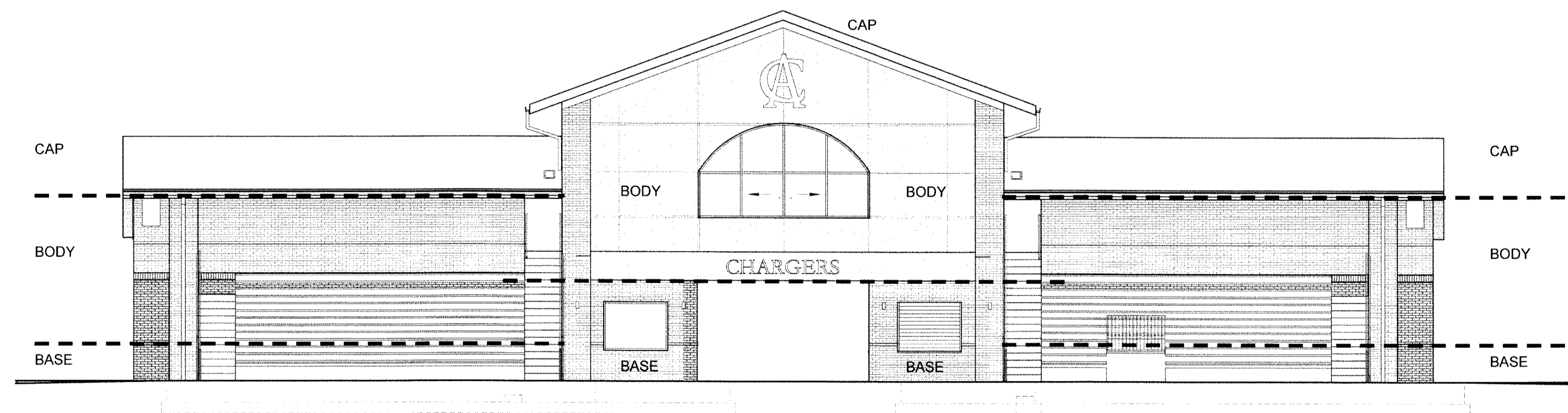


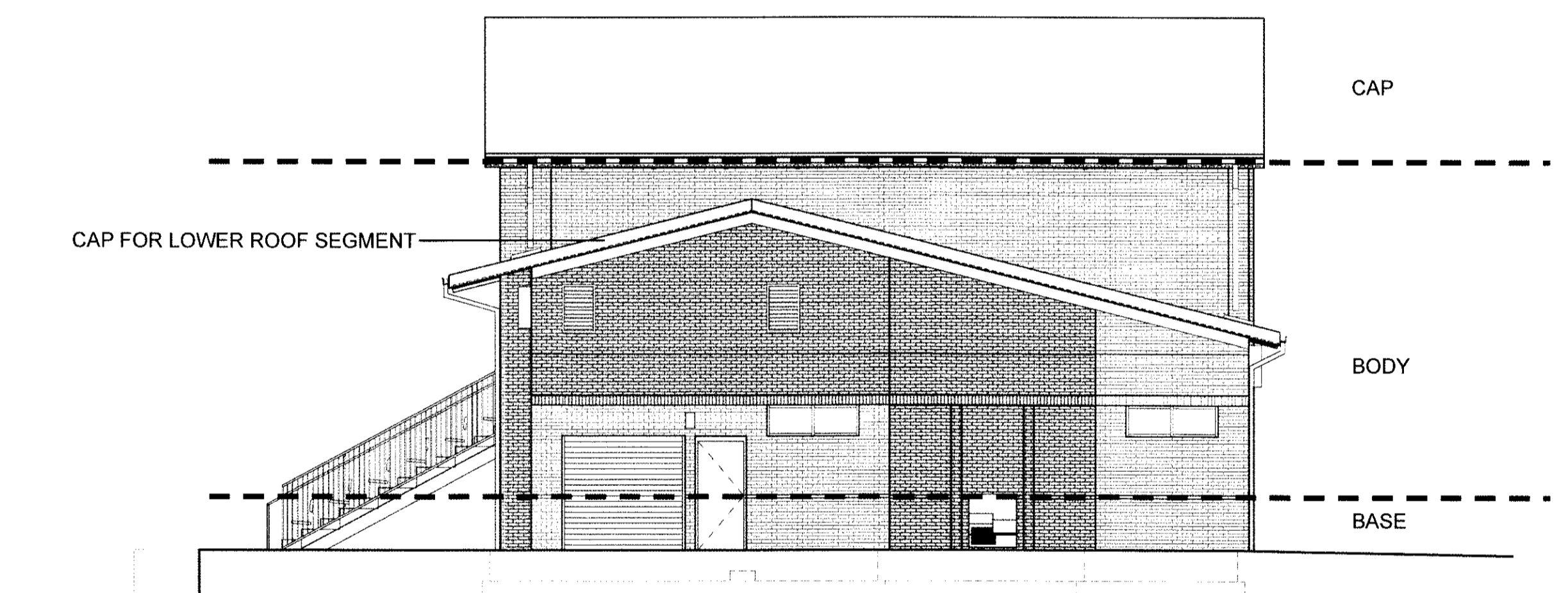
WEST ELEVATION



SOUTH ELEVATION



EAST ELEVATION



NORTH ELEVATION

ARTICULATION OVERLAY

THE BASE OF THE FIELD HOUSE BUILDING IS DELINEATED BY AN INSET BRICK COURSE CREATING A SHADOW LINE REVEAL. THIS OCCURS 3'-4" ABOVE THE SIDEWALK.

THE BODY OF THE FIELD HOUSE IS DEFINED AS EVERYTHING ABOVE THE BASE LINE AND BELOW THE ROOF PLANE.

THE ROOFS OF THE FIELD HOUSE CAP THE BASE AND BODY OF EACH BUILDING SEGMENT.

14-SP-013
HTE#: N/A

Approved by the Town of Cary
Development Review Committee

Planner K. Allen Date 8/19/2014