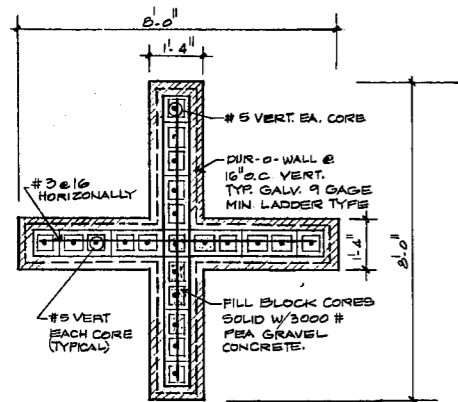
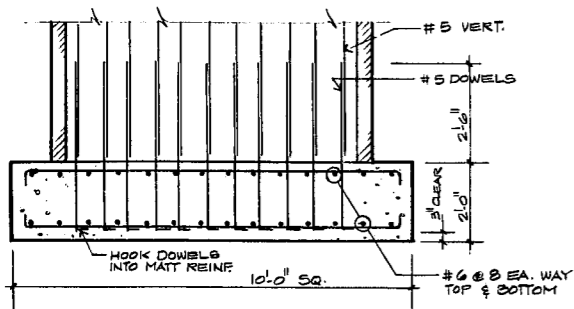


FOOTING SCHEDULE		CARY ALLIANCE CHURCH		JULY 19, 1991	
MARK	SIZE (D X W X H)	REINFORCING	HAIRPIN	ANCHOR BOLTS	DETAILS
A	1'-0" X 1'-8" X CONT.	3 - #4 CONT.	-	-	
B	1'-0" X 2'-0" X CONT.	3 - #4 CONT.	-	-	
C	1'-0" X 2'-6" X CONT.	4 - #4 CONT.	-	-	
D	0'-10" X 2'-0" X CONT.	3 - #4 CONT.	-	-	
E	1'-2" X 5'-0" X 5'-0"	6 - #5 EACH WAY	2 - #5 X 15' LONG	SIZE BY ARCH MFR.	403
F	2'-0" X 10'-0" X 10'-0"	15 - #6 EACH WAY TOP & BOTTOM			102

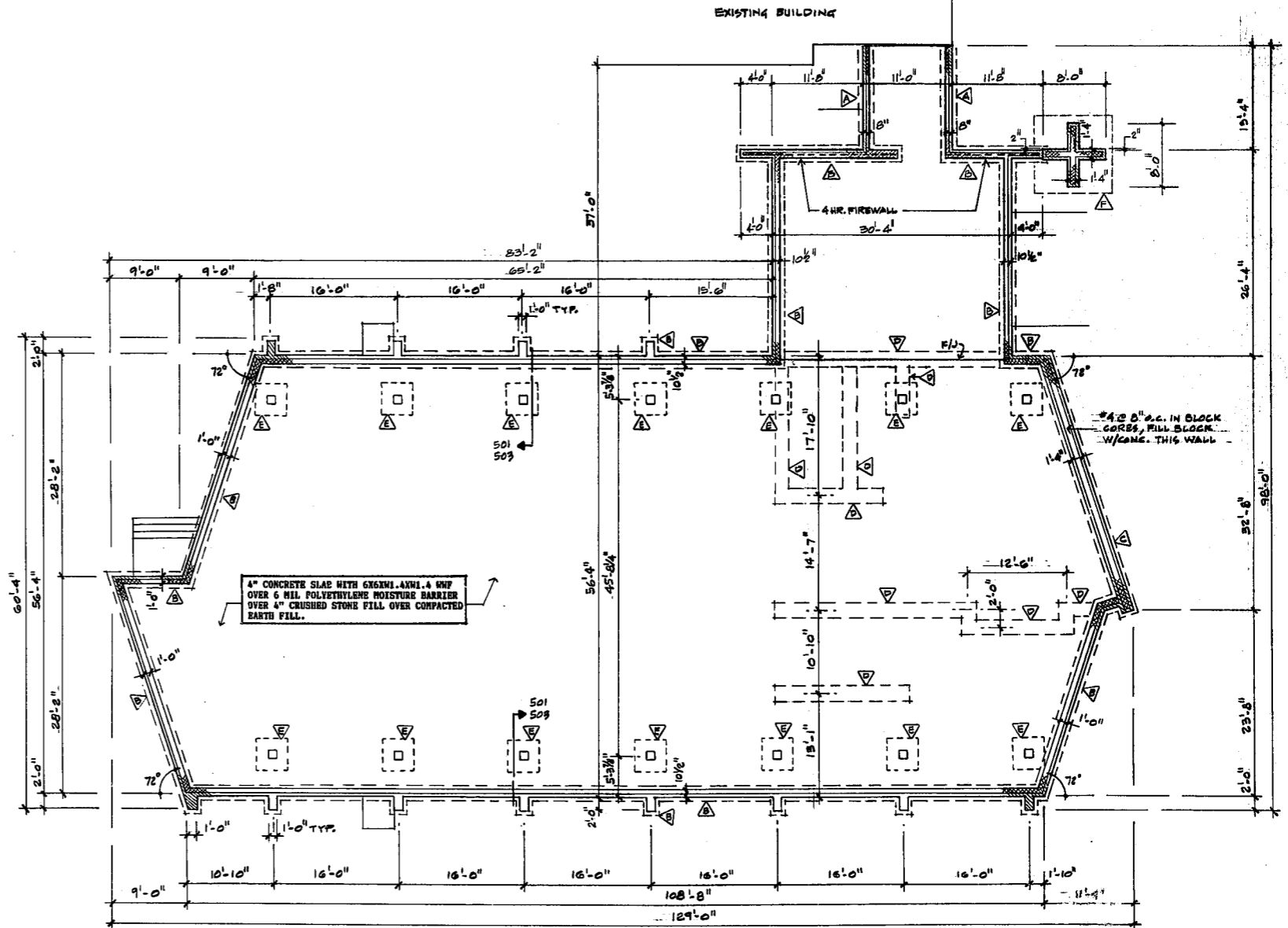
NOTE: ASSUMED SOIL BEARING PRESSURE = 2000 PSF



103
PLAN VIEW OF TOWER



102
SECTION THRU TOWER FOOTING



FOUNDATION PLAN 1/8" = 1'-0"
101

CARY ALLIANCE CHURCH
655 WEST MAYNARD ROAD
CARY, NORTH CAROLINA

