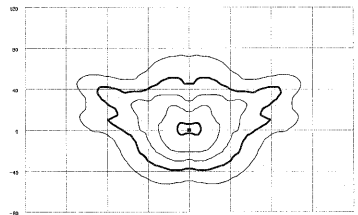


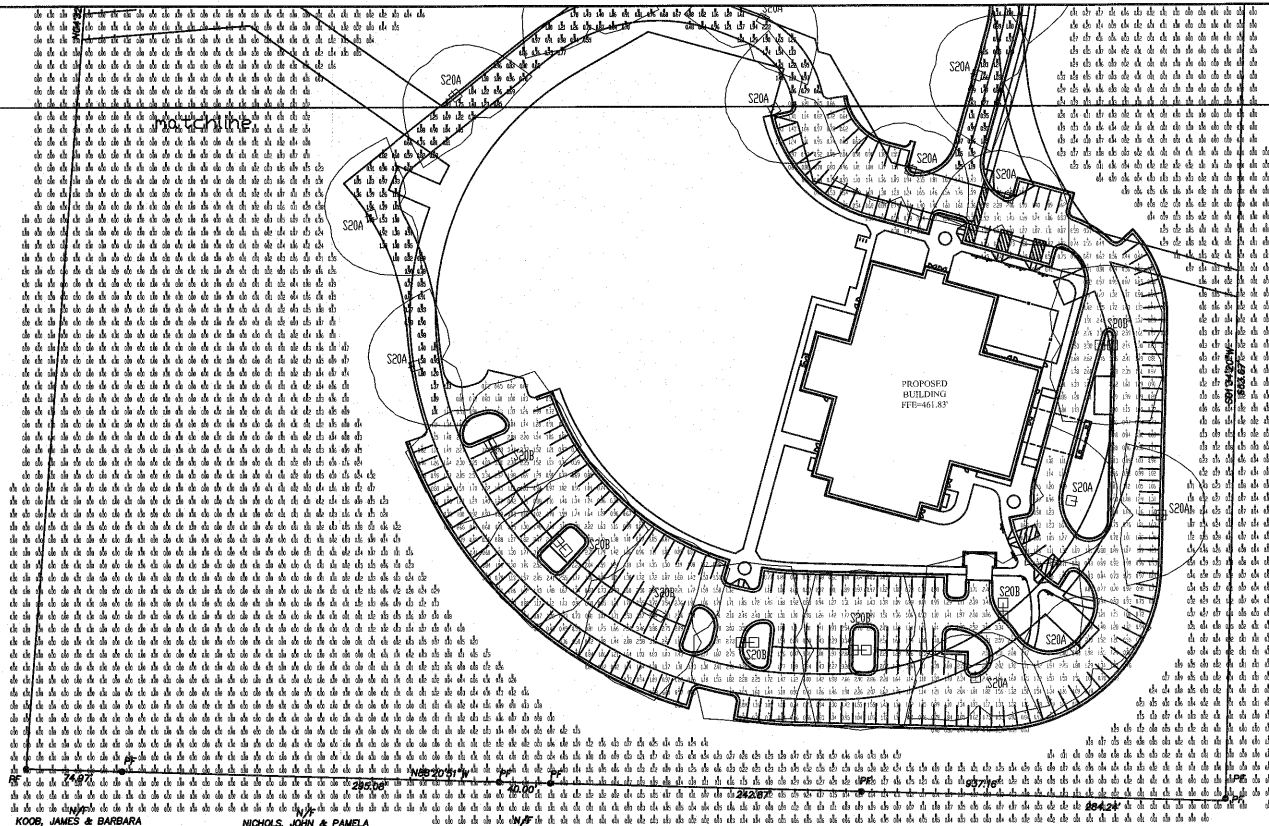
ISOFOOTCANDLE CURVES

FIXTURE: SHOEBOX
 MOUNTING HEIGHT: 30 FT
 LAMP: 250V, 2000 LUMENS, METAL HALIDE
 PATTERN: TYPE III, FULL CUTOFF
 ASSY # L200-SLK-SSE-08LACIO

NOTE: THE FOOTCANDLE READINGS BELOW ARE MAINTAINED AND HAVE BEEN DEPRECATED FOR LAMP LUMEN DEGRADATION AND LUMINOUS DEEP DEGRADATION FOR INITIAL FOOTCANDLES. DIVIDE THE READINGS BELOW BY 54.



LEGEND: OUTER to INNER: 0.100, 0.250, 0.500, 1.00, 2.00



KOOB, JAMES & BARBARA
 NICHOLS, JOHN & PAMELA

CALCULATION SUMMARY		UNITS	DATE	BY	CHKD	GROUP	APP	DATE	REV	DESCRIPTION
Area	995.00	SQ FT	03/30/2007	JTB	JTB	02	03/30/2007	01		Initial Design
Perimeter	823.4	LINEAL FT								

TYPE	DESCRIPTION	QUANTITY	LUMENS	FOOTCANDLES	EFF.	REV
S20A	2000 Lumen Shoebox Fixture	2	2000	30' x 30'	0.64	05
S20B	2000 Lumen Shoebox Fixture	2	2000	30' x 30'	0.64	07

07-SP-015
APPROVED
 TOWN OF CARY

Approved by: JRC Date: 04/23/07
 Planning: JTB Date: 05/18/07
 Engineering: TS Date: 05/21/07

CARY ALLIANCE CHURCH

CARY, NC
 SITE LIGHTING PLAN
 Designed by: PGN LIGHTING SOLUTIONS - CAROLINAS
 Reviewed by: B. Stimpkins Scale: 1" = 50'
 Date: 03/30/2007 Size: Drawing size "D"
 Description: 20K lumen Shoebox fixtures
 Drawing No.: 06-0263B Sht.: C10.02

LIGHTING DESIGN TOLERANCE
 The calculated footcandle light levels in this lighting design are predicted values and are based on specific information that has been supplied to Progress Energy. Any inaccuracies in the supplied information, differences in luminaire installation, lighted surfaces, obstructions (large or otherwise) in the lighted area, or lighting from sources other than listed in this design may produce different results from the predicted values. Normal tolerances of voltage, lamp output, and ballast and luminaire manufacture will also affect results.

Customer approval _____ Date _____



PROPRIETARY & CONFIDENTIAL
 This document together with the concepts and designs contained therein, presented or an instrument of service, is the sole property of Progress Energy, and is intended only for the specific purpose and project stated in the title block of this drawing. Any use, copying, reproduction or disclosure of this drawing, design or any information contained herein by the prospective customer or other entities, including without limitation, architects, engineers, or equipment manufacturers is hereby expressly prohibited and shall not be permitted absent prior written consent from, and payment of compensation to Progress Energy. Progress Energy disclaims any liability or responsibility for any unauthorized use of or reliance on this document.