

REVISIONS

DATE	COMMENTS

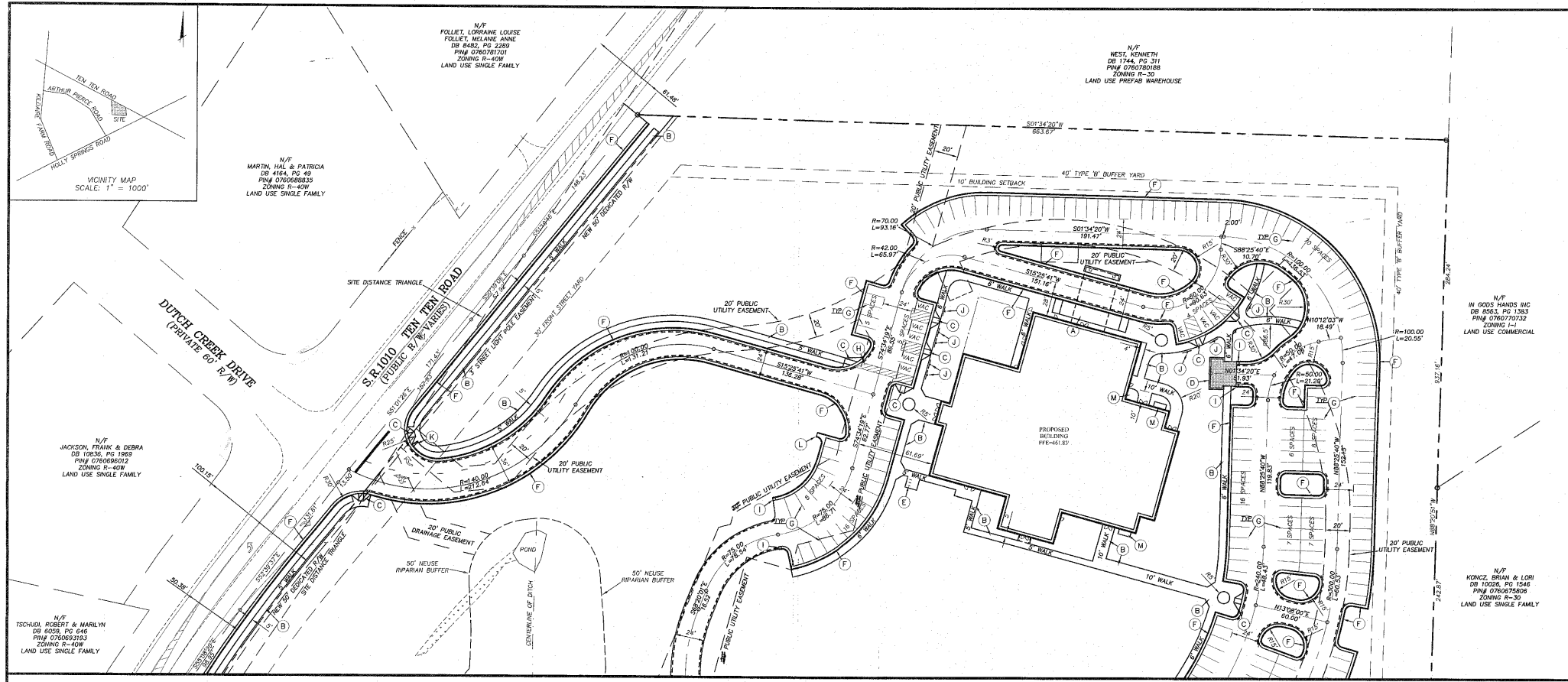
CONSTRUCTION DOCUMENT

CARY ALLIANCE CHURCH
4108 TEN TEN ROAD
CARY, NORTH CAROLINA

REVIEWED BY: JRL
 DESIGNED BY: LJS
 DRAWN BY: JRL
 DATE: 08-23-07
 PROJECT NUMBER: 07-SP-015

SITE LAYOUT PLAN
C3.01

SHEET 4 OF 27
 FEBRUARY 2007



MATCHLINE SEE SHEET C3.02

- KEY NOTES**
- (A) PASSENGER UNLOADING ZONE, SEE DETAIL SHEET C9.01.
 - (B) CONCRETE SIDEWALK, SEE DETAIL SHEET C9.01.
 - (C) ACCESSIBLE CURB RAMP, SEE DETAIL SHEET C9.01.
 - (D) DUMPSTER ENCLOSURE, SEE DETAIL SHEET C9.01.
 - (E) BICYCLE RACKS, SEE DETAIL SHEET C9.01.
 - (F) 30" CURB & GUTTER, SEE DETAIL SHEET C9.01.
 - (G) PARKING SPACE STRIPING, SEE TRAFFIC CONTROL NOTES THIS SHEET.
 - (H) CROSSWALK, SEE TRAFFIC CONTROL NOTES THIS SHEET.
 - (I) STANDARD METHOD OF ENDING CURB & GUTTER, SEE DETAIL SHEET C9.01.
 - (J) ACCESSIBLE PARKING & SIGNAGE, SEE DETAIL SHEET C9.01 AND TRAFFIC CONTROL NOTES THIS SHEET.
 - (K) STOP SIGN, SEE TRAFFIC CONTROL NOTES THIS SHEET.
 - (L) CONCRETE FULM, SEE DETAIL SHEET C9.02.
 - (M) HVAC UNIT LOCATION, SEE ARCHITECTURE AND PLUMBING PLANS.
- CONCRETE PAVEMENT, SEE DETAIL SHEET C9.01.
 ASPHALT PAVEMENT, SEE DETAIL SHEET C9.01.
 FIRE LANE MARKING, SEE TRAFFIC CONTROL NOTES THIS SHEET.
 DELINEATED WETLANDS

- GENERAL NOTES**
- ALL DIMENSIONS SHOWN ARE TO FACE OF CURB AND FACE OF BUILDING WALL, UNLESS OTHERWISE INDICATED.
 - CONTRACTOR SHALL FIELD VERIFY ALL DIMENSIONS INDICATED AND NOTIFY ARCHITECT OF ANY DISCREPANCIES.
 - CONSTRUCTION STAKE OUT IS THE RESPONSIBILITY OF THE CONTRACTOR.
 - ALL PAVEMENT MARKINGS AND SIGNAGE SHALL BE INSTALLED IN ACCORDANCE WITH THE LATEST MANUAL OF "UNIFORM TRAFFIC CONTROL DEVICES."
 - ALL FACE OF CURB RADI ARE 5 FT UNLESS OTHERWISE SHOWN.
 - ALL PARKING SPACES SHALL BE 9' WIDE X 16' DEEP MIN.
 - VAC - VAN ACCESSIBLE PARKING SPACE.
 - ALL CONSTRUCTION SHALL BE PERFORMED IN ACCORDANCE WITH CURRENT TOWN OF CARY STANDARD SPECIFICATIONS AND DETAILS.

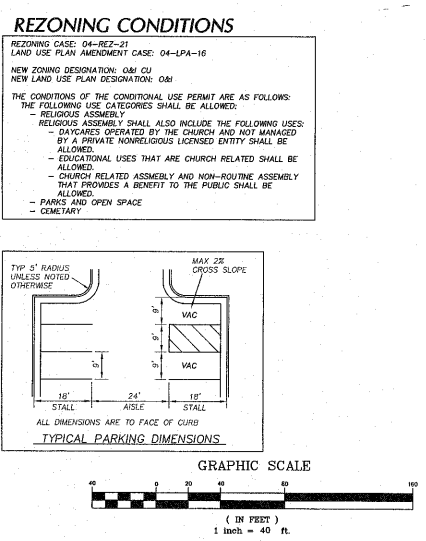
- TRAFFIC CONTROL NOTES**
- ALL SITE SIGNAGE SHALL BE IN ACCORDANCE WITH THE MANUAL ON UNIFORM TRAFFIC CONTROL DEVICES (MUTCD) AND NCDOT STANDARDS.

SIGN	MUTCD STD.	SIZE	COLOR
STOP	R1-1	24" x 24"	WHIT.
ACCESSIBLE PARKING	R7-1	12" x 18"	WHIT.
 - ALL SIGNS SHALL BE MOUNTED WITH 5'-FT MIN. VERTICAL CLEARANCE TO THE BOTTOM OF THE SIGN ON 2-LB. GALV. STEEL U-CHEMICAL POST SET IN 18-IN DEEP x 8-IN DIA. CONCRETE FOOTING. SIGNS MOUNTED ADJACENT TO SIDEWALKS MUST BE MOUNTED WITH 7'-FT MIN. VERTICAL CLEARANCE TO THE BOTTOM OF SIGN.
 - ALL PAVEMENT MARKINGS SHALL BE IN ACCORDANCE WITH THE MUTCD AND NCDOT STANDARDS AND THE PROJECT SPECIFICATIONS.

MARKING	MUTCD STD.	SIZE	COLOR
PARKING SPACES	4-N	4"-N	WHIT.
CROSSWALK	1205.07(H-VS)	24"-N	WHIT.
NO PARKING - FIRE LANE *	4-N	4"-N	RED.

* NO PARKING - FIRE LANE MARKING SHALL CONSIST OF A 4" SOLID YELLOW STRIKE AND 8" HIGH YELLOW TEXT "NO PARKING - FIRE LANE" AT 10' INTERVALS.
 - ALL PAVEMENT MARKINGS SHALL BE THERMOPLASTIC TYPE OR ALKYD-RESIN TYPE PAINT.

- TOWN OF CARY GENERAL NOTES**
- THE SITE SHALL BE STABILIZED AND SEEDDED PRIOR TO THE ISSUANCE OF A CERTIFICATE OF OCCUPANCY.
 - ALL HVAC SYSTEMS SHALL BE SCREENED FROM OFF-SITE VIEWS.
 - ALL DUMPSTER AND CARDBOARD RECYCLING LOCATIONS SHALL BE SCREENED FROM OFF-SITE VIEWS.
 - WHERE EXISTING VEGETATION FAILS TO FUNCTION ADEQUATELY AS REQUIRED, (I.E. BUFFER TYPE A, B, C, AND 100' THROUGHFARE CORRIDOR BUFFER) THE CARY SITE INSPECTOR RESERVES THE RIGHT TO REQUIRE SUPPLEMENTAL PLANTINGS IN ADDITION TO THOSE SHOWN ON THE PLANTING PLAN BASED ON ACTUAL FIELD CONDITIONS.
 - ALL EXTERIOR SITE LIGHTING SHALL BE DESIGNED TO PREVENT OFF-SITE GLARE.
 - ALL VEHICULAR USE AREAS (DRIVES AND PARKING AREAS) SHALL BE SCREENED FROM OFF-SITE VIEWS.
 - NO TREE SHALL BE LOCATED WITHIN A ROADWAY RIGHT-OF-WAY OR WITHIN 5' OF A SIDEWALK.
 - NO CHANGES TO ANY ASPECT OF THIS SITE PLAN, INCLUDING BUT NOT LIMITED TO, LANDSCAPING, GRADING, BUILDING ELEVATIONS (ESPECIALLY COLORS), LIGHTING, OR UTILITIES WILL BE MADE WITHOUT THE APPROVAL OF THE DEVELOPMENT REVIEW GROUP OF THE DEPARTMENT OF PLANNING AND DEVELOPMENT.
 - AN UNDESIGNED DRIVEWAY MUST BE CLOSED IN ACCORDANCE WITH THE TOWN OF CARY'S DRIVEWAY ORDINANCE.
 - THE SIZE OF THE PLANTING AREA AND SIZE OF PLANT MATERIAL AT MATURITY SHALL ALLOW FOR A 2.5'-FT SWEEP OVERHANG FROM THE BACK OF CURB.
 - ALL TREE PROTECTION FENCING SHALL BE MAINTAINED UNTIL ALL SITE WORK IS COMPLETED. THE FENCING SHALL BE REMOVED PRIOR TO THE FINAL SITE INSPECTION FOR THE CERTIFICATE OF OCCUPANCY (CO).
 - ALL CONSTRUCTION SHALL BE PERFORMED IN ACCORDANCE WITH CURRENT TOWN OF CARY STANDARD SPECIFICATIONS AND DETAILS.
 - ALL ABOVE GROUND UTILITY EQUIPMENT AND FACILITIES ASSOCIATED WITH ON-SITE ELECTRIC, CABLE, TELEPHONE, GAS OR OTHER SIMILAR UTILITY SHALL BE LOCATED IN THE SIDE OF REAR YARD AREA OF THE SITE AND SCREENED TO THE EXTENT POSSIBLE, WITH EVERGREEN PLANTINGS. PLANTINGS SHALL ALLOW FOR A MINIMUM OF A 5' CLEARANCE AROUND THE STRUCTURE TO ALLOW FOR ACCESS. ADDITIONALLY, ANY SIDE OF THE STRUCTURE HAVING A DOOR OR LOCK, THE PLANTINGS SHALL ALLOW FOR A 10' CLEARANCE. THE AMOUNT OF CLEARANCE SHALL ACCOUNT FOR THE SIZE OF THE PLANT MATERIAL AT MATURITY.
 - ALL VENT PIPES, ETC. EXTENDING ABOVE THE ROOF SURFACE MUST BE PAINTED A COLOR THAT BLENDS WITH THE ROOF COLOR.
 - ALL WORK MUST COMPLY WITH NORTH CAROLINA STATE BUILDING AND HANDICAPPED ACCESSIBILITY CODE VOL. 1C.
 - APPROVED, STAMPED AND SIGNED BUILDING ELEVATIONS FROM THIS SITE PLAN MUST BE INCORPORATED IN THE BUILDING PERMIT PLANS.
 - THE DEVELOPER MUST BE RESPONSIBLE FOR ALL INSTALLATION COSTS ASSOCIATED WITH STREET LIGHTING ALONG PROPOSED STREETS, ADJACENT STREETS AND THROUGHFARES AS REQUIRED PER TOWN OF CARY POLICY STATEMENT NO. 13. THE DEVELOPER SHALL CONTACT PROCESS ENGINEER AFTER PLAN APPROVAL AND PRIOR TO CONSTRUCTION IN ORDER TO DEVELOP A STREET LIGHTING PLAN FOR THE SITE/SUBDIVISION PLANS.



SITE DISTANCE CALCULATIONS

$$ISD = 1.47 \sqrt{V(mph) \times l(g)}$$

$V(mph) = 45$
 $l(g) = 7.5e + 0.5e = 8.0e$
 $ISD = 1.47 \times 45 \times 8 = 529.7'$
 USE 530'

07-SP-015
APPROVED
TOWN OF CARY
 Approved by: DRC Date: 08-23-07
 Planning: JLB Date: 08-18-07
 Engineering: TS Date: 08-21-07