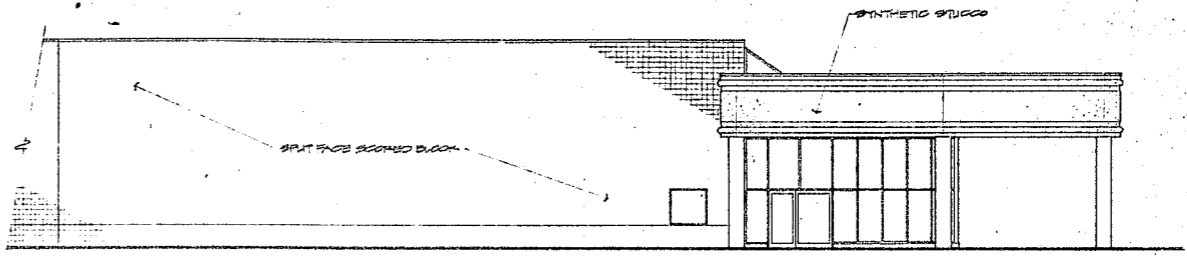
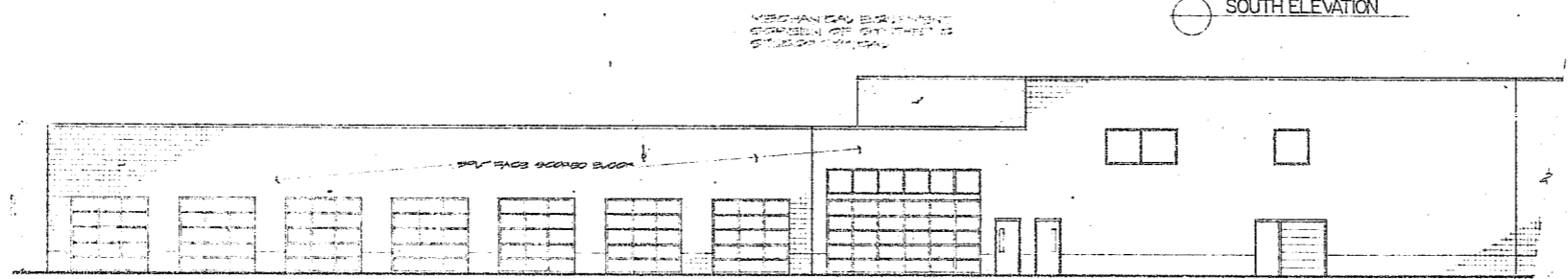


NORTHEAST ELEVATION

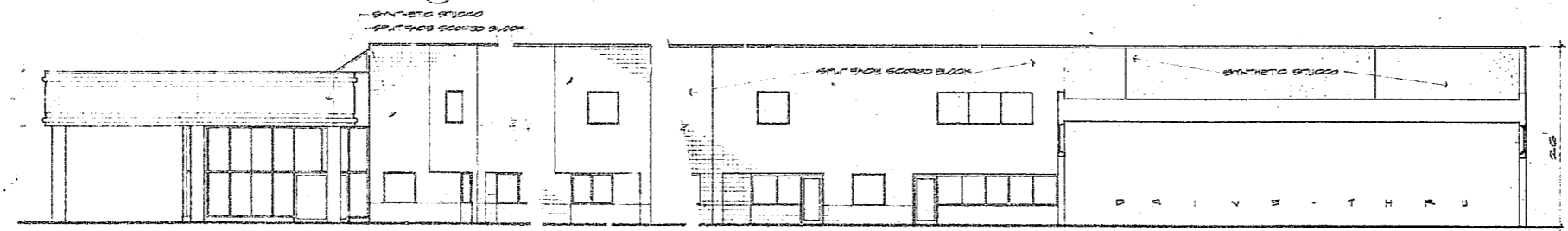
EAST ELEVATION



SOUTH ELEVATION



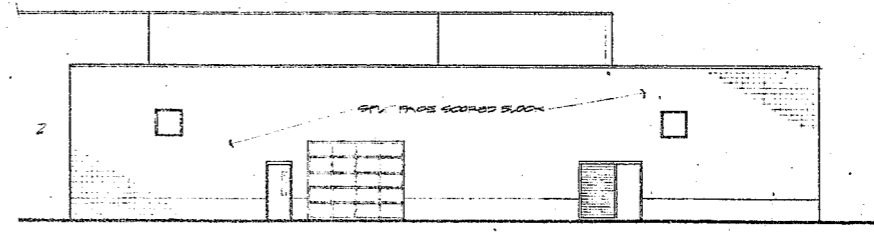
SOUTHWEST ELEVATION



NORTH ELEVATION

NORTHEAST ELEVATION

NORTHWEST SECTION/ELEVATION



NORTHWEST ELEVATION

NOTE:
 BLOCKING AND SPACING
 SHOULD BE AS APPLIED
 IN OTHER
 DRAWINGS OF RELATED WORK
 TO BE MAINTAINED ALIGNED

Franceschi Architects PA.
 1125 East Monrovia Street / Suite 202
 Charlotte, North Carolina 28204 / 704 / 333-6106

Project
CARY AUTO MALL
HENDRICK BUICK
 CARY, NORTH CAROLINA

Project Number 0990
 Date OCTOBER 24, 1989
 Revision NOV. 2, 1989

SCALE IN FEET

Sheet Description
ELEVATIONS
 SCALE: 1/8" = 1'-0"

Sheet Number 11 A3

Franceschi Architects PA. hereby warrants its copyright and other proprietary rights in these drawings, specifications, reports and other documents, and that it will defend and hold harmless the recipient of these drawings, specifications, reports and other documents from any third party claiming the drawings, specifications, reports and other documents are its own. This warranty shall not be construed to limit the recipient's right to use the drawings, specifications, reports and other documents for the project and location specified herein. The recipient shall indemnify and hold Franceschi Architects PA. harmless from and against all claims, damages, costs and expenses, including reasonable attorneys' fees, arising from the use of these drawings, specifications, reports and other documents for any purpose other than that specified herein.