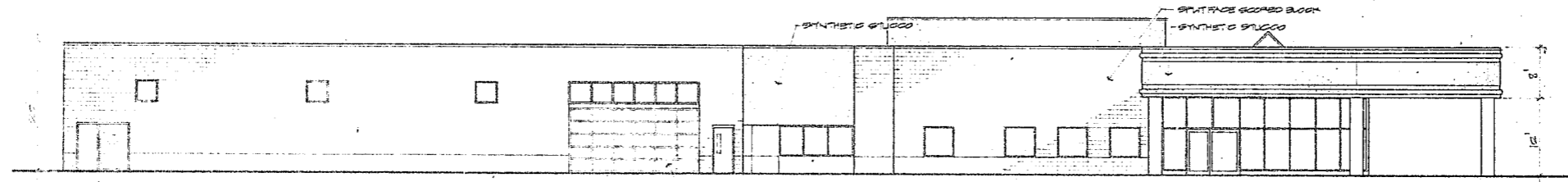
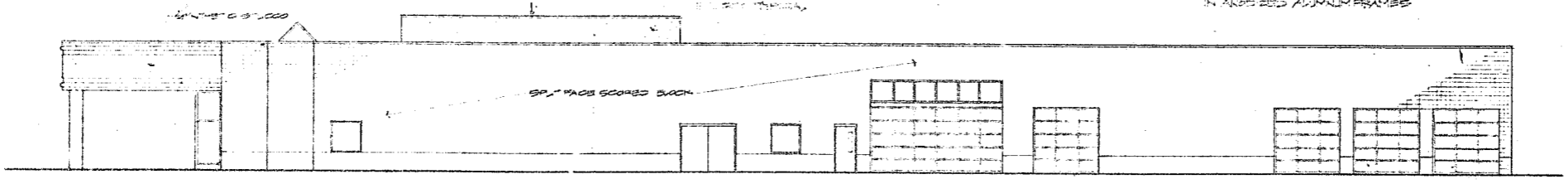


EAST ELEVATION

WEST ELEVATION



NORTH ELEVATION



SOUTH ELEVATION

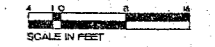
NOTES:
 1. SYNTHETIC STUCCO TO BE WHITE IN COLOR.
 2. ALL WINDOWS TO BE CLEAR GLASS IN ALUMINUM FRAMES.

Franceschi Architects PA.
 1125 East Morehead Street / Suite 202
 Charlotte, North Carolina 28204 / 704 / 333-6166

Project
CARY AUTO MALL
HENDRICK MAZDA

CARY, NORTH CAROLINA

Project Number: 8990
 Date: OCTOBER 24, 1989
 Revision: NO. 4 (R, 11/89)



Sheet Description
ELEVATIONS
 SCALE: 1/8" = 1'-0"

Sheet Number: 12 A2

Franceschi Architects PA. hereby warrants its drawings and designs and other property rights in these plans, designs and concepts. These drawings, designs and designs are not to be reproduced, copied or used in any form or manner whatsoever, nor are they to be loaned to any third party without the written consent of Franceschi Architects PA. Franceschi Architects PA. shall not be responsible for any errors or omissions in these drawings and designs and shall not be responsible for any construction or other work done in reliance on these drawings and designs. Franceschi Architects PA. shall be notified in writing of any such errors or omissions. Franceschi Architects PA. shall not be responsible for any construction or other work done in reliance on these drawings and designs.