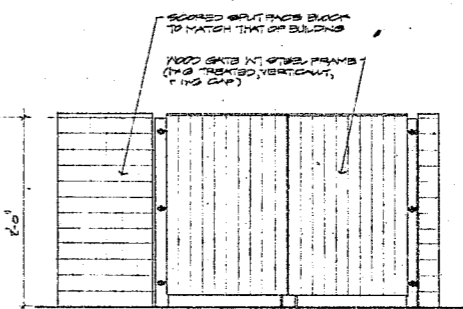
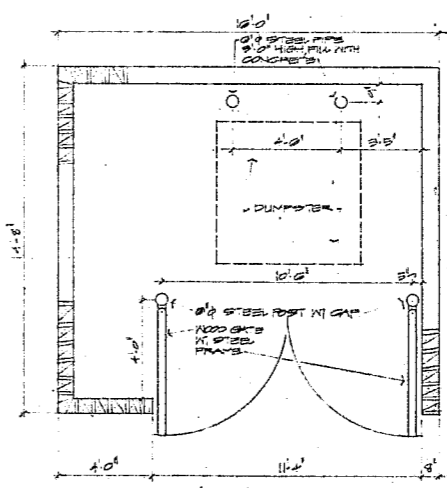


○ SIDE ELEVATION OF ENCLOSURE

NOTE: REAR ELEVATION SIMILAR



○ ELEVATION OF DUMPSTER ENCLOSURE



○ PLAN OF DUMPSTER ENCLOSURE

Franceschi Architects PA.
 1125 East Morehead Street / Suite 202
 Charlotte, North Carolina 28204 / 704 / 333-6186

Project
CARY AUTO MALL

CARY, NORTH CAROLINA
 Project Number: 6790
 Date: NOVEMBER 16, 1999
 Revisors:

Sheet Description
**ARCHITECTURAL
 SITE DETAILS**
 Sheet Number: 16

Franceschi Architects PA. hereby reserves its copyright and other intellectual property in these plans, specifications, drawings, designs and plans as well as to reproduce, publish or disseminate any part of these drawings, designs and plans without the express written permission of Franceschi Architects PA. Any reproduction or dissemination of these drawings, designs and plans without the express written permission of Franceschi Architects PA. shall be deemed to be an infringement of the copyright and other intellectual property rights of Franceschi Architects PA. and the user shall be liable for all damages and costs incurred by Franceschi Architects PA. in connection with any such infringement.