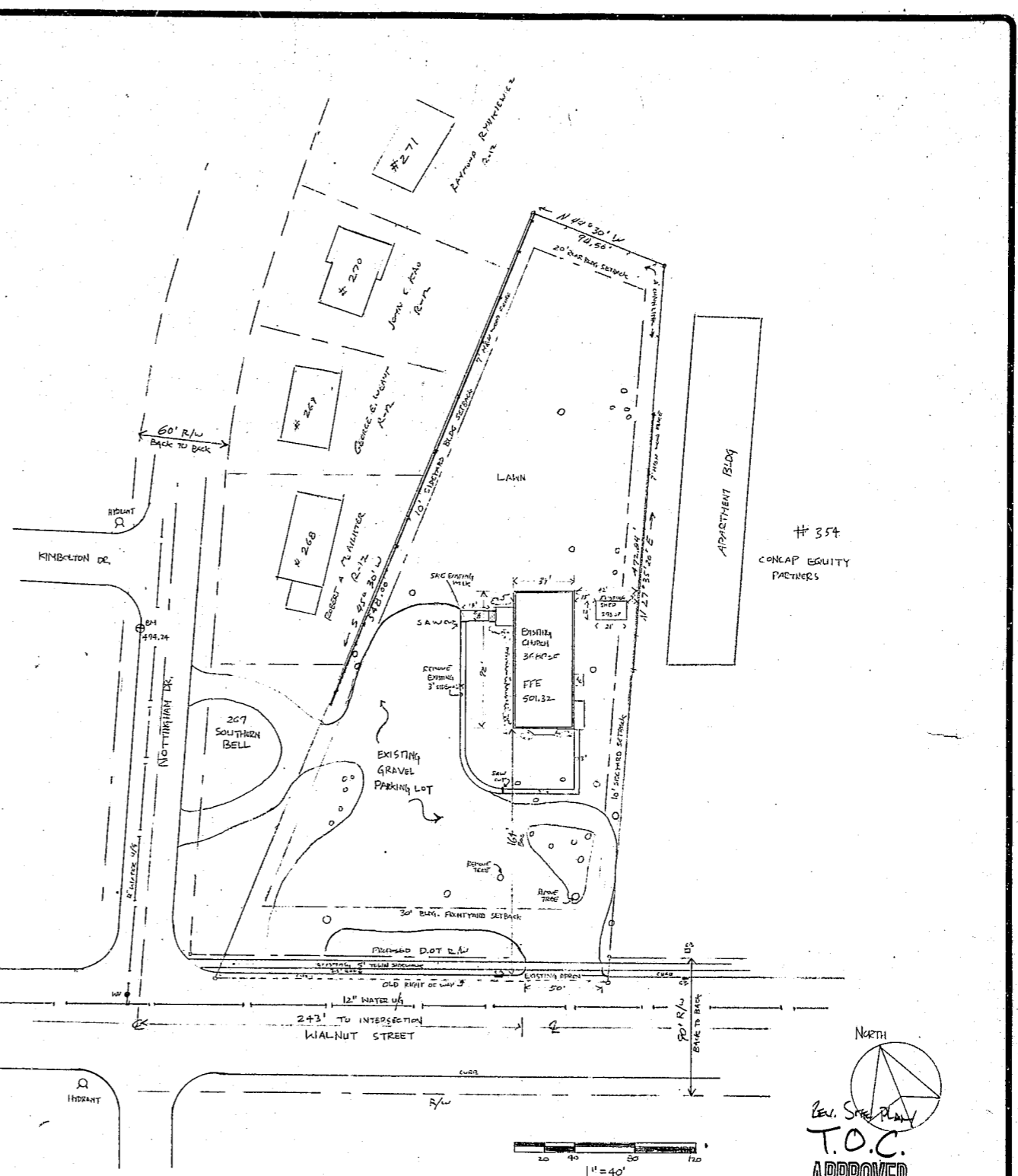


VACINITY MAP
1" = 500'



EXISTING SITE CONDITIONS

SITE DATA
 OWNER: CARY CHRISTIAN CHURCH 1503 WALNUT ST, CARY NC 27511
 ZONING: R-6 MAP 574 # 217
 AREA OF TRACT: 1.99 ACRES FINISHED FLOOR ELEVATION 501.32
 EXISTING BUILDING SQ. FOOTAGE: 3680 SF
 PARKING LOT DATA: SEE S-2
 LANDSCAPE DATA: SEE S-3
 METES & BOUNDS BY SURVEY OF A. EARL SMITH 12-12-68
 IRON CORNER PIPES REMOVED BY DOT
 BENCHMARK ELEV. 494.24 ON CORNER OF NOTTINGHAM & KIMBOLTON DR.
 NO DUMPSTER PROPOSED - TRASH CANS WILL BE CONTAINED
 EXISTING BUILDING LIGHTING PROVIDES PARKING LOT - NO ADDITIONAL LIGHTING PROPOSED
 EXISTING 50' APRON BY DOT TO REMAIN AND WILL BE UTILIZED
 EXISTING CONTOURS ON SHEET S-2
 SITE NOT IN 100 YR. FLOOD PLAIN

CARY CHRISTIAN CHURCH
PARKING LOT IMPROVEMENTS

APPROVED
 DATE: 6-20-91
 BY: JH TOCKER
 TOWN OF CARY
 ENGINEERING DEPARTMENT

Rev. Site Plan
T.O.C.
APPROVED
 P#2 4-17-91
 TC 6-27-91
 Charles R. Friedrich
 5/20/91

REVISIONS	BY



HORTICULTURAL RESOURCES
 CHARLES R. FRIEDRICH LANDSCAPE ARCHITECT
 240 DEW AVE CARY, NC 27513 919-460-1997

CARY CHRISTIAN CHURCH
 1503 WALNUT STREET, CARY, NC
 PARKING LOT IMPROVEMENTS
 EXISTING SITE CONDITIONS

DEMOLITION PLAN

DRAWN C.R. FRIEDRICH ALA	CHECKED
DATE MAY 17 1991	SCALE 1" = 40'
JOB NO. 0017	SHEET 3
S-1 3	

OFFICIAL APPROVED PLAN