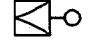
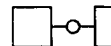
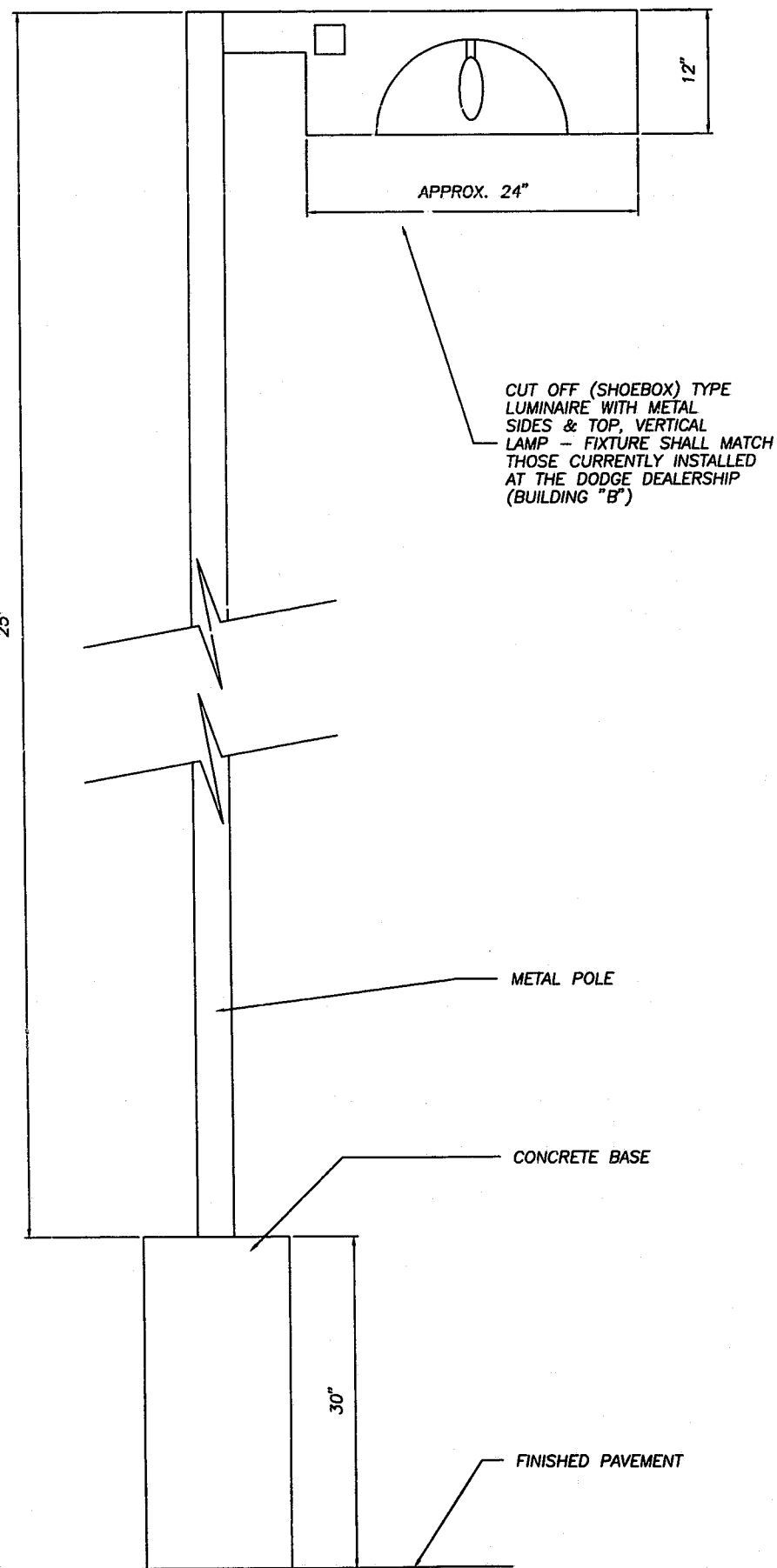
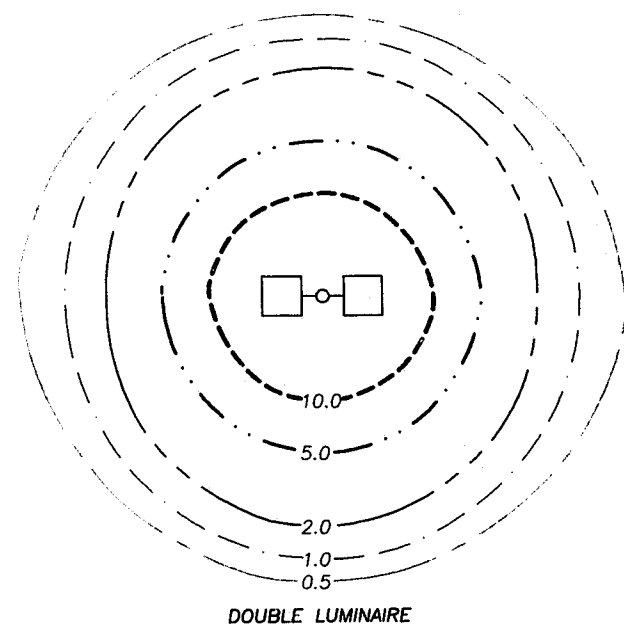
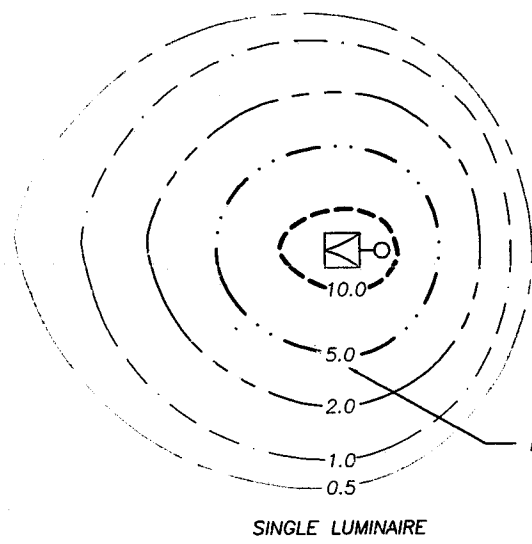
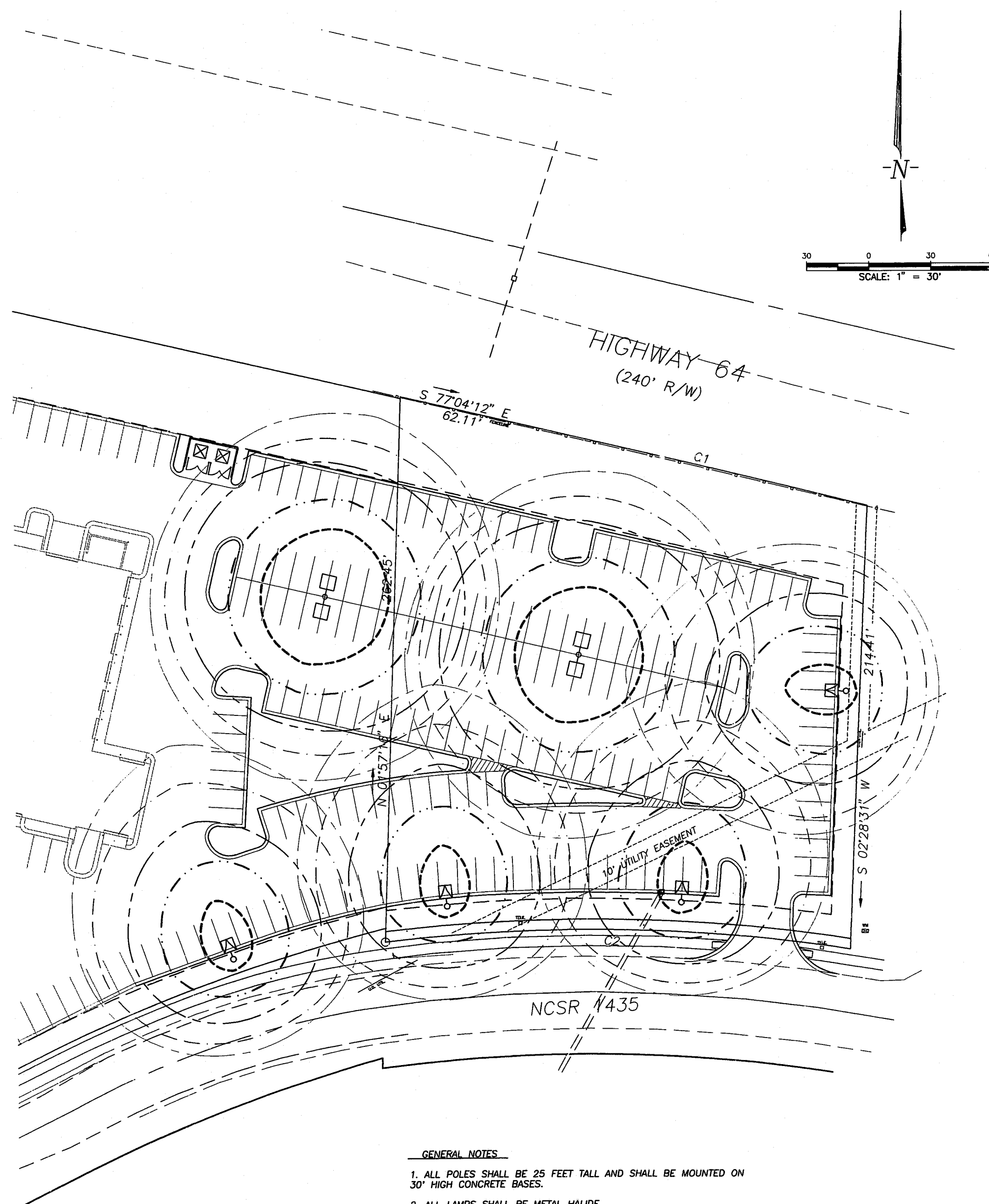


- LEGEND**
-  25 FOOT POLE WITH ONE (1) 1000-WATT METAL HALIDE LUMINAIRE (CUT-OFF TYPE) WITH FORWARD-THROW OPTICS.
 -  25 FOOT POLE WITH TWO (2) 1000-WATT METAL HALIDE LUMINAIRES (CUT-OFF TYPE) MOUNTED 180-DEGREES APART.

ISO-CANDLE CURVES



TYPICAL LIGHTING POLE/LUMINAIRE
NOT TO SCALE

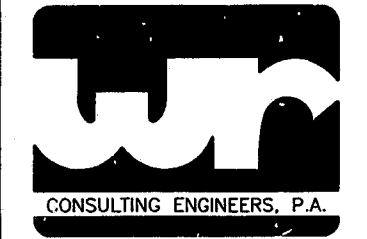


GENERAL NOTES

1. ALL POLES SHALL BE 25 FEET TALL AND SHALL BE MOUNTED ON 30" HIGH CONCRETE BASES.
2. ALL LAMPS SHALL BE METAL HALIDE.

DESIGN PARAMETERS

1. AVERAGE MAINTAINED FOOTCANDLE LEVEL - 1.75 FOOTCANDLES.
2. OPERATING HOURS OF LIGHTING:
 DISPLAY/PARKING AREA - "ON" AT DUSK; "OFF" AT 10:00 PM
 SECURITY (*) LIGHTING - "ON" AT DUSK; "OFF" AT DAWN
 (*) - APPROXIMATELY 10% OF TOTAL LUMINAIRES
 CIRCUITING SHALL BE SUCH THAT 50% OF THE LIGHTING MAY BE SWITCHED "OFF", IF DESIRED.



WITHERS & RAVENEL
 Engineering & Surveying, Inc.
 1149 Executive Circle
 Cary, N.C. 27511
 PHONE : 919-469-3340
 FAX : 919-467-6008

SEALS



DRAWING TITLE

LIGHTING PLAN

PROJECT TITLE 94139

CARY AUTO MALL PARKING EXPANSION

REVISIONS

NUMBER	DESCRIPTION	DATE
1	REVISIONS PER I.O.C.	1/25/95
2	1st REVIEW	2/09/95
3	2nd REVIEW	2/09/95
	DELETE POND	5/23/95

DRAWN BY ATB
 CHECKED BY LGS
 DATE ISSUED 12/29/94
 SCALE HORIZ: 1"=30' / VERT: 1"=4'

SHEET NO. 5
 OF 6