

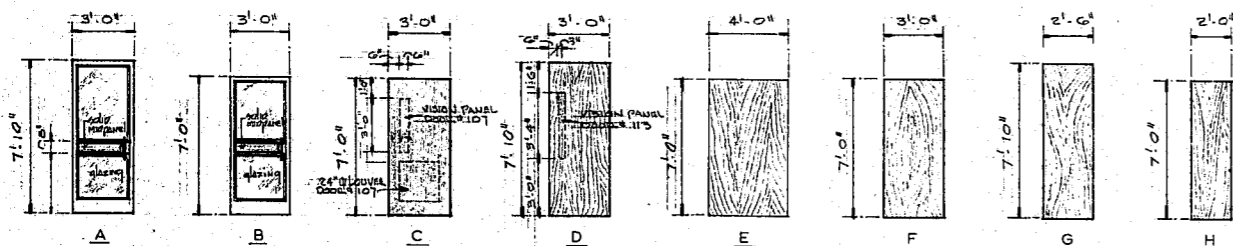
ROOM FINISH SCHEDULE

ROOM NAME	FLOOR	BASE	WAINSCOT	WALL MATERIAL	WALL FINISH	CEILING	CEILING HEIGHT	REMARKS
ENTRY	BRICK	WOOD ON STUD WALL ONLY (305)	—	BRICK	BRICK	GYP. BOARD	8'-0"	
EXECUTIVE DIRECTOR	CARPET	WOOD (DL-305)	—	GYP. BOARD	VINYL WALL COVER.	SUSPENDED ACQU. TILE	8'-0"	
EXEC. SECRETARY	CARPET	WOOD (DL-305)	—	GYP. BOARD	VINYL WALL COVER.	SUSPENDED ACQU. TILE	8'-0"	
WORK AREA	SHEET VINYL	WOOD (DL-305)	—	CONC. BLOCK	PAINTED	SUSPENDED ACQU. TILE	8'-0"	
MECHANICAL EQUIP.	CONCRETE	NONE	—	CONC. BLOCK	PAINTED	GYP. BOARD SUB-CILING (PAINT)	10'-11"	
SECRETARIES	CARPET	WOOD (DL-305)	—	GYP. BOARD	VINYL WALL COVER.	SUSPENDED ACQU. TILE	8'-0"	
RECEPTION/LOBBY	BRICK	WOOD (DL-305)	—	BRICK	BRICK	GYP. BOARD	8'-0"	
ENTRY (REAR)	BRICK	NONE	—	BRICK	BRICK	GYP. BOARD	8'-0"	
JANITOR	CEG. TILE	CEG. TILE	CEG. TILE TO 4'-0" ABOVE MOP ACCEPT	CONC. BLOCK	PAINTED	SUSPENDED ACQU. TILE	8'-0"	
WOMEN	CEG. TILE	CEG. TILE	—	CONC. BLOCK	CEG. TILE	SUSPENDED ACQU. TILE	8'-0"	
MEN	CEG. TILE	CEG. TILE	—	CONC. BLOCK	CEG. TILE	SUSPENDED ACQU. TILE	8'-0"	
PROJECTION/STORAGE	CARPET	WOOD (DL-305)	—	GYP. BOARD	PAINTED	GYP. BOARD SUB-CILING (PAINT)	10'-11"	
BOARD ROOM	CARPET	WOOD (DL-305)	—	GYP. BOARD	VINYL WALL COVER.	SUSPENDED ACQU. TILE	9'-0"	

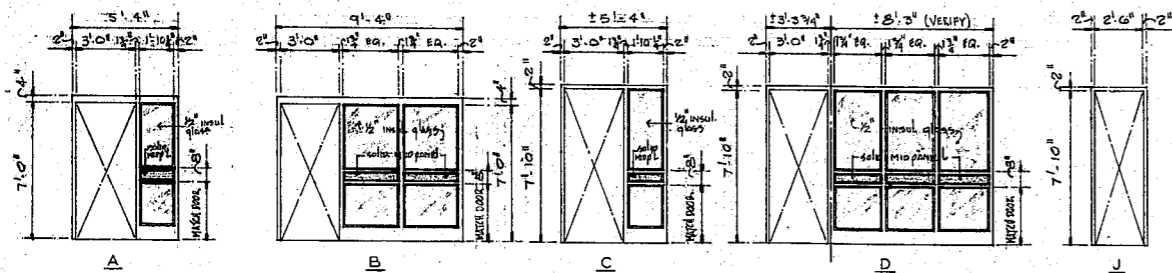
DOOR SCHEDULE

DOOR NO.	SIZE	TYPE	MATERIAL		FRAME			REMARKS		
			GLAZING	TYPE	MATERIAL	HEAD	JAMB		SILL (TYPE)	
101	3'-0" x 7'-0" x 1 3/4"	B	ALUMINUM	1/2 BRONZE	A	ALUMINUM	709	510	TYPE 1	
102	3'-0" x 7'-10" x 1 3/4"	A	ALUMINUM	1/2 CLEAR	C	ALUMINUM	710	509	507	TYPE 1
103	3'-0" x 7'-10" x 1 3/4"	D	WOOD	—	F	ALUM.	519	508	509	TYPE 2
104	3'-0" x 7'-10" x 1 3/4"	D	WOOD	—	G	ALUM.	519	508	509	TYPE 2
105	3'-0" x 7'-10" x 1 3/4"	D	WOOD	—	G	ALUMINUM	519	508 (SIM)	—	TYPE 2
106	3'-0" x 7'-0" x 1 3/4"	Z	HOL. METAL	—	H	HOL. METAL	516	504	—	TYPE 3
107	3'-0" x 7'-0" x 1 3/4"	Z	HOL. METAL	VISION PANEL 1/2 CLEAR	H	HOL. METAL	518	503	—	TYPE 4
108	3'-0" x 7'-0" x 1 3/4"	B	ALUMINUM	1/2 BRONZE	B	ALUMINUM	717	515	510	TYPE 1
109	3'-0" x 7'-10" x 1 3/4"	A	ALUMINUM	1/2 CLEAR	D	ALUMINUM	710	515	513	TYPE 1
110	2'-0" x 7'-0" x 1 3/4"	H	WOOD	—	I	HOL. METAL	515 (SIM) W/O CO. TILE	506	520	
111	3'-0" x 7'-0" x 1 3/4"	F	WOOD	—	H	HOL. METAL	515	505	520	
112	3'-0" x 7'-0" x 1 3/4"	F	WOOD	—	H	HOL. METAL	515	505	520	
113	3'-0" x 7'-10" x 1 3/4"	D	WOOD	1/2 BRONZE	G	ALUMINUM	519 (SIM)	508	—	TYPE 2
114	2'-0" x 7'-0" x 1 3/4"	F	WOOD	—	J	ALUMINUM	519 (SIM)	508	—	
115	4'-0" x 7'-0" x 1 3/4"	B	WOOD	HOL. CORE	—	WOOD	—	514	517	CONGR. BD. RM. SIDE OF DOOR W/ 1/2" COAK (AS PER DETAIL)
116	4'-0" x 7'-0" x 1 3/4"	B	WOOD	HOL. CORE	—	WOOD	—	514	517	LOVEG. BD. RM. SIDE OF DOOR W/ 1/2" COAK (AS PER DETAIL)

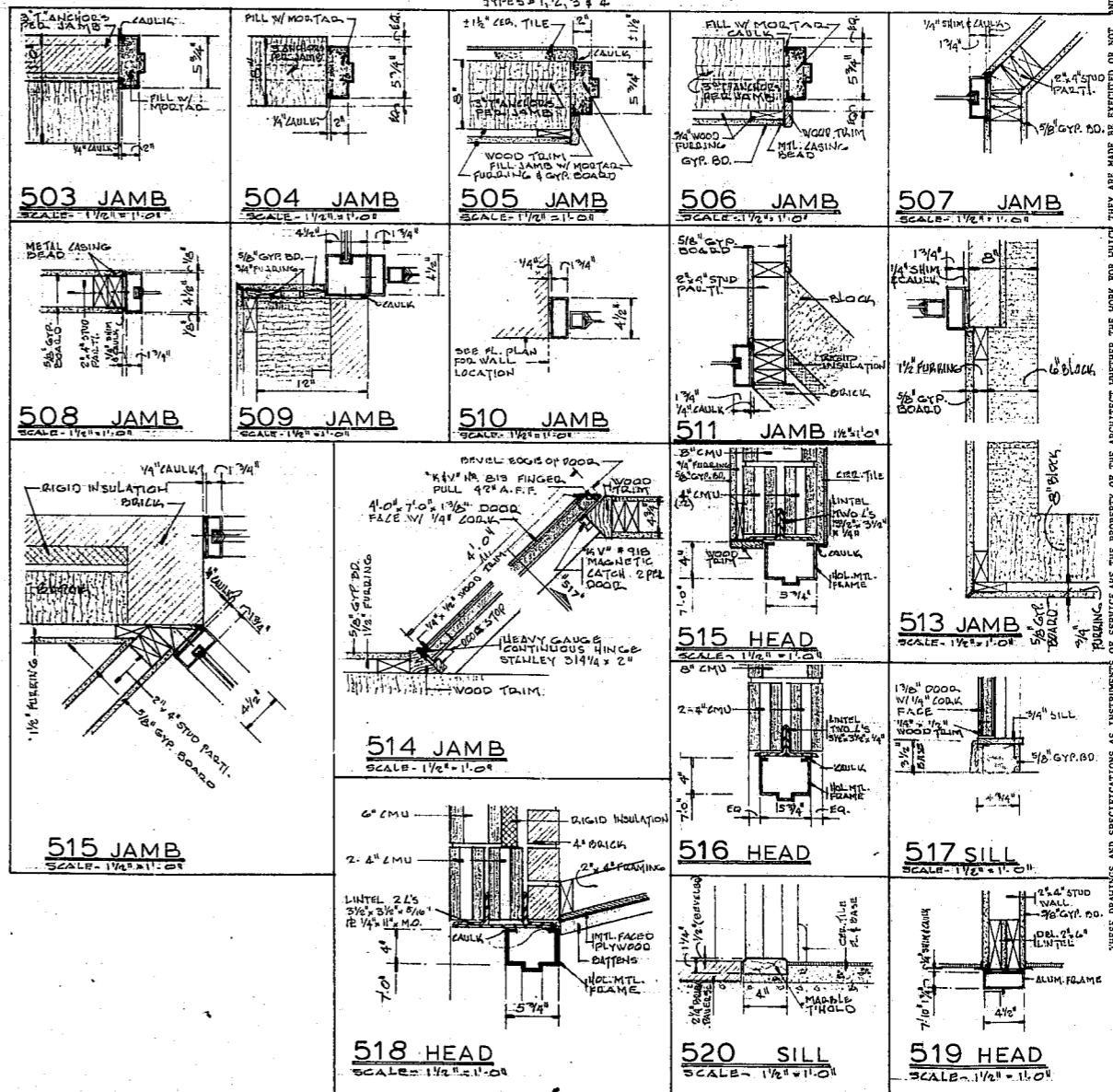
NOTES
SEE SPECIFICATIONS FOR THRESHOLD
TYPES # 1, 2, 3 & 4



501 DOOR TYPES
SCALE - 1/4" = 1'-0"



502 DOOR FRAME TYPES
SCALE - 1/4" = 1'-0"



THESE DRAWINGS AND SPECIFICATIONS AS INSTRUMENTS OF SERVICE ARE THE PROPERTY OF THE ARCHITECT. ANY REUSE OR REPRODUCTION WITHOUT THE ARCHITECT'S WRITTEN PERMISSION IS STRICTLY PROHIBITED.

COMMISSIONER
6109
DRAWN BY
VINCENT
CHECKED BY
SEARS

**HACKNEY, SEARS
& ASSOC., ARCHITECTS**
321 EAST CHAPEL HILL STREET, DURHAM, N.C.
1142 EXECUTIVE CIRCLE, CARY, N.C.

OFFICE BUILDING FOR
CARY CHAMBER OF COMMERCE
WEST CHATHAM STREET
CARY, NORTH CAROLINA

DATE: JAN. 20, 1983
REVISIONS:

SHEET NO.
A-5
OF EIGHT SHEETS