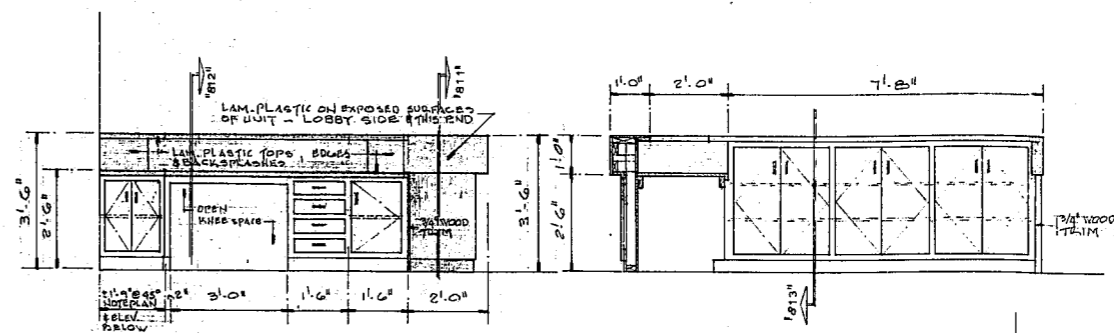


801 ELEVATION
SCALE - 1/2" = 1'-0"

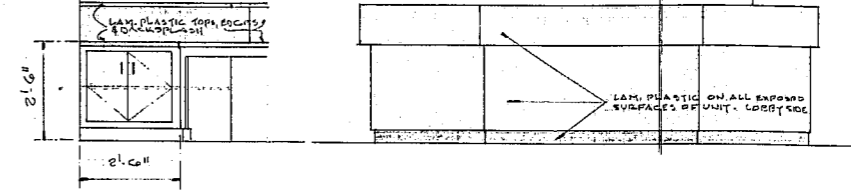
802 ELEVATION
SCALE - 1/2" = 1'-0"

803 ELEVATION
SCALE - 1/2" = 1'-0"



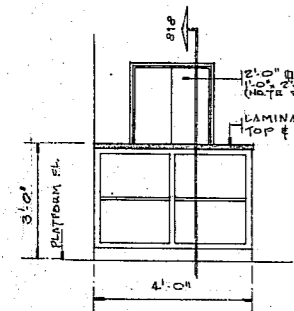
804 ELEVATION
SCALE - 1/2" = 1'-0"

805 ELEVATION
SCALE - 1/2" = 1'-0"

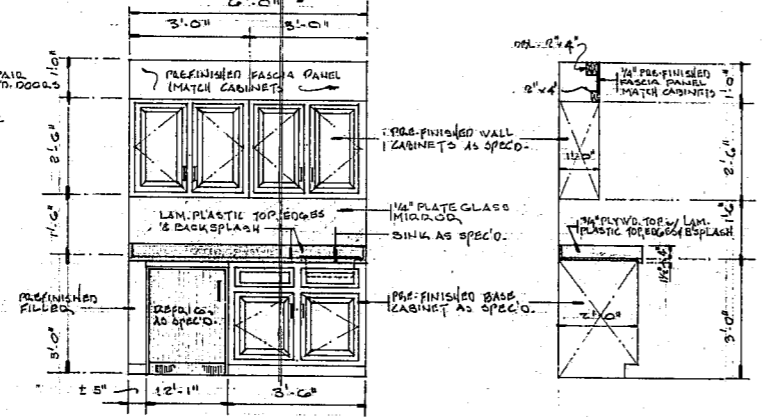


806 ELEVATION
SCALE - 1/2" = 1'-0"

807 ELEVATION
SCALE - 1/2" = 1'-0"

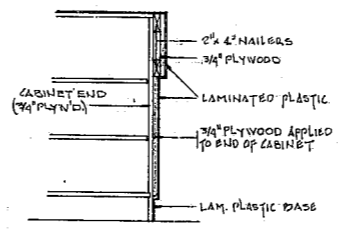


808 ELEVATION
SCALE - 1/2" = 1'-0"

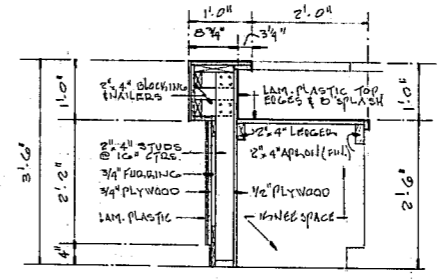


809 ELEVATION
SCALE - 1/2" = 1'-0"

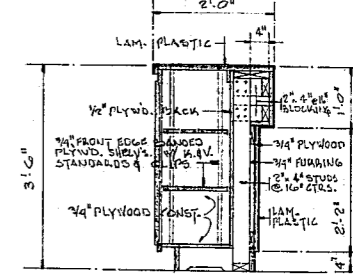
810 SECTION
SCALE - 1/2" = 1'-0"



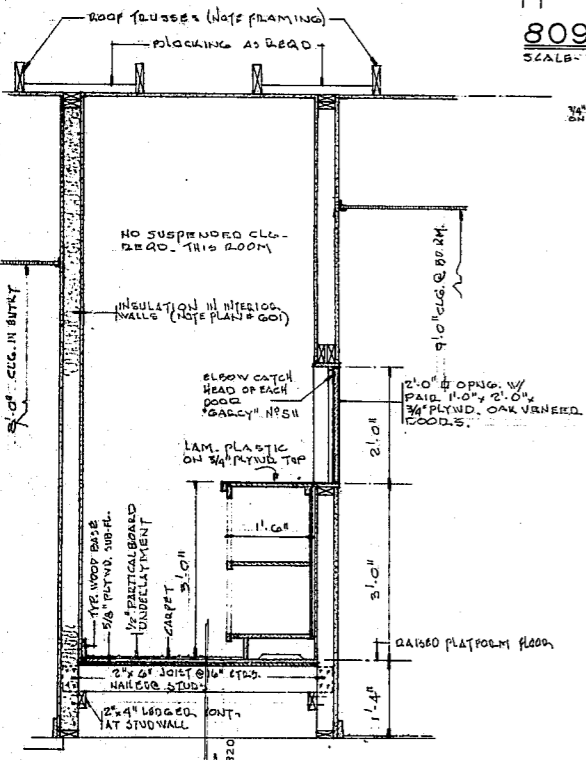
811 SECTION
SCALE - 3/4" = 1'-0"



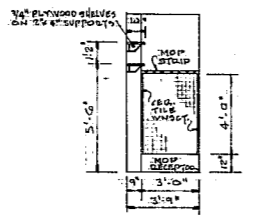
812 SECTION
SCALE - 3/4" = 1'-0"



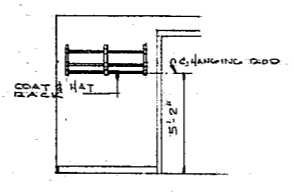
813 SECTION
SCALE - 3/4" = 1'-0"



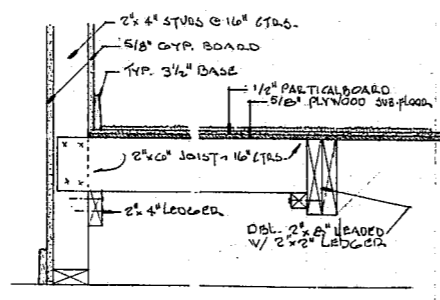
818 SECTION
SCALE - 3/4" = 1'-0"



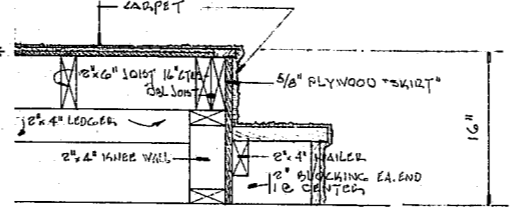
814 SECTION
SCALE - 1/4" = 1'-0"



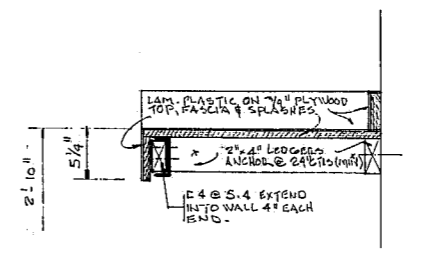
815 ELEVATION
SCALE - 1/4" = 1'-0"



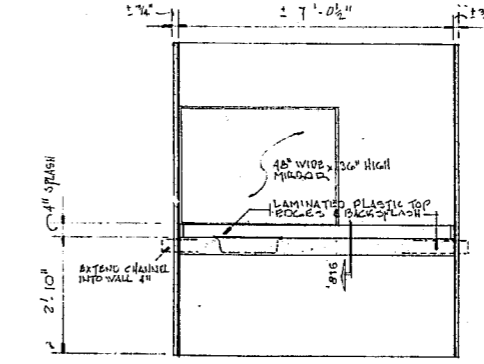
819 SECTION
SCALE - 1/2" = 1'-0"



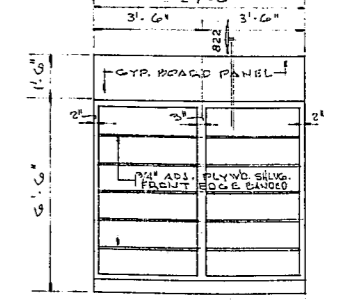
820 SECTION
SCALE - 1/2" = 1'-0"



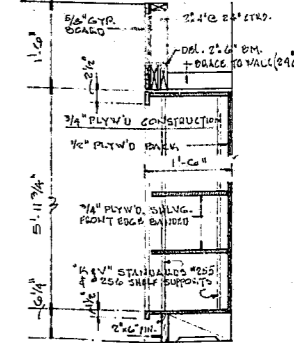
816 SECTION
SCALE - 1/2" = 1'-0"



821 ELEVATION
SCALE - 1/2" = 1'-0"



817 ELEVATION
SCALE - 1/2" = 1'-0"



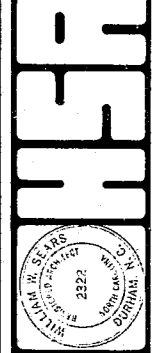
822 SECTION
SCALE - 3/4" = 1'-0"

THESE DRAWINGS AND SPECIFICATIONS AS INSTRUMENTS OF SERVICE ARE THE PROPERTY OF THE ARCHITECT. NO PART OF THESE DRAWINGS IS TO BE REPRODUCED OR TRANSMITTED IN ANY FORM OR BY ANY MEANS, ELECTRONIC OR MECHANICAL, INCLUDING PHOTOCOPYING, RECORDING, OR BY ANY INFORMATION STORAGE AND RETRIEVAL SYSTEM, WITHOUT THE WRITTEN PERMISSION OF THE ARCHITECT.

COMMISSION
8109
DRAWN BY
VINCENT
CHECKED BY
SEARS

**HACKNEY, SEARS
& ASSOC., ARCHITECTS**

321 EAST CHAPEL HILL STREET, DURHAM, N.C.
1142 EXECUTIVE CIRCLE, CARY, N.C.



**OFFICE BUILDING FOR
CARY CHAMBER OF COMMERCE**
WEST CHATHAM STREET
CARY, NORTH CAROLINA

DATE: JAN. 20, 1983
REVISIONS:

SHEET NO.
A-8
OF EIGHT SHEETS