

PANEL SCHEDULE "A" SURFACE MOUNTED	
1	200 AMP MAIN BREAKER
2	RECEPT TEL BOARD
3	CASE STUD LIGHT
4	EXH. FAN
5	EXH. FAN
6	EXH. FAN
7	EXH. FAN
8	EXH. FAN
9	EXH. FAN
10	EXH. FAN
11	EXH. FAN
12	EXH. FAN
13	EXH. FAN
14	EXH. FAN
15	EXH. FAN
16	EXH. FAN
17	EXH. FAN
18	EXH. FAN
19	EXH. FAN
20	EXH. FAN
21	EXH. FAN
22	EXH. FAN
23	EXH. FAN
24	EXH. FAN
25	EXH. FAN
26	EXH. FAN
27	EXH. FAN
28	EXH. FAN
29	EXH. FAN
30	EXH. FAN
31	EXH. FAN
32	EXH. FAN
33	EXH. FAN
34	EXH. FAN
35	EXH. FAN
36	EXH. FAN
37	EXH. FAN
38	EXH. FAN
39	EXH. FAN
40	EXH. FAN
41	EXH. FAN
42	EXH. FAN

NOTE:  
1) EXTEND FROM JUNCTIONS FOR BOTH TELEPHONES & RECEPTACLES & ROUTE IN CHASE AREA IN COUNTER, USE ALL RECEPTACLES AS SHOWN.

SYMBOL SCHEDULE	
⊖ A	FLUORESCENT LIGHT FIXTURE, LETTER DESIGNATES TYPE.
⊖ G	INCANDESCENT LIGHT FIXTURES, LETTER DESIGNATES TYPE.
⊖	HUBBELL #5242, BRY. #1, A.H. & H., OR APPROVED EQUAL, DUPLEX RECEPTACLE MOUNTED 18" A.F.F., 6" ABOVE COUNTERS OR AS NOTED ON PLANS. INSTALL #9342 WHERE SINGLE RECEPTACLE ON CIRCUIT.
⊖	TWO (2) DUPLEX RECEPTACLES AS SPECIFIED ABOVE, MOUNTED IN 2-GANG BOX WITH SINGLE COVER PLATE.
⊖ WP	DUPLEX RECEPTACLE WITH WEATHERPROOF COVER HAVING SPRING LOADED DOOR MOUNTED 24" ABOVE GRADE OR FIN FLOOR, COVER TO BE ALUMINUM.
⊖ EWC	DUPLEX RECEPTACLE BEHIND WATER COOLER, COORDINATE THE INSTALLATION WITH PLUMBING CONTRACTOR BEFORE ROUGHING IN.
⊖	JUNCTION BOX.
⊖	TELEPHONE OUTLET WITH ONE HOLE COVER MOUNTED 18" A.F.F., 6" ABOVE COUNTERS, OR AS NOTED.
⊖	BRYANT #4801, HUBBELL, A.H. & H. OR EQUAL SINGLE POLE SWITCH RECESSED 48" A.F.F. TO TOP OF SWITCH.
⊖	BRYANT #4803, HUBBELL, A.H. & H. OR EQUAL 3-WAY SWITCH RECESSED 48" A.F.F. TO TOP OF SWITCH.
⊖	SWITCH WITH TOGGLE, EXTEND AND CONNECT TO RECESSED SCREEN MOTOR AND CONNECT.
⊖	HUNT #A-1000 OR EQUAL 1000 WATT INCANDESCENT DIMMER MOUNTED 48" A.F.F. TO TOP OF KNOB. (G) FOR 600. (B) FOR 1500 WATT. (WHERE (B) IS SHOWN PROVIDE 3-WAY)
→	120 VOLT HOMERUN TO PANEL.
→	240 VOLT HOMERUN TO PANEL - SEE PANEL SCHEDULE.
→	CONDUIT AND WIRING ABOVE CEILING OR IN WALLS.
→	CONDUIT AND WIRING BELOW FLOOR OR IN WALLS.

LIGHT FIXTURE SCHEDULE	
A	DAY-BRITE CG244-C120, GIBSON, COLUMBIA OR APPROVED EQUAL 2 X 4 LAY-IN FIXTURE WITH 22 GA. DIE-EMBOSSED 1 PIECE HOUSING, .125" ACRYLIC PRISMATIC LENS AND A FLUSH WHITE MITERED STEEL DOOR FRAME. (4) 35 R.S. LAMPS. 120V.
B	SAME AS A EXCEPT WITH (2) 35 R.S. LAMPS.
C	SAME AS A EXCEPT 2 X 2 WITH (2) 40W U-BEND LAMPS.
D	DAY-BRITE WA-142 GIBSON, COLUMBIA OR APPROVED EQUAL 2 LAMP WRAPAROUND WITH A 20 GAUGE STEEL HOUSING. PROVIDE WHITE ENAMEL FINISH AND (2) 35 R.S. LAMPS. 120 VOLT.
E	ALL-BRITE C-240-H, WILLIAMS, METALUX OR APPROVED EQUAL 4 FOOT STRIP WITH 20 GA. STEEL HOUSING, BAKED WHITE ENAMEL FINISH, AND (2) 35 R.S. LAMPS. 120 VOLT.
F	OMEGA W3001TW, MARCO, KURT VERSEN OR APPROVED EQUAL RECESSED WALL WASH WITH 20 GAUGE STEEL HOUSING, SPECULAR SILVER ADJUSTABLE REFLECTOR. (1) 75 WATT A-19 I.F. LAMP. 120 VOLT.
G	OMEGA EY300TW, MARCO, KURT VERSEN OR APPROVED EQUAL RECESSED DOWNLITE WITH 20 GAUGE STEEL HOUSING, SPECULAR SILVER ALZAK REFLECTOR AND (1) 100 A-19 I.F. LAMP. 120 VOLT.
H	SAME AS G EXCEPT EY400TW WITH (1) 150 A-21 I.F. LAMP. 120 VOLT.
K	SAME AS G EXCEPT W4001TW WITH (1) 150 A-21 I.F. LAMP. 120 VOLT.
L	OMEGA PS441-E-E MARCO, KURT VERSEN OR APPROVED EQUAL WALL MOUNTED UP/DOWN LITE WITH EXTRUDED ALUMINUM HOUSING, WHITE FINISH AND CAST ALUMINUM BRACKET. PROVIDE WITH SPECULAR ALZAK A-LAMP REFLECTORS FOR (1) 100 A-21 UP AND (1) 75-A-19 DOWN. 120 VOLT.
M	PRINCETON #PEC-345, KIM, HUBBELL, OR APPROVED EQUAL, 120 VOLT, INCANDESCENT WALK WAY LIGHT. FIXTURE TO BE OF METAL CONSTRUCTION, 24" WIDE X 36" HIGH W/CAP DIAMETER OF 8". FINISH TO BE BRONZE. CAP DIFFUSER TO BE WHITE TRANSLUCENT PLASTIC 3" HIGH. W/(1) 200 WATT LAMP.
N	OMEGA #CS823TW/SCA, MARCO, PRECOLITE OR EQUAL RECESSED DIRECTIONAL WALL WASH WITH SLOPED CEILING ADAPTER FROM 5° TO 30°, WITH 150 WATT PAR 38 FLOOD SIDE-PRONGED, U.L. LAMP LABEL. LAMP TILT ROTATION SHALL PERMIT 360° AND TILT UP TO 35°. MOUNT IN SOFFIT AS SHOWN ON PLANS. FIXTURE SHALL BE U.L. LISTED FOR THROUGH WIRING.
P	MARKSTONE #T4430-Y, PRESCOLITE, HALO, OR APPROVED EQUAL, 120 VOLT, INCANDESCENT LIGHT. FIXTURE TO BE CLASSIC CYLINDER TYPE W/WHITE FINISH. W/(1) 75 WATT 15C PAR 16 SPOT LAMP PER FIXTURE. PROVIDE NECESSARY #74060 OUTLET BOX CANOPY, W/MATTE WHITE FINISH, PER FIXTURE.

TOTAL CONN'D LOAD, KVA-PHASE-A: 15.2 KVA-B: 12.6 KVA  
NOTE: 1) RATE OUTSIDE LIGHTING THROUGH A TOPIC #72132-A TO NOMINAL TIME CLOCK OR APPROVED EQUAL.  
2) EQUIPMENT TO BE SUITABLE FOR SERVICE EQUIPMENT.  
3) ALL BREAKERS TO BE RATED FOR 22,000 AMP INTERRUPTING CAPACITY.

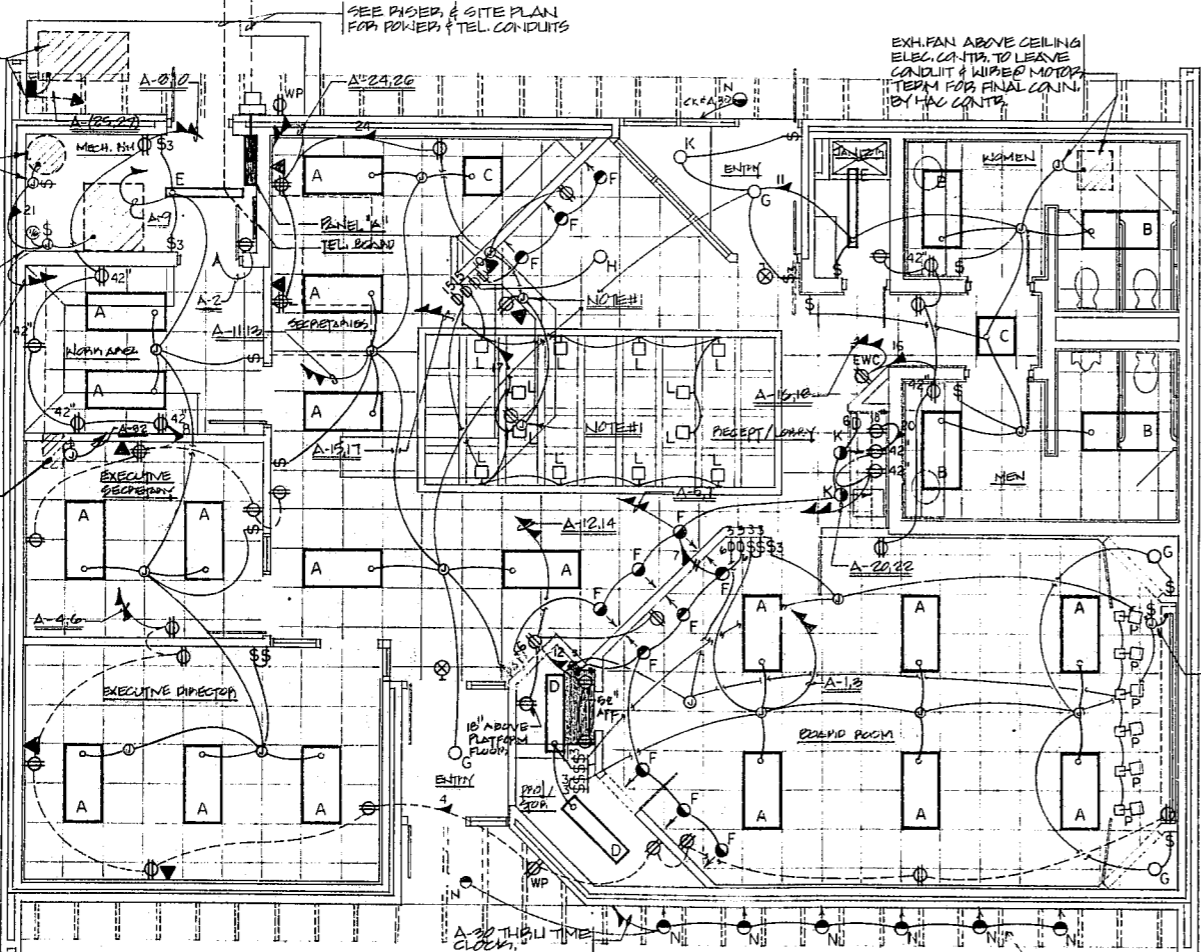
AIR-COOLED CONDENSER PROVIDE A 60 AMP 2 POLE NEMA 3B DISC & FUSE @ 60 AMPS. EXTEND C.W. WIRE TO MTP. TERMINALS FOR FINAL CONN. BY HAC CONTR.

ELECTRIC WATER HEATER PROVIDE A JCT. TOGGLE. EXTEND & CONNECT.

PROVIDE A JCT. TOGGLE FOR FURN. MOTOR. EXTEND CONDUIT & WIRE TO MTP. TERMINALS & LEAVE SLACK WIRE FOR FINAL CONNECTION BY HAC CONTRACTOR.

A-21.23

ATTIC FAN 1/2 H.P. @ 120V. PROVIDE A JCT. WITH TOGGLE IN ATTIC & DISCONNECT TO FAN. EXTEND CONDUITS WIRE TO MTP. TERMINALS FOR FINAL CONNECTION BY HAC CONTR.



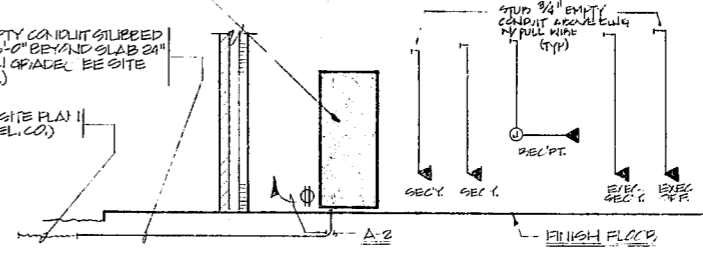
ELECTRICAL POWER & LIGHTING FLOOR PLAN  
SCALE: 1/4" = 1'-0"

KEEP LIGHTS AS CLOSE TO THE FRONT OF THE OPERATING AS POSSIBLE.

2" X 3" X 3/4" THICK PLASTER TELEPHONE BOARD.

2" EMPTY CONDUIT SLIPPED OUT 5'-0" BEYOND SLAB 24" BELOW GRADE (SEE SITE PLAN).

SEE SITE PLAN II (BY TEL. CO.)

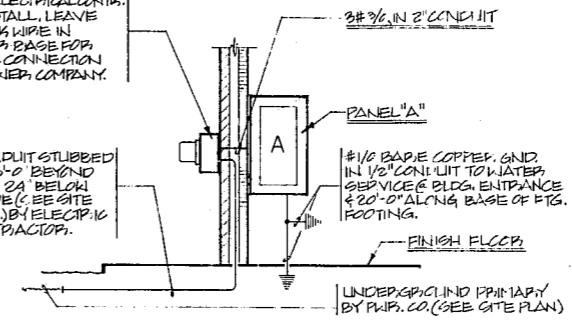


TELEPHONE RISER DIAGRAM  
SCALE-NONE

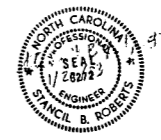
METERS BY P.W.P. CO. & THE ELECTRICAL CONTR. TO INSTALL, LEAVE SLACK WIRE IN METER BASE FOR FINAL CONNECTION BY POWER COMPANY.

ABOVE CEILING (VERIFY WITH SIDE BEFORE INSTALLING)

2" CONDUIT SLIPPED OUT 5'-0" BEYOND SLAB 24" BELOW GRADE (SEE SITE PLAN) BY ELECTRICAL CONTRACTOR.



POWER RISER DIAGRAM  
SCALE-NONE



KNOTT & ROBERTS, P.A.  
ENGINEERS  
1014 CENTRAL CAROLINA BANK BUILDING  
DURHAM, N.C. 27701  
TELEPHONE 919-683-1388

COMMISSION 8109  
DRAWN BY  
CHECKED BY

HACKNEY, SEARS & ASSOC., ARCHITECTS  
321 EAST CHAPEL HILL STREET, DURHAM, N.C.  
1142 EXECUTIVE CIRCLE, CARY, N.C.

OFFICE BUILDING FOR  
CARY CHAMBER OF COMMERCE  
WEST CHATHAM STREET  
CARY, NORTH CAROLINA

DATE: JAN. 20 1983  
REVISIONS:

SHEET NO.  
F-2  
OF 2 SHEETS

THESE DRAWINGS AND SPECIFICATIONS ARE THE PROPERTY OF THE ARCHITECT FOR WHICH THEY ARE MADE. THEY ARE NOT TO BE USED ON OTHER WORK WITHOUT THE ARCHITECT'S AGREEMENT.