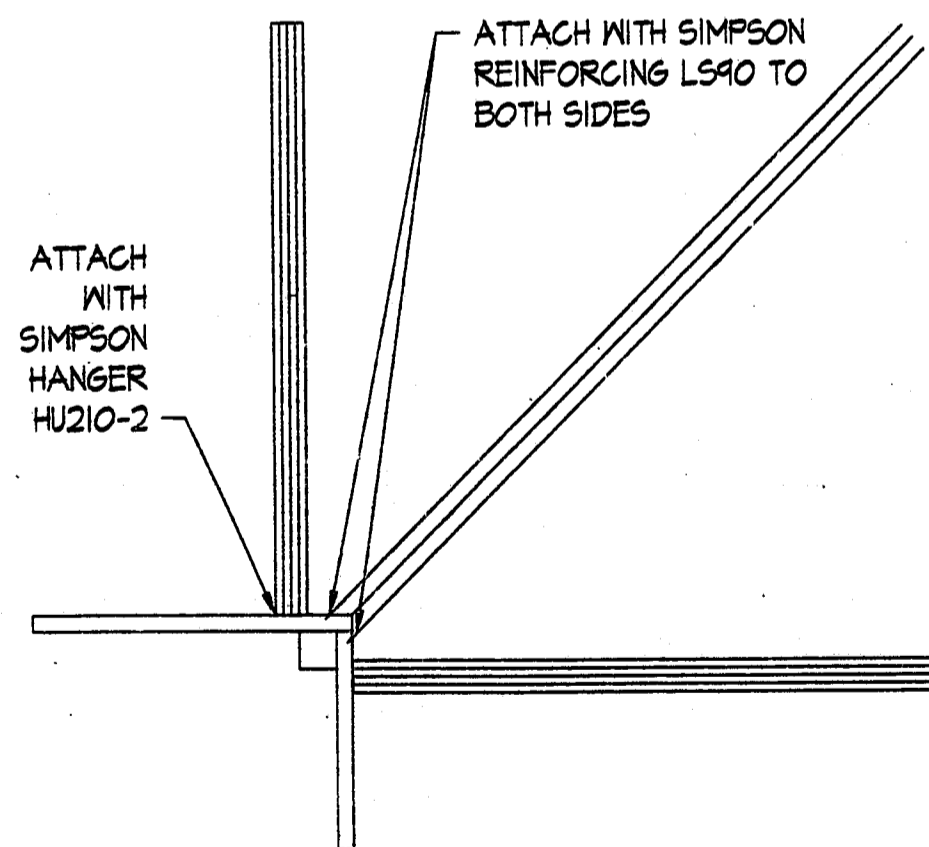
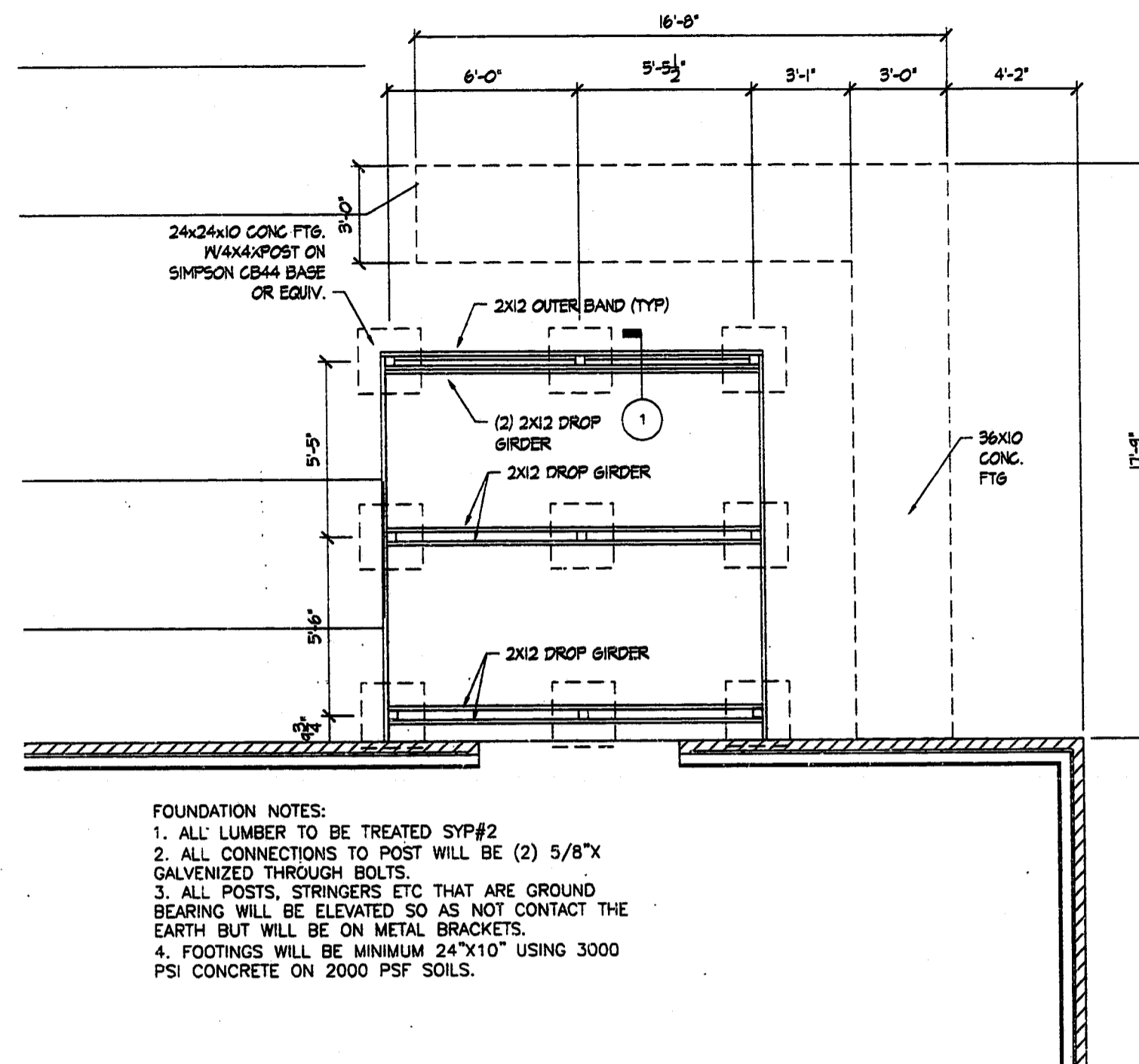


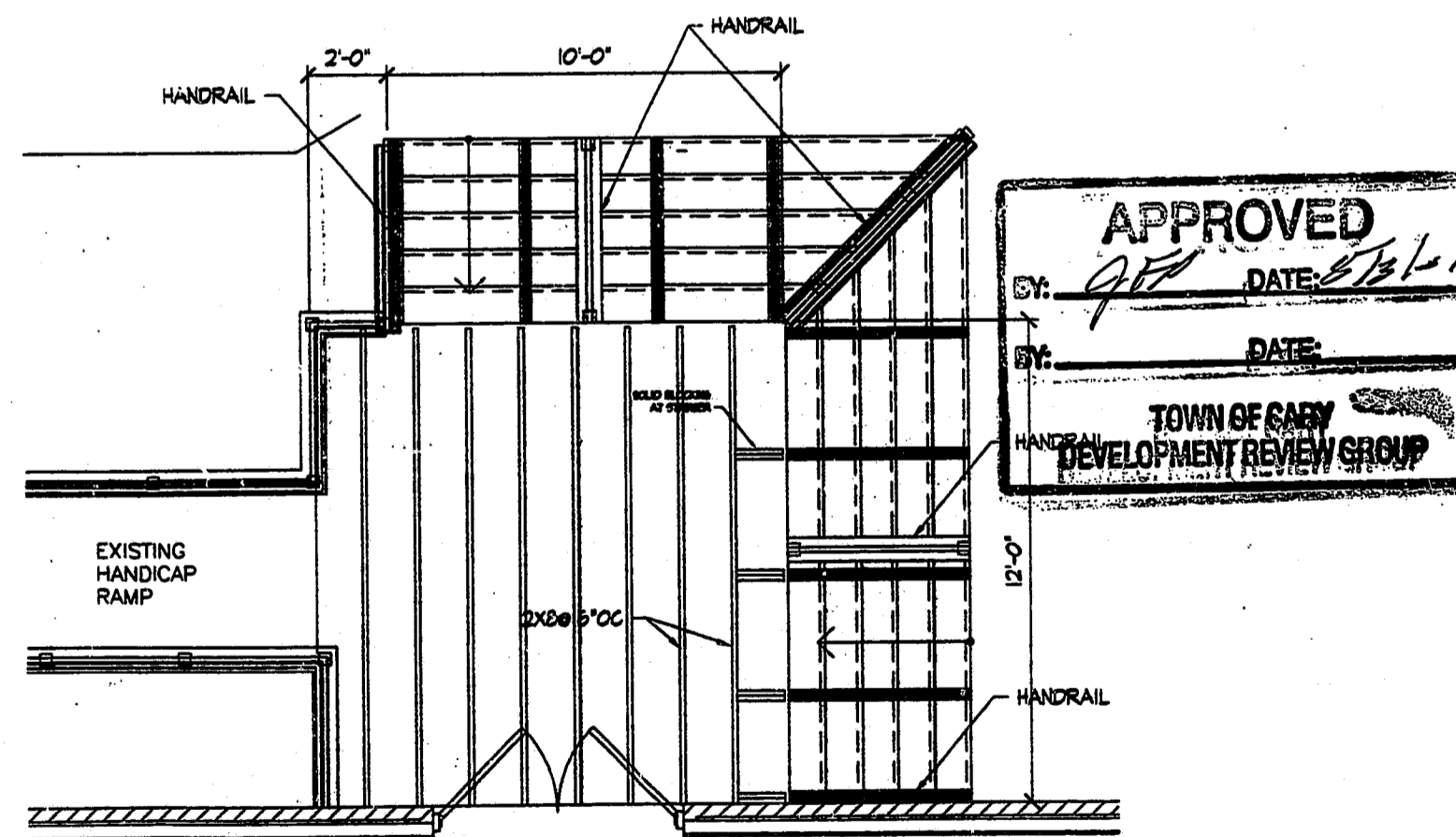
① TYP. STAIR CONN. AT FRONT  
SCALE 3/4"=1'



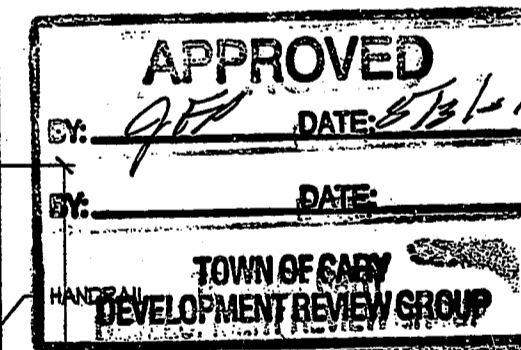
② STAIR CONN. AT CORNER  
SCALE 3/4"=1'



- FOUNDATION NOTES:
1. ALL LUMBER TO BE TREATED SYP#2
  2. ALL CONNECTIONS TO POST WILL BE (2) 5/8" GALVANIZED THROUGH BOLTS.
  3. ALL POSTS, STRINGERS ETC THAT ARE GROUND BEARING WILL BE ELEVATED SO AS NOT CONTACT THE EARTH BUT WILL BE ON METAL BRACKETS.
  4. FOOTINGS WILL BE MINIMUM 24"x10" USING 3000 PSI CONCRETE ON 2000 PSF SOILS.



- CONSTRUCTION NOTES:
1. ALL DECK BOARDS WILL BE ATTACHED USING GALV. DECK SCREWS.
  2. CORNER STRINGER WILL BE ATTACHED USING SIMPSON LS90 ANGLE HANGER ON BOTH SIDES.
  3. ALL HANDRAILS WILL BE AT 42" MINIMUM.
  4. MAXIMUM SPACE BETWEEN STRINGERS IS 36"
  5. DECK BOARDS ARE 2X8 SYP#2 TREATED MIN. U.N.O.



N/C

01-SP-057

Town of Cary - Development Review

Type: Staff 2 Staff 4 TC  
 Review: 1st 2nd 3rd 4th  
 Date: 4/17/01

Engineer: Utility  
 Erosion Control: Planner  
 Date: 4/18/01

SEAL  
 NORTH CAROLINA  
 PROFESSIONAL ENGINEER  
 023259  
 PAUL ANTHONY ORR

WARD'S  
CUSTOM  
HOME  
DESIGN

7404-K CHAPEL HILL RD.  
RALEIGH, N.C. 27607  
PHONE: (919) 851-5922  
FAX: (919) 851-9926

CAROLINA CHRISTIAN CHURCH  
NEW 12X12 SIDE ENTRY DECK  
1503 WALNUT AVE, CARY NC

DRAWING TITLE DECK	
DRAWN BY:	DCW
CHECKED BY:	PHO
SCALE:	1/4"=1'
DATE:	3/29/2001
PROJECT	SHEET 1
2061	OF 1