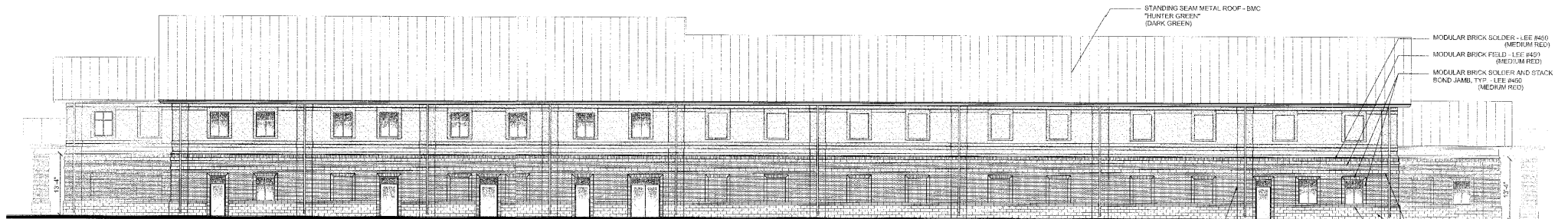


1 EAST ELEVATION
3/32" = 1'-0"



- STANDING SEAM METAL ROOF - BMC
"HUNTER GREEN"
(DARK GREEN)
- MODULAR BRICK SOLDIER - LEE #460
(MEDIUM RED)
- MODULAR BRICK FIELD - LEE #491
(MEDIUM RED)
- MODULAR BRICK SOLDIER AND STACK
ROUND JAMB TYP - LEE #460
(MEDIUM RED)
- SPLIT FACE CMU -
JOHNSON CONCRETE #JC-64 "HAZEL NUT"
(MEDIUM BROWN)
- SMOOTH CMU WATERTABLE -
JOHNSON CONCRETE #JC-64 "HAZEL NUT"
(MEDIUM BROWN)
- "VERTICAL ELEMENTS" TRANSITION TO
FLAT AFTER CORNERS FOR 1/4HS
PORTION OF SOUTH ELEVATION ONLY

2 SOUTH ELEVATION
3/32" = 1'-0"

03-SP-101-A
APPROVED
TOWN OF CARY

APPROVED BY	DRC	DATE	4-22-06
PLANNING	R.M.	DATE	8-31-06
ENGINEERING	TS	DATE	8-31-06

PRELIMINARY
NOT FOR CONSTRUCTION

BOBBITT DESIGN BUILD, INC.
607 GERMANTOWN ROAD
RALEIGH, NC 27607
FX (919) 851-1982
E-MAIL: design@bobbitt.com
WWW.BOBBITT.COM

BOBBITT
DESIGN • BUILD

Michael G. Huslage, PLLC
Architect
600 Germantown Road
Raleigh, NC 27607

DRAWN BY:
R.P.J.
CHK BY:

CARY CHURCH OF GOD
107 QUADE DR.
CARY, NORTH CAROLINA

24 X 36
3/32" = 1'-0"
2/7/06
1980-0013
ELEVATIONS

A4
OF 5