

WITHERS & RAVENEL
Engineering & Surveying, Inc.

1149 Executive Circle
Cary, N.C. 27511
PHONE : 919-469-3340
FAX : 919-467-8008

PROJECT _____

CARY
COMMONS

REVISIONS _____

- 1 1/24/95 TOC 1ST REVIEW DOU
- 2 4/3/95 PROP. GRADES DOU
- 3 6/13/95 REV. SITE & UTIL. DOU

DRAWN _____ CHECKED _____

DOU LS

SCALE _____ DATE _____

1"=50' 10/31/94

TITLE _____

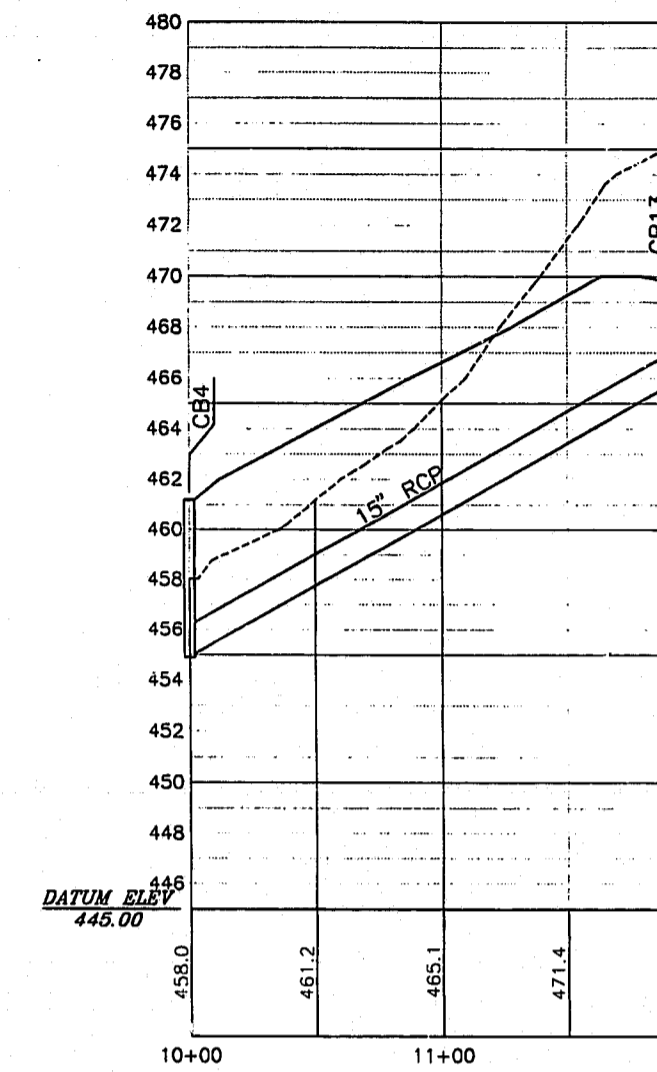
UTILITY
PROFILES

FILE NO. _____ JOB NO. _____

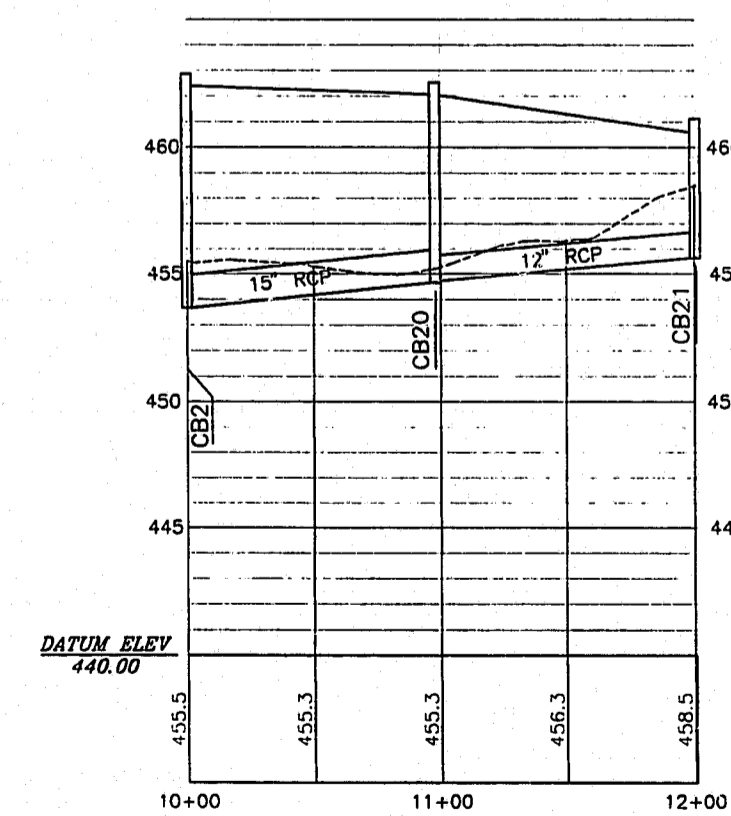
BASE 93043

SEAL _____ SHEET NO. _____

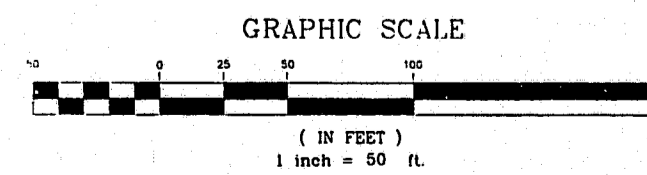
4



STORM SEWER LINE "B"



STORM SEWER LINE "D"



PRELIMINARY
NOT APPROVED FOR CONSTRUCTION

WITHERS & RAVENEL CONSULTING ENGINEERS, P.A.