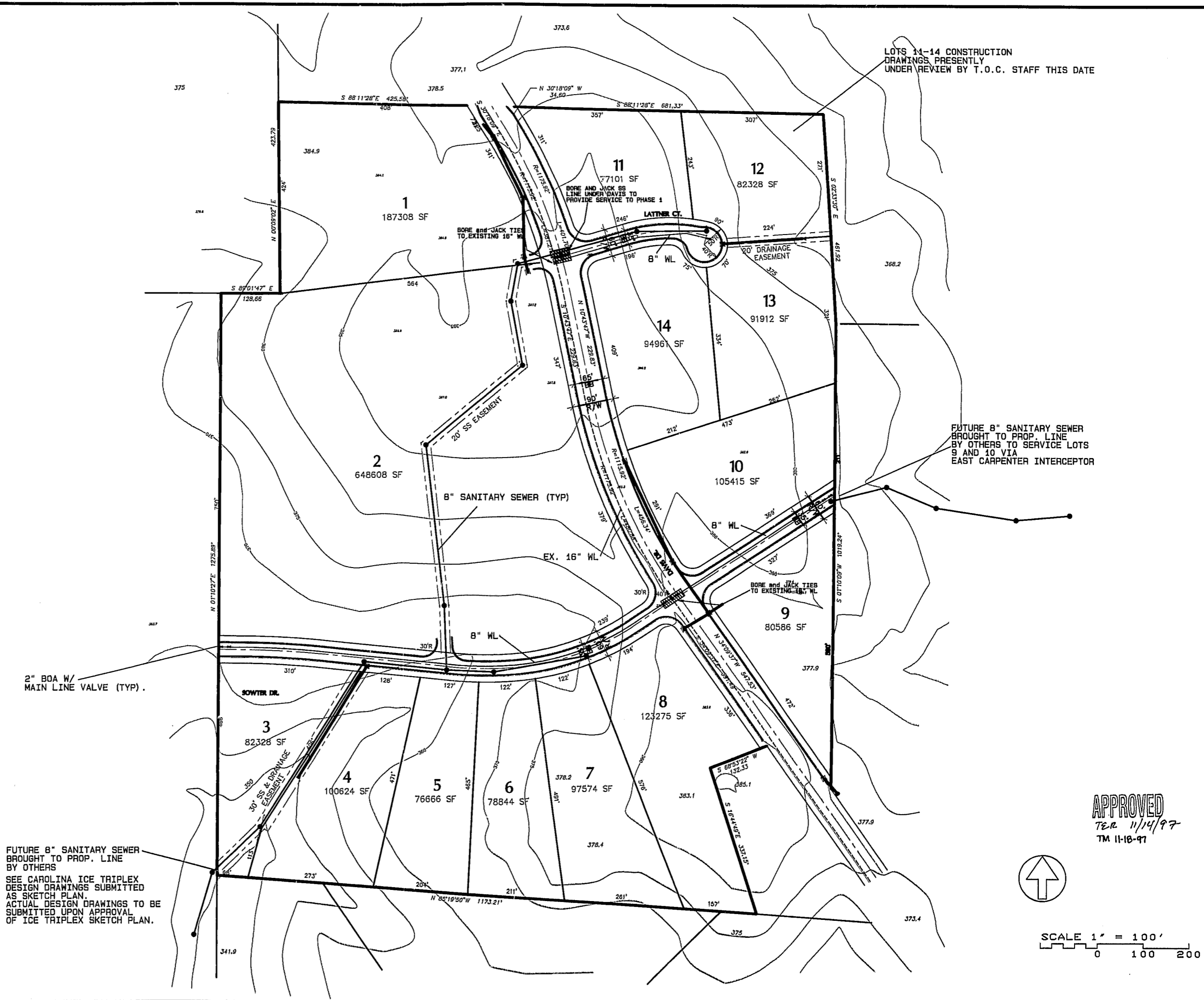


LOTS 11-14 CONSTRUCTION
DRAWINGS PRESENTLY
UNDER REVIEW BY T.O.C. STAFF THIS DATE

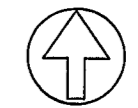


SIDEWALKS WILL BE
INSTALLED ON BOTH SIDES
OF DAVIS DR. AND ONE
SIDE OF THE PROPOSED 35' B/B
STREET SECTIONS IN CONJUNCTION
WITH SITE DEVELOPMENT ADJACENT TO
SAID STREETS.

FUTURE 8" SANITARY SEWER
BROUGHT TO PROP. LINE
BY OTHERS
SEE CAROLINA ICE TRIPLEX
DESIGN DRAWINGS SUBMITTED
AS SKETCH PLAN.
ACTUAL DESIGN DRAWINGS TO BE
SUBMITTED UPON APPROVAL
OF ICE TRIPLEX SKETCH PLAN.

FUTURE 8" SANITARY SEWER
BROUGHT TO PROP. LINE
BY OTHERS TO SERVICE LOTS
9 AND 10 VIA
EAST CARPENTER INTERCEPTOR

APPROVED
T.E.R. 11/14/97
TM 11-16-97



SCALE 1" = 100'
0 100 200