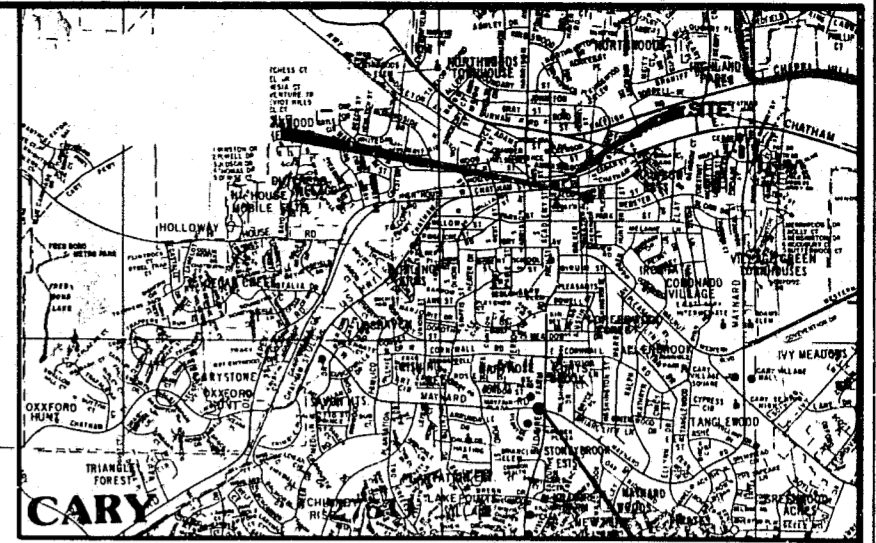
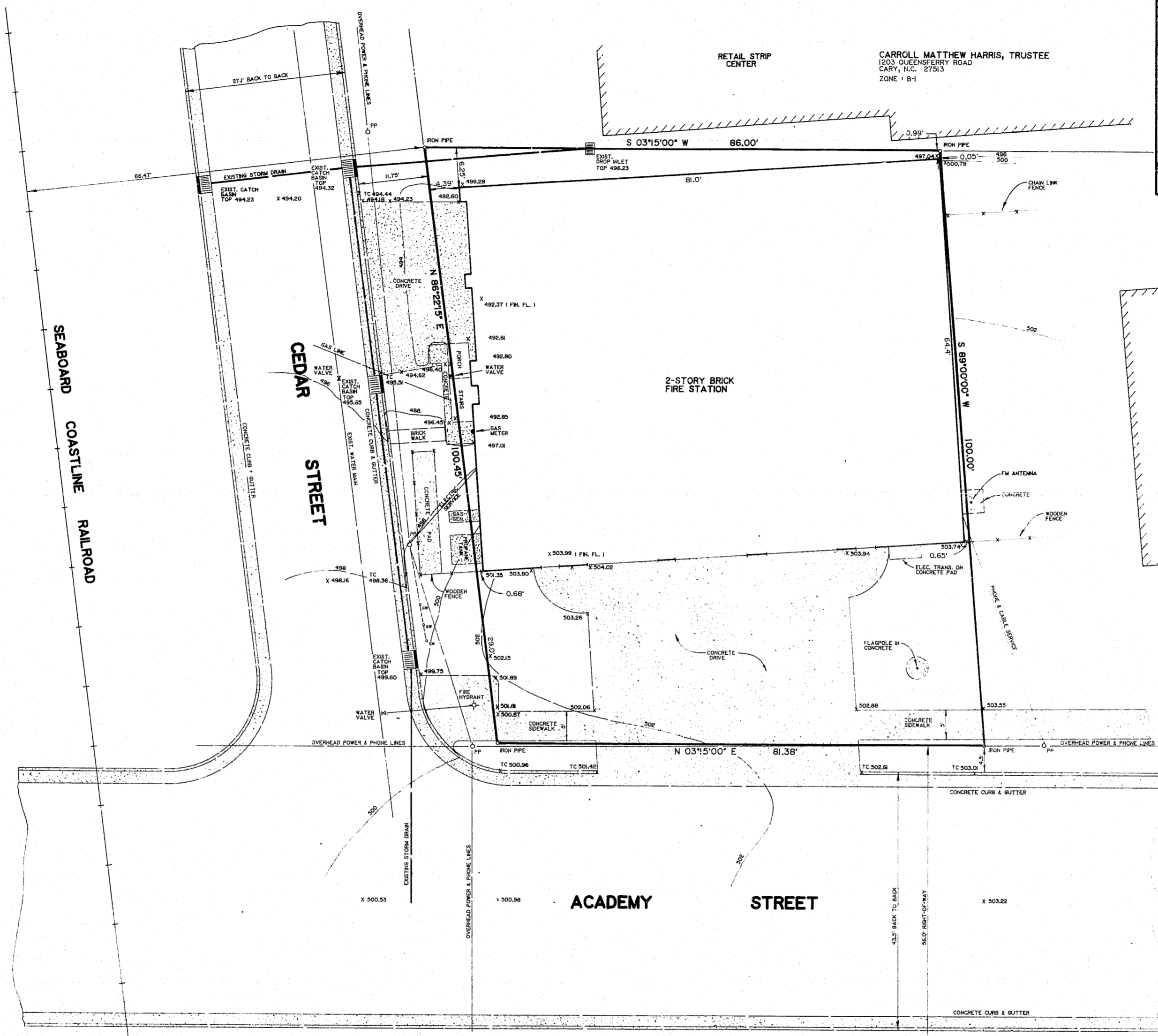


BENCHMARK
TOP OF "C.C.S. MON. " F-189 " LOCATED APPROXIMATELY 0.1 MILE ALONG CEDAR STREET EAST OF ITS INTERSECTION WITH ACADEMY STREET, ON NORTH SIDE OF STREET BETWEEN SOUTHERN AND SEABOARD COAST LINE RAILROAD LINES ELEV. 497.367 FEET



LOCATION MAP
NO SCALE



MARGUERITE T. GRAY
227 HILLSBORO STREET
CARY, N.C. 27513
ZONE "B-1"

LOT AREA—8,346.12 S.F. (0.19 AC.)

THE FIDELITY BANK
100 W. CHATHAM STREET
CARY, N.C. 27513
ZONE "B-1"

BANKING

SHEET NO
SDI
OF 2



R. R. Herring & Associates, Inc.
Engineers - Surveyors - Planners
2406 West Nash Street Wilson, North Carolina 27893 (919) 291-8887

TOWN OF CARY - FIRE DEPARTMENT
CARY, NORTH CAROLINA

SITE PLAN

Revision	Date	By	Date:	January 1991
			Scale:	Map No.
			1" = 10'	91-L-2217
			Sheet No. 1	of 1