

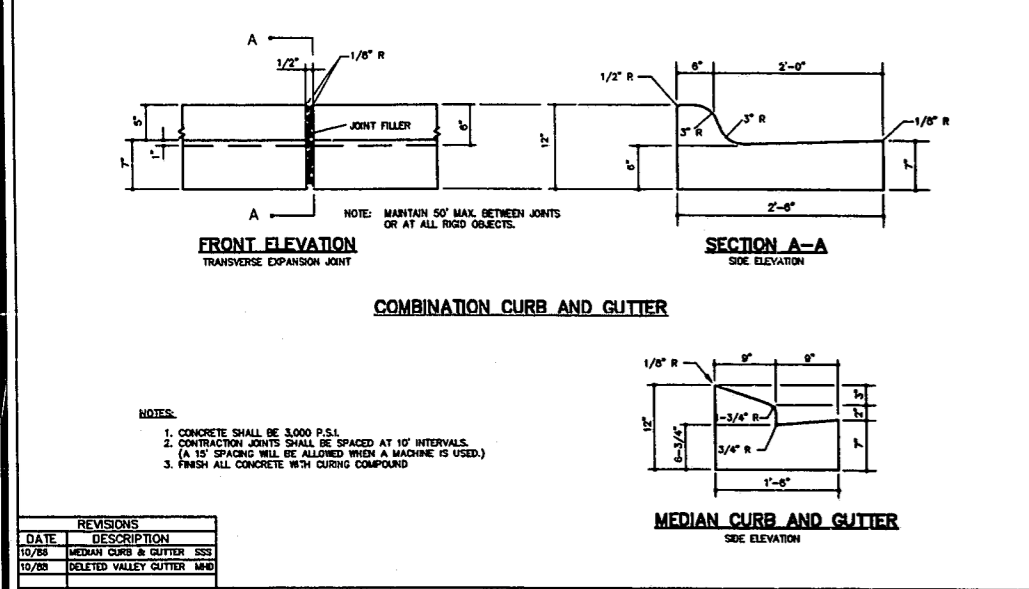
01-SP-03
APPROVED
19 0 21/01
TS 6/22/01



REVISIONS	DATE	DESCRIPTION

STANDARD CONCRETE CURB AND GUTTER

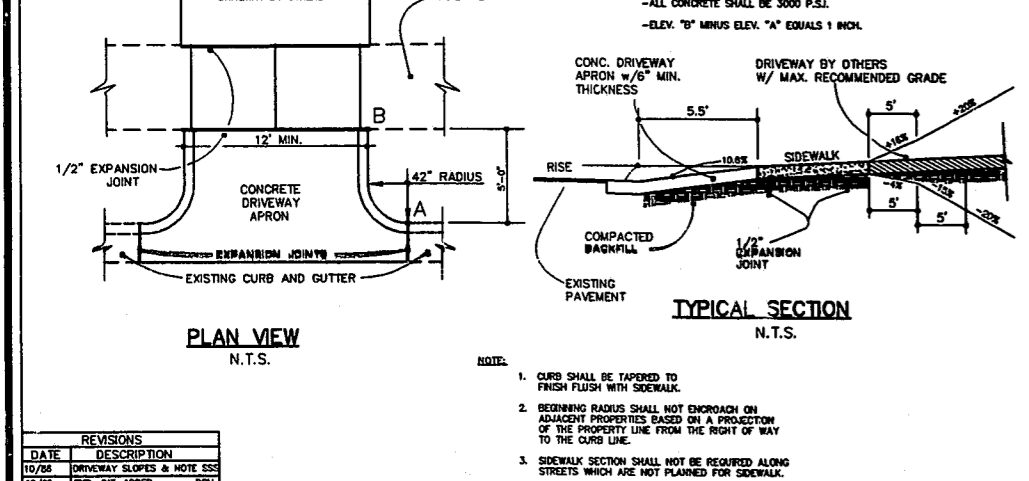
STD. No. 3.11



REVISIONS	DATE	DESCRIPTION

STANDARD WHEELCHAIR RAMP

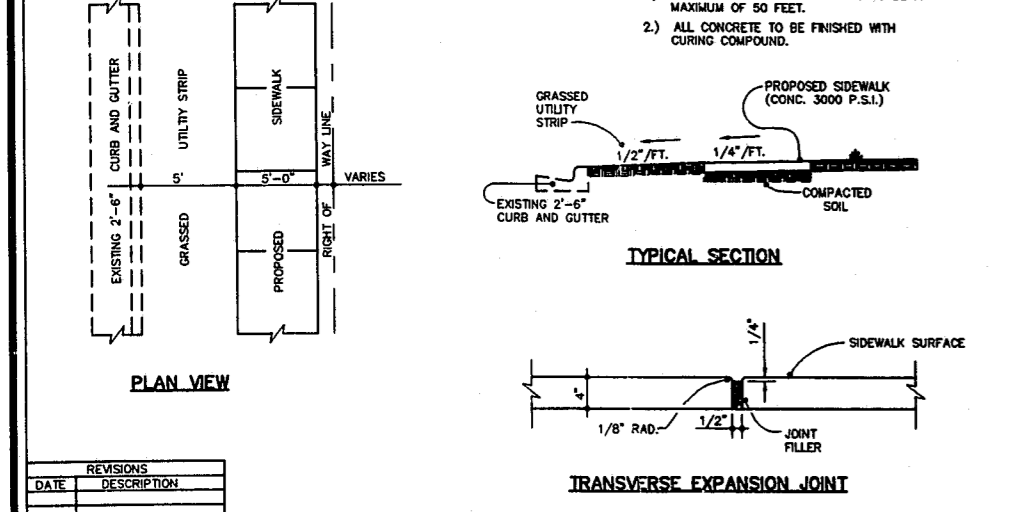
STD. No. 3.16



REVISIONS	DATE	DESCRIPTION

STANDARD DRIVEWAY APRON

STD. No. 3.15



REVISIONS	DATE	DESCRIPTION

STANDARD CONCRETE SIDEWALK

STD. No. 3.09

REVISIONS	DATE	DESCRIPTION

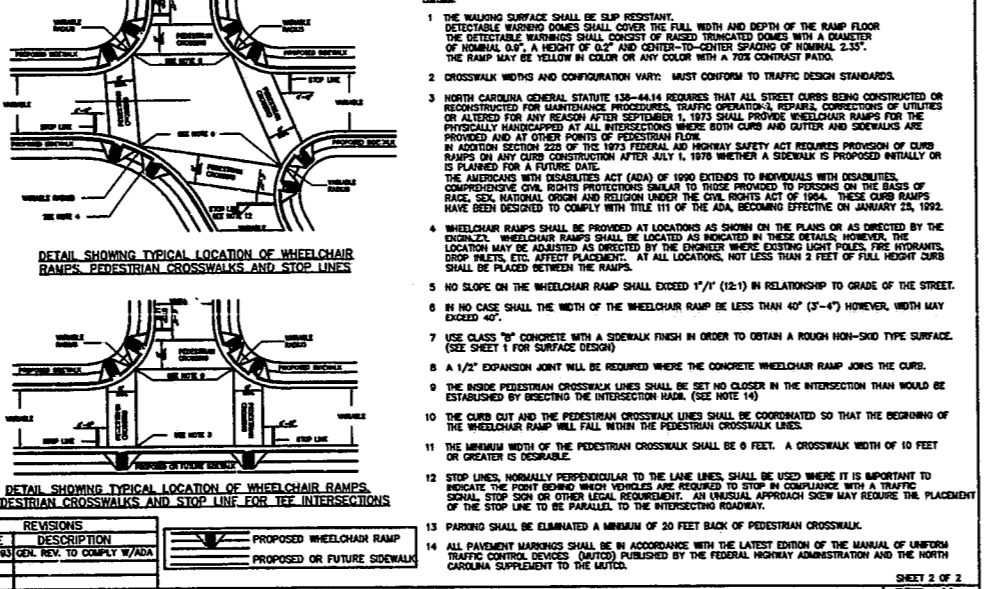
STANDARD WHEELCHAIR RAMP

STD. No. 3.18

REVISIONS	DATE	DESCRIPTION

STANDARD WHEELCHAIR RAMP

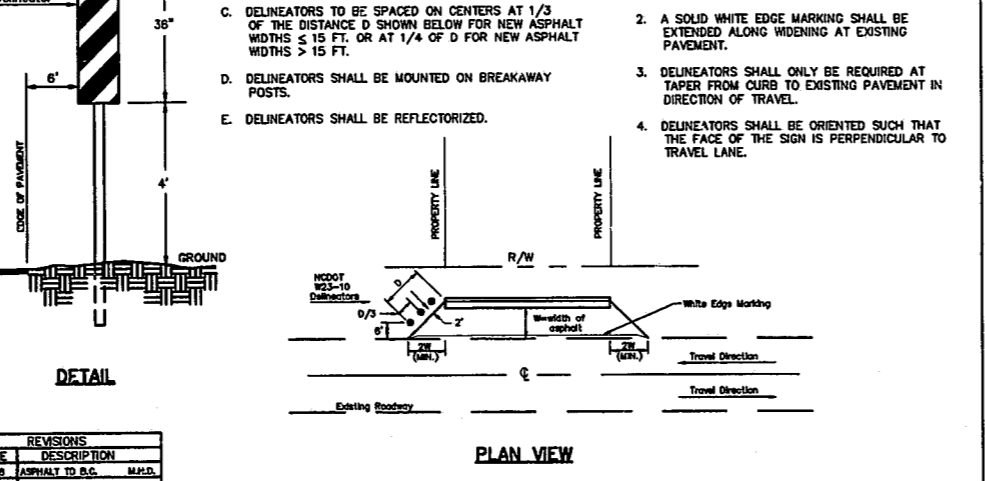
STD. No. 3.18



REVISIONS	DATE	DESCRIPTION

STANDARD WHEELCHAIR RAMP

STD. No. 3.16



REVISIONS	DATE	DESCRIPTION

STANDARD PAVEMENT WIDENING TAPER AND MARKINGS

STD. No. 3.17

CODE	DESCRIPTION
(C2)	PROPOSED APPROXIMATE 2" BITUMINOUS CONCRETE SURFACE COURSE, TYPE 1-2, AT AN AVERAGE RATE OF 110 LBS. PER SQUARE YARD PER 1" DEPTH IN EACH OF TWO LAYERS.
(D)	PROPOSED APPROXIMATE 2" BITUMINOUS CONCRETE BINDER COURSE, TYPE H AT AN AVERAGE RATE OF 110 LBS. PER SQUARE YARD PER 1" DEPTH.
(J)	PROPOSED 8" AGGREGATE BASE COURSE TO BE PLACED AND COMPACTED IN TWO 4" LAYERS.
(R)	2'-6" CONCRETE CURB AND GUTTER.
(RT)	1'-6" CONCRETE MEDIAN CURB AND GUTTER.
(T)	EARTH MATERIAL.

PAVEMENT SCHEDULE

NOTE: ROADWAY WILL BE LEFT 1" LOW.

PAVEMENT DESIGN SHALL BE COMPLETED & APPROVED BY TOWN OF CARY PRIOR TO PLACEMENT OF STONE BASE MATERIAL.

No.	Description	Date	By
1	LOC 1st REVIEW COMMENTS	4/29/01	LSA
2	FINAL COMMENTS	6/12/01	GAS

Designer	Scale	CAD File
W&R	NTS	SH76.DWG
Drawn By	Date	Sheet No.
GAS	01/28/01	6
Checked By	Job No.	
JEC	201024	