

GARY PARK
PARCEL SF = 110
ARCHITECTURAL GUIDELINES

Architectural diversity is very important to Gary Park. Architectural styles which are reflective of the local historically compatible architecture and communities are strongly encouraged and will include but are not limited to the following: Craftsman, Victorian, Colonial Revival, Prairie, Greek Revival, Neo-classical and Queen Anne. The overall streetscape will include various architectural styles also to accomplish this diversity.

Front door and porches: Main entrances visible and facing street shall have functional front porches.

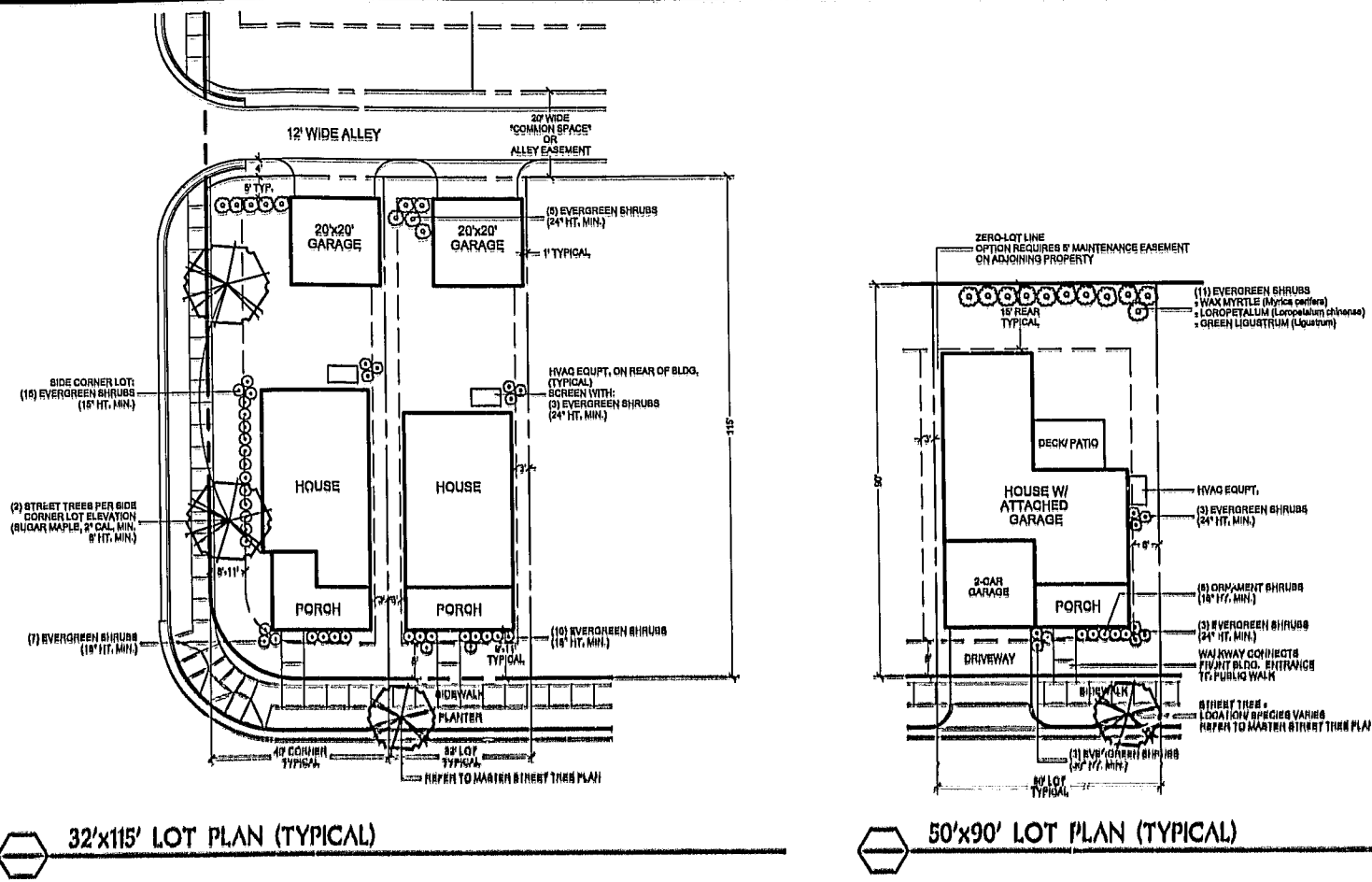
Walkways: Walkways (minimum of 36" in width) are required to extend from the front door to the street sidewalk in a perpendicular or curvilinear orientation. This may be waived on lots that require the house be set back a substantial distance from the street (i.e. cul-de-sacs) and where existing trees prohibit. Where the grade and length allow, steps and multiple landings within stringers in the walkway to street are encouraged. Stringers, brick paver detailing, textured concrete, etc. are also encouraged on all walkway steps. Walks shall be constructed of poured-in-place concrete, brick pavers, concrete pavers or stone. Patterns or alternate paving surfaces may be used if they are in keeping with the materials of the principal structure and design detailing. Extension of walk into "Tree Lawn" between public sidewalk and curb shall be natural colored concrete.

Exterior materials: Include architecturally compatible siding (fiber-cement or wood siding and shakes), brick and stone veneers. Exposed concrete masonry block units are not allowed. Prefabricated metal siding and buildings are not allowed. Synthetic stucco is not allowed.

Architectural consistency: All houses visible from a street including but not limited to corner lots and lots with rear property lines adjoining a street shall have all elevations visible from Public ROW finished consistently with the same detailing, colors, materials and attention as the front elevation.

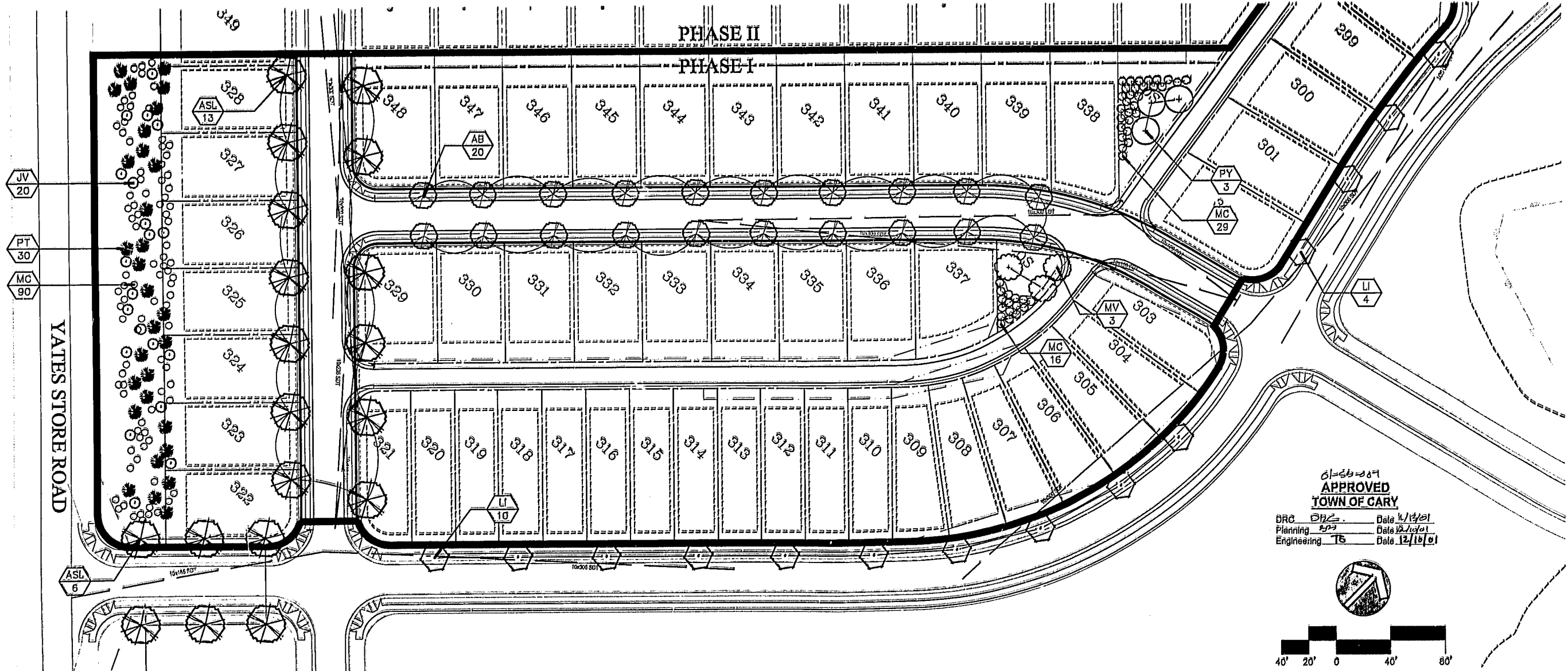
Exterior colors: Historical and architecturally compatible colors are required from a standard palette of pre-selected colors, as approved by Gary Park Architectural Review Board. Various exterior colors are encouraged on the same house (i.e. siding, siding in gable ends, dormers, doors, shutters, window sashes, etc.). Brick colors shall be in the red / brown range. Accent colors on doors, window sashes, upper gable ends and dormers, etc. are strongly encouraged.

Fencing: Whenever possible, alternatives to hard fencing should be used. The use of landscaping and plant material, or combinations of plants and short segments of fencing, or fencing hidden in plant material may achieve the sought-after goal. All fences visible from streets (front, side and rear yards) shall have additional landscape screening and shall be painted to match the house trim color. Chain-link fences are not allowed. Split rail or horse farm type horizontal railing fences are not allowed. Low stone and brick masonry walls are allowed and encouraged.



32'x115' LOT PLAN (TYPICAL)

50'x90' LOT PLAN (TYPICAL)



FOR CONSTRUCTION

REVISIONS
11/13/01

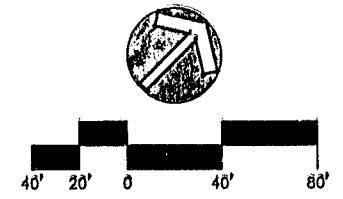
DRAWN ON CHECKED DB
SCALE DATE
1"=40' 9/17/01

PLANTING PLAN

FILE NO JOB NO
1536



APPROVED
TOWN OF GARY
BRC Date 11/13/01
Planning Date 12/10/01
Engineering TS Date 12/10/01



© JERRY TURNER & ASSOCIATES, INC. THIS DOCUMENT IS THE PROPERTY OF JERRY TURNER & ASSOCIATES. ALL RIGHTS ARE RESERVED AND ANY REPRODUCTION, REPLICATION, OR OTHER USE OF THIS DOCUMENT WITHOUT THE WRITTEN PERMISSION OF JERRY TURNER & ASSOCIATES IS EXPRESSLY PROHIBITED.

JERRY TURNER & ASSOCIATES, INC.
Landscape Architecture
Land Planning
Environmental Design
905 Jones Franklin Road
Raleigh, North Carolina 27606
(919) 851-7160 fax. (919) 851-7547
277 S.E. 5th Avenue
Delray Beach, Florida 33483
(561) 276-0453 fax. (561) 272-7593

**GARY PARK
SF-11
(PHASE I)**