

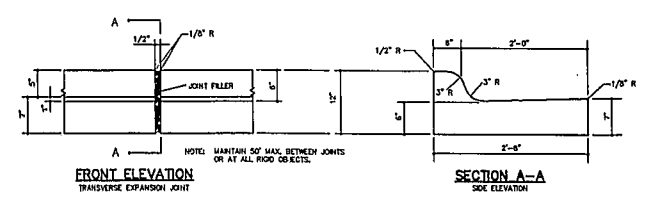
REVISIONS	
DATE	DESCRIPTION

REVISIONS	
DATE	DESCRIPTION

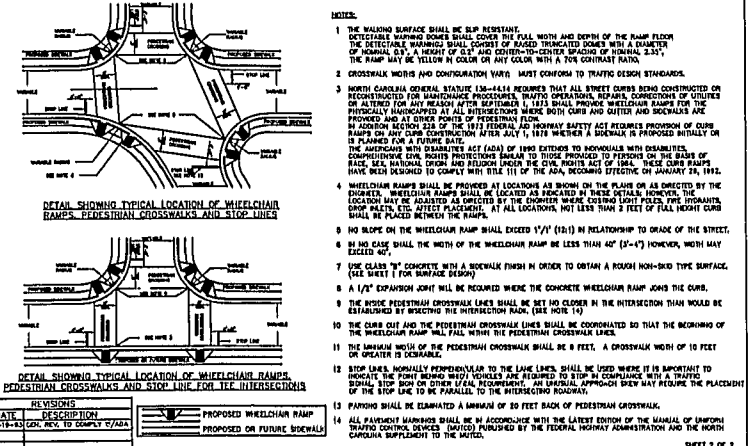
A.B.C. UNDER 2'-6" CURB & GUTTER

STANDARD WHEELCHAIR RAMP

SHEET 1 OF 3
STD. No. 3.16R



COMBINATION CURB AND GUTTER



DETAIL SHOWING TYPICAL LOCATION OF WHEELCHAIR RAMP, PEDESTRIAN CROSSWALKS AND STOP LINES

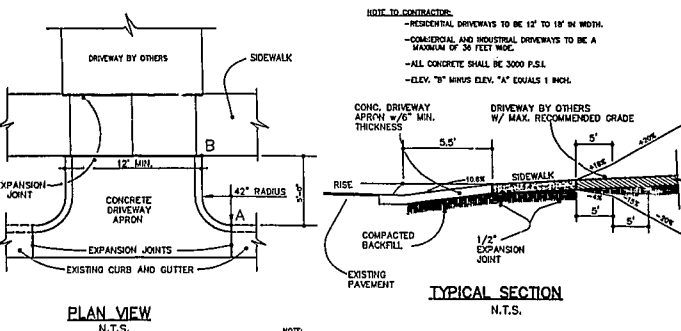
REVISIONS	
DATE	DESCRIPTION

REVISIONS	
DATE	DESCRIPTION

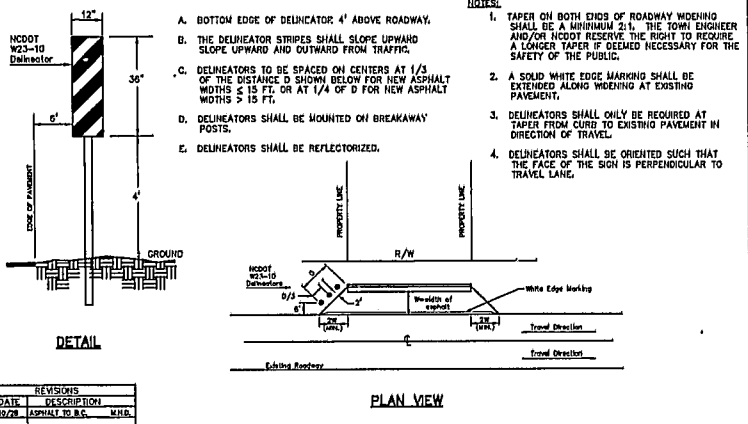
STANDARD CONCRETE CURB AND GUTTER

STANDARD WHEELCHAIR RAMP

SHEET 2 OF 3
STD. No. 3.16



TYPICAL SECTION



PLAN VIEW

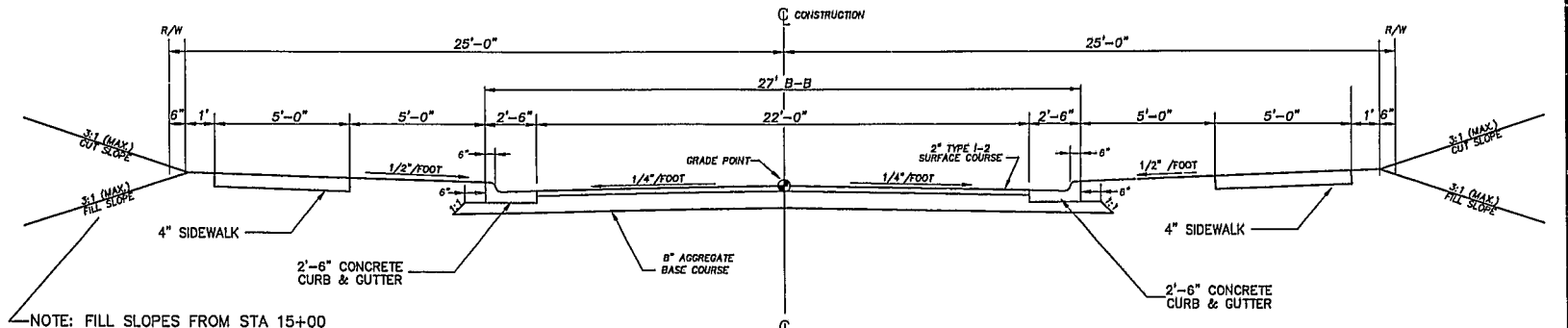
REVISIONS	
DATE	DESCRIPTION

REVISIONS	
DATE	DESCRIPTION

STANDARD DRIVEWAY APRON

STANDARD PAVEMENT WIDENING TAPER AND MARKINGS

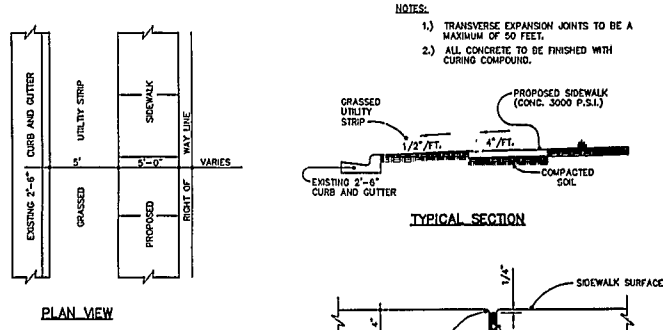
SHEET 3 OF 3
STD. No. 3.17



TYPICAL ROADWAY SECTION
R004 & R005

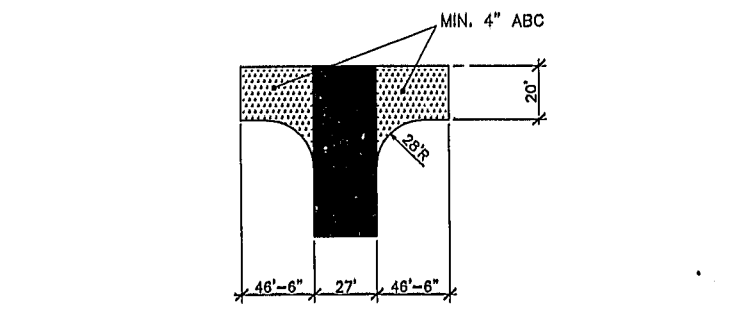
NOTE: FILL SLOPES FROM STA 15+00 TO STA 17+00 ON R004 SHALL BE 2:1

- NOTES:
1. THE OWNER MAY OPT TO LEAVE THE STREETS ONE INCH LOW UNTIL THE INFRASTRUCTURE IN THE SUBDIVISION IS COMPLETE. THIS OPTION WOULD REQUIRE THAT THE APPROVED PAVEMENT DESIGN BE INCREASED BY ONE-HALF INCH OF ASPHALT.
 2. PAVEMENT DESIGN SHALL BE SUBMITTED TO THE TOWN OF CARY FOR REVIEW AND APPROVAL PRIOR TO PLACEMENT OF ANY STONE BASE.



TYPICAL SECTION

TRANSVERSE EXPANSION JOINT



TEMPORARY FIRE DEPARTMENT TURNAROUND

REVISIONS	
DATE	DESCRIPTION

REVISIONS	
DATE	DESCRIPTION

STANDARD CONCRETE SIDEWALK

STD. No. 3.09

WITHERS & RAVENEL Engineering & Surveying, Inc.
111 MacKenan Drive Cary, N.C. 27511
919-469-3340 FAX 919-467-6008

Revisions			
No.	Description	Date	By
A	TOP 10% REVIEW COMMENTS	07/27/01	GAS
B	TOP 20% REVIEW COMMENTS	10/23/01	GAS
C	TOP FINAL APPROVAL	10/23/01	GAS

CARY PARK PARCEL SF-8a
CARY PARK P.U.D.

ROADWAY DETAILS

01-5b-003
APPROVED
TOWN OF CARY

Designer W&R	Scale NTS	CAD File SHT7.DWG
Drawn By GAS	Date 5/2/01	Sheet No.
Checked By JEC	Job No. 201135	8 of .

DRC 9/12/01 Date
Planning 10/23/01 Date 10/23/01
#14, 75 Date 10/10/01

K:\0101-13001\1301SHT8.DWG, 10/05/2001 11:19:13 AM, WITHERS & RAVENEL ENGINEERING & SURVEYING