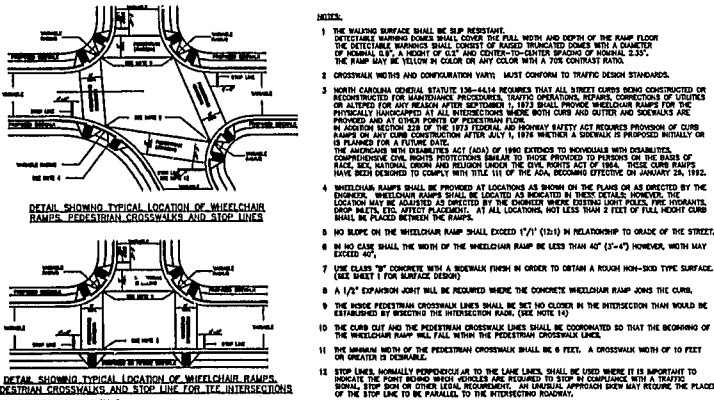
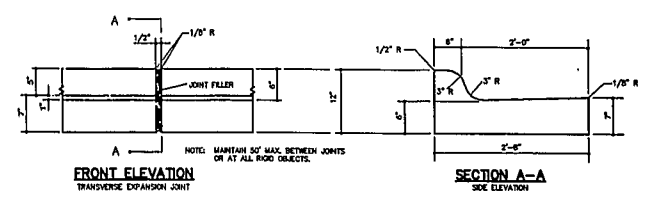


DATE	DESCRIPTION	STD. No.
		3.02

DATE	DESCRIPTION	STD. No.
		3.16R

A.B.C. UNDER 2'-6" CURB & GUTTER

STANDARD WHEELCHAIR RAMP

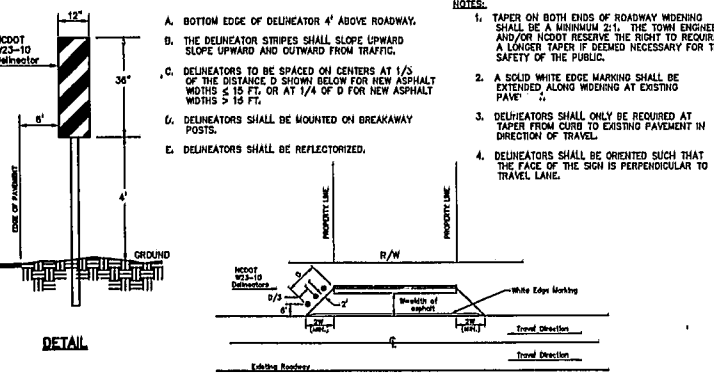
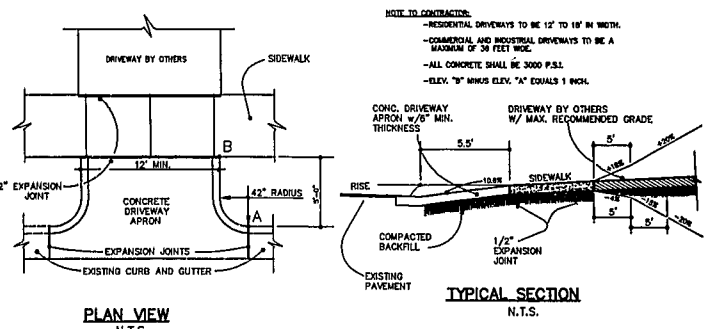


- NOTES:
1. CONCRETE SHALL BE 3000 P.S.I.
 2. CONTRACTION JOINTS SHALL BE SPACED AT 10' INTERVALS (1/2" SPACING, SEE A3.02 CURB & GUTTER 303)
 3. FINISH ALL CONCRETE WITH CURING COMPOUND

DATE	DESCRIPTION	STD. No.
		3.11

STANDARD CONCRETE CURB AND GUTTER

STANDARD WHEELCHAIR RAMP

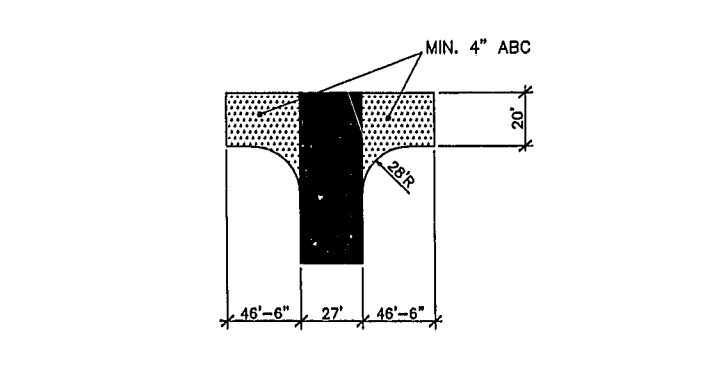
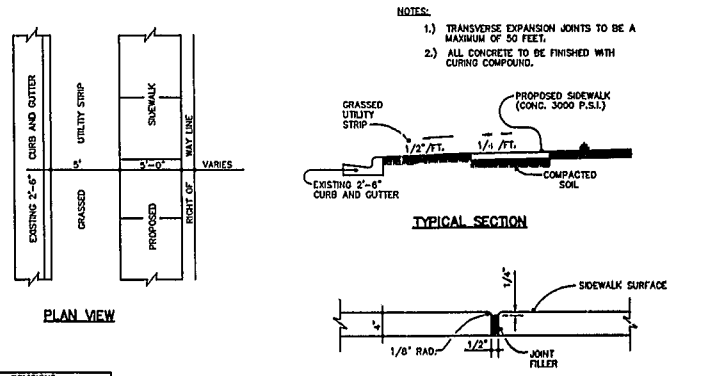


DATE	DESCRIPTION	STD. No.
		3.15

DATE	DESCRIPTION	STD. No.
		3.17

STANDARD DRIVEWAY APRON

STANDARD PAVEMENT WIDENING TAPER AND MARKINGS

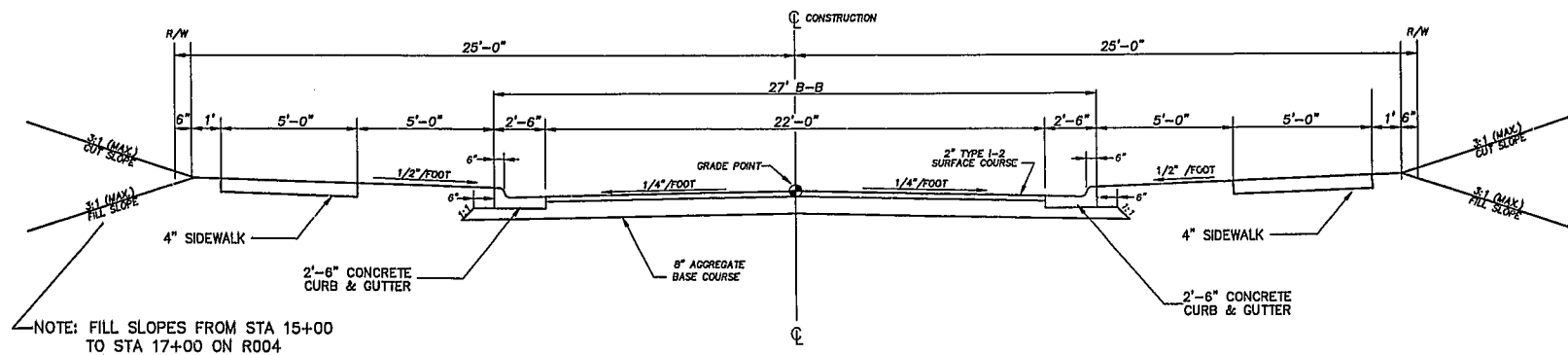


DATE	DESCRIPTION	STD. No.
		3.09

STANDARD CONCRETE SIDEWALK

DATE	DESCRIPTION	STD. No.
		3.17

TEMPORARY FIRE DEPARTMENT TURNAROUND



TYPICAL ROADWAY SECTION
R004 & R005
NTS

- NOTES:
1. THE OWNER MAY OPT TO LEAVE THE STREETS ONE INCH LOW UNTIL THE INFRASTRUCTURE IN THE SUBDIVISION IS COMPLETE. THIS OPTION WOULD REQUIRE THAT THE APPROVED PAVEMENT DESIGN BE INCREASED BY ONE-HALF INCH OF ASPHALT.
 2. PAVEMENT DESIGN SHALL BE SUBMITTED TO THE TOWN OF CARY FOR REVIEW AND APPROVAL PRIOR TO PLACEMENT OF ANY STONE BASE.



WITHERS & RAVENEL Engineering & Surveying, Inc.
111 MacKenan Drive Cary, N.C. 27511
919-469-3340 FAX 919-467-6008

Revisions	No.	Description	Date	By
A	1	100 1st REVIEW COMMENTS	6/9/01	GAS
B	2	100 2nd REVIEW COMMENTS	7/22/01	GAS
C	3	100 FINAL APPROVAL	10/5/01	GAS

CARY PARK PARCEL SF-8a
CARY PARK P.U.D.

ROADWAY DETAILS
01-SB-003
APPROVED
TOWN OF CARY

Design	W&R	Scale	NTS	CAD File
Drawn By	GAS	Date	5/2/01	Sheet No.
Checked By	VEG	Job No.	201135	8 of 8

DRC 9/13/01 Date
Planning 10/22/01 Date
11-14-75 Date: 10/10/01

K:\0101-130011351818.DWG, 10/05/2001 11:18:13 AM, WITHERS & RAVENEL ENGINEERING & SURVEYING