

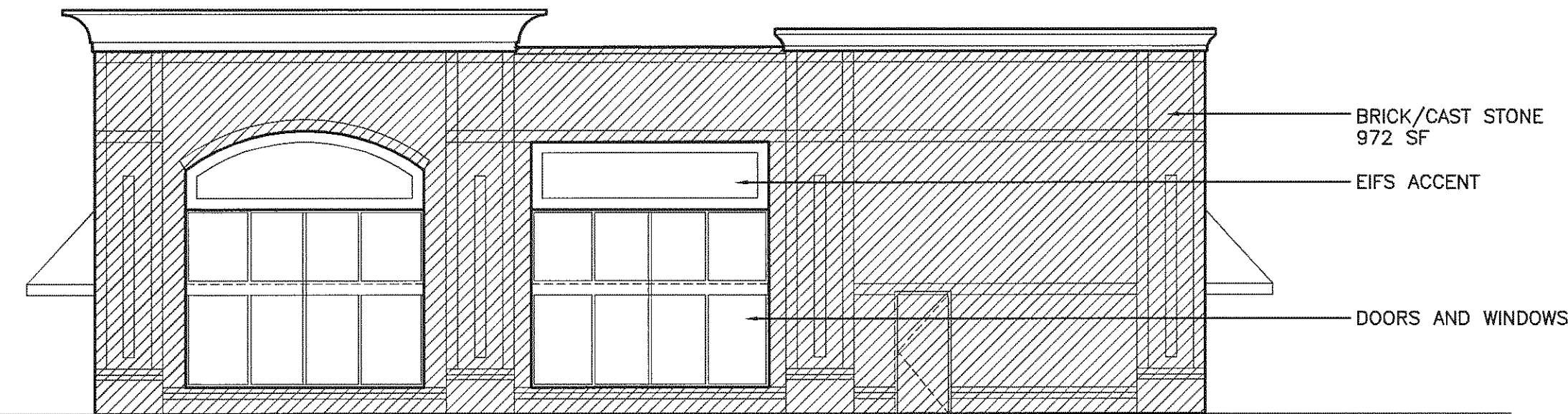
# MATERIALS OVERLAY

TOTAL FACADE AREA	2457 SF
AREA OF WINDOWS AND DOORS (-)	818 SF
TOTAL WALL AREA FOR MATERIAL CALCULATIONS	1639 SF
REQUIRED BRICK/CAST STONE COMMERCIAL (x.75) =	1229 SF MIN.
BRICK/CAST STONE AS SHOWN ON ELEVATION	1229 SF



**C3** EAST BUILDING ELEVATION  
1/8"=1'-0"

TOTAL FACADE AREA	1493 SF
AREA OF WINDOWS AND DOORS (-)	292 SF
TOTAL WALL AREA FOR MATERIAL CALCULATIONS	1201 SF
REQUIRED BRICK/CAST STONE COMMERCIAL (x.75) =	901 SF MIN.
ACTUAL BRICK/CAST STONE AS SHOWN ON ELEVATION	972 SF



**B2** NORTH BUILDING ELEVATION  
1/8"=1'-0"

TOTAL FACADE AREA	1492 SF
AREA OF WINDOWS AND DOORS (-)	158 SF
TOTAL WALL AREA FOR MATERIAL CALCULATIONS	1334 SF
REQUIRED BRICK/CAST STONE COMMERCIAL (x.75) =	1001 SF MIN.
ACTUAL BRICK/CAST STONE AS SHOWN ON ELEVATION	1256 SF



**B4** SOUTH BUILDING ELEVATION  
1/8"=1'-0"

TOTAL FACADE AREA	2376 SF
AREA OF WINDOWS AND DOORS (-)	818 SF
TOTAL WALL AREA FOR MATERIAL CALCULATIONS	1558 SF
REQUIRED BRICK/CAST STONE COMMERCIAL (x.75) =	1169 SF MIN.
ACTUAL BRICK/CAST STONE AS SHOWN ON ELEVATION	1191 SF

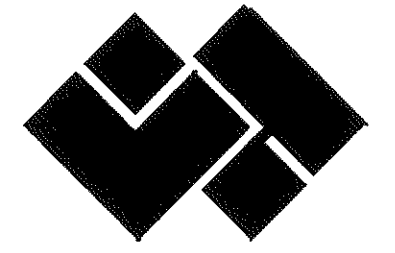


**A3** WEST BUILDING ELEVATION  
1/8"=1'-0"

07-SP-068  
**APPROVED**  
TOWN OF CARY

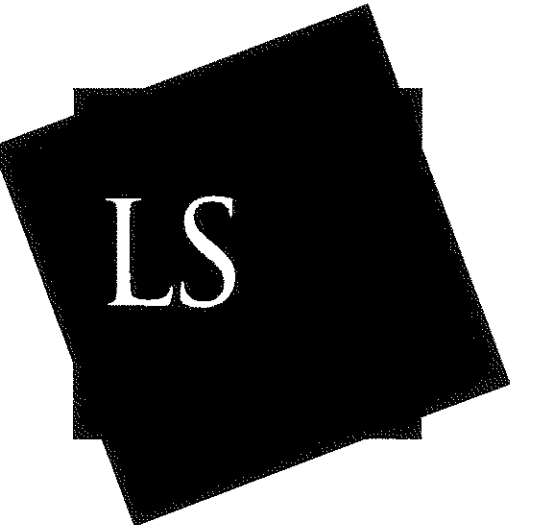
Approved by: DEC Date: 9/20/07  
 Planning: KAH Date: 11/20/07  
 Engineering: TS Date: 11-28-07

CARY  
PARK  
TOWN  
CENTER



LINCOLN  
HARRIS

BUILDING A-3  
1030 GREEN LEVEL TO DURHAM RD.  
CARY, NC 27519



**LS3P ASSOCIATES LTD.**  
434 FAYETTEVILLE STREET, SUITE 1700  
RALEIGH, NORTH CAROLINA 27601-1701  
TEL. 919.829.2700 FAX 919.829.2730  
WWW.LS3P.COM

NOT FOR  
CONSTRUCTION

MEMBERS OF THE AMERICAN INSTITUTE OF ARCHITECTS  
COPYRIGHT ALL RIGHTS RESERVED  
PRINTED OR ELECTRONIC DRAWINGS AND  
DOCUMENTATION MAY NOT BE REPRODUCED  
IN ANY FORM WITHOUT WRITTEN PERMISSION  
FROM LS3P ASSOCIATES LTD.

REVISIONS:

PROJECT:  
DATE:  
DRAWN BY: meb  
CHECKED BY:

MATERIALS  
OVERLAY

**A202a**

SOLUTIONS THROUGH LISTENING  
SERVICE BY DESIGN