

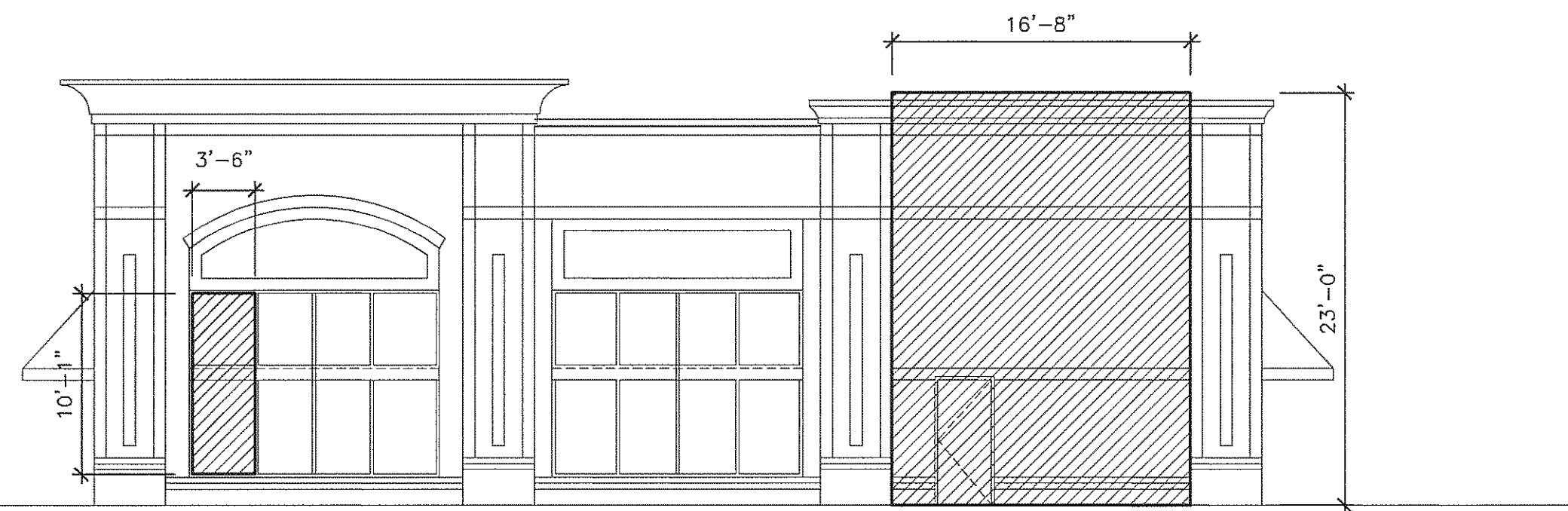
# PROPORTION OVERLAY

BUILDING SEGMENT RATIO: HEIGHT 24 FT 0 IN WIDTH 16 FT 0 IN  
 WINDOW AND DOOR RATIO: HEIGHT 10 FT 1 IN WIDTH 3 FT 1 IN



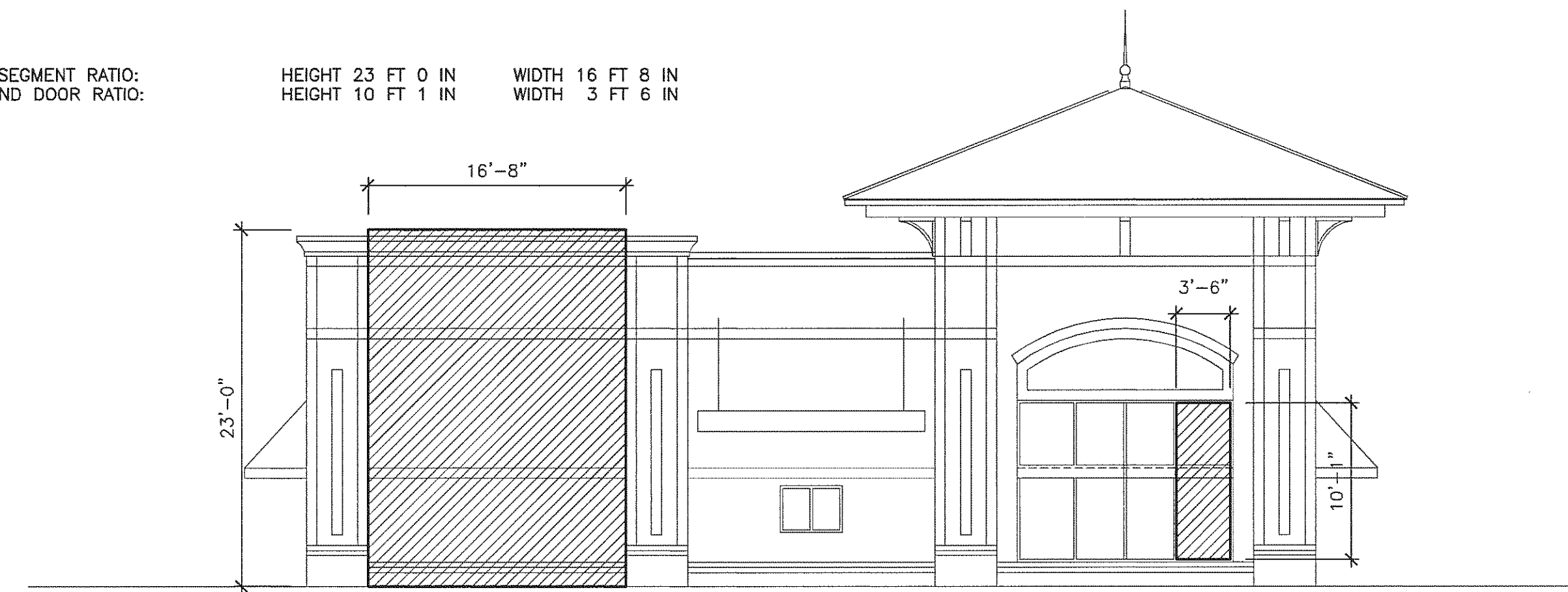
**C3** EAST BUILDING ELEVATION  
 1/8"=1'-0"

BUILDING SEGMENT RATIO: HEIGHT 23 FT 0 IN WIDTH 16 FT 8 IN  
 WINDOW AND DOOR RATIO: HEIGHT 10 FT 1 IN WIDTH 3 FT 6 IN



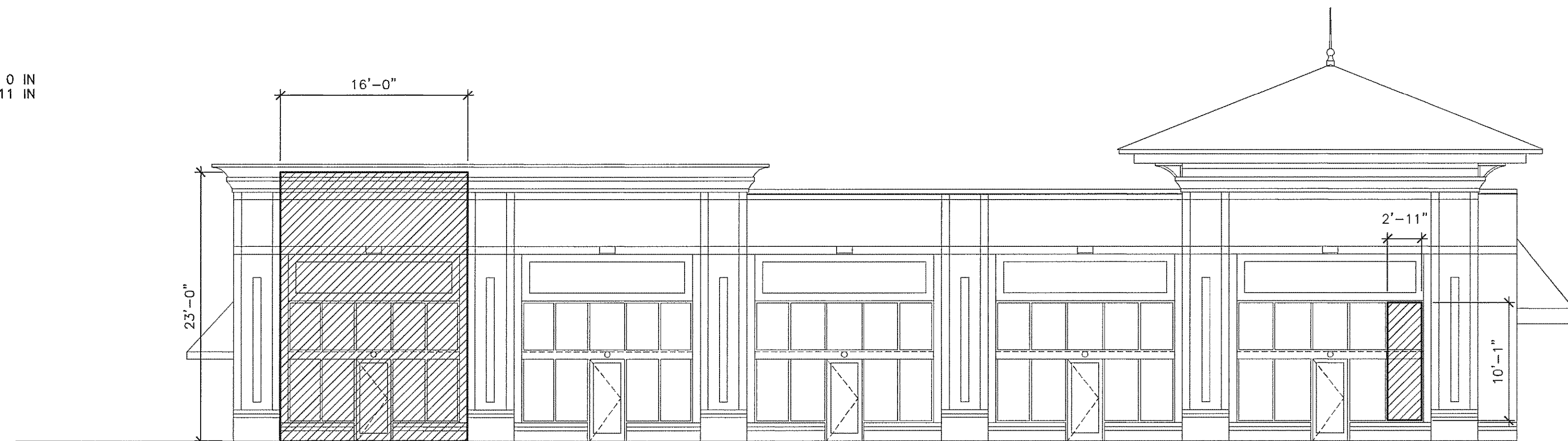
**B2** NORTH BUILDING ELEVATION  
 1/8"=1'-0"

BUILDING SEGMENT RATIO: HEIGHT 23 FT 0 IN WIDTH 16 FT 8 IN  
 WINDOW AND DOOR RATIO: HEIGHT 10 FT 1 IN WIDTH 3 FT 6 IN



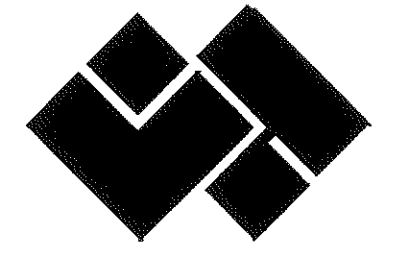
**B4** SOUTH BUILDING ELEVATION  
 1/8"=1'-0"

BUILDING SEGMENT RATIO: HEIGHT 23 FT 0 IN WIDTH 16 FT 0 IN  
 WINDOW AND DOOR RATIO: HEIGHT 10 FT 1 IN WIDTH 2 FT 11 IN



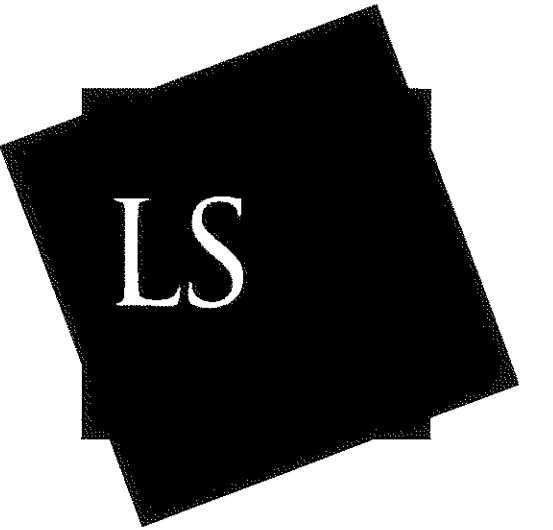
**A3** WEST BUILDING ELEVATION  
 1/8"=1'-0"

CARY  
 PARK  
 TOWN  
 CENTER

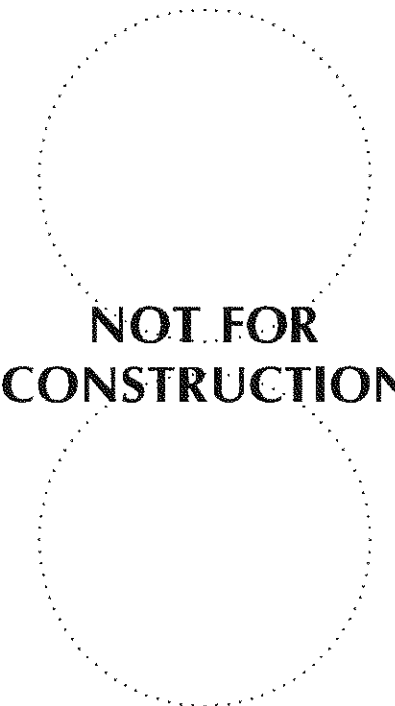


LINCOLN  
 HARRIS

BUILDING A-3  
 1030 GREEN LEVEL TO DURHAM RD.  
 CARY, NC 27519



LS3P ASSOCIATES LTD.  
 434 FAYETTEVILLE STREET, SUITE 1700  
 RALEIGH, NORTH CAROLINA 27601-1701  
 TEL. 919.829.2700 FAX 919.829.2730  
 WWW.LS3P.COM



MEMBERS OF THE AMERICAN INSTITUTE OF ARCHITECTS  
 COPYRIGHT ALL RIGHTS RESERVED  
 PRINTED OR ELECTRONIC DRAWINGS AND  
 DOCUMENTATION MAY NOT BE REPRODUCED  
 IN ANY FORM WITHOUT WRITTEN PERMISSION  
 FROM LS3P ASSOCIATES LTD.

REVISIONS:

PROJECT:  
 DATE:  
 DRAWN BY: meb  
 CHECKED BY:

PROPORTION  
 OVERLAY

A202d

SOLUTIONS THROUGH LISTENING  
 SERVICE BY DESIGN

07-SP-068  
 APPROVED  
 TOWN OF CARY

Approved by: DRC Date: 9/20/07  
 Planning: KAH Date: 11/20/07  
 Engineering: TS Date: 11-20-07