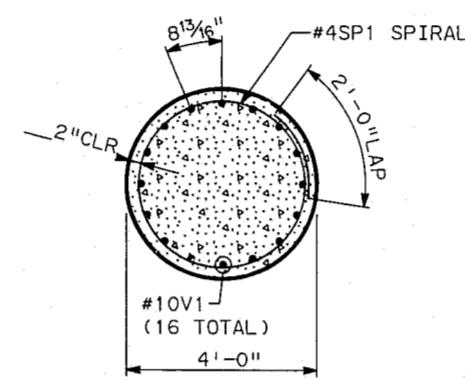
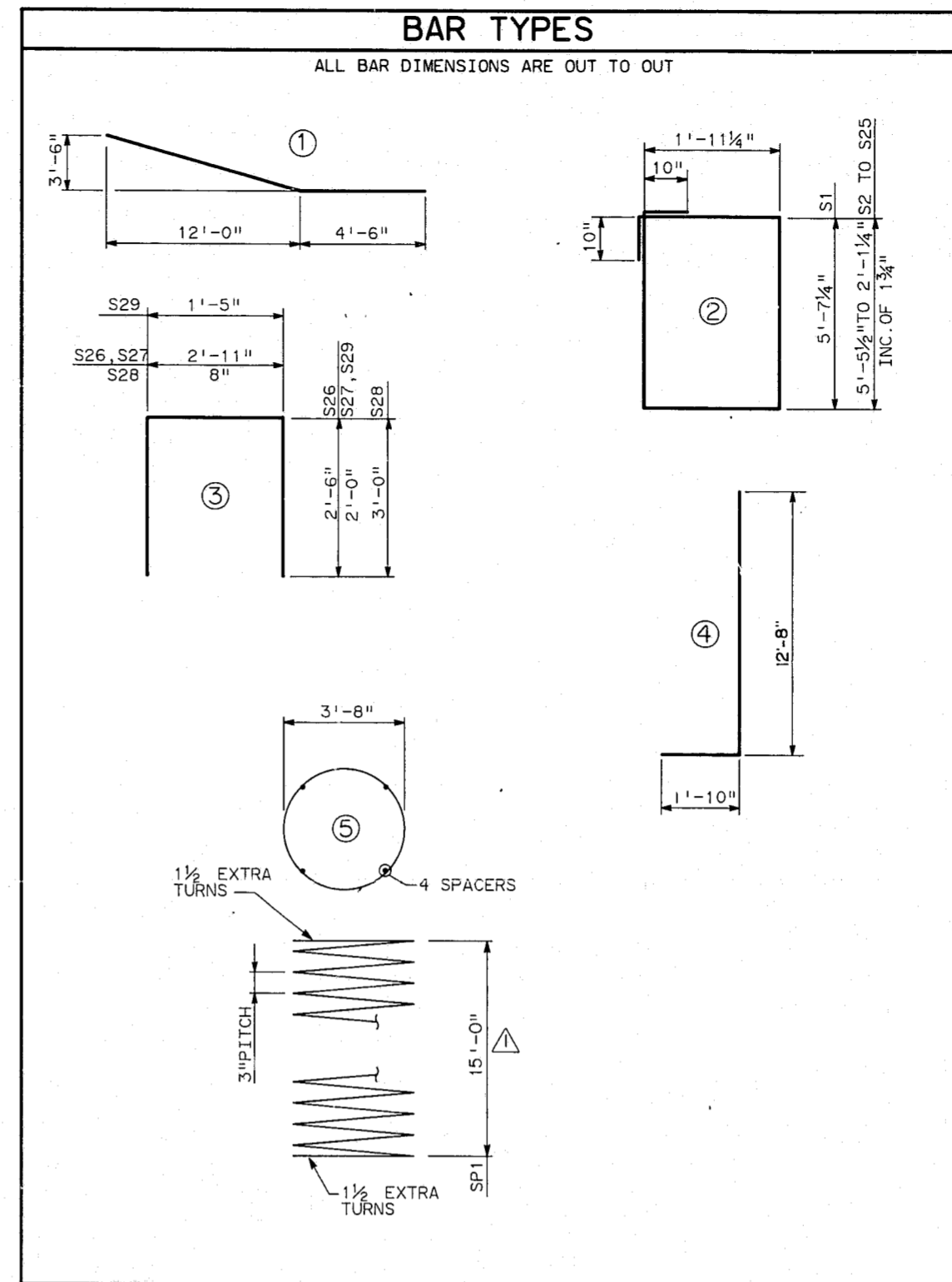


ELEVATION



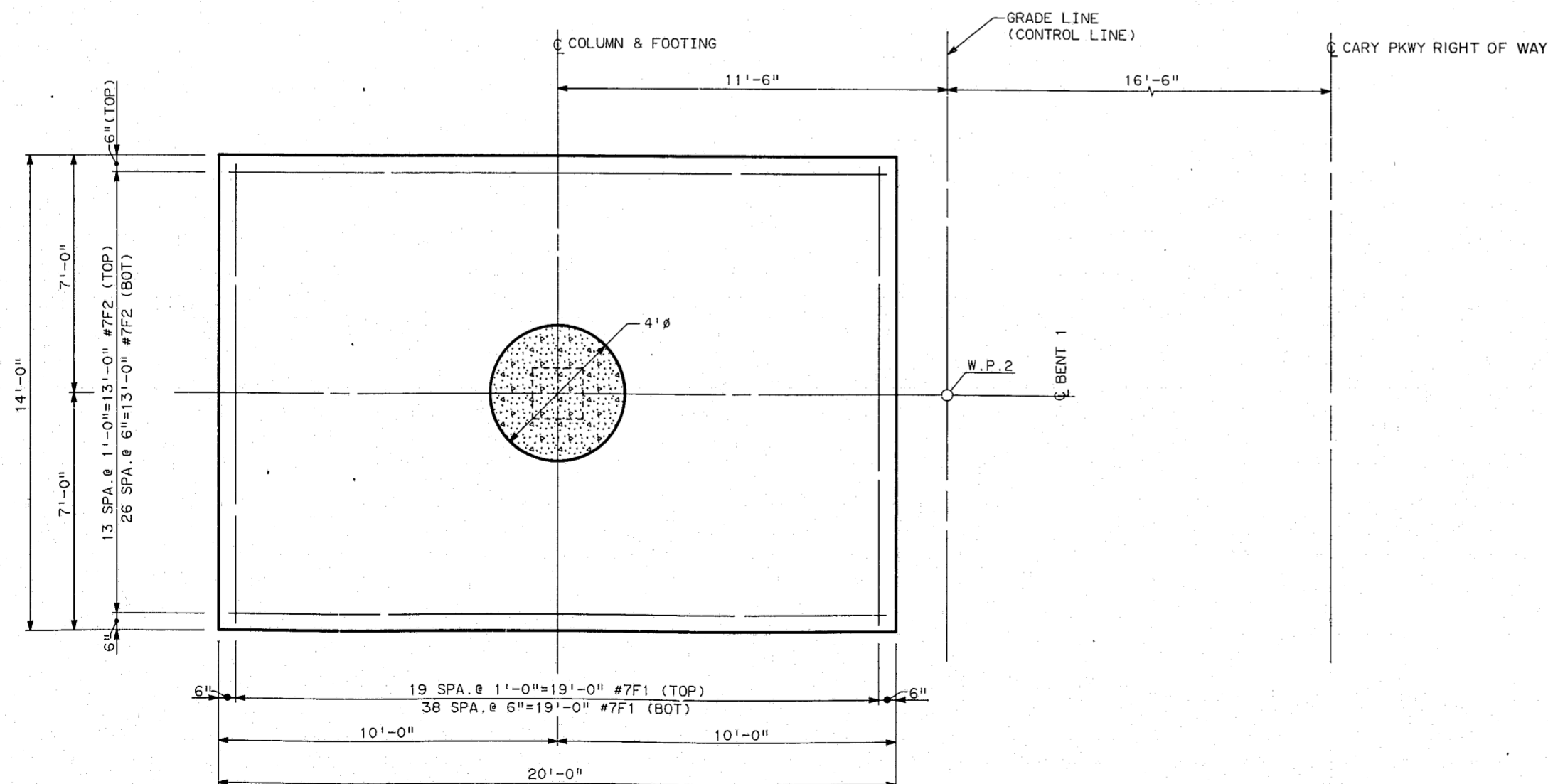
SECTION A-A



BAR TYPES

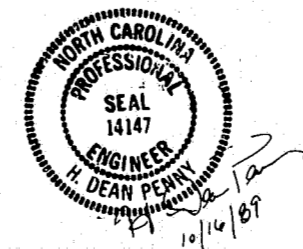
ALL BAR DIMENSIONS ARE OUT TO OUT

BENT 1						
BAR	NO.	SIZE	TYPE	LENGTH	WEIGHT	
B1	16	11	STR	28'-8"	2437	
B2	2	8	STR	28'-8"	153	
B3	2	8	STR	27'-5"	146	
B4	2	8	STR	20'-5"	109	
B5	2	8	STR	13'-5"	72	
B6	8	8	1	17'-0"	363	
B7	8	5	STR	3'-0"	25	
B8	4	4	STR	3'-0"	8	
B9	12	4	STR	2'-8"	21	
B10	12	4	STR	2'-4"	19	
S1	12	5	2	16'-9"	210	
S2	96	5	2	16'-5 1/2"	824	
S25	96	5	2	9'-9"	488	
S26	4	4	3	7'-11"	21	
S27	22	4	3	6'-11"	102	
S28	8	4	3	6'-8"	36	
S29	22	4	3	5'-5"	80	
F1	59	7	STR	13'-6"	1628	
F2	41	7	STR	19'-6"	1634	
D1	16	10	4	14'-6"	998	
V1	16	10	STR	60'-4"	1400	
SP1	1	-	6	717'-8"	479	
REINFORCING STEEL				LBS.	10,774	
SPIRAL COLUMN REINFOR.				LBS.	479	
CLASS A CONCRETE BREAKDOWN						
POUR 1				41.5		
POUR 2				6.9		
POUR 3				17.3		
TOTAL				CY	65.7	
FOUNDATION EXCAVATION				CY	174	



FOOTING PLAN

- INTERIOR BENT NOTES
- REINFORCING STEEL IN THE CAP MAY BE SHIFTED AS REQUIRED TO CLEAR COLUMN OR FOOTING REINFORCING.
 - REINFORCING STEEL SHALL HAVE 2" COVER AND FOOTING REINFORCEMENT SHALL HAVE 3" COVER UNLESS OTHERWISE NOTED.
 - EPOXY PROTECTIVE COATING SHALL BE APPLIED TO COAT ALL SURFACE AREAS OF THE TOP OF CAP, INCLUDING BUILDUPS AND CHAMFERS. THE AREA UNDER THE ELASTOMETRIC BEARING SHALL NOT BE COATED. SEE SPECIAL PROVISIONS.
 - THE TOP SURFACE OF THE CAP SHALL BE CURED IN ACCORDANCE WITH THE SPECIFICATIONS EXCEPT THE MEMBRANE CURING COMPOUND METHOD SHALL NOT BE USED.
 - FOOTINGS SHALL BE CARRIED A MINIMUM OF 12" INTO ROCK WITH THE MINIMUM THICKNESS AS SHOWN ON THE PLANS. COMPUTED FOUNDATION LOAD 5.0 TONS/S.F.
 - FOR SPIRAL COLUMN REINFORCING STEEL, SEE SPECIAL PROVISIONS.
 - DETAILED DRAWINGS FOR FALSEWORK AND FORMS FOR HAMMERHEAD BENTS, SHALL BE SUBMITTED. SEE SHEET S-N.



DEPARTMENT

ENGINEERING
CARY, N.C.

PROJECT: **CARY PARKWAY OVER BLACK CREEK SUBSTRUCTURE BENT 1**

DATE: 07/05/88

SCALE:

SHEET OF: S18 / 26

DRAWN BY: LSJ

REVISIONS:

Δ	REVISED COLUMN HEIGHT AND QUANTITIES DUE TO NEW VERTICAL ALIGNMENT. (2/1/90)
---	--