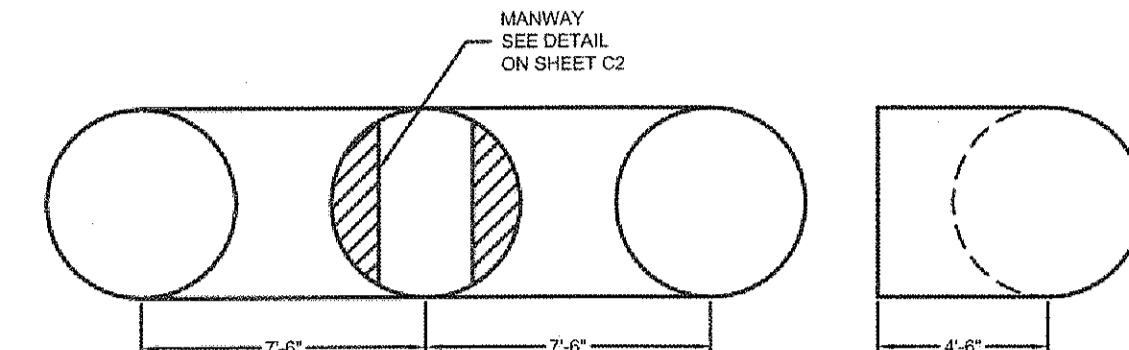


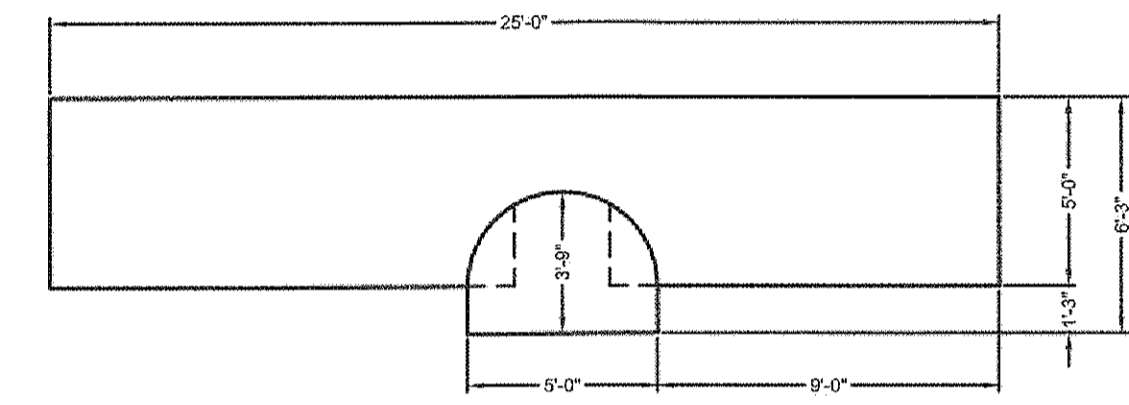
PLAN VIEW



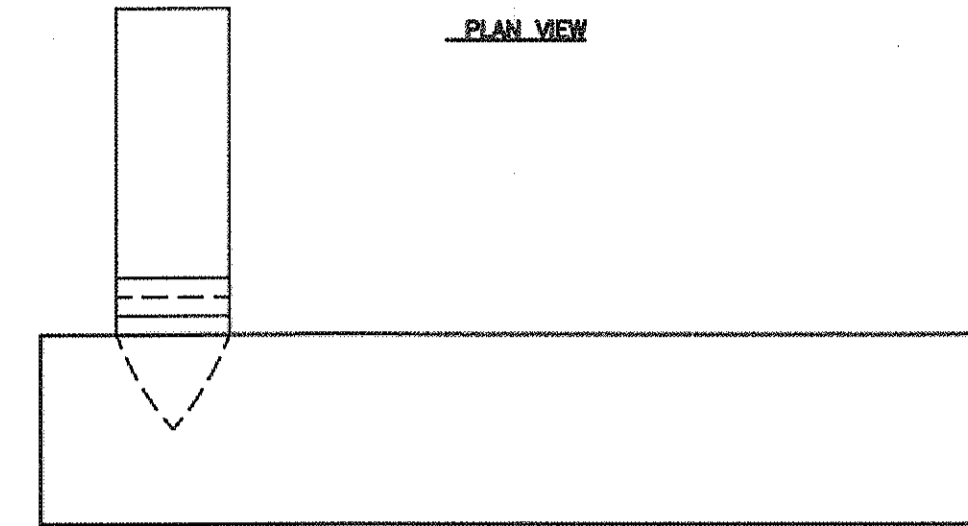
ELEVATION VIEW

RIGHT VIEW

PART A
1" = 10'



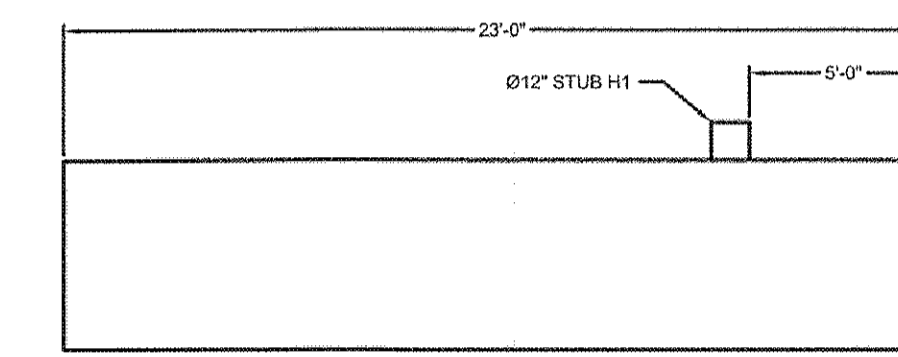
PLAN VIEW



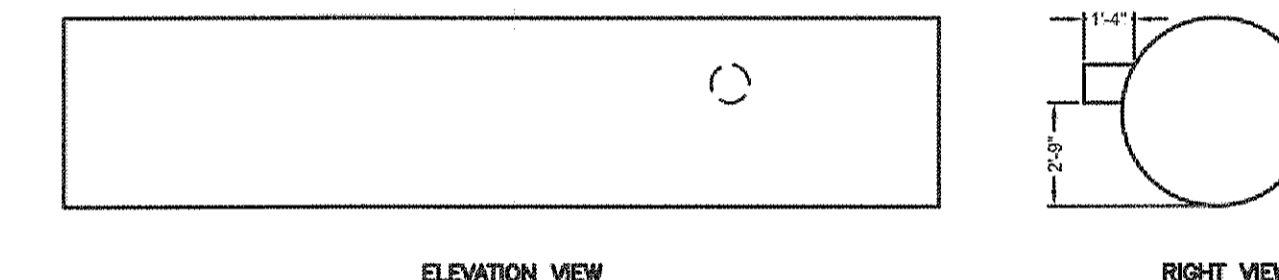
ELEVATION VIEW

LEFT VIEW

PART B
1" = 10'



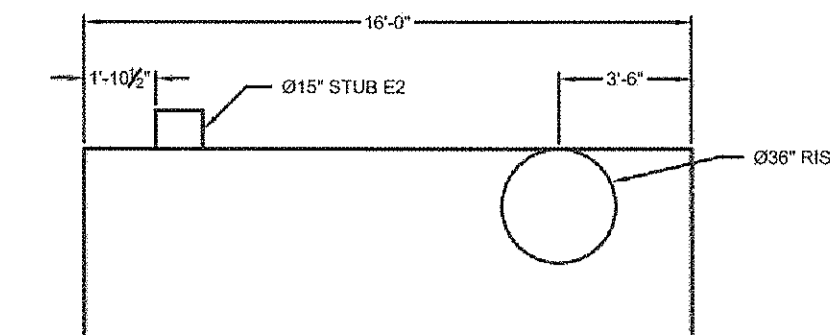
PLAN VIEW



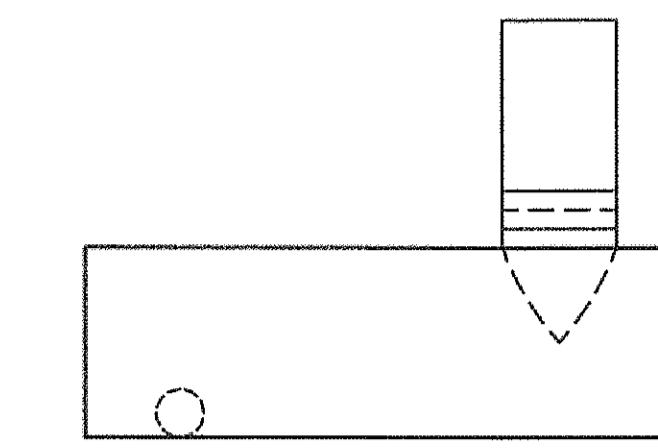
ELEVATION VIEW

RIGHT VIEW

PART C
1" = 10'



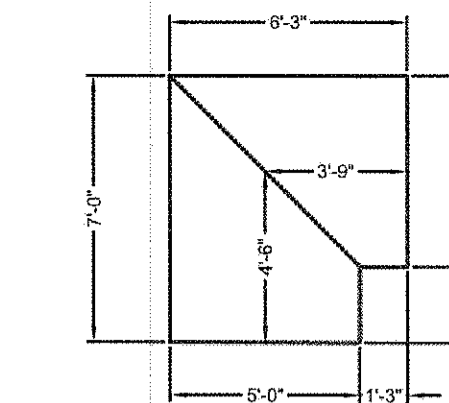
PLAN VIEW



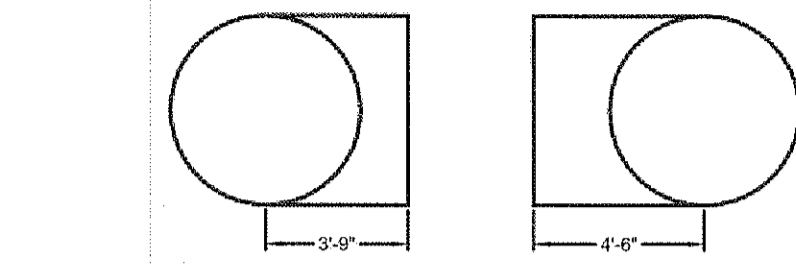
ELEVATION VIEW

RIGHT VIEW

PART D
1" = 10'



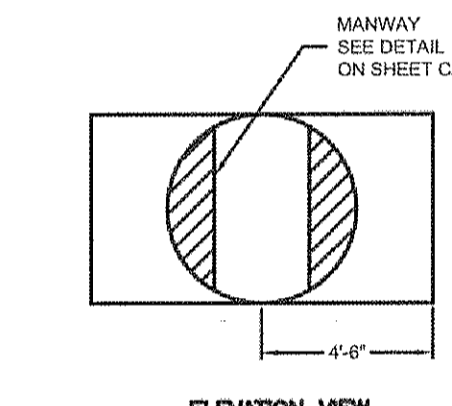
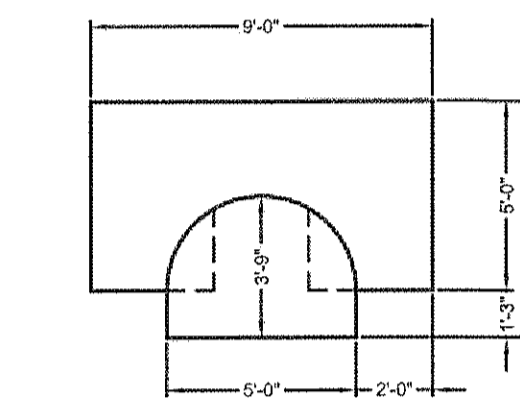
PLAN VIEW



ELEVATION VIEW

RIGHT VIEW

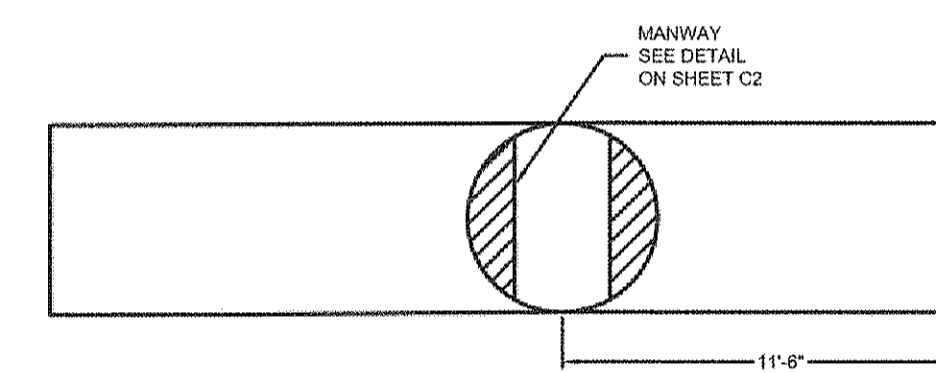
PARTS E & K
1" = 10'



ELEVATION VIEW

RIGHT VIEW

PART F
1" = 10'



ELEVATION VIEW

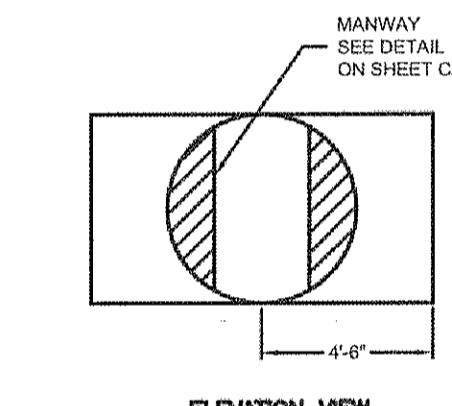
RIGHT VIEW

PART G
1" = 10'



ELEVATION VIEW

PART H
1" = 10'

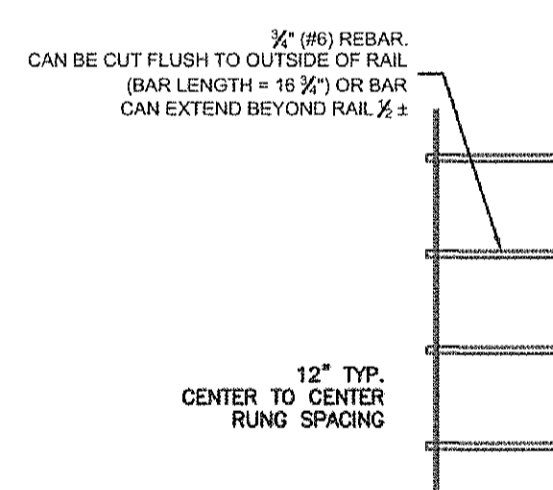


ELEVATION VIEW

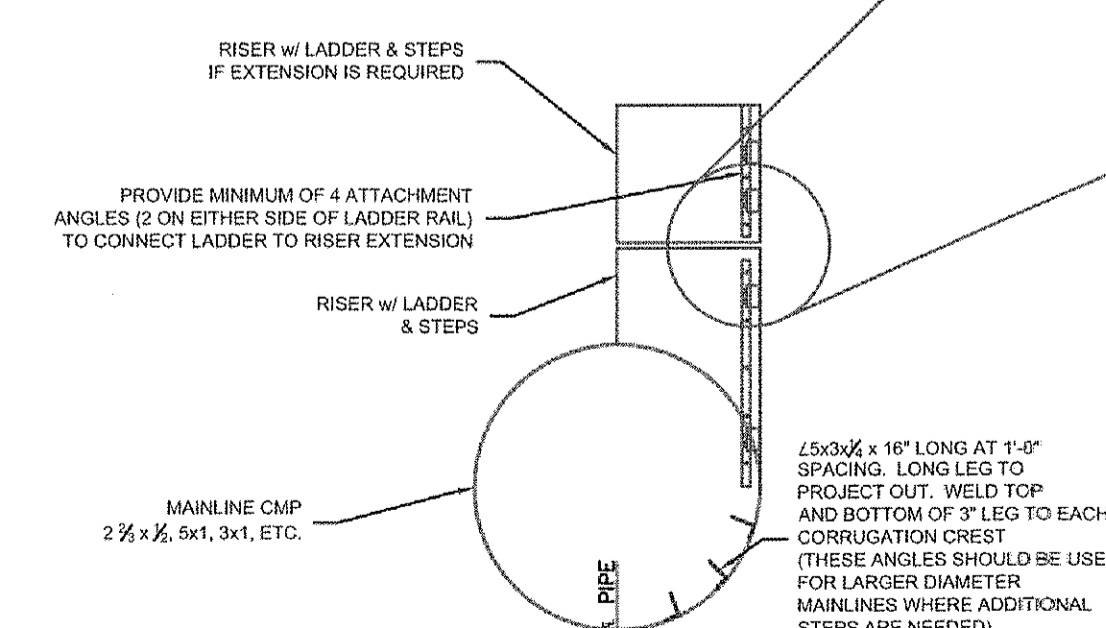
RIGHT VIEW

PART I
1" = 10'

NOTE: THIS DRAWING IS INTENDED TO APPLY TO LADDERS INSTALLED IN RISERS HAVING A DIAMETER OF 30" OR LARGER. DUE TO SPACE CONSTRAINTS AND LIMITED ACCESSIBILITY, THE PRACTICALLY AND SUITABILITY OF UTILIZING RISERS SMALLER THAN 30" DIAMETER AND/OR INCORPORATING LADDERS IN THESE SMALLER DIAMETER RISERS SHOULD BE ADDRESSED BY THE OWNER AND PROJECT ENGINEER.



STANDARD LADDER DETAIL
SCALE: N.T.S.



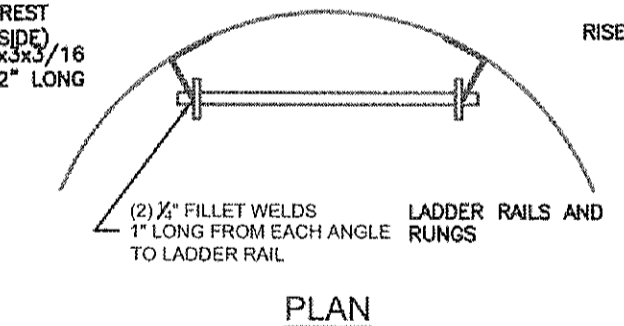
SECTION A-A

RIDER LADDER DETAIL
SCALE: N.T.S.

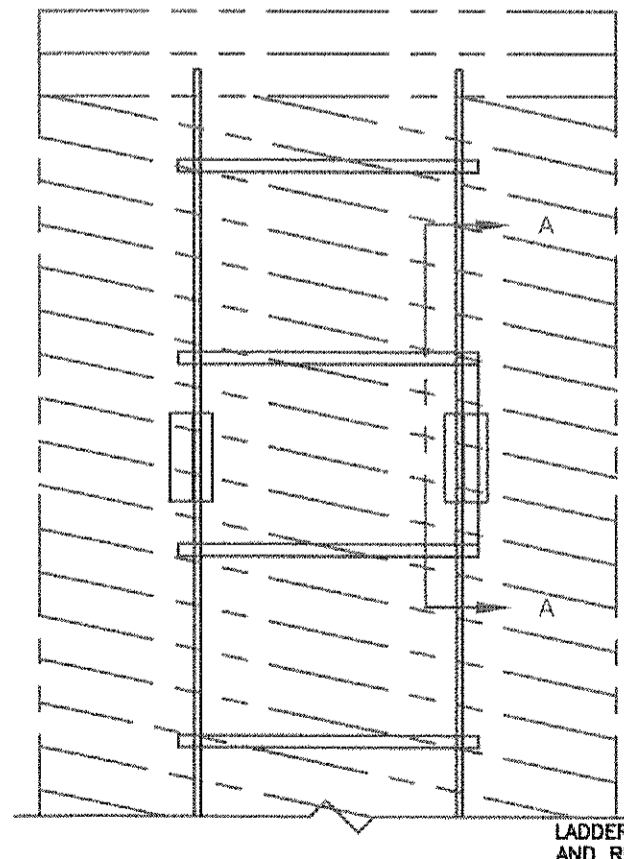
NOTE: WHEN RISER EXTENSIONS ARE USED, THE PLANT SHOULD CUT 3" FROM THE SIDE RAILS AS SHOWN

FABRICATION TOLERANCE: ± 1/4"
FLAT BAR AND REBAR: MILL TOLERANCE APPLIES
3/4" HOLE w/ 3/4" REBAR RUNG, WELD REBAR TO RUNG ON OUTSIDE OF STEEL RAIL
2 1/2" x 3/4" FLAT BAR SIDE RAIL

(4) 1/16" FILLET WELDS FROM EACH ANGLE CORRUGATION CREST (2 WELDS EACH SIDE) 2.33.33/16 5 1/2" LONG



PLAN



ELEVATION

RISER - NORMALLY 2 1/2" x 3/4" CMP
(4) 3/8" FILLET WELDS FROM EACH ANGLE TO CORRUGATION CREST (2 WELDS EACH SIDE) 2.33.33/16 5 1/2" LONG

(2) 3/4" FILLET WELDS 1" LONG
ATTACHMENT ANGLE MINIMUM OF 4 ANGLES PER LADDER SECTION (2 EACH SIDE OF LADDER) 6" MAX. SPACING VERTICALLY

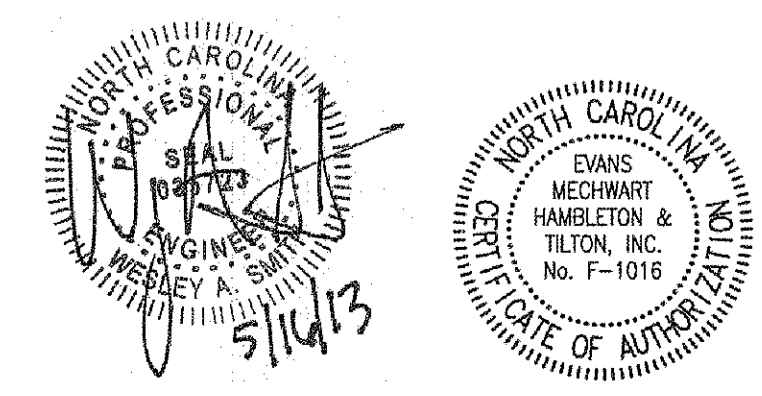
3" x 3" x 3/16" 5 1/2" LONG

Note: Information provided by Contech Engineering Solutions LLC. Contractor to coordinate shop drawings with Contech to verify the provided information.

PROVIDED FOR YOUR INFORMATION ONLY
INTENDED FOR PLANT USE

ALL CONSTRUCTION SHALL CONFORM TO TOWN OF CARY AND NCDOT STANDARDS AND SPECIFICATIONS

Cary Project #: 12-SP-047
HTE #: 13-0672
Approved by The Town of Cary
Development Review Committee
Planner *[Signature]* : Date 5/13/2013



HA WTHORN RETIREMENT GROUP <small>8310 NE Vancouver Mall Dr., Suite 200 Vancouver, WA 98662-2710 503.281.4645 6715 NE 43rd Vancouver, WA 98661</small>							
CARY RETIREMENT RESIDENCE DETENTION DETAILS							
185 CONVENTION DRIVE, TOWN OF CARY, NC SITE IMPROVEMENT PLAN FOR CARY RETIREMENT RESIDENCE DETENTION DETAILS	REVISIONS <table border="1"> <tr> <th>MARK</th> <th>DATE</th> <th>DESCRIPTION</th> </tr> <tr> <td>2</td> <td>4/4/13</td> <td>Revised per Town of Cary Comments</td> </tr> </table>	MARK	DATE	DESCRIPTION	2	4/4/13	Revised per Town of Cary Comments
MARK	DATE	DESCRIPTION					
2	4/4/13	Revised per Town of Cary Comments					
Daniel Roach architect 471 High Street, SE, Suite 10, Salem, Oregon 97301 P: 503 399 1090 F: 503 399 0565 www.danielroach.com	DATE MAY 6, 2013 SCALE As Noted JOB NO. 2012-0577 SHEET 12B/41						