

69'-5" E TO E OF BACK A. BOLTS

(N.T.S.) 69'-9 7/8 E TO E OF BACK A. BOLTS, TYP.  
69.8207

8 1/2" WD. LAM. MEMBER

8 1/2" WD. LAM. MEMBER

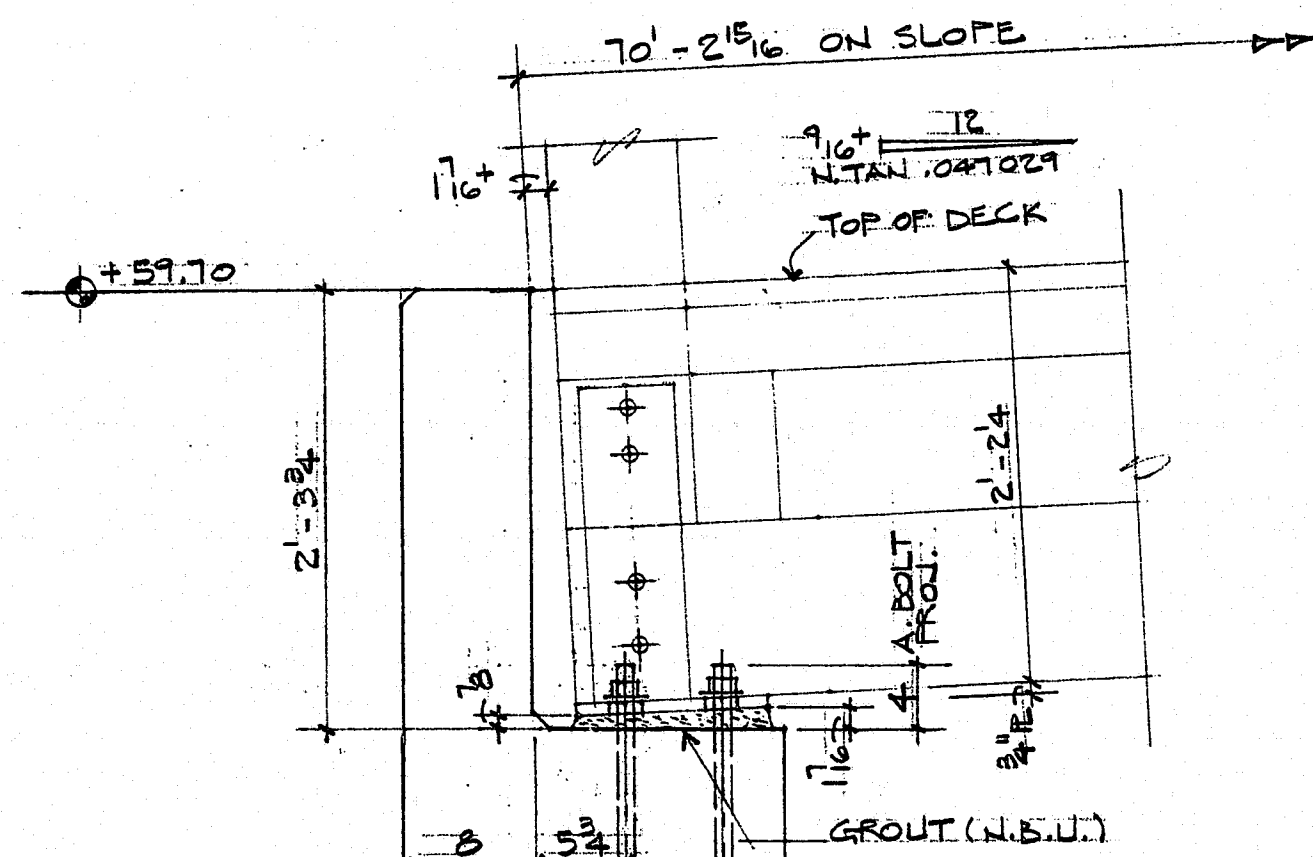
NORTH

67'-6" (N.T.S.) FACE TO FACE OF ABUTMENTS

70'-2" (N.T.S.) INSIDE TO INSIDE FACE

### ANCHOR BOLT LAYOUT PLAN AND ABUTMENT DETAILS

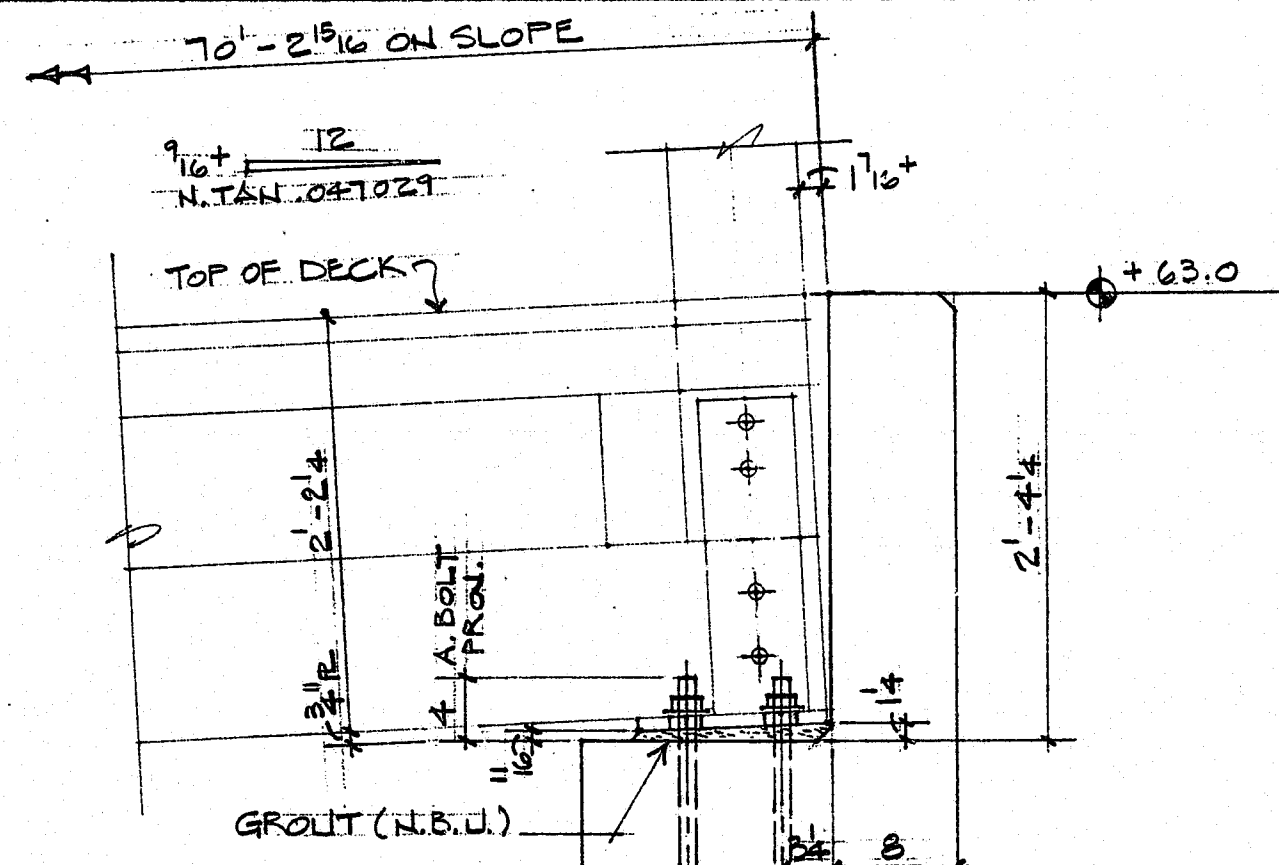
SCALE: 1/2" = 1'-0"



(2) 1"  $\phi$  ANCHOR BOLTS W/ NUTS & WASHERS (N.B.U.)

CONC. ABUTMENT (N.B.U.)

SECTION A (1" SCALE)  
(NORTH/LOW ABUTMENT)



(2) 1"  $\phi$  ANCHOR BOLTS W/ NUTS & WASHERS (N.B.U.)

CONC. ABUTMENT (N.B.U.)

SECTION B (1" SCALE)  
(SOUTH/HIGH ABUTMENT)

8.25' x 70' BRIDGE

PART "C"

CARY TENNIS CENTER  
CARY, NC

LA-5525

SCALE

DRAWN BY

CHECKED BY

REVISED

DES.

USLLC JOB 24-PB-4396C

DATE

APPROVED BY

DRAWING NUMBER

2 OF 10