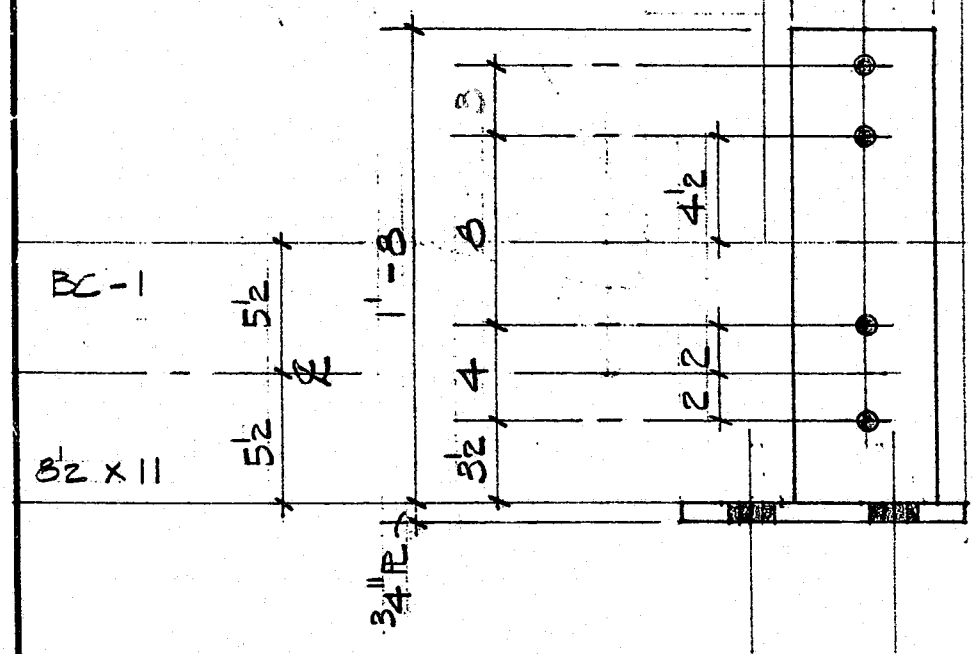
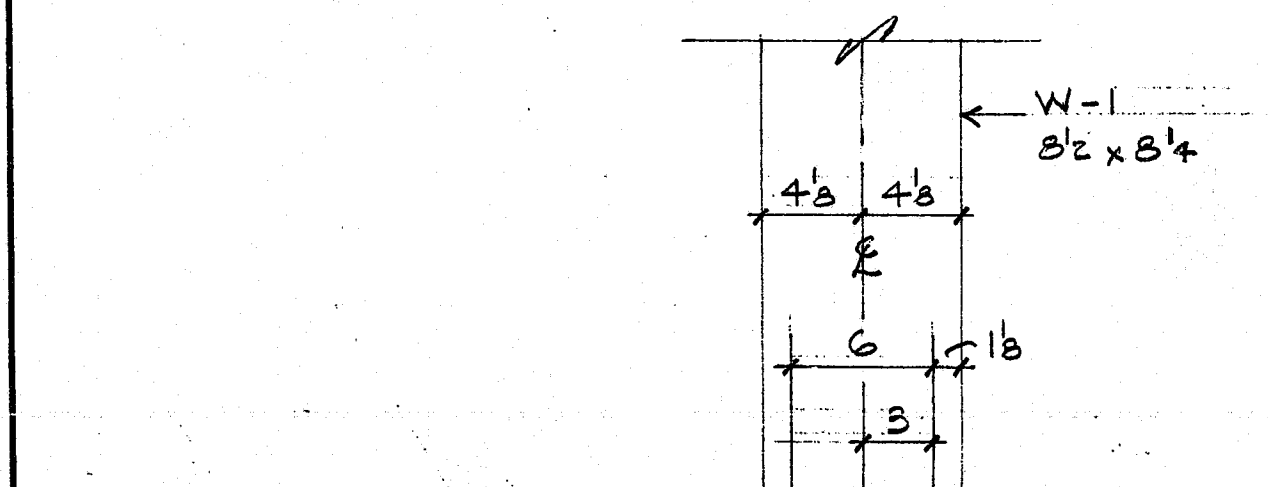


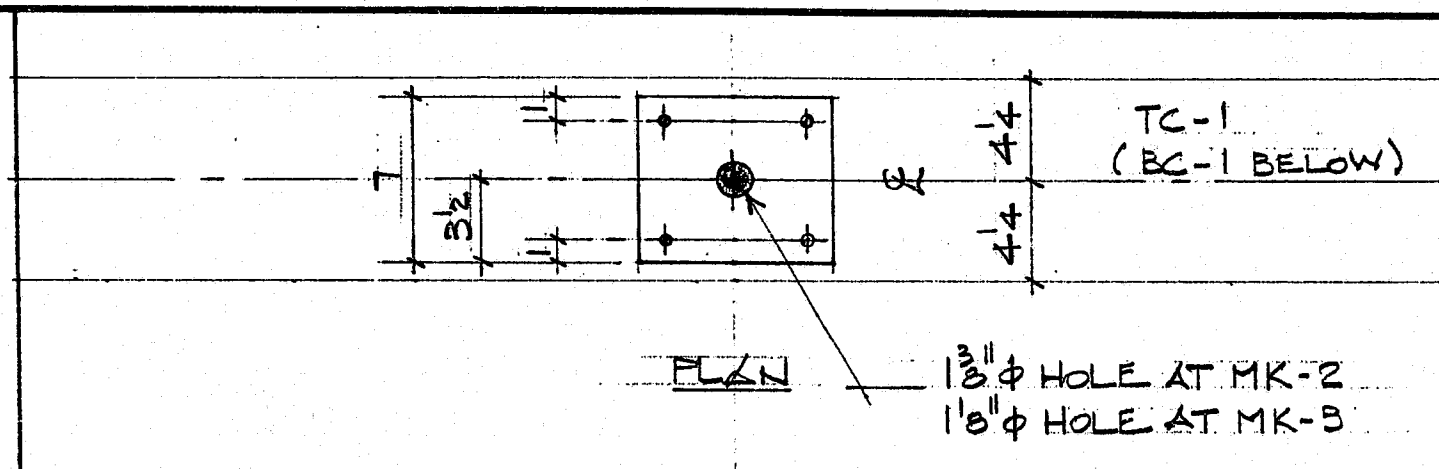
PLAN



(2) 1"  $\phi$  ANCHOR BOLTS  
W/ NUTS & WASHERS  
(N.B.U.)

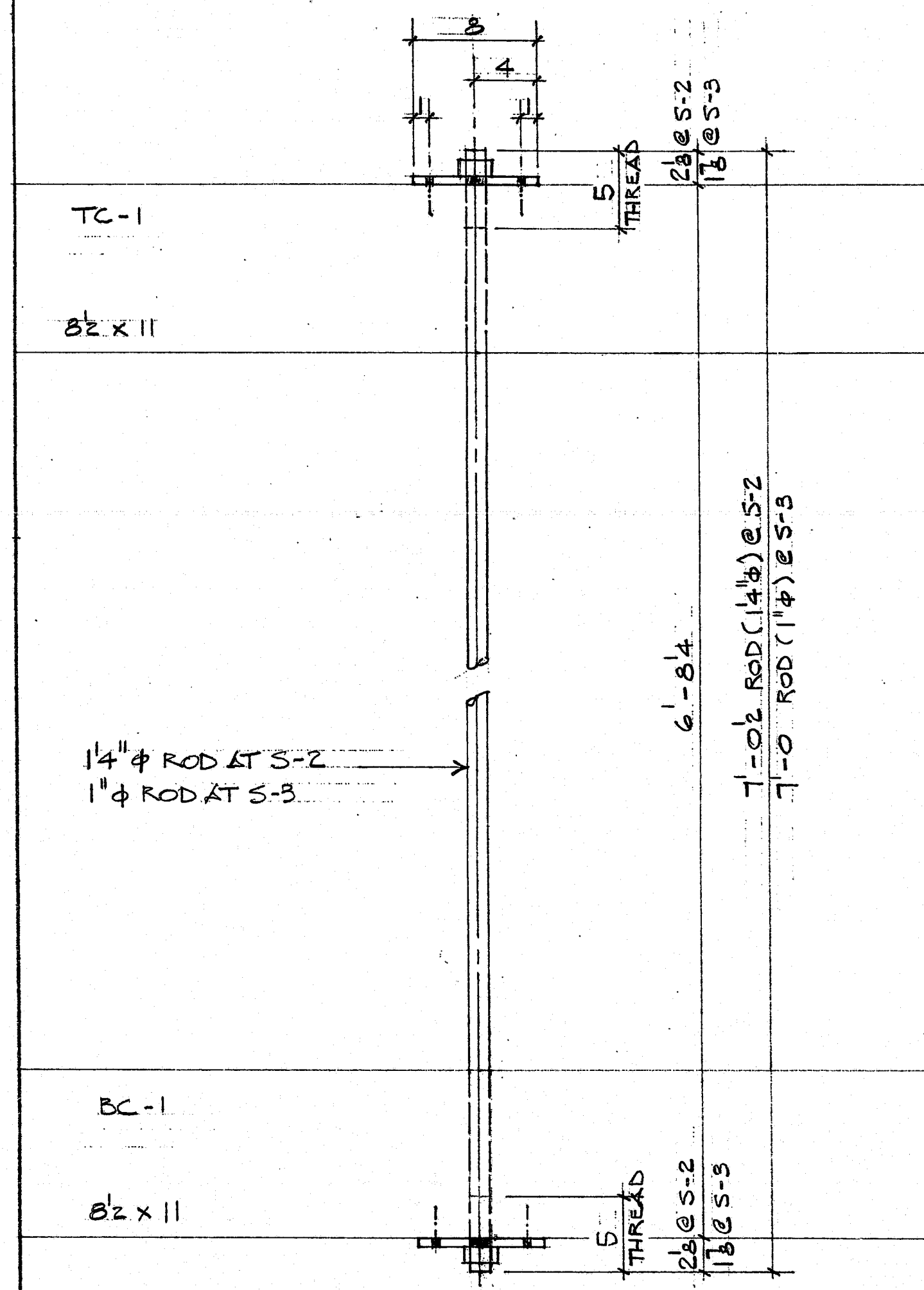
NOTE:  
SEE SHEET 2 FOR ANCHOR BOLT AND ABUTMENT  
LAYOUT, AND GROUT REQUIREMENTS.

4 CONN S-1	
1	MK-1 (BASE ASSEMBLY)
4	3/4 $\phi$ x 10 1/2 BOLT

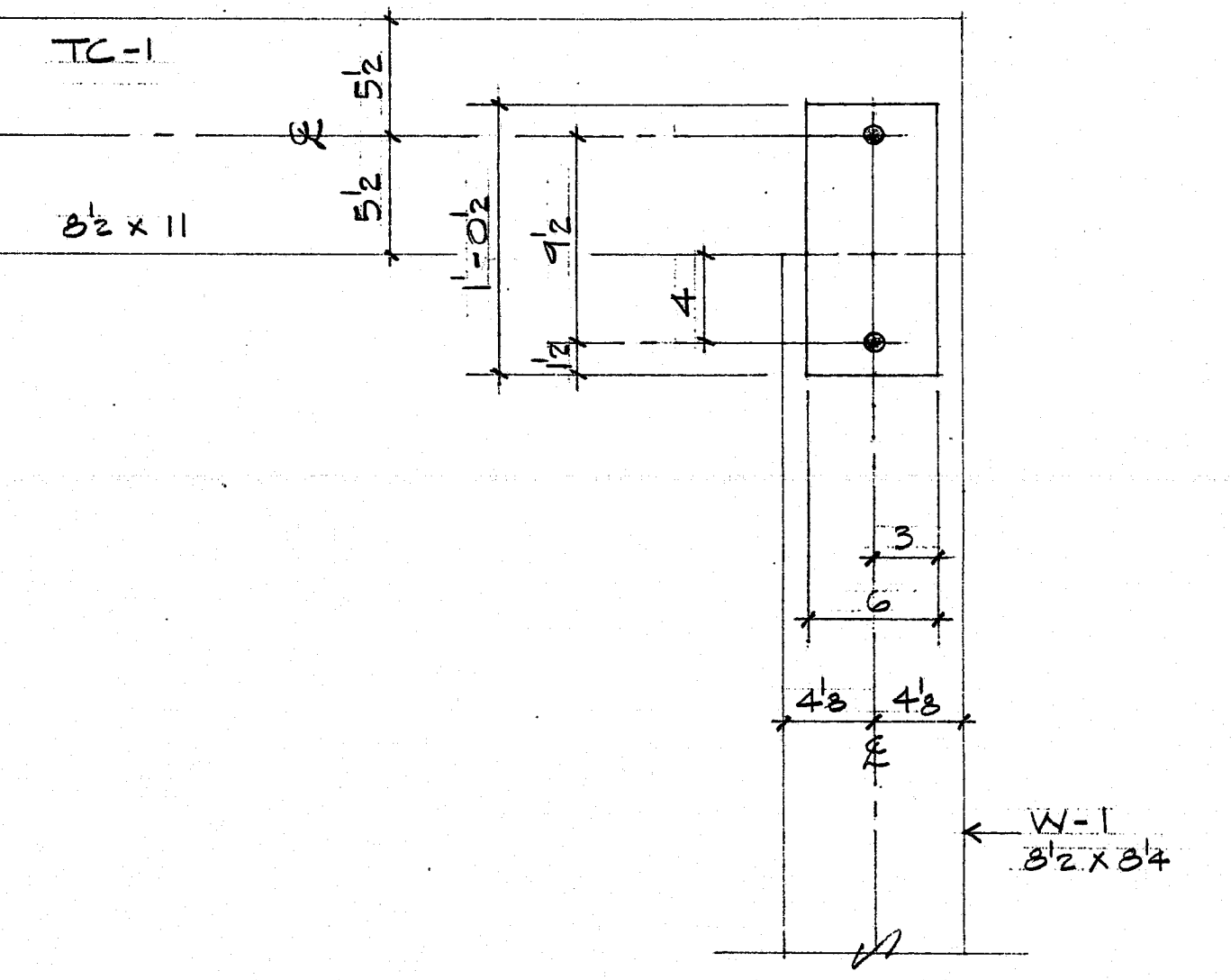


PLAN

1 1/8"  $\phi$  HOLE AT MK-2  
1 1/8"  $\phi$  HOLE AT MK-3



8 CONN S-2		18 CONN S-3	
2	MK-2 (P 1/2 x 7 x 0'-8)	2	MK-3 (P 1/2 x 7 x 0'-8)
1	1 1/4 $\phi$ x 7'-0 1/2 THD. ROD	1	1" $\phi$ x 7'-0 THD. ROD
2	1 1/4" HEX NUT	2	1" HEX NUT
8	2 1/2" A.R. NAIL	8	2 1/2" A.R. NAIL



4 CONN S-4	
2	MK-4 (P 3/8 x 6 x 1'-0 1/2)
2	3/4 $\phi$ x 10 BOLT

B.25' x 70' BRIDGE PART "C"

CARY TENNIS CENTER  
CARY, NC

SCALE: LA-5525

USLLC JOB 24-PB-4896 C

DATE: APPROVED BY: [Signature]

DRAWING NUMBER: 4 OF 10

DRAWN BY: WJB CHECKED BY: DES  
REVISED