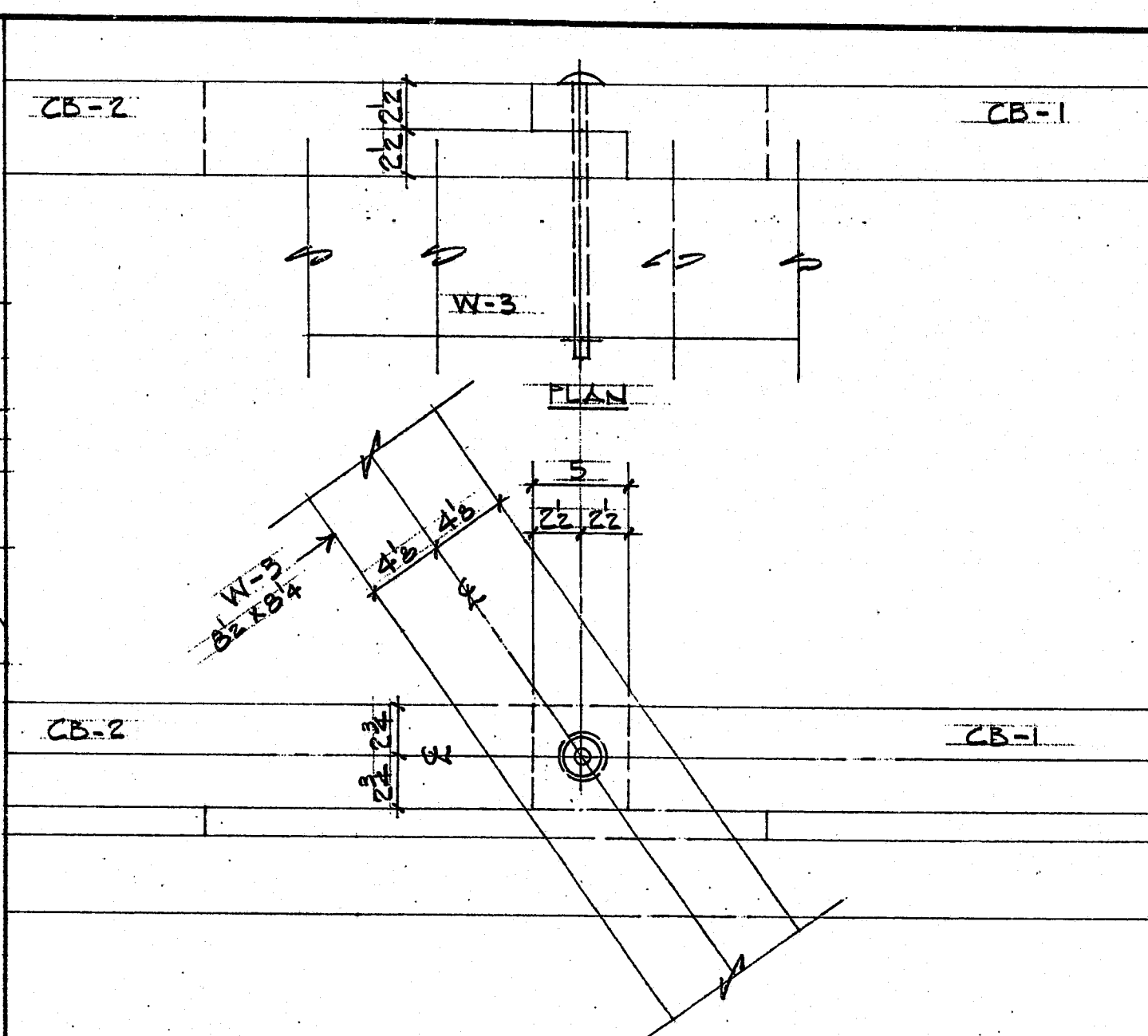


SIDE VIEW

ELEVATION

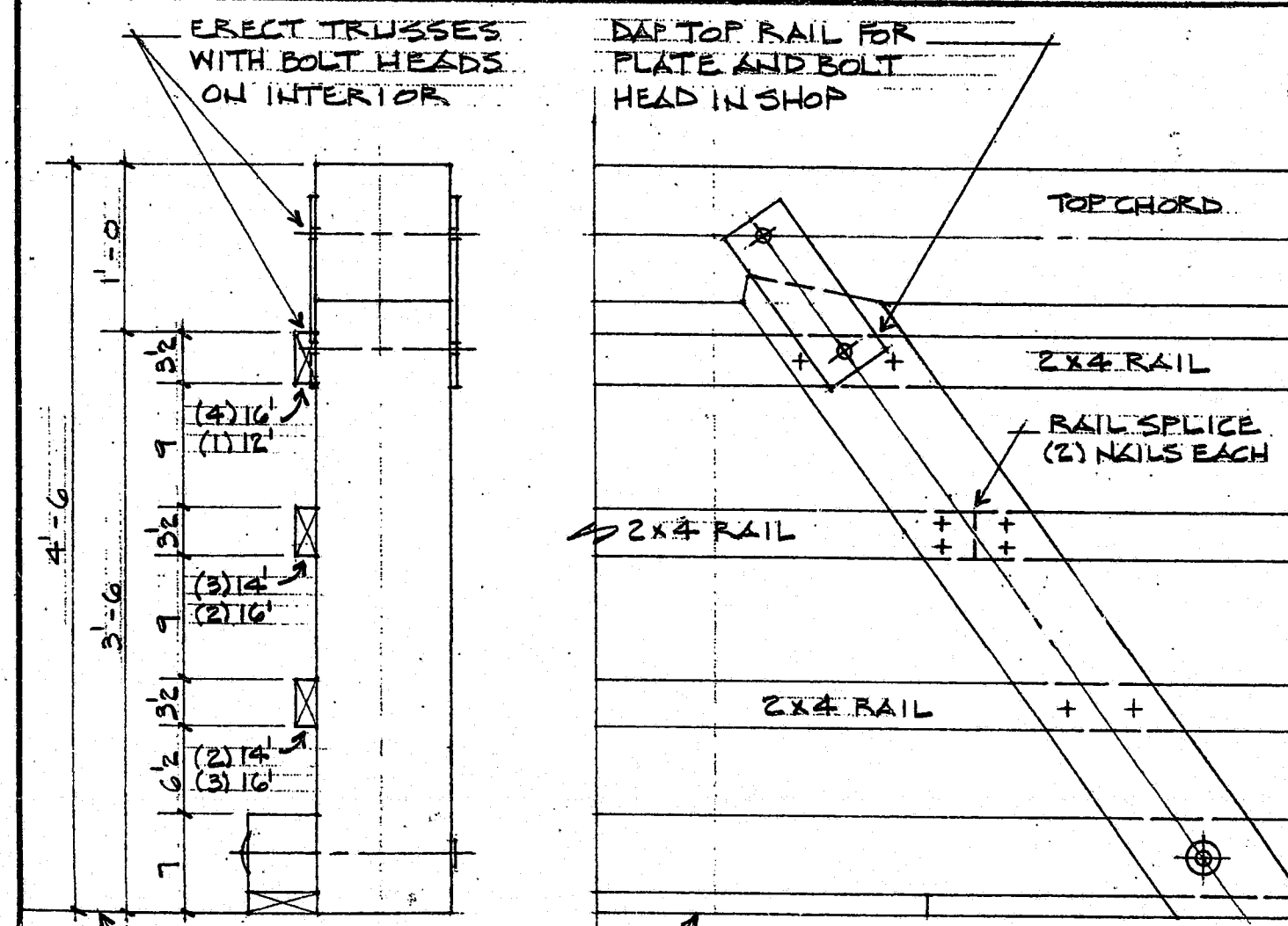
30 | **CONN S-13**

3/4" φ x 14 1/2" DOME HD. BOLT
3/4" WASHER



2 | **CONN S-14**

3/4" φ x 14 1/2" DOME HD. BOLT
3/4" WASHER



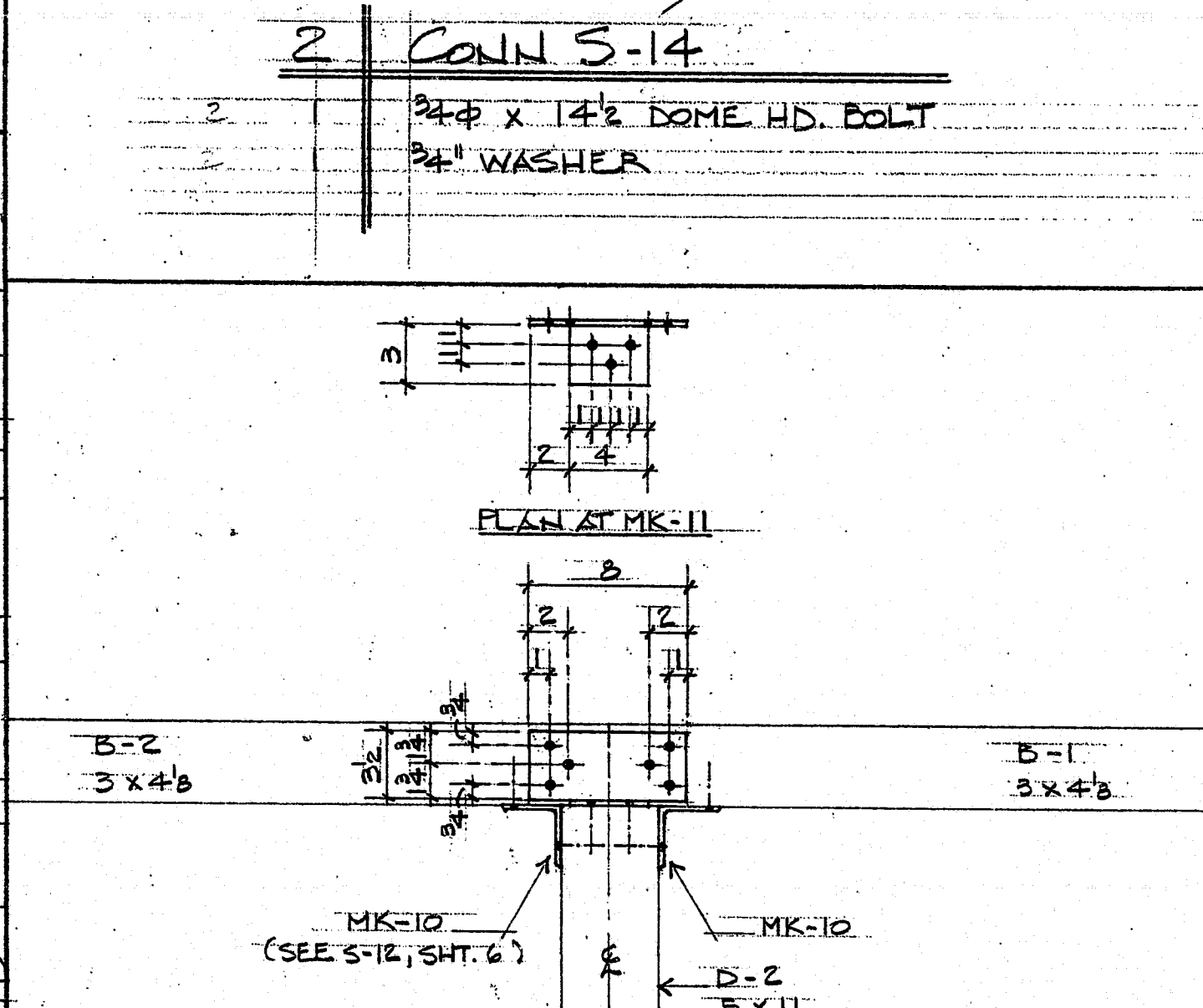
SIDE VIEW

ELEVATION

RAIL SPACINGS & NAILING INFORMATION

SHOP NOTES:

- 1) SHOP ATTACH RAILS TO BRIDGE TRUSSES.
- 2) ATTACH RAILS WITH TWO (2) 16d GALV. NAILS AT EACH WEB LOCATION. USE FOUR (4) NAILS AT EACH RAIL SPLICE.



1 | **CONN S-15**

14 2 MK-10 (2 3/8 x 3 x 1/8 x 0'-3)
14 2 MK-11 (4" ANGLE)
182 26 2 1/2" A.R. NAIL

8.25' x 70' BRIDGE PART "C"

| | | | | |
|--------------------------------|-------------|-------|---------------------------|-------------------|
| CARY TENNIS CENTER CARY, NC | | SCALE | DRAWN BY WLB | CHECKED BY DES |
| LA-5525 | | | REVISED | |
| USLLC JOB 24-PB-4396.C | | | | |
| DATE | APPROVED BY | | DRAWING NUMBER 7 OF 10 | |