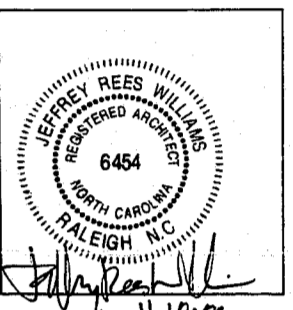
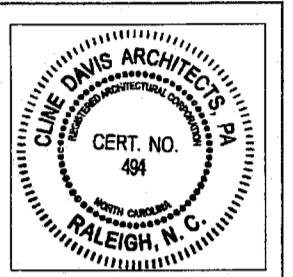




414 West Jones St.
Raleigh, NC 27603
919/833-6413
919/836-1280 FAX
CDA@INTERPATH.COM

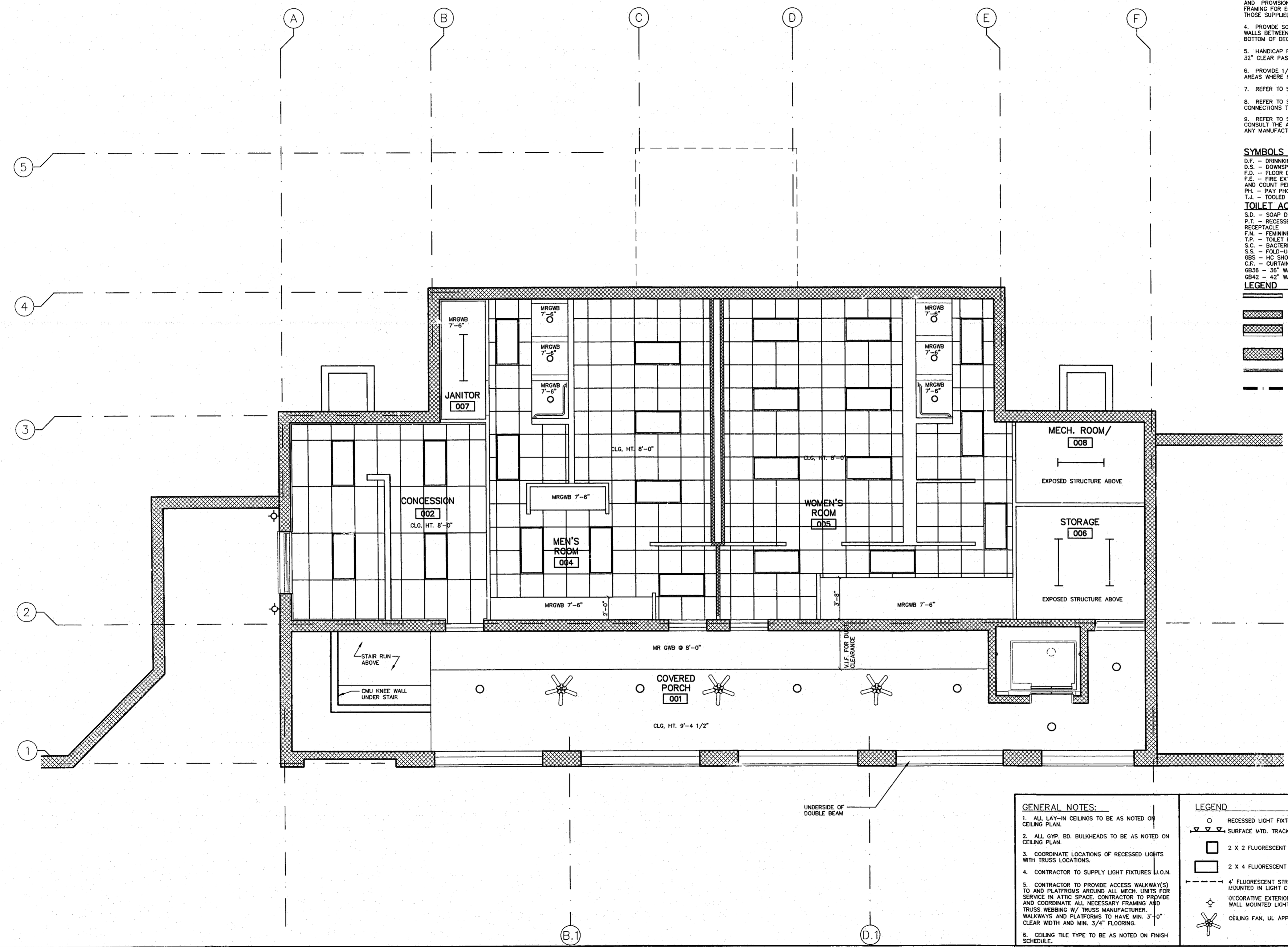


CARY TENNIS CENTER
Cary, North Carolina
Construction Documents

Project 98018
Date November 10, 2000
Revisions
Drawn By MTM
Checked By JRW
Content BASEMENT
REFLECTED
CEILING PLAN
Sheet **A1.04**

- GENERAL NOTES:**
- DIMENSIONS ARE GIVEN FROM FACE TO FACE OF FRAMING OR MASONRY.
 - ALL ANGLES ARE 45° U.O.N.
 - CONTRACTOR TO COORDINATE THE INSTALLATION AND PROVISION OF ALL NECESSARY BLOCKING AND FRAMING FOR EQUIPMENT AND FIXTURES INCLUDING THOSE SUPPLIED BY THE OWNER.
 - PROVIDE SOUND ATTENUATION INSULATION IN ALL WALLS BETWEEN RESTROOMS & PUBLIC SPACES UP TO BOTTOM OF DECK.
 - HANDICAP RESTROOM STALL DOORS SHOULD HAVE 32" CLEAR PASSAGE.
 - PROVIDE 1/8" x 1" SLOPE FOR DRAINAGE IN ALL AREAS WHERE FLOOR DRAINS ARE INDICATED.
 - REFER TO SHEET A-7.02 FOR ADA GUIDELINES.
 - REFER TO SITE PLAN(S) FOR ALL SIDEWALK CONNECTIONS TO BUILDING.
 - REFER TO STRUCTURAL SHEETS FOR DETAILS. CONSULT THE ARCHITECT FOR ANY CONFLICTS PRIOR TO ANY MANUFACTURING OR INSTALLATION.

- SYMBOLS**
- D.F. - DRINKING FOUNTAIN
 - D.S. - DOWNSPOUT LOCATION
 - F.D. - FLOOR DRAIN
 - F.E. - FIRE EXTINGUISHER CABINET - EXACT LOCATION AND COUNT PER FIRE MARSHALL
 - PH. - PAY PHONE
 - T.J. - TOOLED JOINT IN CONCRETE
- TOILET ACCESSORY LEGEND**
- S.D. - SOAP DISPENSER
 - P.T. - RECESSED PAPER TOWEL DISPENSER/TRASH RECEPTACLE
 - F.N. - FEMININE NAPKIN DISPOSAL
 - T.P. - TOILET PAPER HOLDER
 - S.C. - BACTERIA RESISTANT SHOWER CURTAIN
 - S.S. - FOLD-UP SHOWER SEAT
 - G.S. - HC SHOWER GRAB BAR
 - C.R. - CURTAIN ROD
 - GB36 - 36" WALL MOUNTED GRAB BAR
 - GB42 - 42" WALL MOUNTED GRAB BAR
- LEGEND**
- 3-5/8" METAL STUD 16" O.C. WITH 5/8" GWB ON BOTH SIDES, U.O.N.
 - 8" CMU WALL
 - 8" CMU WALL W/ 3 5/8" MTL STUD FURRING @ 16" O.C. W/ 5/8" GWB OVER
 - 12" CMU WALL
 - SOUND ATTENUATION INSULATION
 - DRAFTSTOPPING @ ATTIC - PROVIDE SELF ENCLOSING ACCESS PANEL AS REQ'D. TO ALLOW ACCESS TO ALL AREAS IN ATTIC



- GENERAL NOTES:**
- ALL LAY-IN CEILINGS TO BE AS NOTED ON CEILING PLAN.
 - ALL GYP. BD. BULKHEADS TO BE AS NOTED ON CEILING PLAN.
 - COORDINATE LOCATIONS OF RECESSED LIGHTS WITH TRUSS LOCATIONS.
 - CONTRACTOR TO SUPPLY LIGHT FIXTURES U.O.N.
 - CONTRACTOR TO PROVIDE ACCESS WALKWAY(S) TO AND PLATFORMS AROUND ALL MECH. UNITS FOR SERVICE IN ATTIC SPACE. CONTRACTOR TO PROVIDE AND COORDINATE ALL NECESSARY FRAMING AND TRUSS WEBBING W/ TRUSS MANUFACTURER. WALKWAYS AND PLATFORMS TO HAVE MIN. 3'-0" CLEAR WIDTH AND MIN. 3/4" FLOORING.
 - CEILING TILE TYPE TO BE AS NOTED ON FINISH SCHEDULE.

- LEGEND**
- RECESSED LIGHT FIXTURE
 - SURFACE MTD. TRACK LIGHTING FIXTURE
 - 2 X 2 FLUORESCENT LIGHT FIXTURE
 - 2 X 4 FLUORESCENT LIGHT FIXTURE
 - 4' FLUORESCENT STRIP LIGHT FIXTURE MOUNTED IN LIGHT COVE
 - DECORATIVE EXTERIOR WALL MOUNTED LIGHT FIXTURE
 - CEILING FAN, UL APPROVED FOR WET LOCATIONS

1 BASEMENT FLOOR REFLECTED CEILING PLAN
SCALE: 1/4" = 1'-0"

00-SP-018-A
APPROVED
BY 2/21/01
TM 2.2.01

© 1999 CLINE DAVIS ARCHITECTS EXPRESSLY RESERVES ITS COMMON LAW COPYRIGHT AND OTHER PROPERTY RIGHTS IN THESE PLANS. THESE PLANS ARE NOT TO BE REPRODUCED, CHANGED OR COPIED IN ANY FORM OR MANNER WHATSOEVER, NOR ARE THEY TO BE ASSIGNED TO ANY THIRD PARTY WITHOUT FIRST OBTAINING THE EXPRESS WRITTEN PERMISSION AND CONSENT OF CLINE DAVIS ARCHITECTS, PA.