

**• PATON/
ZUCCHINO
& ASSOCIATES, P.A.**
LANDSCAPE ARCHITECTURE/LAND PLANNING

200 North West Street
Raleigh, N.C. 27603
Bus. (919) 834-8620
Fax. (919) 828-7068
www.paton-zucchini.com
email: zpa@paton-zucchini.com

- Architect:
CLINE DAVIS ARCHITECTS
- Architect (Shelter):
CHERRY HUFFMAN ARCHITECTS
- Tennis Consultant:
TRIANGLE TENNIS CONSULTANTS, INC.
- PME Engineer(SHELTER):
THE WOOTEN COMPANY
- Civil Engineer:
H.J. GILLEECE & ASSOCIATES
- Irrigation Engineer:
SMITH TURF & IRRIGATION

• Geotechnical Engineer:
ECS CONSULTANTS, INC.

• Owner:
TOWN OF CARY
CARY, NORTH CAROLINA

• Project:
CARY TENNIS CENTER

• Sheet Title:
Electrical Plan, Schedules and Riser

• Issue Date:
11/1/00

• Revisions:

• Project Number:
00-SP-018-Acom1

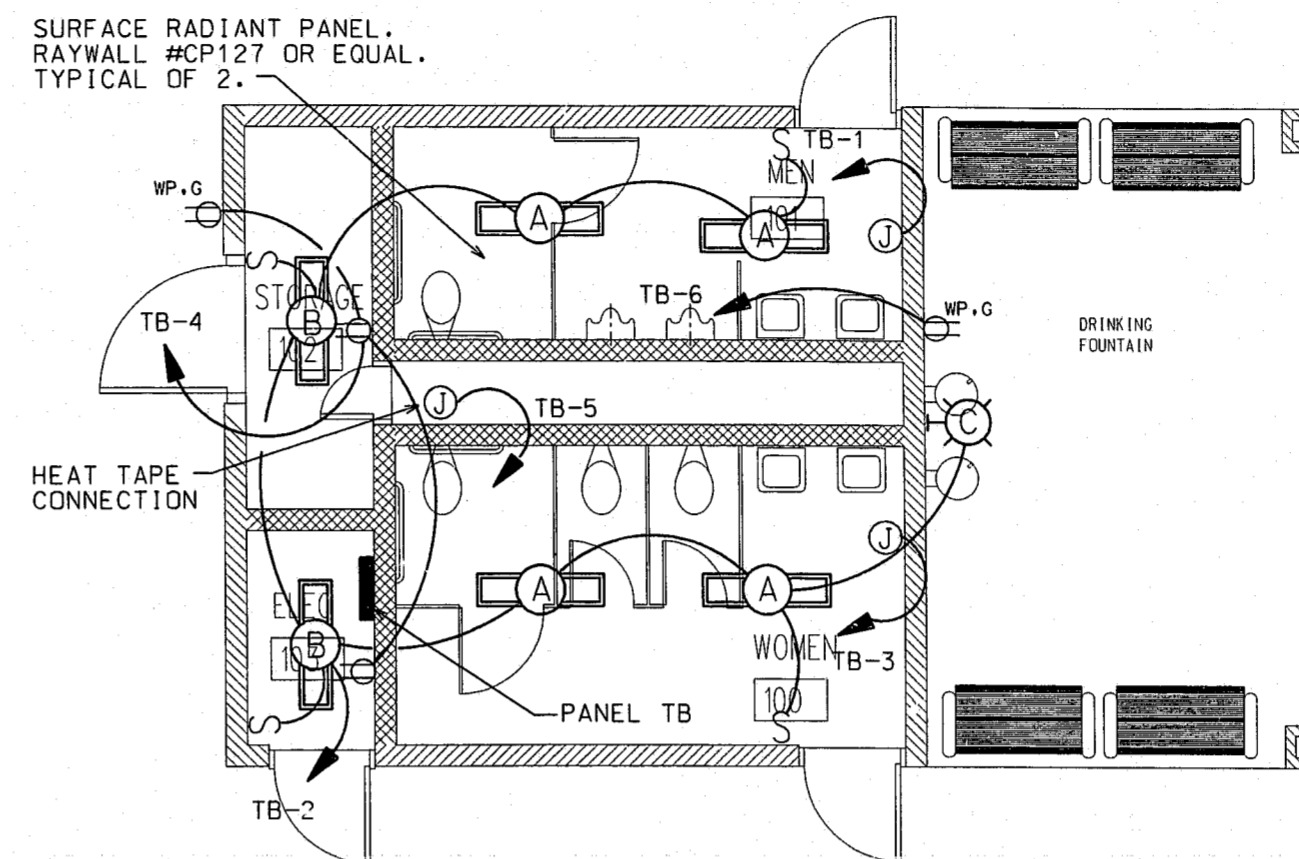
• Sheet Number:

E101

ENERGY CODE DATA			
Electrical System and Equipment			
Prescriptive <input checked="" type="checkbox"/>	Method of Compliance	Performance <input type="checkbox"/>	Energy Cost Budget <input type="checkbox"/>
Refer to Riser Diagram indicating point of metering.			
Refer to panel schedules indicating end use loads.			
Lighting Schedule			
Lamp type required in fixture	See Lighting fixture schedule		
Number of lamps in fixture	See Lighting fixture schedule		
Ballast type used in fixture	See Lighting fixture schedule		
Number of ballasts used in fixture	See Lighting fixture schedule		
Total wattage per fixture	See Lighting fixture schedule		
Total interior wattage specified vs allowed	Specified : 0.45 kW; Allowed : 0.72 kW		
Total exterior wattage specified vs allowed	Specified : 0.10 kW; Allowed : 0.80 kW		
Equipment Schedules with Motors (not used for mechanical systems)			
Minimum Full-Load Efficiency for Single-Speed, Three Phase, Energy Efficient, Open Drip-Proof Motors			
Motor Horsepower	RPM	Minimum efficiency (%)	Power Factor (%)
1	1800	82	84
1.5	1800	84	85
2	1800	84	85
3	1800	86	86
5	1800	87	87
7.5	1800	88	86
10	1800	89	85
Designer Statement			
To the best of my knowledge and belief, the design of this building complies with the electrical systems requirements of the North Carolina State Building Code, Volume X-Energy.			
Signed: <i>Robert E. Egan</i>			
Name: Robert E. Egan, P.E.			
Title: Electrical Engineer			

PANELBOARD "TB"										60 A MAIN BUS RATING			
VOLTAGE : 208 /120 3PH 4W		MOUNTING: SURFACE		TYPE: AS SPECIFIED				60 A MAIN BREAKER					
BRANCH CIRCUIT	WIRE SIZE	VA	TRIP POLE	PKT	PHASE LOADS	DEVICES	TRIP	VA	WIRE SIZE	LOAD	BRANCH CIRCUIT	LOAD	
HAND DRYER	3# 10, 3/4"C.	2300	30	1	1	2845		2	1	20	545	3# 12, 3/4"C.	SHELTER LIGHTS
HAND DRYER	3# 10, 3/4"C.	2300	30	1	3	2840		4	1	20	540	3# 12, 3/4"C.	SHELTER RECEPTACLES
HEAT TAPE	3# 12, 3/4"C.	600	20	1	5		140	6	1	20	540	3# 12, 3/4"C.	SHELTER RECEPTACLES
SPARE			20	1	7	0		8	1	20			SPARE
SPARE			20	1	9	0		10	1	20			SPARE
SPARE			20	1	11	0		12	1	20			SPARE
KVA LOAD		6.83		2845		2840		140					
AMPERE LOAD		16.94											
												10000 MIN. INTERRUPTING CAP. (RMS SYM. AMPS)	

LIGHT FIXTURE SCHEDULE							
MARK	MANUFACTURER & CAT. NO. OR EQUAL	LAMPS			VOLTAGE	MOUNTING	NOTE NO.
		TYPE	NO.	WATTS			
A	FAIL-SAFE FSRC-64H-120V	T8 F32	2	32	120	SURFACE	
B	LITHONIA EJ-2-32-120	T8 F32	2	32	120	SURFACE	
C	BETA BCA407K4S-D	MH	1	70	120	SURFACE	1
NOTES:							
1. PROVIDE PHOTOCELL CONTROL.							



1 FLOOR PLAN - ELECTRICAL
E101 SCALE: 1/4" = 1'-0"

ELECTRICAL SYMBOL LEGEND

NOTE: ALL SYMBOLS MAY NOT BE USED ON THIS PROJECT. AN "E" BESIDE ANY DEVICE INDICATES EXISTING TO REMAIN.

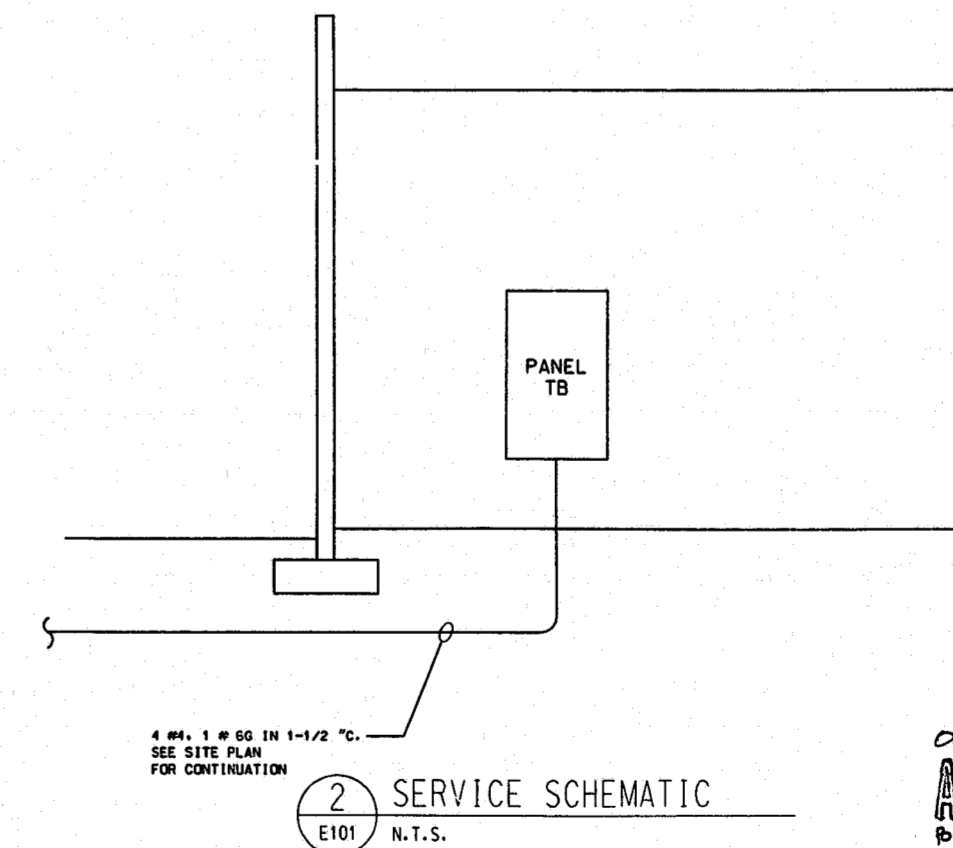
- LIGHT FIXTURE, SEE FIXTURE SCHEDULE
- LIGHT FIXTURE, SEE FIXTURE SCHEDULE
- TOGGLE SWITCH. MOUNT CENTER AT 46" AFF
- DUPLEX RECEPTACLE. MOUNT CENTER AT 18" AFF UNLESS NOTED
- HOME RUN TO PANEL. ANY CIRCUIT WITHOUT FURTHER DESIGNATION INDICATES 2#12, 1#12G. IN 3/4" C. ADDITIONAL CONDUCTORS ARE INDICATED AS FOLLOWS:
 - 2#12, 1#12N., 1#12G. IN 3/4" C.
 - 3#12, 1#12 OR #10 N., 1#12G IN 3/4" C.
- SEE PANEL SCHEDULES & POWER DISTRIBUTION DIAGRAM FOR ADDITIONAL WIRE SIZES
- WIRING IN CONDUIT CONCEALED IN WALLS AND ABOVE CEILING
- WIRING IN CONDUIT CONCEALED UNDERFLOOR OR UNDERGROUND
- EMPTY CONDUIT
- PANELBOARD, SEE SCHEDULES & DETAIL 1/E405
- JUNCTION BOX

GENERAL NOTES:

1. CONTRACTOR SHALL NOT USE BAR JOIST BRIDGING AND/OR ROOF DECK TO SUPPORT CONDUIT, WIRING, OR ANY OTHER ELECTRICAL EQUIPMENT.
2. PROVIDE PULL STINGS IN ALL EMPTY CONDUITS.
3. COORDINATE INSTALLATION OF ALL LIGHTS. SEE ARCHITECTURAL SECTIONS PRIOR TO INSTALLATION.

ELECTRICAL ABBREVIATIONS:

- WP WEATHERPROOF
- AFF ABOVE FINISHED FLOOR
- RECEPTACLE ABBREVIATIONS:
- WP WEATHERPROOF ENCLOSURE
- G GROUND FAULT
- T TAMPER PROOF
- GA GROUND FAULT; ABOVE COUNTER, SHELF OR CUBBIE. COORD. EXACT HEIGHT WITH CASEWORK SUPPLIER.



2 SERVICE SCHEMATIC
E101 N.T.S.

00-SP-018-A
APPROVED
RPS 2/26/01

Robert E. Egan
2/26/01